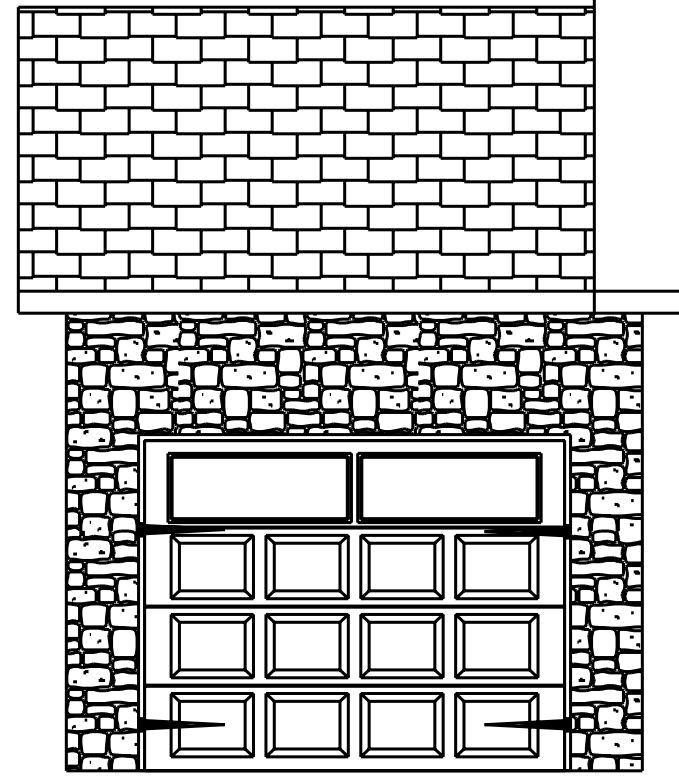


**NOTICE TO CONTRACTOR**  
All construction must comply with current NC Building Codes and is subject to field inspection and verification.

**APPROVED**  
Limited building only review  
Permit holder responsible for full compliance with the code

07/31/2020

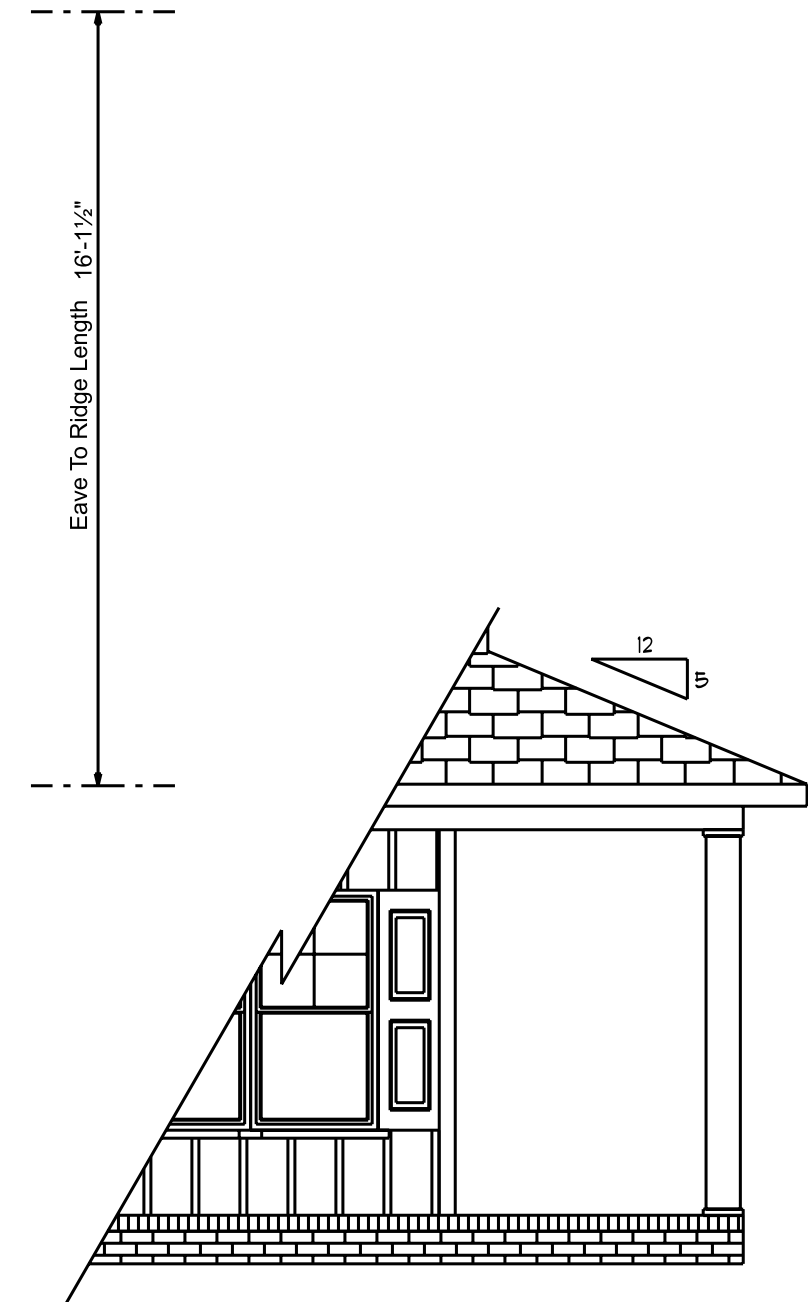
*Beaugh*



Optional  
3rd Car



Front Elevation  
Scale: 1/4" = 1'0"



Optional  
Wrap-Around  
Porch

**ATTIC VENTILATION**

1266 SQ.FT. OF ATTIC / 150 = 8.44 SQ.FT. TOTAL NET FREE VENTILATING AREA.

VENTILATION MAY BE REDUCED 50% PROVIDED AT LEAST 50 PERCENT AND NOT MORE THAN 80 PERCENT OF THE REQUIRED VENTILATING AREA IS PROVIDED BY VENTILATORS LOCATED IN THE UPPER PORTION OF THE SPACE TO BE VENTILATED AT LEAST 3'-0" ABOVE EAVE OR CORNICE VENTS WITH THE BALANCE OF THE REQUIRED VENTILATION PROVIDED BY EAVE OR CORNICE VENTS.

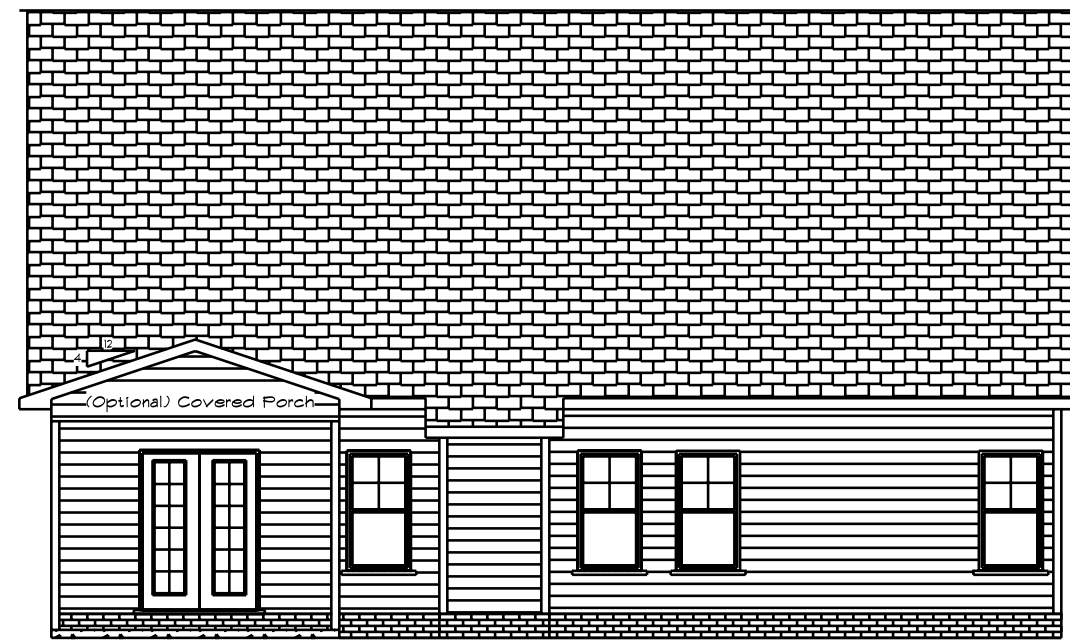
This Plan is Designed To Meet The Requirements Of The 2018 Residential Building Code

1/2" Continuous Wood Sheathing On All exterior Walls  
Exterior Finish is Vinyl Siding, Vinyl Shakes Or Manufactured Stone

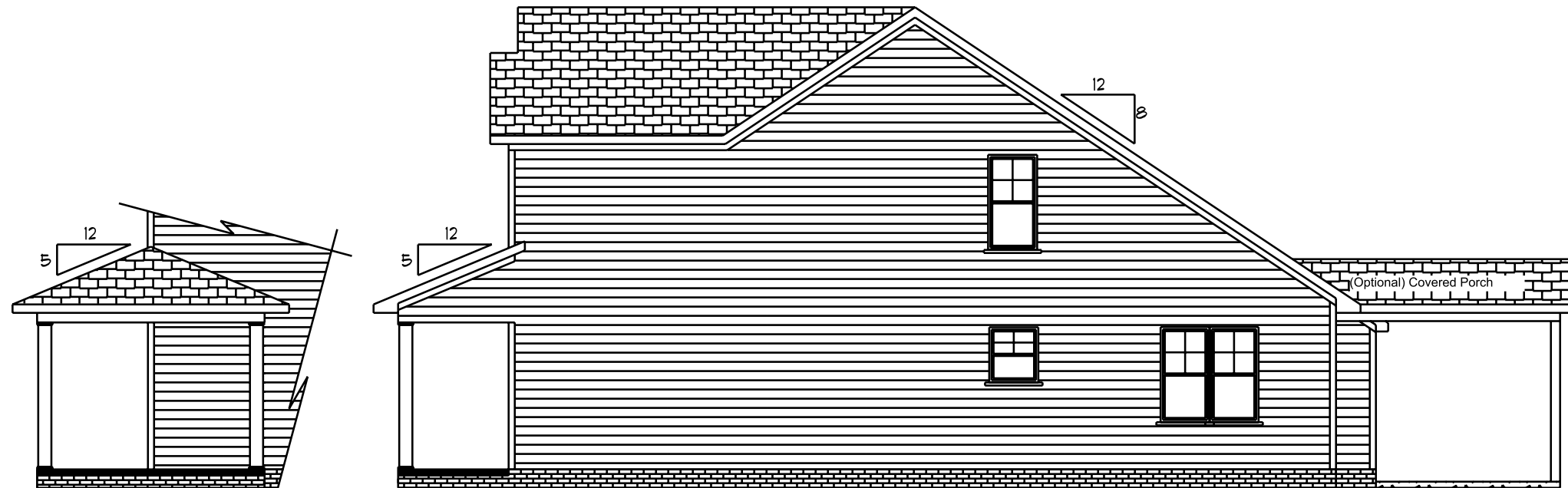
**Fenestration And Insulation Requirements**

Climate Zone	3A	4A
Fenestration U-Factor	0.35	0.35
Glazed Fenestration SHGC	0.3	0.3
Minimum Ceiling R-Value	30	30/38
Minimum Wall R-Value	13	15
Minimum Slab R-Value	0	10
Minimum Floor R-Value	19	19
Glazing Pressure	+/-2 psf	+/-2 psf

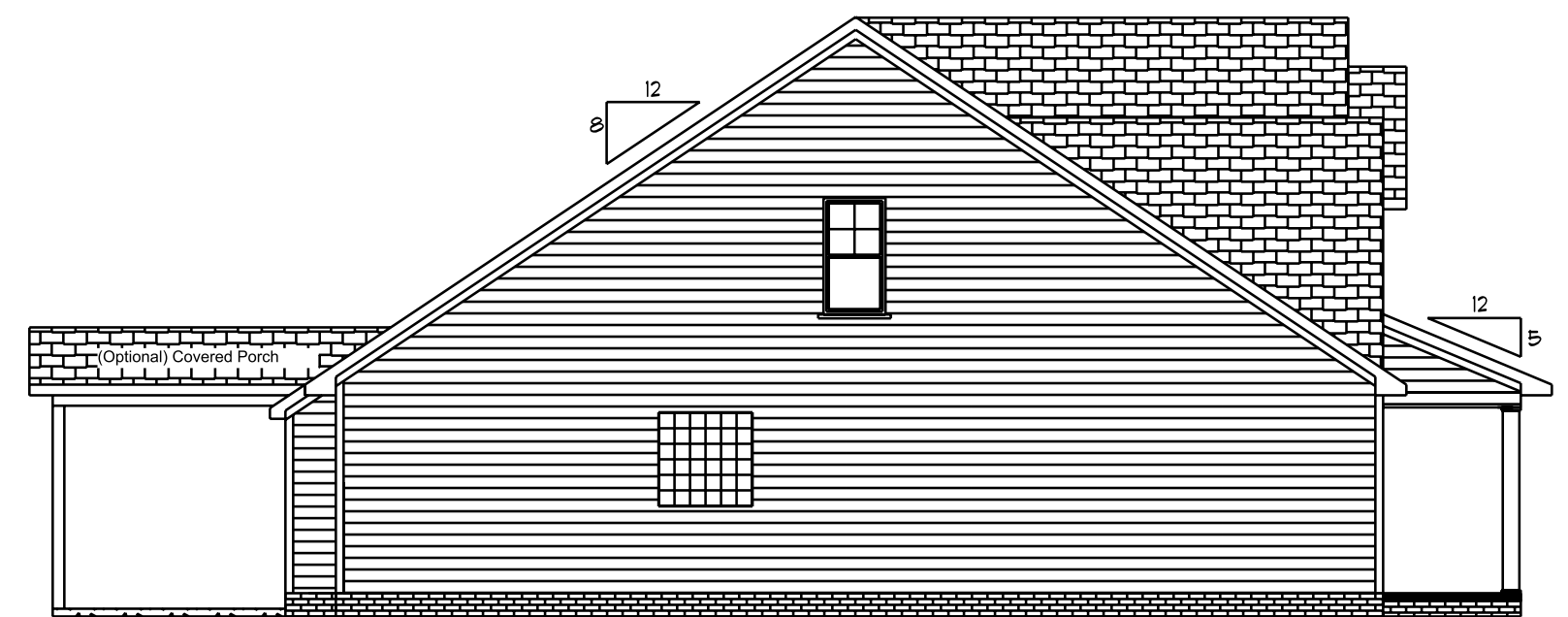
Total Glazing Area = 255.68 Sq.Ft.



Rear Elevation  
Scale: 1/8" = 1'0"



Right Elevation  
Scale: 1/8" = 1'0"



Left Elevation  
Scale: 1/8" = 1'0"

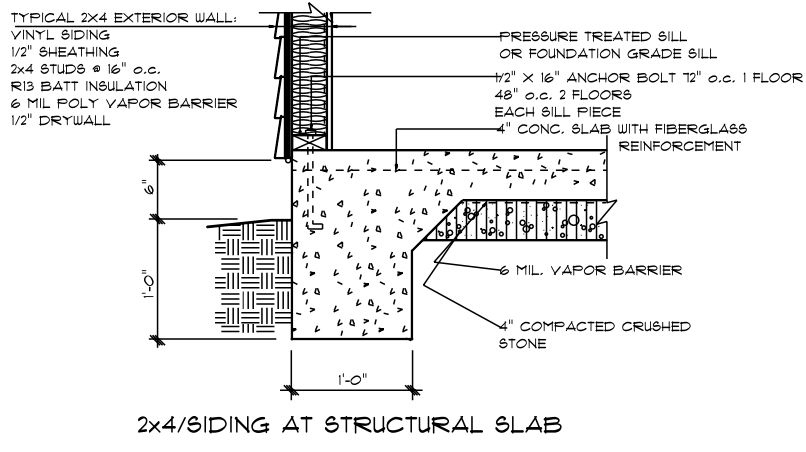
Beaugh Designs  
2121 Chimney Pt.  
Linden N.C. 28356  
910-864-1253

DATE 6/2/2020  
REVISED  
DRAWING\*

Elv. B

SCALE  
DRAWN BY  
APPROVED

Stockton XL



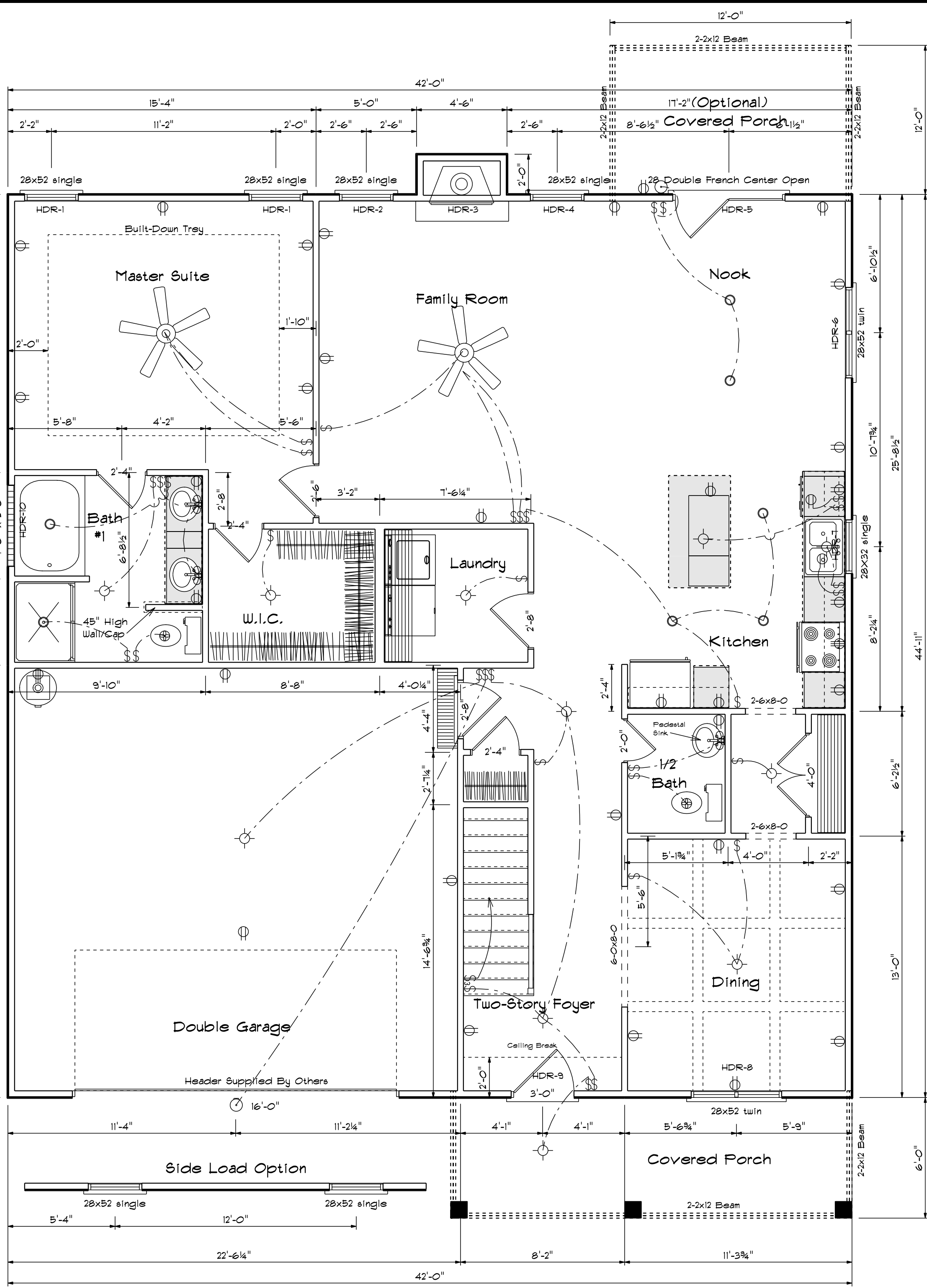
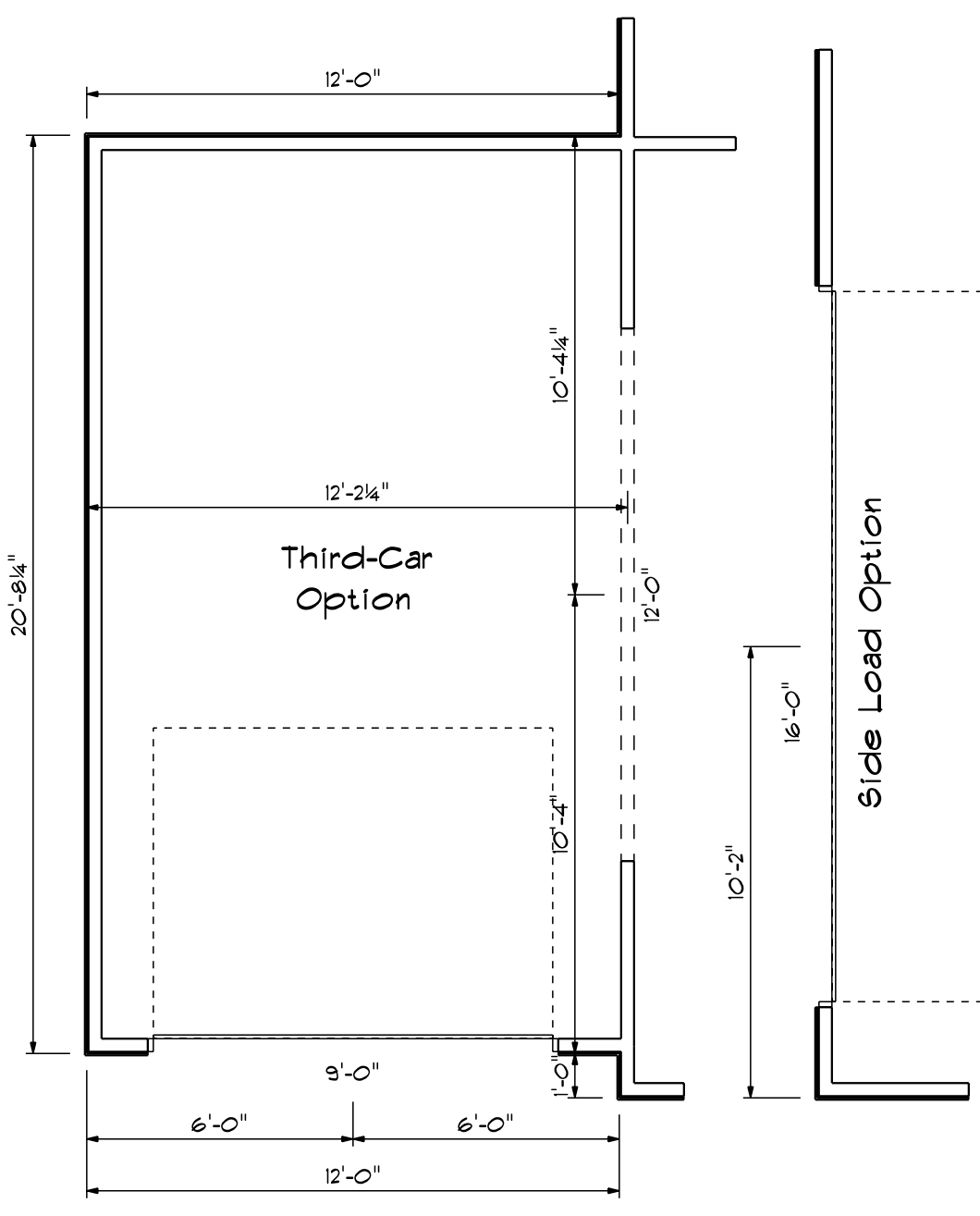
All Headers Double #2 Pine With Double Jacks When Length Over 6'-0"

HDR	Size	Length
1	2x10	3' 3 1/2"
2	2x12	3' 3 1/2"
3	2x10	4' 3 1/2"
4	2x10	2' 3 1/2"
5	2x10	5' 7 1/2"
6	2x10	5' 7 1/2"
7	2x10	3' 3 1/2"
8	2x10	5' 7 1/2"
9	2x10	3' 3 1/2"
10	2x10	4' 3 1/2"

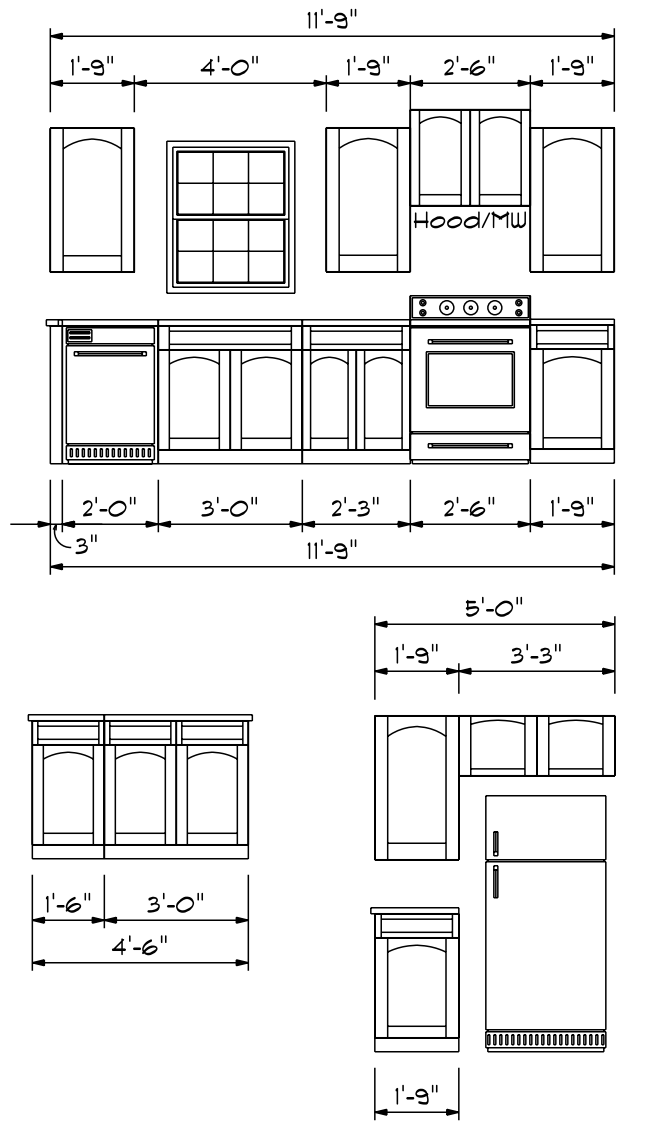
Note: ALL EXTERIOR WALLS TO BE SHEATHED WITH 7/16 OSB For Bacewall Support.

1st Floor Glazing Area = 133.07 Sq.Ft.

PRODUCT CODE	SIZE	COUNT	WIDTH	HEIGHT
60X80 LH ENTRY - 2 SL	5'-0"	1	5'-0"	6'-9 1/2"
28X32 single	2'-8" x 3'-2"	1	2'-8"	3'-2"
28X52 single	2'-8" x 5'-2"	4	2'-8"	5'-2"
28X52 twin	5'-4" x 5'-2"	1	5'-4"	5'-2"
4.0x2.0 Glass Block	4'-0" x 2'-0"	1	4'-0"	2'-0"



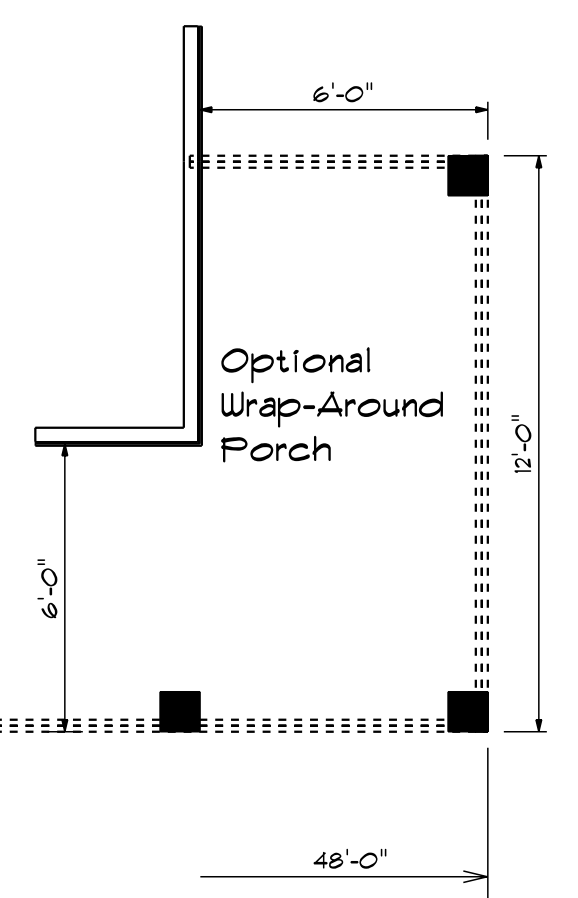
### Kitchen Cabinets



### First Floor Plan

#### Areas

First Floor	1412
Second Floor	840
<b>Total Heated</b>	<b>2252</b>
With Optional Bdrm #2	2310
Garage	479
Front Porch	115
Optional Third Car Garage	240
Optional Rear Covered Porch	144

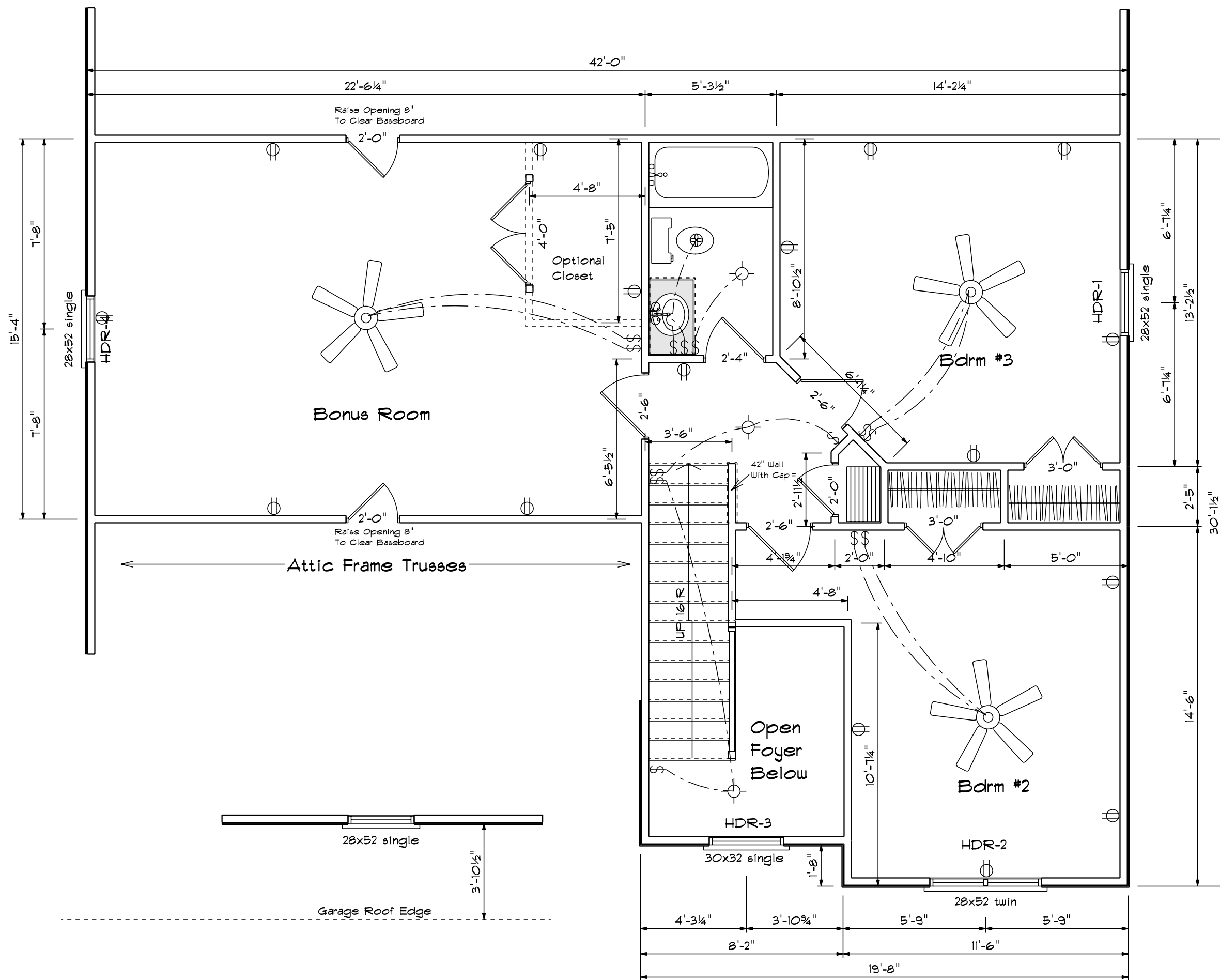


All Headers Double #2  
Fins With Double Jacks  
When Length Over 6'-0"

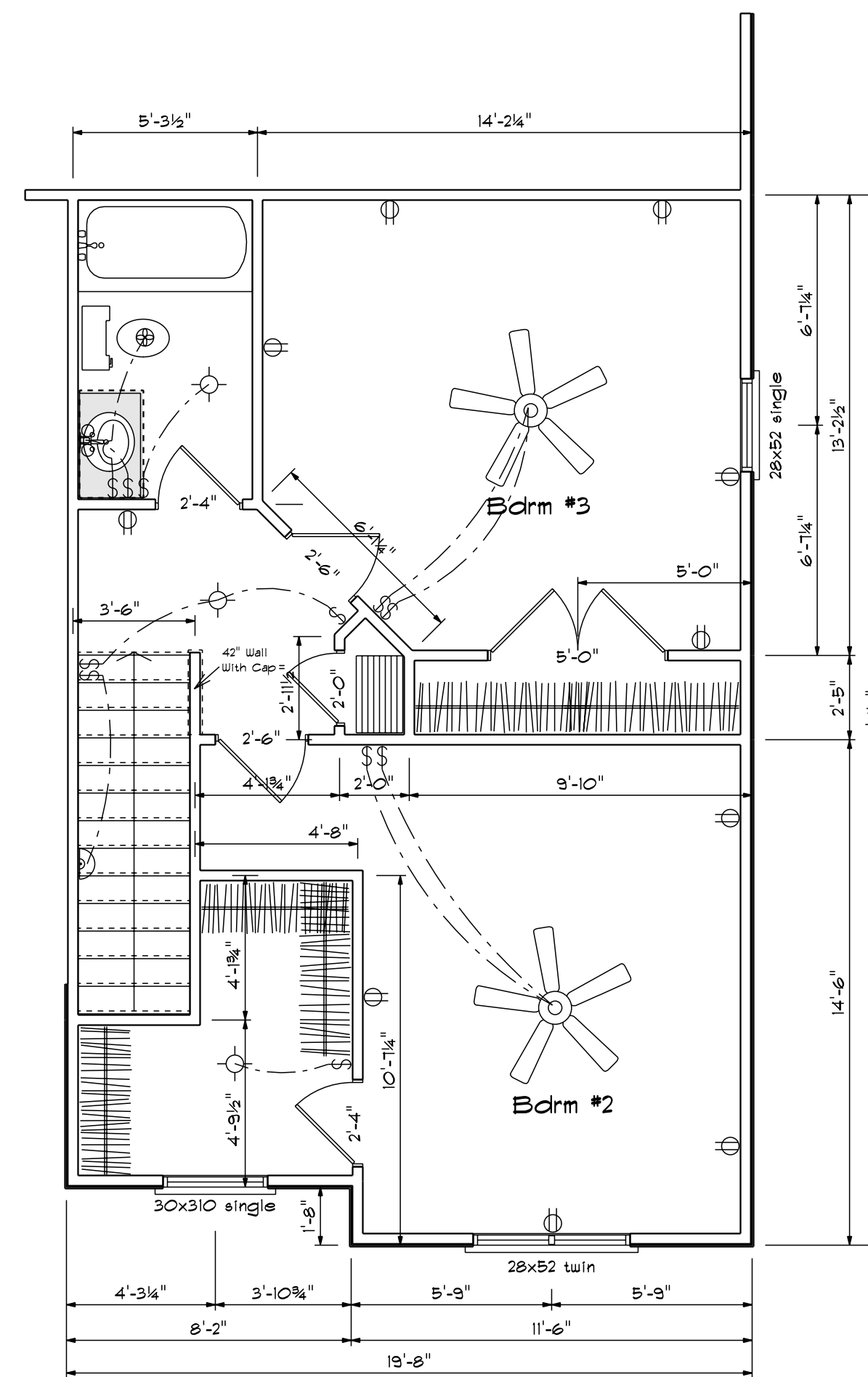
HDR	Size	Length
1	2x10	3' 3 1/2"
2	2x12	5' 7 1/2"
3	2x10	3' 3 1/2"
4	2x10	3' 3 1/2"

FIRST FLOOR OPENING SCHEDULE			
PRODUCT CODE	SIZE	HINGE	COUNT
32X80 COLONIAL A 1	2'-8"	R	1
36X80 Entry	3'-0"	L	1
28 Double French Center Open	5'-4"	NL	1
108X84 - 4 PANEL - 2 WINDOW (Optional)	9'-0"	U	1
192X84 - 8 PANEL - 4 WINDOW	16'-0"	U	2
2-6 Door Unit	2'-6"	L	1
2-0 Door Unit	2'-0"	L	1
2-4 Door Unit	2'-4"	L	1
2-4 Door Unit	2'-4"	R	2
2-8 Door Unit	2'-8"	L	1
4-0 Double Hung Door Unit	4'-0"	LR	1
28X32 single	2'-8" x 3'-2"	N	1
28x52 single	2'-8" x 5'-2"	N	4
28x52 twin	4'-6" x 5'-2"	NN	2
1-0x4-0 glass block	4'-0" x 2'-0"	N	1

SECOND FLOOR OPENING SCHEDULE			
PRODUCT CODE	SIZE	HINGE	COUNT
2-0 Door Unit	2'-0"	R	1
2-6 Door Unit	2'-6"	R	1
2-0 Door Unit	2'-0"	R	1
2-0 Door Unit	2'-0"	L	1
2-4 Door Unit	2'-4"	L	1
2-6 Door Unit	2'-6"	R	1
2-6 Door Unit	2'-6"	L	1
3-0 Double Hung Door Unit	3'-0"	LR	2
4-0 Double Hung Door Unit	4'-0"	LR	1
28x52 single	2'-8" x 5'-2"	N	1
28x52 single	2'-8" x 5'-2"	N	2
28x52 twin	4'-6" x 5'-2"	NN	1
30x32 single	3'-0" x 3'-2"	N	1



Second Floor Plan



(Optional) Bdrm #2  
+ 58 Sq.Ft.

Bass Designs  
2121 Chimney Pt.  
Linden N.C. 28356  
910-864-9310

DATE 6/2/2020

REVISED

DRAWING\*

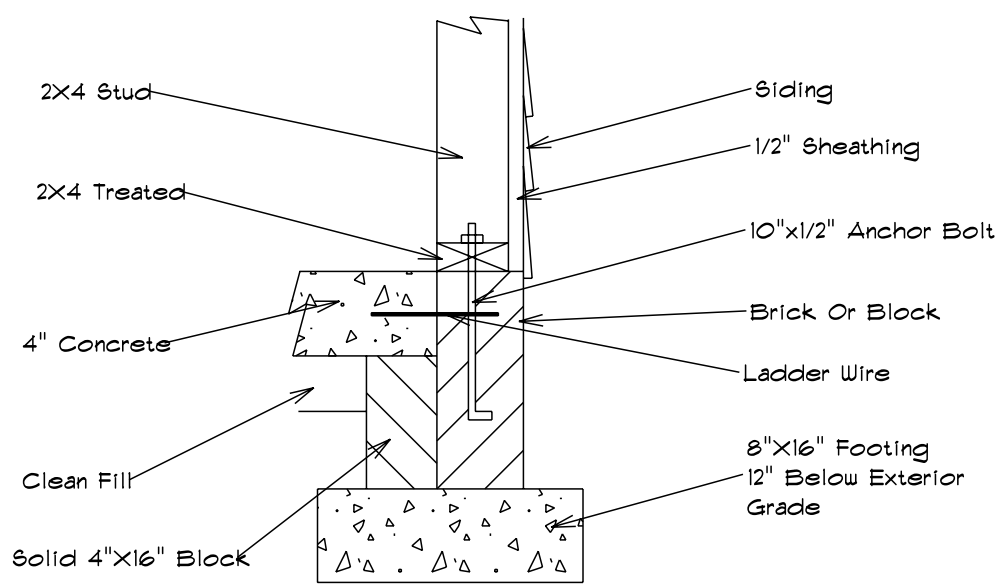
SCALE 1/4"

DRAWN BY

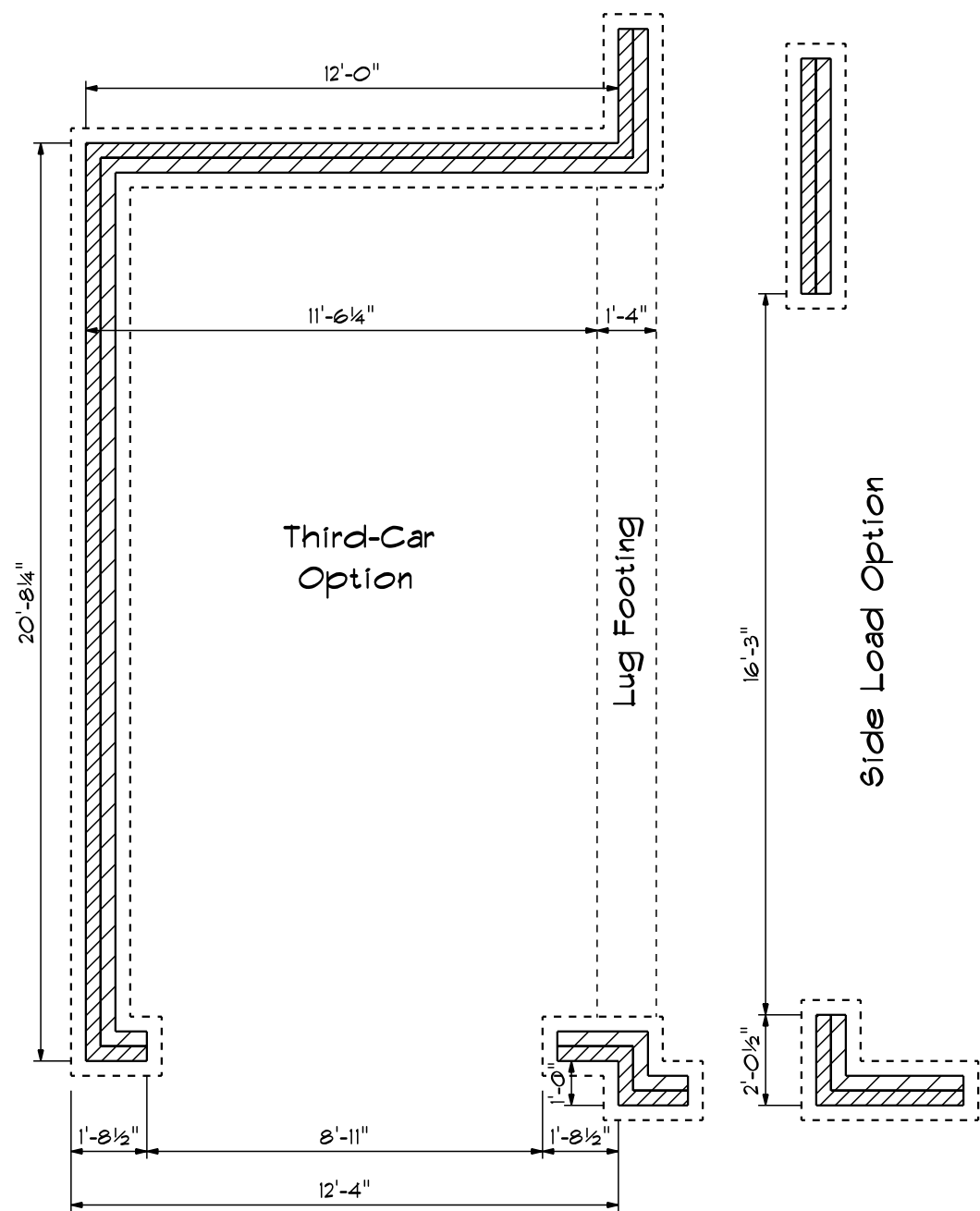
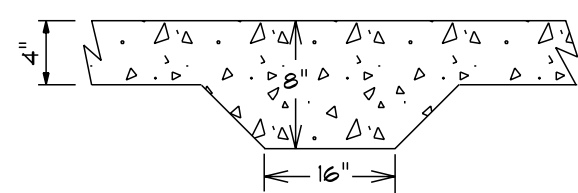
APPROVED

The Stockton XL

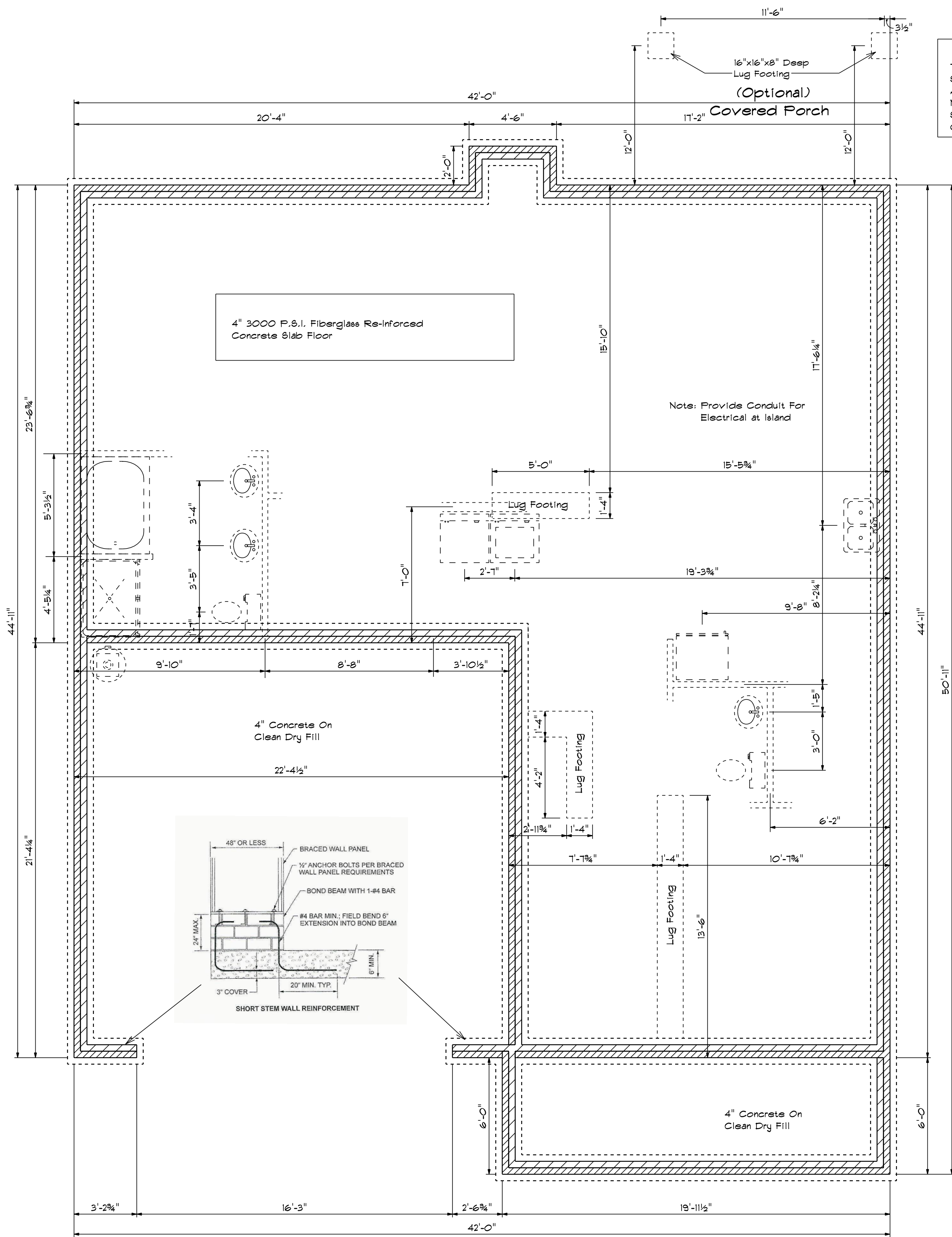
**Foundation Detail Siding**



**Lug Footing Detail**

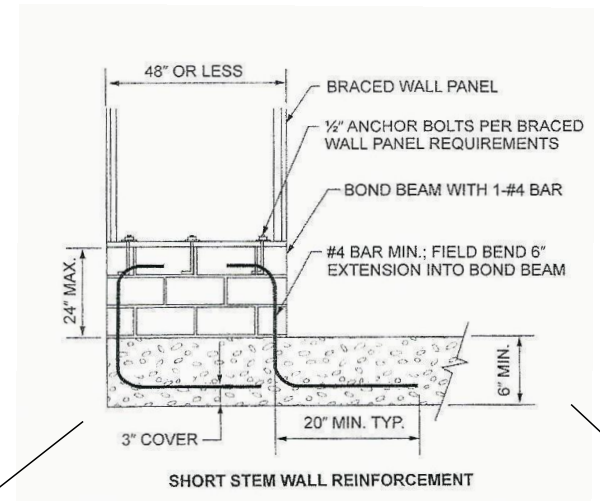


**Foundation Plan**



**Foundation Anchorage**  
 The Wood Sole Plats At Exterior Walls On Monolithic Slabs Shall Be Anchored To The Foundation With Anchor Bolts Spaced A Maximum Of 6' On Center And Not More Than 12" From The Corner. Anchor Bolts Shall Be At Least 1/2" In Diameter And Extend A Minimum Of 1" Into Concrete.

This Plan is Designed To Meet The Requirements Of The 2012 Residential Building Code

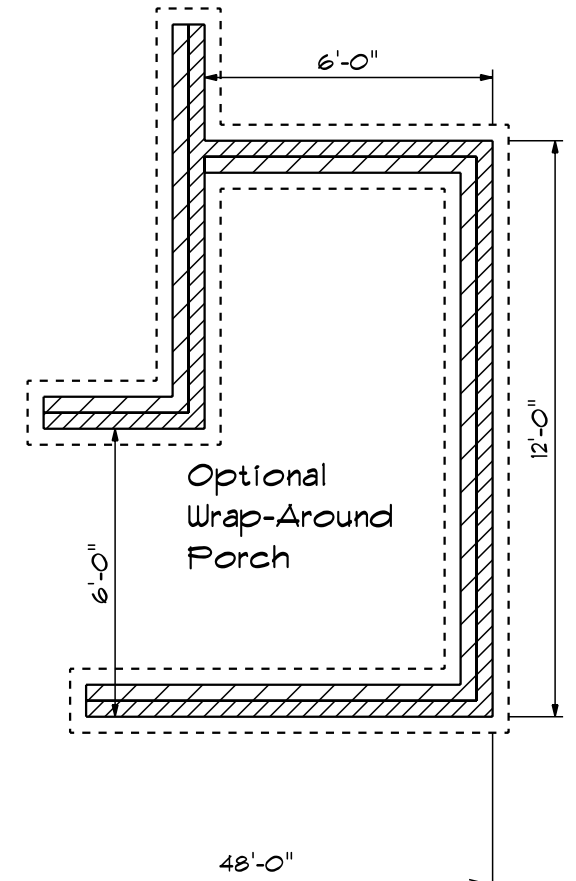


Base Designs  
 2727 Chimney Pt.  
 Linden N.C. 28356  
 910-864-1253

DATE 6/6/2020  
 REVISION  
 DRAWING\*

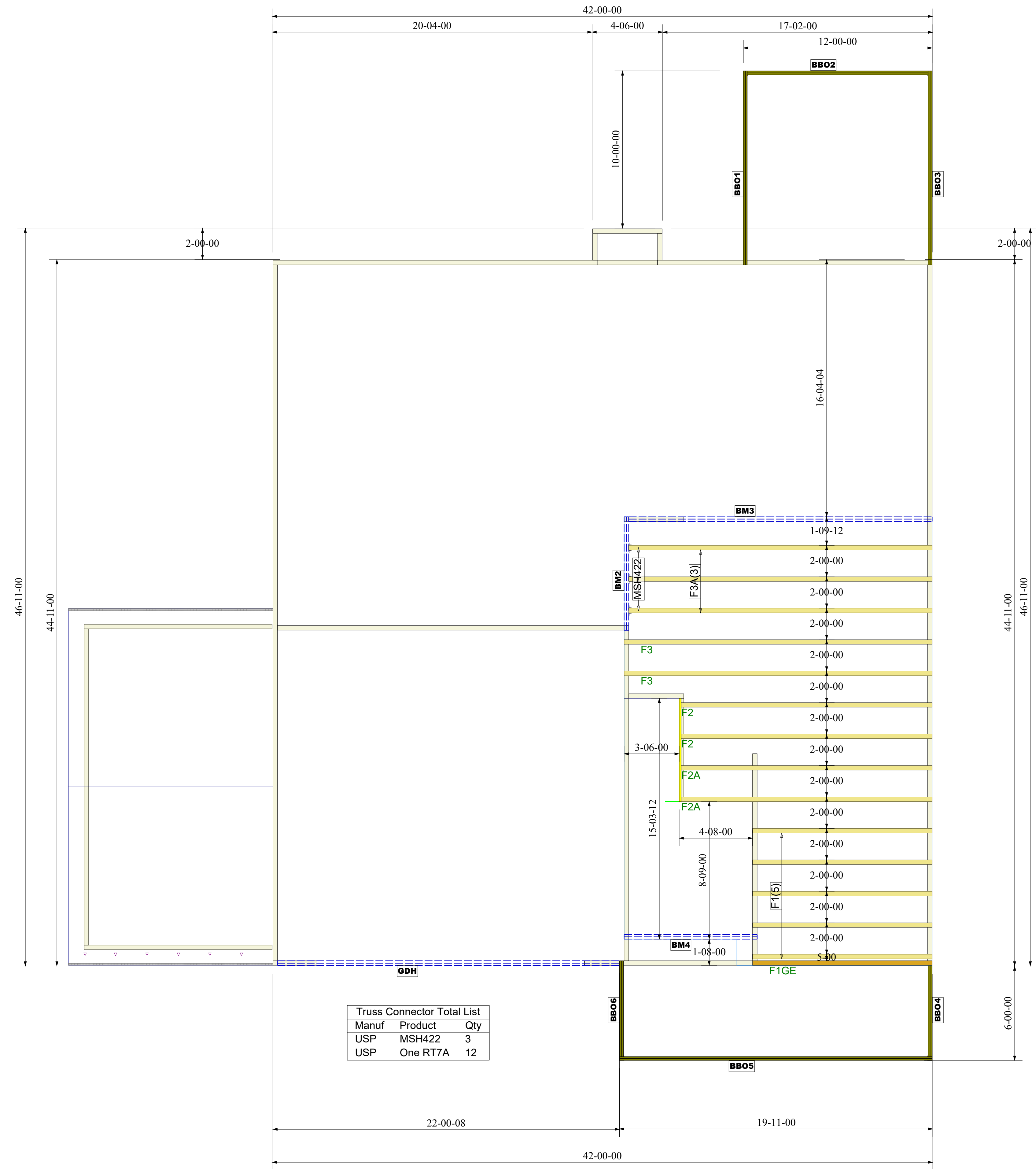
SCALE 1/4"  
 DRAWN BY  
 APPROVED

**The Stockton XL**



REVISIONS	
DATE	BY

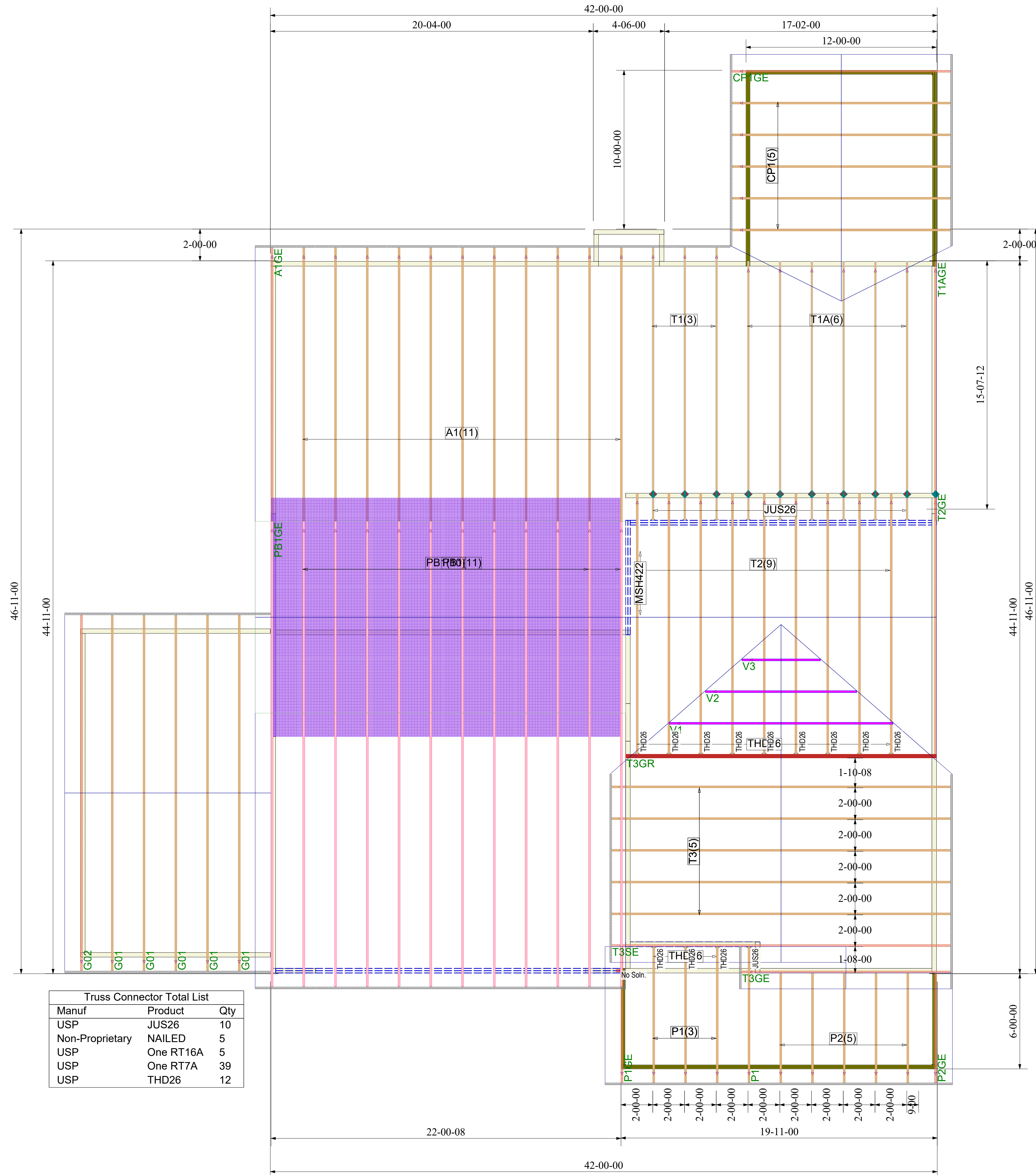
PROJECT NUMBER
SHEET NUMBER
<b>1 / 1</b>



Truss Connector Total List		
Manuf	Product	Qty
USP	MSH422	3
USP	One RT7A	12

Products					
PlotID	Length	Product	Plies	Net Qty	Fab Type
GDH	22-00-00	2.0 RigidLam DF LVL 1-3/4 x 14	2	2	FF
BM3	20-00-00	2.0 RigidLam DF LVL 1-3/4 x 14	2	2	FF
BM4	10-00-00	2.0 RigidLam DF LVL 1-3/4 x 14	2	2	FF
BM2	8-00-00	2.0 RigidLam DF LVL 1-3/4 x 14	2	2	FF
BBO5	20-00-00	1-08 x 9-04 Generic Material	2	2	FF
BBO1	14-00-00	1-08 x 9-04 Generic Material	2	2	FF
BBO3	14-00-00	1-08 x 9-04 Generic Material	2	2	FF
BBO2	12-00-00	1-08 x 9-04 Generic Material	2	2	FF
BBO4	8-00-00	1-08 x 9-04 Generic Material	2	2	FF
BBO6	8-00-00	1-08 x 9-04 Generic Material	2	2	FF
PBO1	10-00-00	3-08 x 3-08 Generic Material	1	1	FF
PBO2	10-00-00	3-08 x 3-08 Generic Material	1	1	FF
PBO3	10-00-00	3-08 x 3-08 Generic Material	1	1	FF
PBO4	10-00-00	3-08 x 3-08 Generic Material	1	1	FF

**FLOOR TRUSS FRAMING**  
 DRAWING SCALE : NTS



# ROOF TRUSS FRAMING

DRAWING SCALE : NTS



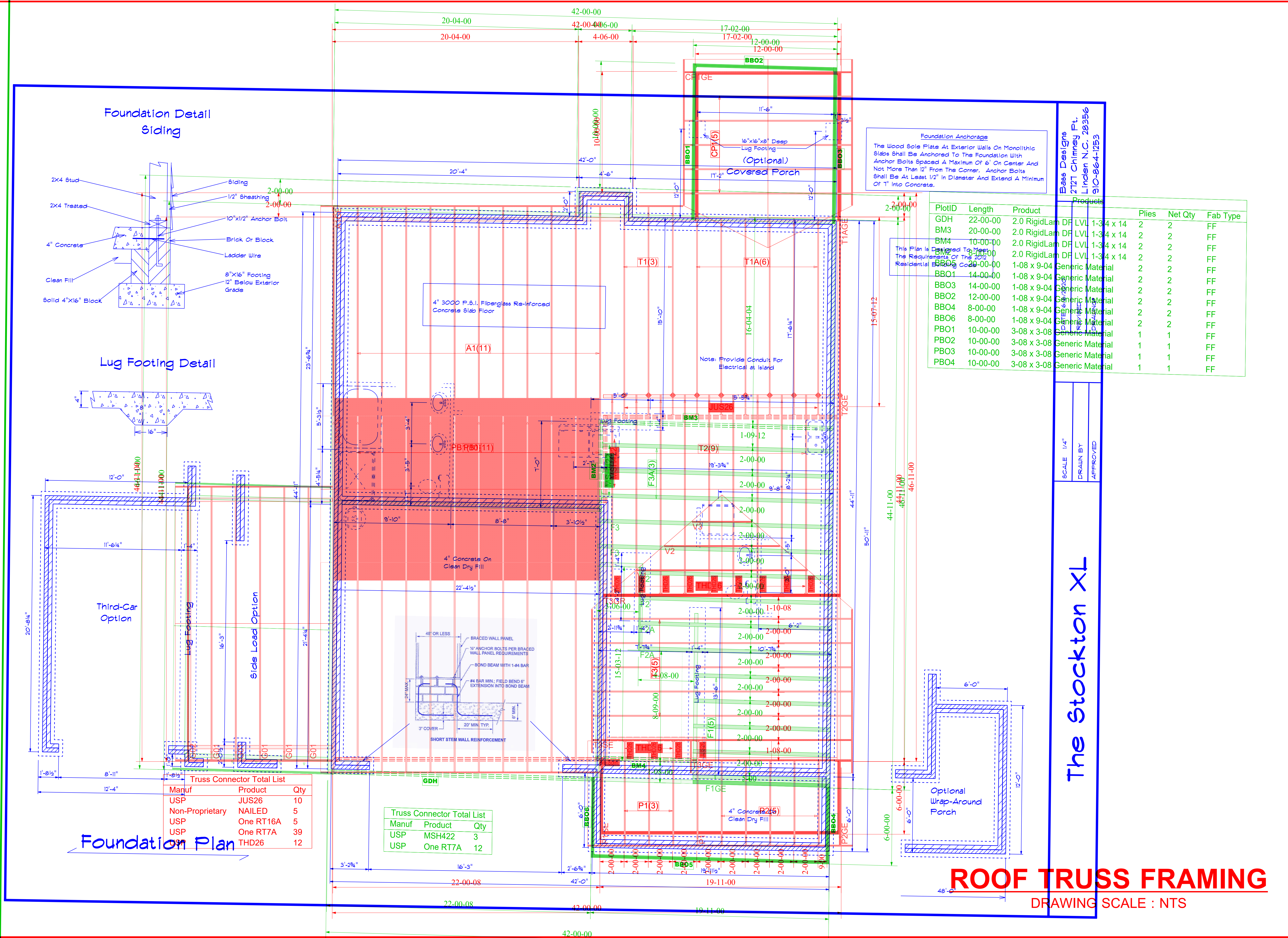
Gary Robinson Homes  
 Stockton XL plan  
**ROOF TRUSS PLACEMENT PLAN**

REVISIONS	
DATE	BY

PROJECT NUMBER  
 SHEET NUMBER  
**1 / 1**

REVISIONS	
DATE	BY

PROJECT NUMBER
SHEET NUMBER
<b>1 / 1</b>



**Foundation Anchorage**  
The Wood Sole Plate At Exterior Walls On Monolithic Slabs Shall Be Anchored To The Foundation With Anchor Bolts Spaced A Maximum Of 6' On Center And Not More Than 12" From The Corner. Anchor Bolts Shall Be At Least 1/2" In Diameter And Extend A Minimum Of 1" Into Concrete.

PlotID	Length	Product	Plies	Net Qty	Fab Type
GDH	22-00-00	2.0 RigidLam DF LVL 1-3/4 x 14	2	2	FF
BM3	20-00-00	2.0 RigidLam DF LVL 1-3/4 x 14	2	2	FF
BM4	10-00-00	2.0 RigidLam DF LVL 1-3/4 x 14	2	2	FF
BM5	8-00-00	2.0 RigidLam DF LVL 1-3/4 x 14	2	2	FF
BBO1	14-00-00	1-08 x 9-04 Generic Material	2	2	FF
BBO3	14-00-00	1-08 x 9-04 Generic Material	2	2	FF
BBO2	12-00-00	1-08 x 9-04 Generic Material	2	2	FF
BBO4	8-00-00	1-08 x 9-04 Generic Material	2	2	FF
BBO6	8-00-00	1-08 x 9-04 Generic Material	2	2	FF
PBO1	10-00-00	3-08 x 3-08 Generic Material	1	1	FF
PBO2	10-00-00	3-08 x 3-08 Generic Material	1	1	FF
PBO3	10-00-00	3-08 x 3-08 Generic Material	1	1	FF
PBO4	10-00-00	3-08 x 3-08 Generic Material	1	1	FF

Bass Designs  
2121 Chimney Pt.  
Linden N.C. 28356  
910-864-1253

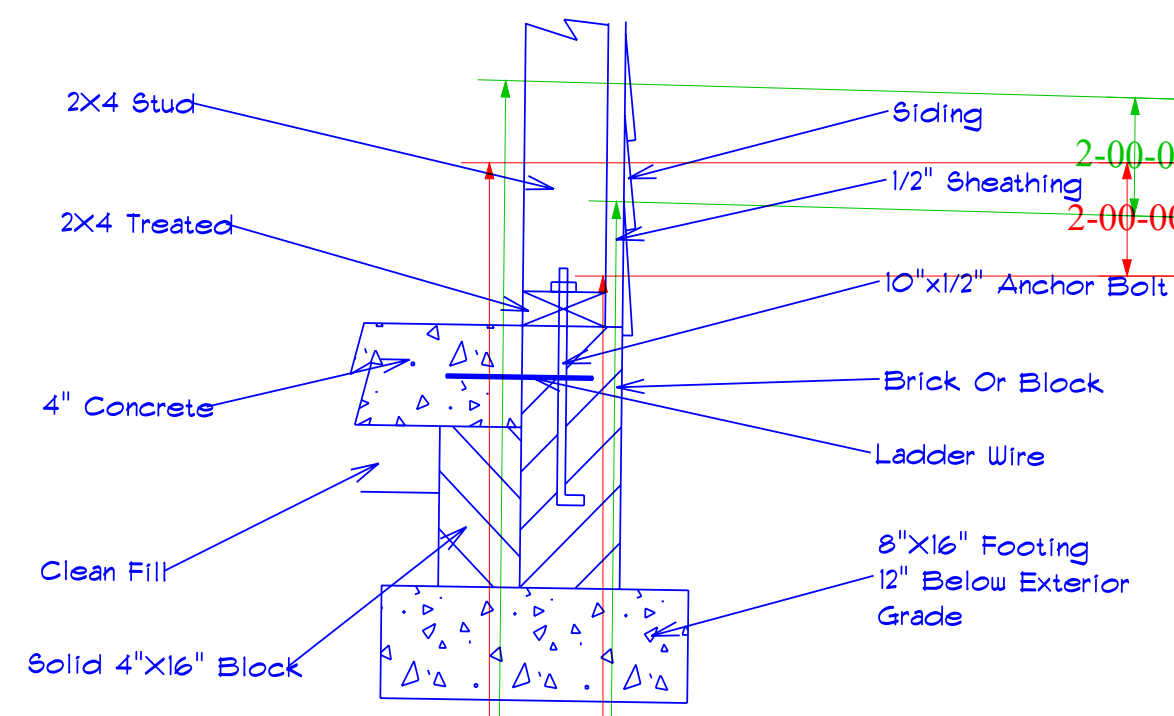
SCALE 1/4"  
DRAIN BY  
APPROVED

The Stockton XL

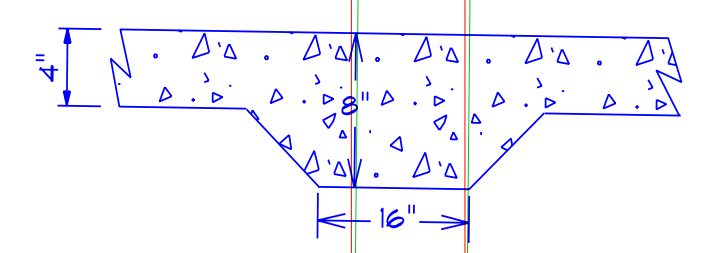
**ROOF TRUSS FRAMING**

DRAWING SCALE : NTS

**Foundation Detail Siding**



**Lug Footing Detail**



**Third-Car Option**

**Truss Connector Total List**

Manuf	Product	Qty
USP	JUS26	10
Non-Proprietary	NAILED	5
USP	One RT16A	5
USP	One RT7A	39
USP	THD26	12

**Truss Connector Total List**

Manuf	Product	Qty
USP	MSH422	3
USP	One RT7A	12

**Foundation Plan**

**FLOOR TRUSS FRAMING**