

THIS LAYOUT IS TO BE USED AS A TRUSS PLACEMENT GUIDE ONLY.
PLEASE REFER TO BUILDING PLANS FOR BUILDING CONSTRUCTION AND DETAILS,
SUCH AS PLUMBING OR DUCT DROPS.

CONSTRUCTION COPY-
FOR FIELD USE

Job #

Q-2001256

156 East Main
156 East Main St
Coats NC

Notes:
1. Exterior dimensions shown are assumed to be:
 Out-to-out of stud
 Out-to-out of sheathing
2. Adjust truss locations as needed for plumbing and mechanical clearance. Unless otherwise noted, trusses may be shifted as long as O.C. spacing is not exceeded.
3. Do not cut, drill, or otherwise damage any part of any truss without prior approval from Peak Truss. Do not install trusses that are damaged, are not properly fabricated, or do not have adequate bearing.
4. Do not approve drawings if any information herein is unclear. Once ordered trusses will be fabricated as approved.
5. Please contact Peak Truss Builders with any questions. We are available to help any way we can. We can be reached at 919-545-5555 or sales@peaktruss.com

Roof Truss Loading per 2018 NC Residential Code
 Top Chord Live Load 20# PSF
 Top Chord Dead Load 10# PSF
 Bottom Chord Live Load 0# PSF
 Bottom Chord Dead Load 10# PSF

Trusses are designed for additional storage load wherever a 42"x24" box will fit between the webs.

△ - This symbol denotes left end of truss as shown on truss drawings

● - Approximate location of toilet drop. Builder please confirm.

Truss connections by others:

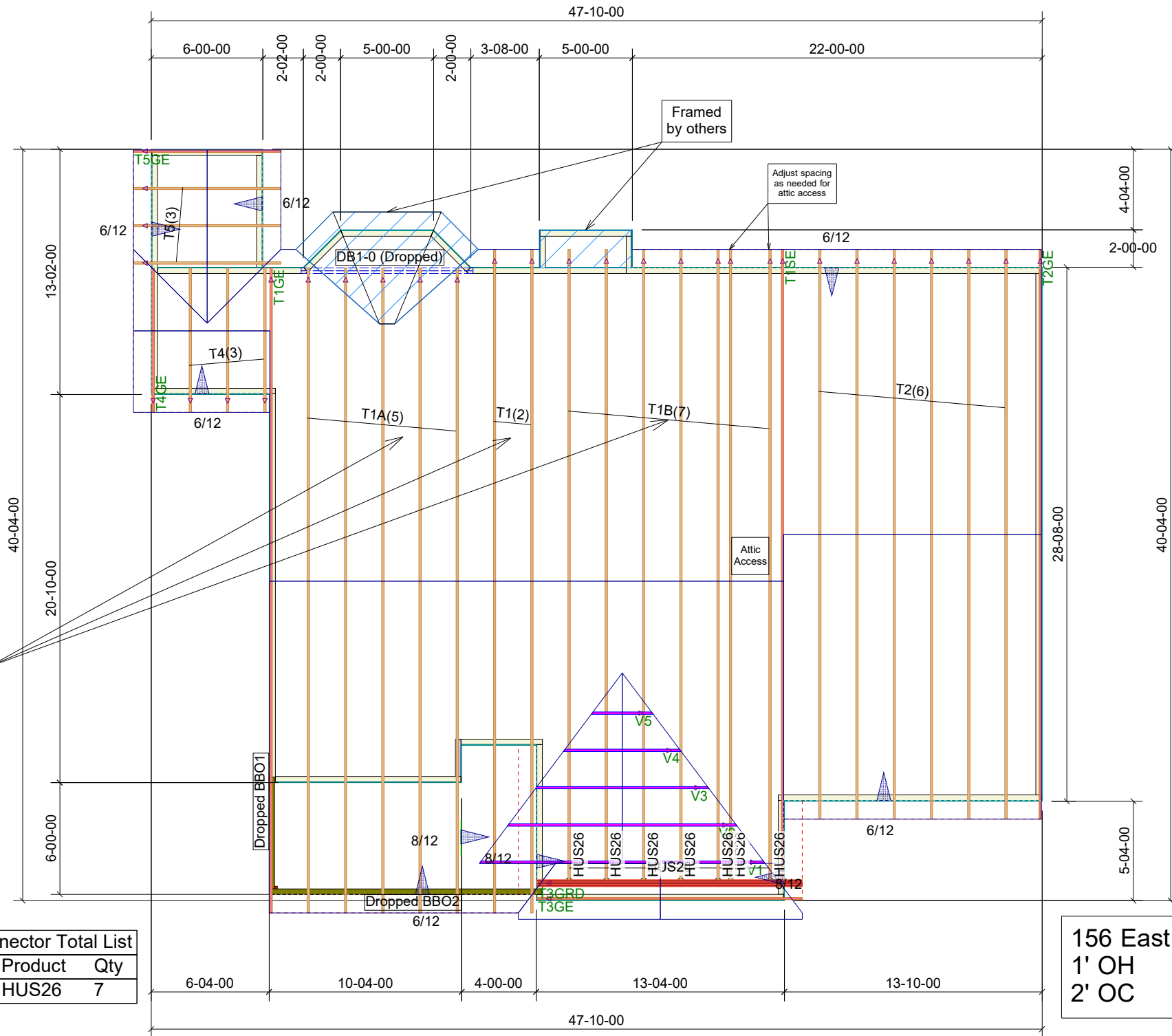
⊕ - Nailed
 ⊔ - Ledger

Date Quoted:
6/1/2020 12:00:00 AM

Designer:
Aron Meeks

Guy C Lee - Clayton
151 Hwy 42 E
Clayton, NC
27520

Peak Truss
Builders, LLC
PO Box 340, New Hill, NC 27562



Trusses are NOT symmetrical
Do not install backwards

Truss Connector Total List		
Manuf	Product	Qty
USP	HUS26	7

156 East Main
1' OH
2' OC

Products					
PlotID	Length	Product	Plies	Net Qty	Fab Type
DB1-0 (Dropped)	10'-00"-00	1-3/4X9-1/4 LP-LVL 2900Fb-2.0E	2	2	MFD