

**NOTES:**

**1. For all layouts based on plans that have been sealed by an engineer:**

This is a placement plan only. This layout is to be used in congruence with the plans sealed by the engineer of record. TBC is not responsible for the design of the floor system indicated. Please see the engineer's plans for all structural information, bolts/screw/nail pattern, connections, hardware, loading information, etc..

**2. For all layouts based on plans not sealed by an engineer:**

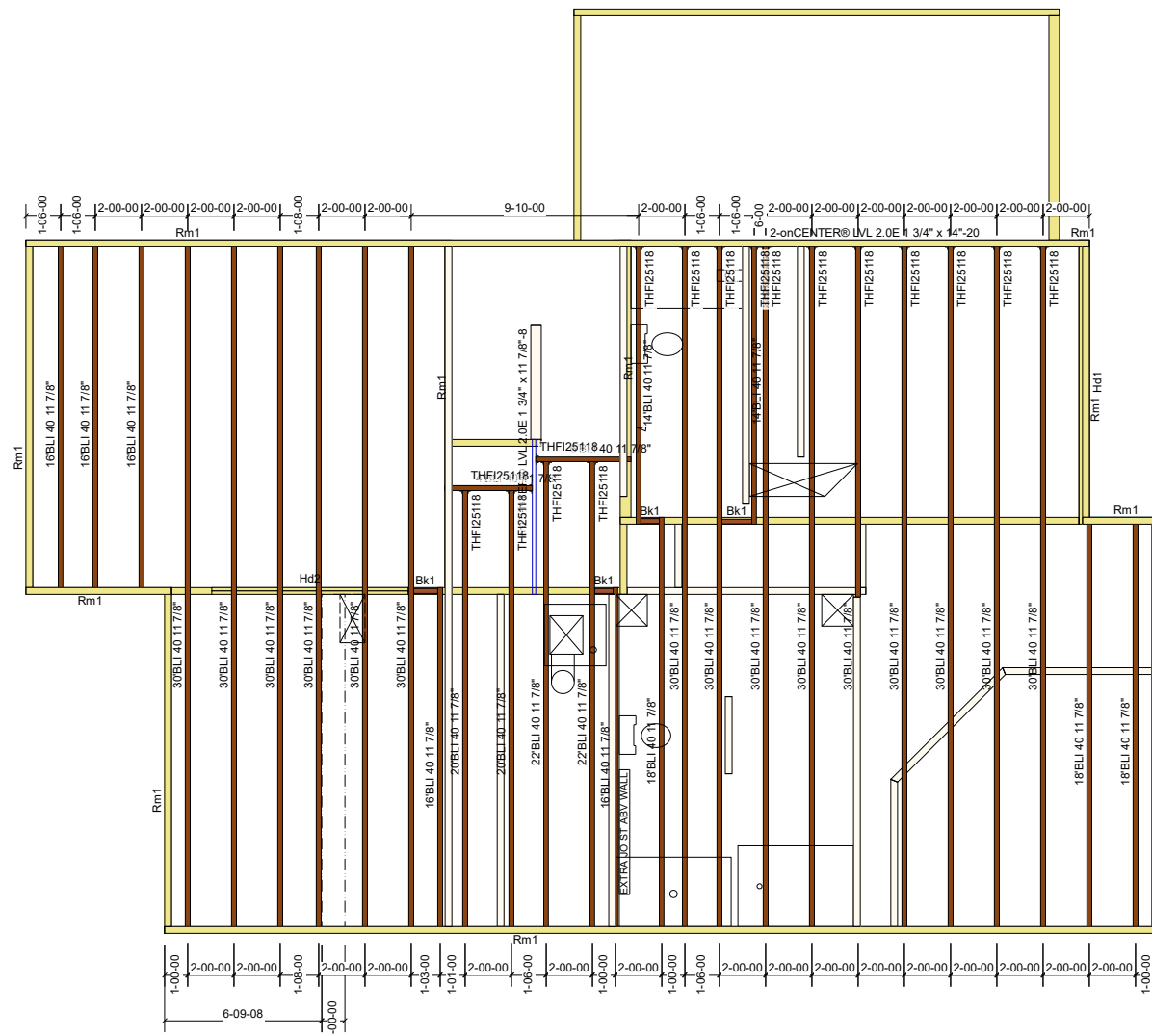
This design is intended to meet NCBC based on the design loadings indicated or not indicated, based on the minimum required loadings per code. All EWP designs are to be reviewed and approved by a structural engineer of record or the general contractor of record prior to installation. It is recommended that all designs are to be reviewed and stamped by a local engineer prior to shipment. Please refer to the Blulinx Installation Guide for all connections, Solid blocking, web filling information, etc. All concentrated loads bearing through the roof and floor systems must be solid blocked in order to avoid any crushing of EWP material.

**3. General Installation Notes:**

I-Joists require 1 3/4" minimum bearing and should be nailed to the bearing plate with one sinker nail on each side.

I-Joist Rim and onCenter Rimboard should be nailed to the bearing plate with 8d nails @ 6" OC.

Side Loaded Double I-Joists shall be packed solid and connected with 2 rows of 10d nails @ 12" OC.

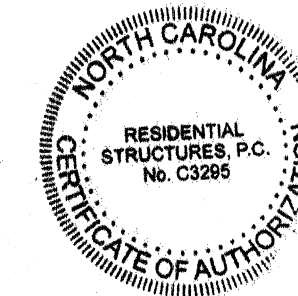


2311 'The Jasper'  
**SECOND FLOOR NOF-15**

PlotID	Length	Product	Piles	Net Qty	Fab Type
30BLI 40 11 7/8"	30-00-00	BLI 40 11 7/8"	1	15	MFD
22BLI 40 11 7/8"	22-00-00	BLI 40 11 7/8"	1	2	MFD
20BLI 40 11 7/8"	20-00-00	BLI 40 11 7/8"	1	2	MFD
18BLI 40 11 7/8"	18-00-00	BLI 40 11 7/8"	1	3	MFD
16BLI 40 11 7/8"	16-00-00	BLI 40 11 7/8"	1	5	MFD
14BLI 40 11 7/8"	14-00-00	BLI 40 11 7/8"	1	2	MFD
6BLI 40 11 7/8"	6-00-00	BLI 40 11 7/8"	1	1	FF
4BLI 40 11 7/8"	4-00-00	BLI 40 11 7/8"	1	1	FF
onCENTER@ LVL 2.0E 1 3/4" x 11 7/8"-8	8-00-00	onCENTER@ LVL 2.0E 1 3/4" x 11 7/8"	1	1	MFD
2-onCENTER@ LVL 2.0E 1 3/4" x 14'-20	20-00-00	onCENTER@ LVL 2.0E 1 3/4" x 14'	2	2	MFD
Rm1	12-00-00	onCENTER@ Rim SE 1 1/8" x 11 7/8"	1	13	FF
Bk1	4-00-00	BLI 40 11 7/8"	1	1	MFD

PlotID	Length	Product	Piles	Net Qty	Fab Type
Hd2	10-00-00	onCENTER@ LVL 2.0E 1 3/4" x 9 1/4"	2	2	MFD
Hd1	14-00-00	onCENTER@ LVL 2.0E 1 3/4" x 11 7/8"	1	3	FF

Qty	Manuf	Product	Flange	Skew	Slope
11		THF25118	None	-	-
4		THF25118	None	-	-
2		THF25118	None	-	-



**RESIDENTIAL STRUCTURES, P.C.**  
3410 N. Davidson St.  
Charlotte, N.C. 28205  
Seal For Structural Only

**The Building Center**  
Engineered Wood Division  
**2nd Floor Placement Plan**

Plan: **20-570**  
2311 'The Jasper'

**True Homes**  
Job: **Norris Farm Lot 15**

Date: 6/4/2020 Scale: 1/8"=1'-0"

Designed By: JA

Checked By: RR Revised By:

Sheet: **1 of 1**