

**OWNER / CONTRACTOR NOTES:**

1. THE SEALING OF THIS PLAN AUTHORIZES THE CONSTRUCTION FROM THESE PLANS FOR ONE HOUSE ON ONE LOT. UNSEALED PLANS MUST NOT BE USED FOR CONSTRUCTION OR MODIFICATION FROM THESE PLANS MUST BE FROM THE LATEST APPROVED DATE PLANS, INCLUDING REVISIONS AND ADDENDUMS.
2. CONSTRUCTION DEVIATING FROM THESE PLANS WILL INVALIDATE THEIR PLANS FROM THE ARCHITECT/ENGINEER. ANY CHANGES, HOME VEX, THE ARCHITECT/ENGINEER MAY BE OBTAINED FOR A FEE TO VERIFY THE FEASIBILITY AND COMPLIANCE OF ANY CHANGES. HOWEVER, THE ARCHITECT/ENGINEER ASSUMES ALL RISK FROM DEVIATING FROM THESE PLANS.
3. DO NOT SCALE DRAWINGS, BUT RATHER INQUIRE OF DESIGNER, REPRODUCTION OF THESE PLANS IS PROHIBITED UNLESS GRANTED WRITTEN CONSENT FROM DESIGNER.
4. THE OWNER AND/OR CONTRACTOR IS RESPONSIBLE FOR OBTAINING THE FOLLOWING PERMITS FROM THE LOCAL JURISDICTION: PERMIT FOR CONSTRUCTION, SURVEYING, TOPOGRAPHIC STUDIES, GEOTECHNICAL REPORTS, AND SEPTIC PERMITS. INTERIOR CASEWORK DESIGN, PLUMBING, MECHANICAL, AND ELECTRICAL DESIGN.

**CONSTRUCTION NOTES:**

- THE FOLLOWING IS A NON-EXHAUSTIVE LIST OF SOME COMMONLY USED CODE REQUIREMENTS AND ARE REFERENCED IN THE CONSTRUCTION FROM THESE PLANS. SEE THE N.C. RESIDENTIAL CODE BOOK FOR MORE INFO.
1. (R202.4) ALL GLAZING WITHIN 2' OF EITHER SIDE OF A DOOR IN A CLOSED POSITION AND ON THE SAME LEVEL SHALL BE REINFORCED WITH AN ALUMINUM OR STEEL STRIP OR ANOTHER MATERIAL OF EQUAL OR GREATER STRENGTH. THE REINFORCEMENT SHALL BE AT LEAST 3/8" ABOVE FLOOR, AND GLAZING IS WITHIN 3' OF FLOOR, 1" OF EDGE IS AT LEAST 3/8" ABOVE FLOOR, AND GLAZING IS WITHIN 3' OF EDGE OF LEADING AND FINISH EDGES. TEMPERED WINDOWS ALSO REQUIRED PER REMAINDER OF THIS CODE SECTION.
  2. (R310.1) ALL SLEEPING ROOMS AND BATHMENTS WITH HABITABLE SPACE SHALL HAVE AT LEAST TWO EXITS. ONE EXIT SHALL BE A DOOR TO THE OUTSIDE. THE SECOND EXIT SHALL BE EITHER A WINDOW OR DOOR TO AN ADJACENT ROOM OR TO THE OUTSIDE. THE DOOR TO THE SECOND EXIT SHALL BE OPENED BY A SINGLE THROW DEVICE. THE DOOR TO THE SECOND EXIT SHALL BE OPENED BY A SINGLE THROW DEVICE. THE DOOR TO THE SECOND EXIT SHALL BE OPENED BY A SINGLE THROW DEVICE.
  3. (R310.2) ALL WINDOW EDGES SHALL BE FINISHED WITH A FINISH MATERIAL. THE FINISH MATERIAL SHALL BE AT LEAST 1/2" ABOVE FLOOR, AND FINISH MATERIAL SHALL BE AT LEAST 1/2" ABOVE FLOOR, AND FINISH MATERIAL SHALL BE AT LEAST 1/2" ABOVE FLOOR.
  4. (R310.3) WINDOW SILL RISE HEIGHT SHALL BE 5'-4" AND MINIMUM HEAD SHALL BE 5'-0".
  5. (R310.4) SHOCK PLATES SHALL BE INSTALLED AND INTERCONNECTED WITH BATTERY BACK-UP IN SLEEPING ROOMS AND EACH STORY. THE ONE OUTSIDE THE SLEEPING ROOMS WILL SATISFY THAT STORY.
  6. (R302.2) ALL LUMBER SHALL BE PRESSURE TREATED AND DRIED AFTER TREATMENT. ACCORDANCE WITH ANY A111 AND SHALL BEAK THE LABEL OF AN ACCEPTED AGENCY.
  7. (R302.1) BRUNING DAMPPROOFING SHALL BE APPLIED TO EXTERIOR FOUNDATIONS OF ALL FOUNDATIONS AND SHALL BE 6" MINIMUM ABOVE FINISH FLOOR.
  8. (R302.3) ALL ONE FOUNDATION VENT WITHIN 3' OF EACH CORNER (NOT ONE EACH SIDE OF EACH CORNER).
  9. (R302.4) FLASH ALL VALVES AND WALL ROOF INTERSECTIONS, AND CHIMNEY AND OTHER ROOF PENETRATIONS. USE ICE AND WATER SHIELD ON ALL ROOFS LESS THAN 4:12 SLOPE. FLASHING TO BE NON-CORROSIIVE.
  10. (R307.1) BUILDER TO PROVIDE 20"x20" ATTIC ACCESS IN ALL ATTICS WITHOUT STAIR ACCESS. LOCATE ACCESS TO PROVIDE A 30" CLEAR SPACE ABOVE ACCESS DOORSTEP.
  11. (R301.1) MASONRY FIRE-RATE WALLS TO BE MIN. 8" THICK AND MIN. 2" TO 3" REBAR, ROUNDED MIN. 1/2" WIDER THAN FIRE-RATE WALLS. REBAR TO BE MIN. 3/8" FROM FIRE-RATE WALLS AND MIN. 1/2" FROM FIRE-RATE WALLS ON EACH SIDE.
  12. (R301.2) ALL MASONRY SHALL BE CONCRETE OR CMU. ALL MASONRY SHALL BE CONCRETE OR CMU. ALL MASONRY SHALL BE CONCRETE OR CMU.
  13. (R310.1) INSTALL APPROVED CARBON MONOXIDE ALARM OUTSIDE EACH BEDROOM AND IN IMMEDIATE VICINITY OF EACH SEPARATE SLEEPING AREA.

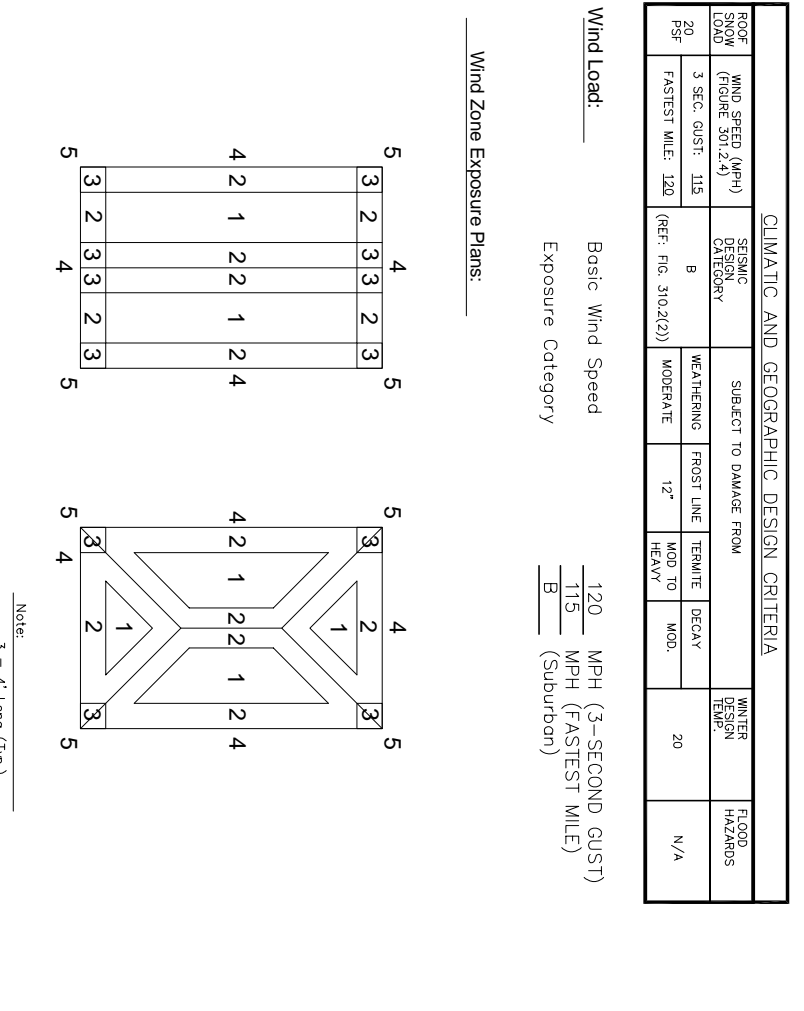
**BUILDING CODE NOTES:**

THIS PLAN HAS BEEN DESIGNED UNDER THE 2018 NORTH CAROLINA RESIDENTIAL CODE.

- APPLICABLE CODES:  
 N.C. FIRE CODE, 2018  
 N.C. MECHANICAL CODE, 2018  
 N.C. PLUMBING CODE, 2018  
 N.C. ELECTRICAL CODE, 2018  
 N.C. GAS CODE, 2018

CLIMATE ZONE	WIND SPEED	ICE LOAD	SEISMIC	WIND SPEED	ICE LOAD	SEISMIC
1	70	0.50	0.20	70	0.50	0.20
2	75	0.50	0.20	75	0.50	0.20
3	80	0.50	0.20	80	0.50	0.20
4	85	0.50	0.20	85	0.50	0.20
5	90	0.50	0.20	90	0.50	0.20

**CLIMATIC AND GEOGRAPHIC NOTES:**



**PROJECT DATA:**

LEAD DESIGN PROFESSIONAL	FIRM	NAME	LICENSE #	TELEPHONE #
Architectural	GM	Marc W. Mills, R.A.	8191/4646-4666	
Structural		Marc W. Mills, R.A.	8191/796-9466	
Interior				
Other				

**DESIGN DATA:**

**PROJECT SQUARE FOOTAGES**

SQUARE FOOTAGE	1,925
FIRST FLOOR HTD. =	1,060
SECOND FLOOR HTD. =	2,985
TOTAL HTD. SQ. FT. =	541
GARAGE =	288
SCREENED PORCH =	319

**INDEX OF DRAWINGS:**

CS	SHEET NAME
CS	Cover Sheet
A-1	Front & Right Elevations
A-2	Rear & Left Elevations
A-3	Sections & Details
A-4	First Floor Plan
A-5	Second Floor Plan
AS-1	Crawl Foundation/First Floor Framing
AS-2	Second Floor Framing
AS-3	Second Floor Ceiling Framing
AS-4	Roof Framing
D-1	Detail Sheet

**BUILDING DATA:**

Construction Type:	A-B	Number of Stories:	2
Use Group:	R-3	Building Height:	33'-4"
Mean Roof Height:	29'-4"	Basic Structural System:	Braced Wall
Soil Bearing Capacity:	2,000 psf (Presumptive)	Earthquake Control:	<input type="checkbox"/>
		Wind Control:	<input checked="" type="checkbox"/>

STRUCTURAL DESIGN BY  
 MARC W. MILLS, R.A.  
 DATE SEALED:  
 INVALID IF UNSEALED  
 NORTH CAROLINA LICENSE #759

4. GABRIEL DESIGN WILL NOT ASSUME ANY LIABILITY FOR EXPENSES ASSOCIATED WITH ERRORS AND OMISSIONS ON THESE DRAWINGS UNLESS OFFSET BY VERIFIED CONSTRUCTION SAVINGS AS A RESULT OF DESIGNER.  
 5. GABRIEL DESIGN RETAINS OWNERSHIP OF ALL OF DESIGNS DEPICTED AND IMPLIED HEREIN.  
 6. GABRIEL DESIGN IS NOT RESPONSIBLE FOR ESTIMATING, MAINTAINING, OR REGULATING CONSTRUCTION COSTS ASSOCIATED WITH THESE PLANS.

Glenwood Builders  
 New Home Plan  
 88 Florence Pines Lot 4  
 Fuquay Varina, NC - Permit Set

**gabriel design**  
 pwx architecture  
 raleigh, nc  
 email: gabreyesdesign@gmail.com  
 phone: (919) 491-5855

PROGRESS DATE: \_\_\_\_\_  
 ISSUE DATE: 04-14-20  
 DRAWN BY: GR  
 CHECKED BY: MW  
 REVISIONS: \_\_\_\_\_  
 DATE BY: \_\_\_\_\_ DESCRIBED: \_\_\_\_\_

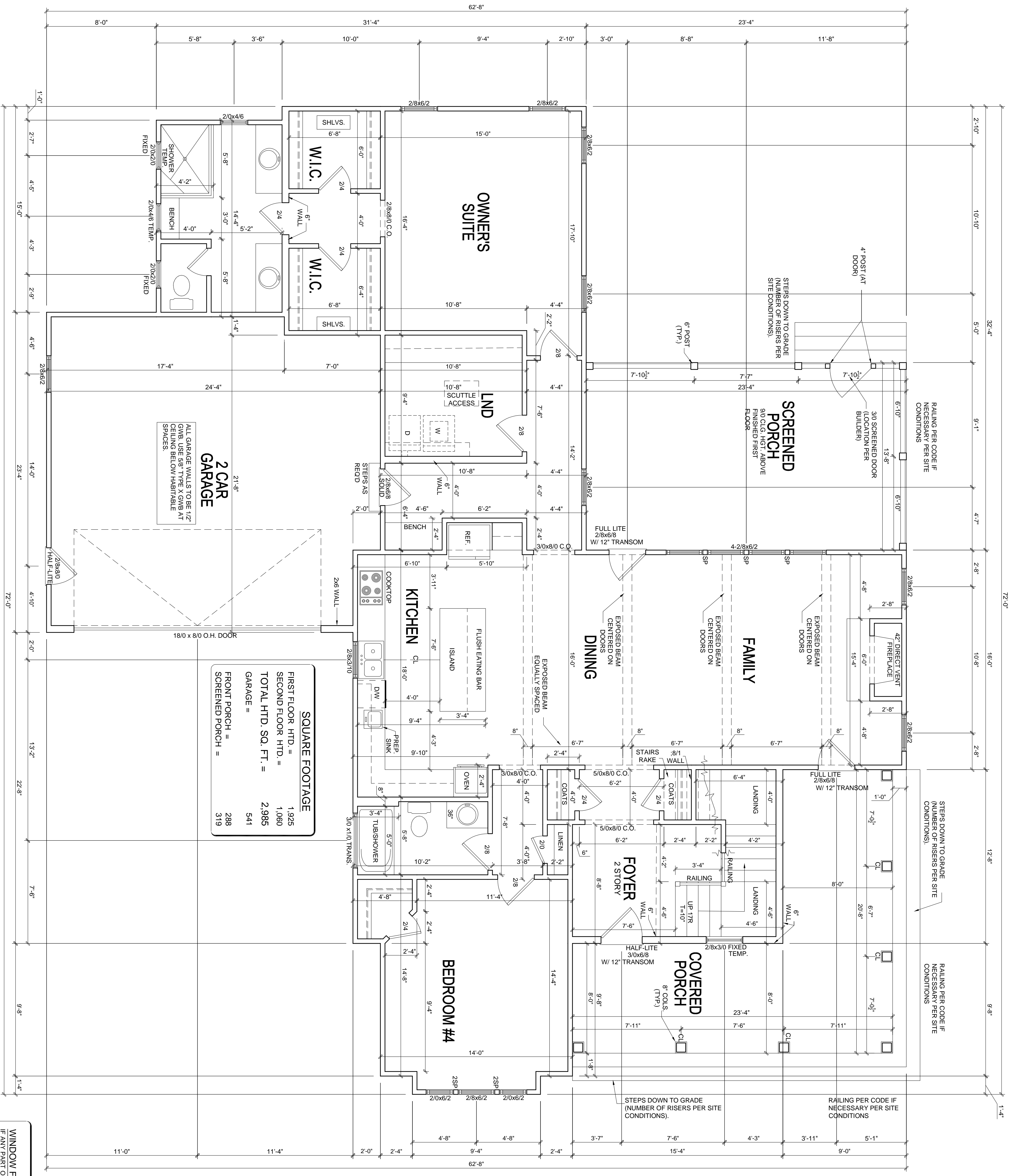
CONTRACT NO. \_\_\_\_\_  
 SHEET NO. **CS**  
 PLAN NO. **P-01220**











SQUARE FOOTAGE	
FIRST FLOOR HTD. =	1,925
SECOND FLOOR HTD. =	1,060
TOTAL HTD. SQ. FT. =	2,985
GARAGE =	
FRONT PORCH =	541
SCREENED PORCH =	288
	319

**FIRST FLOOR PLAN**  
 22X34 PRINTS SCALE: 1/4"=1'-0"  
 11X17 PRINTS SCALE: 1/8"=1'-0"

**ARCHITECTURAL PLANS WALL LEGEND**

- STANDARD STUD WALL INT OR EXT SEE ELEVATIONS FOR SIDING STYLE THICKNESS OF WALL NOTED IN PLAN NOTES OR AT WALL LOCATIONS
- STANDARD STUD WALL WITH 5" BRICK VENEER FOUNDATION WALL LEDGE STUD THICKNESS AS NOTED IN PLAN NOTES OR AT WALL LOCATIONS
- STANDARD STUD WALL WITH STACKED STONE VENEER STUD THICKNESS AS NOTED IN PLAN NOTES OR AT WALL LOCATIONS (NOTE: NO FOUNDATION SUPPORT IS REPRESENTED ON STRUCTURAL PLANS) IF STACKED STONE IS TO BE USED BUILDER MUST NOTIFY PLAN DESIGNER BEFORE FOOTINGS ARE POURED
- STANDARD STUD WALL WITH APPLIED STONE VENEER STUD THICKNESS AS NOTED IN PLAN NOTES OR AT WALL LOCATIONS (NOTE: NO FOUNDATION SUPPORT IS REPRESENTED ON STRUCTURAL PLANS) IF STACKED STONE IS TO BE USED BUILDER MUST NOTIFY PLAN DESIGNER BEFORE FOOTINGS ARE POURED
- STANDARD STUD WALL WITH LOW APPLIED STONE VENEERING SEE ELEVATIONS FOR HEIGHT & FINISH MATERIAL AT EXT STUD WALL ABOVE STUD THICKNESS AS NOTED IN PLAN NOTES OR AT WALL LOCATIONS
- STANDARD STUD WALL WITH 5" FOUNDATION LEDGE FOR LOW BRICK OR STACKED STONE VENEERING. SEE ELEVATIONS FOR HEIGHT & FINISH MATERIAL AT EXT STUD WALL ABOVE STUD THICKNESS AS NOTED IN PLAN NOTES OR AT WALL LOCATIONS
- HALF WALL WITH 1" CAP 42" HEIGHT UNLESS NOTED OTHERWISE ON PLANS

**GENERAL NOTES**

- WALL THICKNESS / ANGLES**  
 ALL EXTERIOR STUD WALLS ARE DRAWN 4" THICK U.N.O.  
 ALL INTERIOR STUD WALLS ARE DRAWN 4" THICK U.N.O.  
 ANGLED WALLS ARE DRAWN @ 45° U.N.O.
- EGRESS**  
 ALL BEDROOMS MUST HAVE AT LEAST ONE WINDOW WHICH CONFORMS TO EGRESS REQUIREMENTS FOR CLEAR OPENING HEIGHT AND WIDTH. IT IS THE CONTRACTOR'S RESPONSIBILITY TO VERIFY EGRESS SIZING PER CODE MAY VARY. CHOOSE MANUFACTURER AS PRODUCT SIZES MAY VARY.
- WALL/CEILING HEIGHTS**  
 WALL AND CEILING HEIGHTS NOTES ARE BASED ON NOMINAL 100 ON THE PLANS.  
 ALL VALTIED OR SLOPED CEILINGS ARE TO BE FURRED DOWN TO ACCOMMODATE REQUIRED GELING INSULATION INSULATION REQUIREMENTS.
- STAIRS**  
 STAIRS ARE MEASURED FROM NOSING TO NOSING (N.N.). MAXIMUM STAIR RISE HEIGHT TO BE NO GREATER THAN 8'-10"

**WINDOW FALL PREVENTION PROTECTION**

- IF ANY PART OF THE CLEAR OPENING OF THE OPERABLE PORTION OF A WINDOW IS LOCATED MORE THAN 2' ABOVE THE EXTERIOR GRADE THEN THE LOWEST PART OF THE CLEAR OPENING MUST BE AT LEAST 24" ABOVE THE FLOOR OF THE ROOM IN WHICH IT IS LOCATED.
  - EXCEPTIONS:
  - 1. THE WINDOW IS A FIXED UNIT
  - 2. THE WINDOW DOES NOT ALLOW THE PASSAGE OF A 4" INCH DIAMETER SPHERE.
  - 3. THE WINDOW IS EQUIPPED WITH A WINDOW FALL PREVENTION DEVICE MEETING ASTM F2090.
  - 4. THE WINDOW IS EQUIPPED WITH AN APPROVED WINDOW OPENING LIMITING DEVICE.
- NOTE: WHEN USED WITH AN EMERGENCY ESCAPE AND RESCUE WINDOW, OPENING LIMITING DEVICES AND FALL PREVENTION DEVICES MUST BE APPROVED FOR EMERGENCY ESCAPE AND RESCUE PROVISIONS.

4. GABRIEL DESIGN WILL NOT ASSUME ANY LIABILITY FOR EXPENSES ASSOCIATED WITH ERRORS AND OMISSIONS ON THESE DRAWINGS UNLESS OFFSET BY VERIFIED CONSTRUCTION SAVINGS AS A RESULT OF DESIGNER.  
 5. GABRIEL DESIGN RETAINS OWNERSHIP OF ALL OF DESIGNS DEPICTED AND IMPLIED HEREIN.  
 6. GABRIEL DESIGN IS NOT RESPONSIBLE FOR ESTIMATING, MAINTAINING, OR REGULATING CONSTRUCTION COSTS ASSOCIATED WITH THESE PLANS.

Glenwood Builders  
 New Home Plan  
 88 Florence Pines Lot 4  
 Fuquay Varina, NC - Permit Set

**gabriel design**  
 pwx architecture  
 raleigh, nc  
 email: gabereyesdesign@gmail.com  
 phone: (919) 491-5855

PROGRESS DATE	DATE BY	DESCRIPTION
ISSUE DATE: 04-14-20	DRAWN BY: GR	
CHECKED BY: MW		
REVISIONS		

PLAN NO. P-01220  
 SHEET NO. A-40  
 First Floor Plan



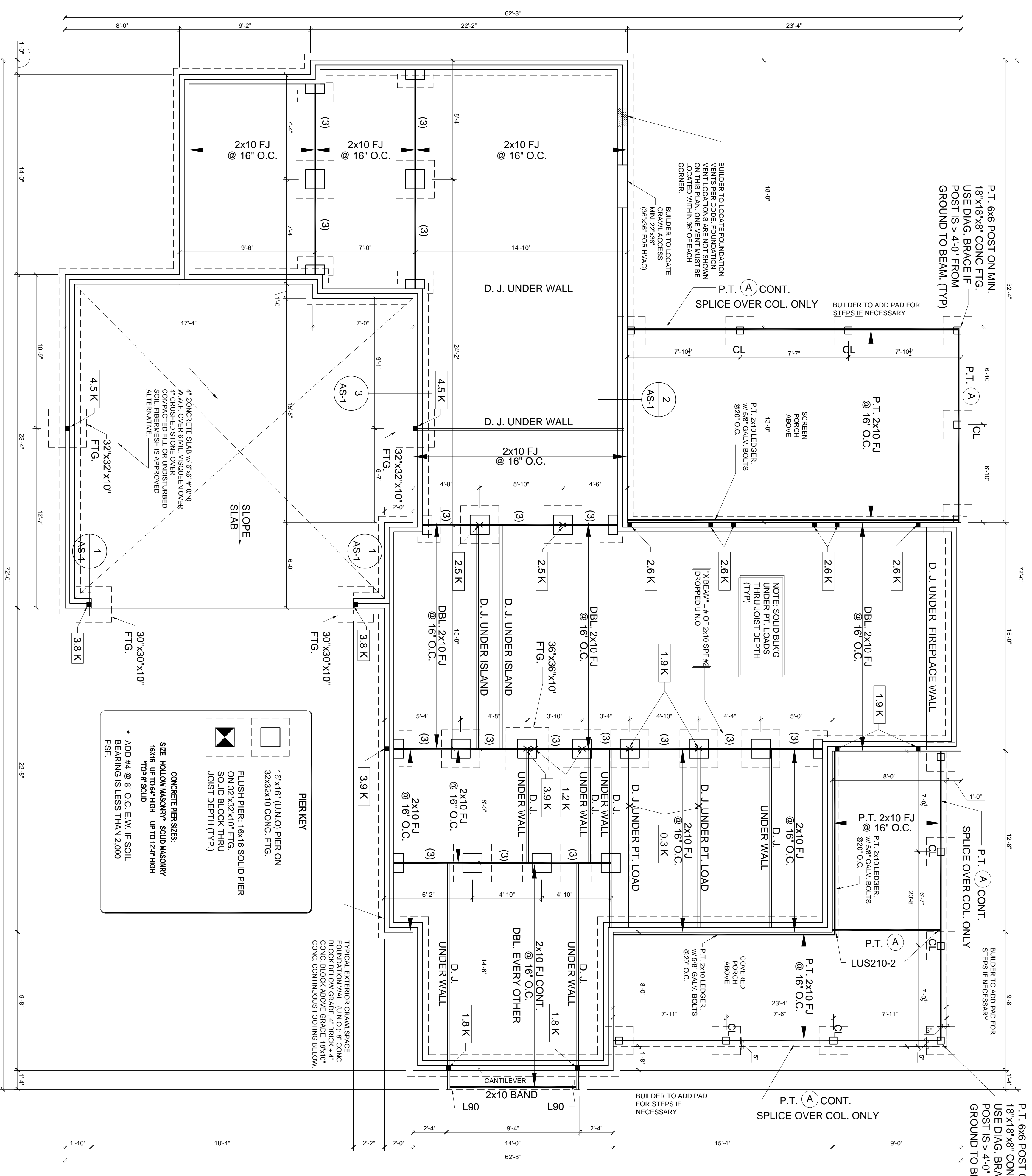
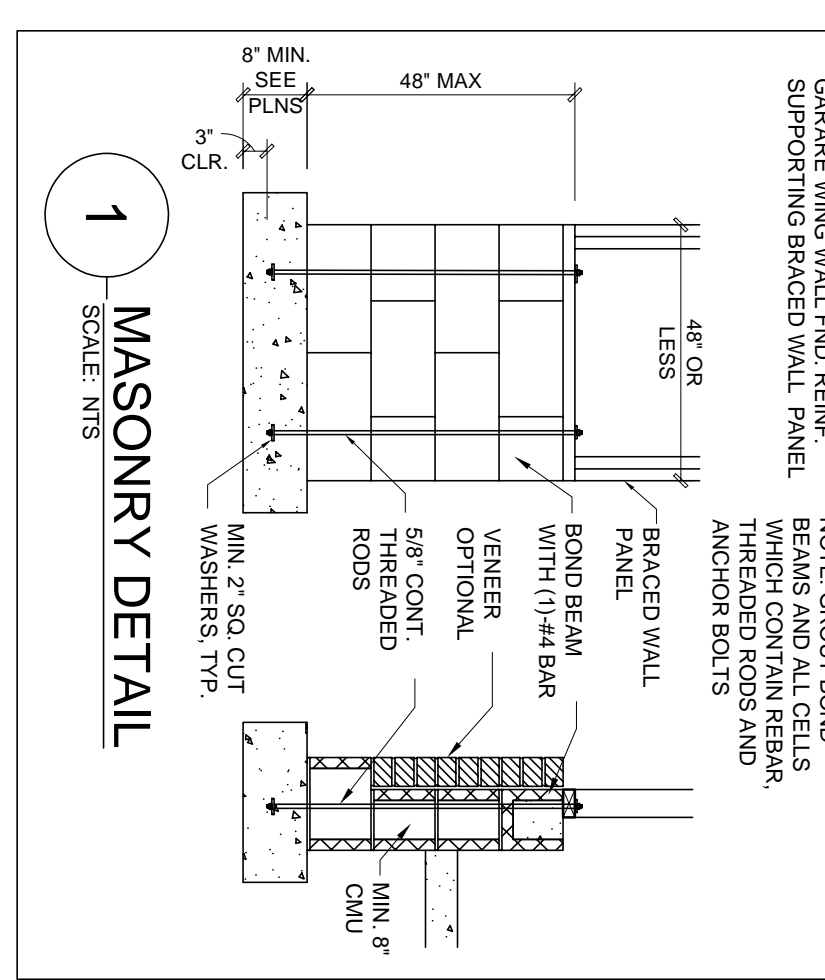
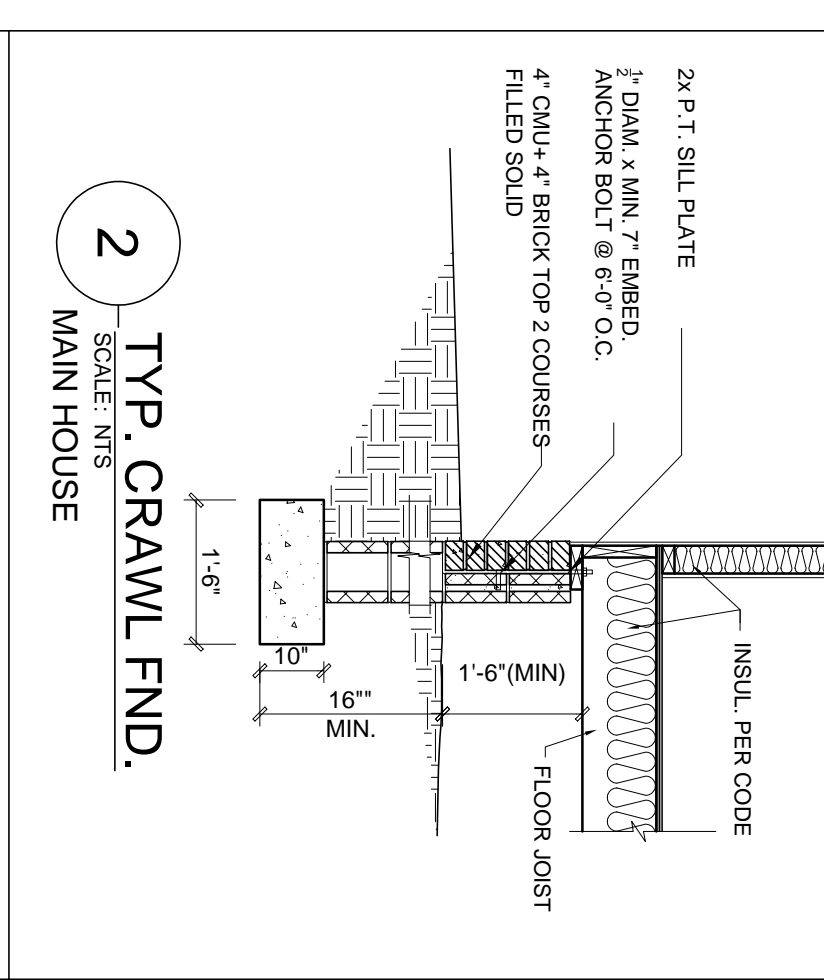
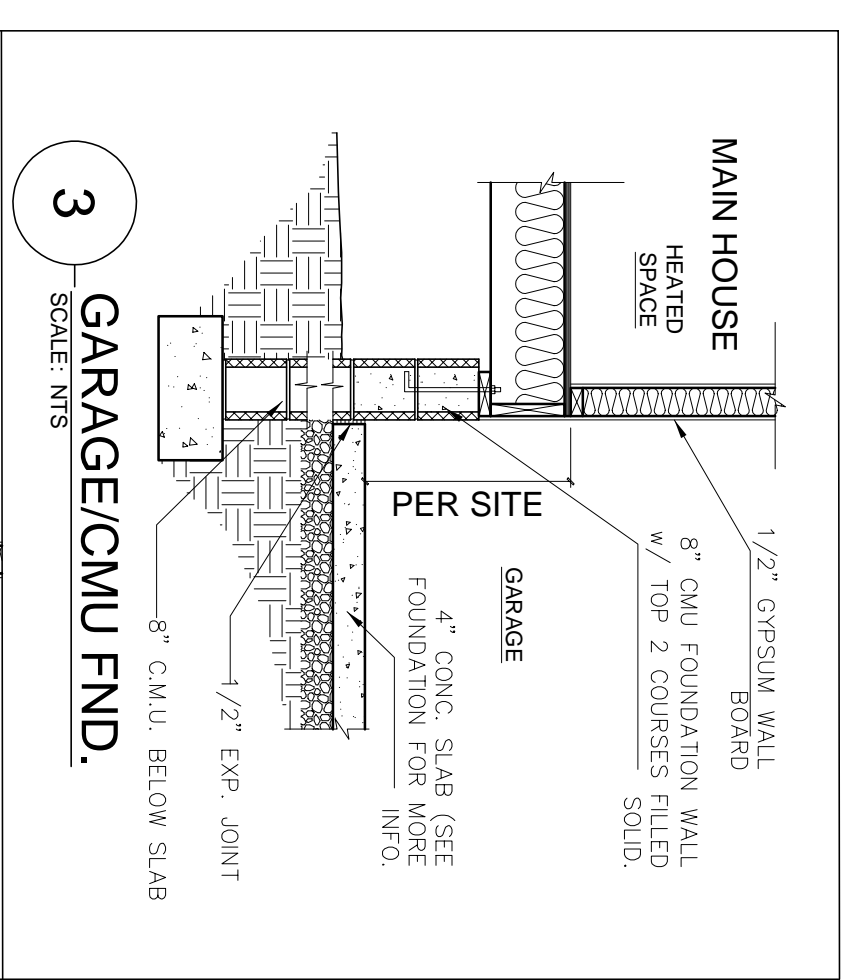


**HEADER SCHEDULE**

(A) (2) 2x10 FLUSH  
 (B) (2) 2x10 DROPPED  
 (C) (2) 2x8 FLUSH  
 (D) (2) 2x8 DROPPED

D.J. -DOUBLE JOIST  
 U.W. = UNDER WALL

NOTE: ■= INDICATES SIGNIFICANT POINT LOAD, BLOCK SOLID DOWN TO FOUNDATION, PIER, OR SUPPORT BEAM.



**CRAWL FOUNDATION/FIRST FLOOR FRAMING**

22X34 PRINTS SCALE: 1/4"=1'-0"  
 11X17 PRINTS SCALE: 1/8"=1'-0"

**OPT. SEALED CRAWLSPACE**  
 MECHANICAL VENTILATION REQUIREMENT:  
 MINIMUM OF 1 CFM PER 50 SQUARE FEET

**VENTILATION**  
**OPTIONAL SEALED CRAWL**  
 1,909 SQ. FT. / 50 = 39 CFM FAN

**CrawlSpace Vent Calculations**

A	Crawl Space Area	1309
B	Vent Area Required by Code (without vapor barrier)	12.7
C	Number of Vents Required	22.1
D	Number of Vents with Vapor Barrier Reduction	14.0
E	Formula:	
F	B = A / 150 (sqft. - net venting area per vent)	
G	E = D / 2	

NECES:  
 1. Builder must adjust ventilation calculations if using vents with a net area that is different than 0.47 sqft per vent.  
 2. Crawl space vents must be placed within 3 feet of each other.  
 3. Foundation vents must be placed to allow for cross ventilation.

GENERAL NOTES:  
 1. ALL DRAWINGS ARE TO BE COORDINATED WITH ALL SITE INFORMATION BY OWNER AND CONTRACTOR, AND APPLICABLE CODES.  
 2. CONTRACTOR IS TO NOTIFY DESIGNER IMMEDIATELY OF CONDITIONS OR ITEMS VARYING FROM DEPICTED INFORMATION.  
 3. GABRIEL DESIGN IS NOT RESPONSIBLE FOR CONSTRUCTED VARIATIONS FROM THE INFORMATION DEPICTED.

**Glenwood Builders**  
 New Home Plan  
 88 Florence Pines Lot 4  
 Fuquay Varina, NC - Permit Set

**gabriel design**  
 pwx architecture  
 raleigh, nc  
 email: gabereyesdesign@gmail.com  
 phone: (919) 491-5855

PROGRESS DATE: \_\_\_\_\_  
 ISSUE DATE: 04-14-20  
 DRAWN BY: GR  
 CHECKED BY: MW

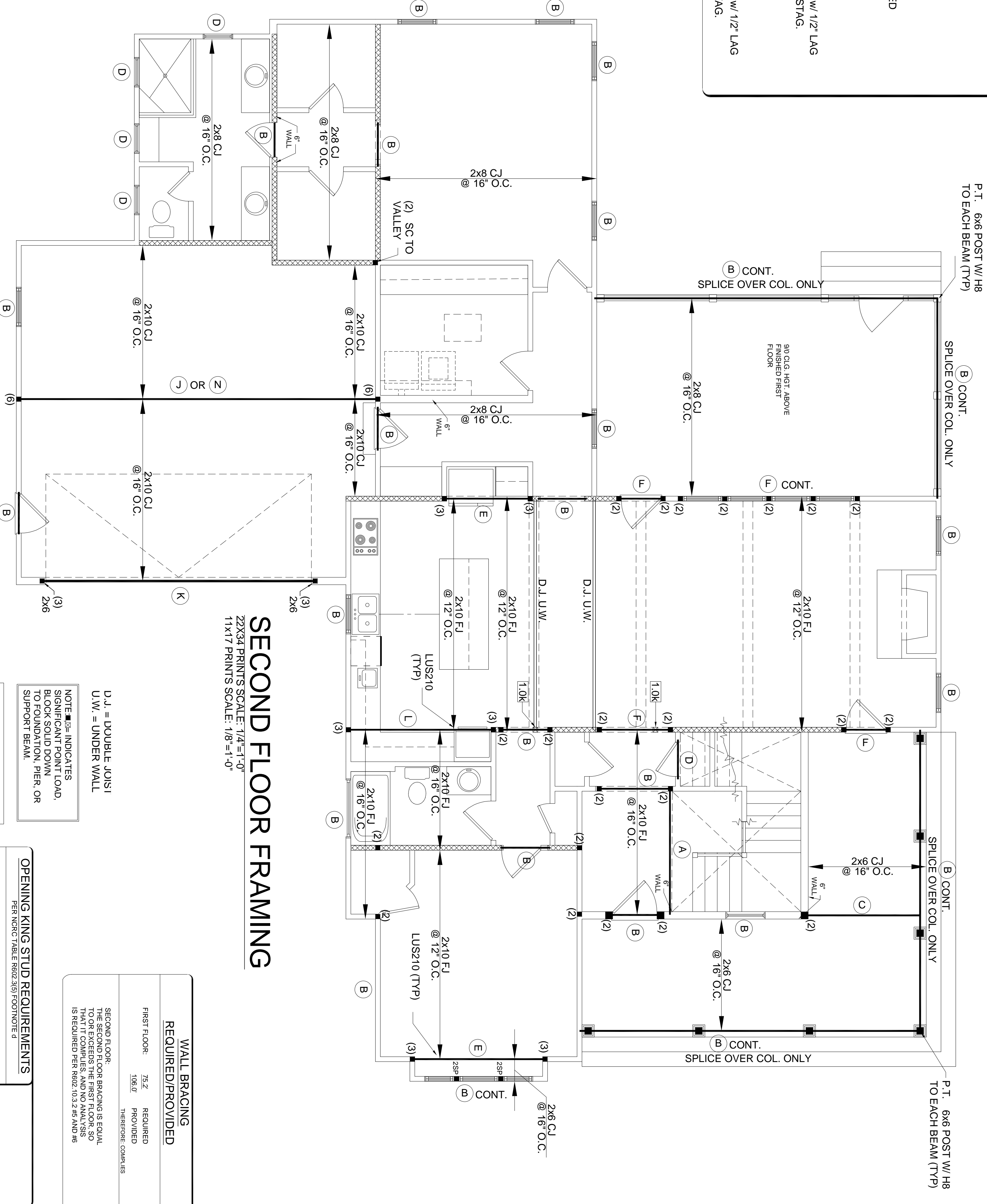
REVISIONS:  
 DATE BY: DESCRPT:

PLANNING NO. P-01220  
 SHEET NO. AS-1  
 Crawl Foundation & First Floor Framing



**HEADER SCHEDULE**

- (A) (2) 2X10 FLUSH
- (B) (2) 2X10 DROPPED
- (C) (2) 2X8 FLUSH
- (D) (2) 2X8 DROPPED
- (E) (2) 9 1/4" LVL FLUSH
- (F) (2) 9 1/4" LVL DROPPED
- (G) (3) 2X10 DROPPED
- (H) (2) 16" LVL
- (J) W/4x26, DROPPED
- (K) (3) 14" LVL DROPPED w/ 1/2" LAG SCREWS @ 18" O.C., STAG.
- (L) (3) 9 1/4" LVL FLUSH
- (M) (3) 2X10 DROPPED
- (N) (4) 18" LVL DROPPED w/ 1/2" LAG BOLTS @ 18" O.C., STAG.



**SECOND FLOOR FRAMING**  
 22X34 PRINTS SCALE: 1/4"=1'-0"  
 11X17 PRINTS SCALE: 1/8"=1'-0"

D.J. = DOUBLE JOIST  
 U.W. = UNDER WALL

NOTE: ■ INDICATES SIGNIFICANT POINT LOAD. BLOCK SOLID DOWN TO FOUNDATION, PIER OR SUPPORT BEAM.

WALL FRAMING: MIN. 2x4 SPF #2 @ 16" O.C., UNO  
 WALL SHEATHING: MIN. 1/2" APA RATED SHEATHING

ROOF SHEATHING: MIN. 3/8" APA RATED SHEATHING  
 RAISED WALL PANELS SHALL BE CONNECTED TO ROOF FRAMING PER R902.10.5.5

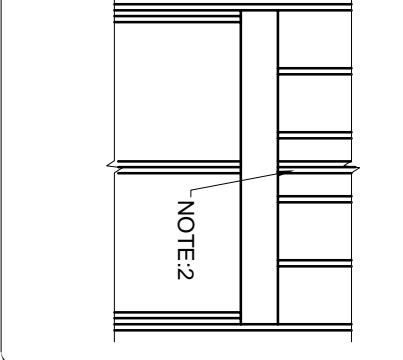
**OPENING KING STUD REQUIREMENTS**  
 PER NCRC TABLE R902.3(B) FOOTNOTE d

- HEADERS IN NON LOAD BEARING WALLS ARE NOT LABELED.
- KING STUDS EXTERIOR WALLS:
- SINGLE KING STUDS FOR 6'-0" MAX. OPENING
- TRIPLE KING STUDS FOR 14'-0" MAX. OPENING
- QUAD KING STUDS FOR 18'-0" MAX. OPENING.
- FOR 2x6 STUD WALLS, ON HALF THE AMOUNT OF KING STUDS REQUIRED (ROUND UP) UNO.
- APPLY TO DETAIL #4 SHEET P.4
- FOR WINDOW GROUPS DIVIDED BY STUD POCKETS, DOUBLE STUDS IN LINE WITH STUD POCKETS. END KING STUDS ARE THEN DETERMINED BY THIS CHART AS LAST OPENING ON EITHER SIDE.

**WALL BRACING**  
 REQUIRED/PROVIDED

FIRST FLOOR	75Z	REQUIRED
SECOND FLOOR	10B20	PROVIDED

THE SECOND FLOOR BRACING IS EQUAL TO OR EXCEEDS THE FIRST FLOOR, SO THE SECOND FLOOR BRACING IS NOT REQUIRED PER R902.10.3.2.45 AND R6. THEREFORE, COMPLIES



**STRUCTURAL NOTES** REC: 12/17/18

- Contractor assumes all responsibility for detailing from depicted or implied structural information. Contractor provided. Engineer must be notified immediately should structural construction or program error before reproduction, reworking, or use in any way. State referenced Code and local regulations.
- Only noted drawings with listed revisions are applicable for construction.
- Revisions shall be noted on drawings and shall be in compliance with the State referenced Code and local regulations.
- Revisions shall be noted on drawings and shall be in compliance with the State referenced Code and local regulations.

NO.	DATE	DESCRIPTION
1	12/17/18	ISSUED FOR PERMIT

**FOOTINGS AND FOUNDATION**

1. Concrete Footing: (1) 24" x 24" x 12" (2) 24" x 24" x 12" (3) 24" x 24" x 12" (4) 24" x 24" x 12" (5) 24" x 24" x 12" (6) 24" x 24" x 12" (7) 24" x 24" x 12" (8) 24" x 24" x 12" (9) 24" x 24" x 12" (10) 24" x 24" x 12" (11) 24" x 24" x 12" (12) 24" x 24" x 12" (13) 24" x 24" x 12" (14) 24" x 24" x 12" (15) 24" x 24" x 12" (16) 24" x 24" x 12" (17) 24" x 24" x 12" (18) 24" x 24" x 12" (19) 24" x 24" x 12" (20) 24" x 24" x 12" (21) 24" x 24" x 12" (22) 24" x 24" x 12" (23) 24" x 24" x 12" (24) 24" x 24" x 12" (25) 24" x 24" x 12" (26) 24" x 24" x 12" (27) 24" x 24" x 12" (28) 24" x 24" x 12" (29) 24" x 24" x 12" (30) 24" x 24" x 12" (31) 24" x 24" x 12" (32) 24" x 24" x 12" (33) 24" x 24" x 12" (34) 24" x 24" x 12" (35) 24" x 24" x 12" (36) 24" x 24" x 12" (37) 24" x 24" x 12" (38) 24" x 24" x 12" (39) 24" x 24" x 12" (40) 24" x 24" x 12" (41) 24" x 24" x 12" (42) 24" x 24" x 12" (43) 24" x 24" x 12" (44) 24" x 24" x 12" (45) 24" x 24" x 12" (46) 24" x 24" x 12" (47) 24" x 24" x 12" (48) 24" x 24" x 12" (49) 24" x 24" x 12" (50) 24" x 24" x 12" (51) 24" x 24" x 12" (52) 24" x 24" x 12" (53) 24" x 24" x 12" (54) 24" x 24" x 12" (55) 24" x 24" x 12" (56) 24" x 24" x 12" (57) 24" x 24" x 12" (58) 24" x 24" x 12" (59) 24" x 24" x 12" (60) 24" x 24" x 12" (61) 24" x 24" x 12" (62) 24" x 24" x 12" (63) 24" x 24" x 12" (64) 24" x 24" x 12" (65) 24" x 24" x 12" (66) 24" x 24" x 12" (67) 24" x 24" x 12" (68) 24" x 24" x 12" (69) 24" x 24" x 12" (70) 24" x 24" x 12" (71) 24" x 24" x 12" (72) 24" x 24" x 12" (73) 24" x 24" x 12" (74) 24" x 24" x 12" (75) 24" x 24" x 12" (76) 24" x 24" x 12" (77) 24" x 24" x 12" (78) 24" x 24" x 12" (79) 24" x 24" x 12" (80) 24" x 24" x 12" (81) 24" x 24" x 12" (82) 24" x 24" x 12" (83) 24" x 24" x 12" (84) 24" x 24" x 12" (85) 24" x 24" x 12" (86) 24" x 24" x 12" (87) 24" x 24" x 12" (88) 24" x 24" x 12" (89) 24" x 24" x 12" (90) 24" x 24" x 12" (91) 24" x 24" x 12" (92) 24" x 24" x 12" (93) 24" x 24" x 12" (94) 24" x 24" x 12" (95) 24" x 24" x 12" (96) 24" x 24" x 12" (97) 24" x 24" x 12" (98) 24" x 24" x 12" (99) 24" x 24" x 12" (100) 24" x 24" x 12" (101) 24" x 24" x 12" (102) 24" x 24" x 12" (103) 24" x 24" x 12" (104) 24" x 24" x 12" (105) 24" x 24" x 12" (106) 24" x 24" x 12" (107) 24" x 24" x 12" (108) 24" x 24" x 12" (109) 24" x 24" x 12" (110) 24" x 24" x 12" (111) 24" x 24" x 12" (112) 24" x 24" x 12" (113) 24" x 24" x 12" (114) 24" x 24" x 12" (115) 24" x 24" x 12" (116) 24" x 24" x 12" (117) 24" x 24" x 12" (118) 24" x 24" x 12" (119) 24" x 24" x 12" (120) 24" x 24" x 12" (121) 24" x 24" x 12" (122) 24" x 24" x 12" (123) 24" x 24" x 12" (124) 24" x 24" x 12" (125) 24" x 24" x 12" (126) 24" x 24" x 12" (127) 24" x 24" x 12" (128) 24" x 24" x 12" (129) 24" x 24" x 12" (130) 24" x 24" x 12" (131) 24" x 24" x 12" (132) 24" x 24" x 12" (133) 24" x 24" x 12" (134) 24" x 24" x 12" (135) 24" x 24" x 12" (136) 24" x 24" x 12" (137) 24" x 24" x 12" (138) 24" x 24" x 12" (139) 24" x 24" x 12" (140) 24" x 24" x 12" (141) 24" x 24" x 12" (142) 24" x 24" x 12" (143) 24" x 24" x 12" (144) 24" x 24" x 12" (145) 24" x 24" x 12" (146) 24" x 24" x 12" (147) 24" x 24" x 12" (148) 24" x 24" x 12" (149) 24" x 24" x 12" (150) 24" x 24" x 12" (151) 24" x 24" x 12" (152) 24" x 24" x 12" (153) 24" x 24" x 12" (154) 24" x 24" x 12" (155) 24" x 24" x 12" (156) 24" x 24" x 12" (157) 24" x 24" x 12" (158) 24" x 24" x 12" (159) 24" x 24" x 12" (160) 24" x 24" x 12" (161) 24" x 24" x 12" (162) 24" x 24" x 12" (163) 24" x 24" x 12" (164) 24" x 24" x 12" (165) 24" x 24" x 12" (166) 24" x 24" x 12" (167) 24" x 24" x 12" (168) 24" x 24" x 12" (169) 24" x 24" x 12" (170) 24" x 24" x 12" (171) 24" x 24" x 12" (172) 24" x 24" x 12" (173) 24" x 24" x 12" (174) 24" x 24" x 12" (175) 24" x 24" x 12" (176) 24" x 24" x 12" (177) 24" x 24" x 12" (178) 24" x 24" x 12" (179) 24" x 24" x 12" (180) 24" x 24" x 12" (181) 24" x 24" x 12" (182) 24" x 24" x 12" (183) 24" x 24" x 12" (184) 24" x 24" x 12" (185) 24" x 24" x 12" (186) 24" x 24" x 12" (187) 24" x 24" x 12" (188) 24" x 24" x 12" (189) 24" x 24" x 12" (190) 24" x 24" x 12" (191) 24" x 24" x 12" (192) 24" x 24" x 12" (193) 24" x 24" x 12" (194) 24" x 24" x 12" (195) 24" x 24" x 12" (196) 24" x 24" x 12" (197) 24" x 24" x 12" (198) 24" x 24" x 12" (199) 24" x 24" x 12" (200) 24" x 24" x 12" (201) 24" x 24" x 12" (202) 24" x 24" x 12" (203) 24" x 24" x 12" (204) 24" x 24" x 12" (205) 24" x 24" x 12" (206) 24" x 24" x 12" (207) 24" x 24" x 12" (208) 24" x 24" x 12" (209) 24" x 24" x 12" (210) 24" x 24" x 12" (211) 24" x 24" x 12" (212) 24" x 24" x 12" (213) 24" x 24" x 12" (214) 24" x 24" x 12" (215) 24" x 24" x 12" (216) 24" x 24" x 12" (217) 24" x 24" x 12" (218) 24" x 24" x 12" (219) 24" x 24" x 12" (220) 24" x 24" x 12" (221) 24" x 24" x 12" (222) 24" x 24" x 12" (223) 24" x 24" x 12" (224) 24" x 24" x 12" (225) 24" x 24" x 12" (226) 24" x 24" x 12" (227) 24" x 24" x 12" (228) 24" x 24" x 12" (229) 24" x 24" x 12" (230) 24" x 24" x 12" (231) 24" x 24" x 12" (232) 24" x 24" x 12" (233) 24" x 24" x 12" (234) 24" x 24" x 12" (235) 24" x 24" x 12" (236) 24" x 24" x 12" (237) 24" x 24" x 12" (238) 24" x 24" x 12" (239) 24" x 24" x 12" (240) 24" x 24" x 12" (241) 24" x 24" x 12" (242) 24" x 24" x 12" (243) 24" x 24" x 12" (244) 24" x 24" x 12" (245) 24" x 24" x 12" (246) 24" x 24" x 12" (247) 24" x 24" x 12" (248) 24" x 24" x 12" (249) 24" x 24" x 12" (250) 24" x 24" x 12" (251) 24" x 24" x 12" (252) 24" x 24" x 12" (253) 24" x 24" x 12" (254) 24" x 24" x 12" (255) 24" x 24" x 12" (256) 24" x 24" x 12" (257) 24" x 24" x 12" (258) 24" x 24" x 12" (259) 24" x 24" x 12" (260) 24" x 24" x 12" (261) 24" x 24" x 12" (262) 24" x 24" x 12" (263) 24" x 24" x 12" (264) 24" x 24" x 12" (265) 24" x 24" x 12" (266) 24" x 24" x 12" (267) 24" x 24" x 12" (268) 24" x 24" x 12" (269) 24" x 24" x 12" (270) 24" x 24" x 12" (271) 24" x 24" x 12" (272) 24" x 24" x 12" (273) 24" x 24" x 12" (274) 24" x 24" x 12" (275) 24" x 24" x 12" (276) 24" x 24" x 12" (277) 24" x 24" x 12" (278) 24" x 24" x 12" (279) 24" x 24" x 12" (280) 24" x 24" x 12" (281) 24" x 24" x 12" (282) 24" x 24" x 12" (283) 24" x 24" x 12" (284) 24" x 24" x 12" (285) 24" x 24" x 12" (286) 24" x 24" x 12" (287) 24" x 24" x 12" (288) 24" x 24" x 12" (289) 24" x 24" x 12" (290) 24" x 24" x 12" (291) 24" x 24" x 12" (292) 24" x 24" x 12" (293) 24" x 24" x 12" (294) 24" x 24" x 12" (295) 24" x 24" x 12" (296) 24" x 24" x 12" (297) 24" x 24" x 12" (298) 24" x 24" x 12" (299) 24" x 24" x 12" (300) 24" x 24" x 12" (301) 24" x 24" x 12" (302) 24" x 24" x 12" (303) 24" x 24" x 12" (304) 24" x 24" x 12" (305) 24" x 24" x 12" (306) 24" x 24" x 12" (307) 24" x 24" x 12" (308) 24" x 24" x 12" (309) 24" x 24" x 12" (310) 24" x 24" x 12" (311) 24" x 24" x 12" (312) 24" x 24" x 12" (313) 24" x 24" x 12" (314) 24" x 24" x 12" (315) 24" x 24" x 12" (316) 24" x 24" x 12" (317) 24" x 24" x 12" (318) 24" x 24" x 12" (319) 24" x 24" x 12" (320) 24" x 24" x 12" (321) 24" x 24" x 12" (322) 24" x 24" x 12" (323) 24" x 24" x 12" (324) 24" x 24" x 12" (325) 24" x 24" x 12" (326) 24" x 24" x 12" (327) 24" x 24" x 12" (328) 24" x 24" x 12" (329) 24" x 24" x 12" (330) 24" x 24" x 12" (331) 24" x 24" x 12" (332) 24" x 24" x 12" (333) 24" x 24" x 12" (334) 24" x 24" x 12" (335) 24" x 24" x 12" (336) 24" x 24" x 12" (337) 24" x 24" x 12" (338) 24" x 24" x 12" (339) 24" x 24" x 12" (340) 24" x 24" x 12" (341) 24" x 24" x 12" (342) 24" x 24" x 12" (343) 24" x 24" x 12" (344) 24" x 24" x 12" (345) 24" x 24" x 12" (346) 24" x 24" x 12" (347) 24" x 24" x 12" (348) 24" x 24" x 12" (349) 24" x 24" x 12" (350) 24" x 24" x 12" (351) 24" x 24" x 12" (352) 24" x 24" x 12" (353) 24" x 24" x 12" (354) 24" x 24" x 12" (355) 24" x 24" x 12" (356) 24" x 24" x 12" (357) 24" x 24" x 12" (358) 24" x 24" x 12" (359) 24" x 24" x 12" (360) 24" x 24" x 12" (361) 24" x 24" x 12" (362) 24" x 24" x 12" (363) 24" x 24" x 12" (364) 24" x 24" x 12" (365) 24" x 24" x 12" (366) 24" x 24" x 12" (367) 24" x 24" x 12" (368) 24" x 24" x 12" (369) 24" x 24" x 12" (370) 24" x 24" x 12" (371) 24" x 24" x 12" (372) 24" x 24" x 12" (373) 24" x 24" x 12" (374) 24" x 24" x 12" (375) 24" x 24" x 12" (376) 24" x 24" x 12" (377) 24" x 24" x 12" (378) 24" x 24" x 12" (379) 24" x 24" x 12" (380) 24" x 24" x 12" (381) 24" x 24" x 12" (382) 24" x 24" x 12" (383) 24" x 24" x 12" (384) 24" x 24" x 12" (385) 24" x 24" x 12" (386) 24" x 24" x 12" (387) 24" x 24" x 12" (388) 24" x 24" x 12" (389) 24" x 24" x 12" (390) 24" x 24" x 12" (391) 24" x 24" x 12" (392) 24" x 24" x 12" (393) 24" x 24" x 12" (394) 24" x 24" x 12" (395) 24" x 24" x 12" (396) 24" x 24" x 12" (397) 24" x 24" x 12" (398) 24" x 24" x 12" (399) 24" x 24" x 12" (400) 24" x 24" x 12" (401) 24" x 24" x 12" (402) 24" x 24" x 12" (403) 24" x 24" x 12" (404) 24" x 24" x 12" (405) 24" x 24" x 12" (406) 24" x 24" x 12" (407) 24" x 24" x 12" (408) 24" x 24" x 12" (409) 24" x 24" x 12" (410) 24" x 24" x 12" (411) 24" x 24" x 12" (412) 24" x 24" x 12" (413) 24" x 24" x 12" (414) 24" x 24" x 12" (415) 24" x 24" x 12" (416) 24" x 24" x 12" (417) 24" x 24" x 12" (418) 24" x 24" x 12" (419) 24" x 24" x 12" (420) 24" x 24" x 12" (421) 24" x 24" x 12" (422) 24" x 24" x 12" (423) 24" x 24" x 12" (424) 24" x 24" x 12" (425) 24" x 24" x 12" (426) 24" x 24" x 12" (427) 24" x 24" x 12" (428) 24" x 24" x 12" (429) 24" x 24" x 12" (430) 24" x 24" x 12" (431) 24" x 24" x 12" (432) 24" x 24" x 12" (433) 24" x 24" x 12" (434) 24" x 24" x 12" (435) 24" x 24" x 12" (436) 24" x 24" x 12" (437) 24" x 24" x 12" (438) 24" x 24" x 12" (439) 24" x 24" x 12" (440) 24" x 24" x 12" (441) 24" x 24" x 12" (442) 24" x 24" x 12" (443) 24" x 24" x 12" (444) 24" x 24" x 12" (445) 24" x 24" x 12" (446) 24" x 24" x 12" (447) 24" x 24" x 12" (448) 24" x 24" x 12" (449) 24" x 24" x 12" (450) 24" x 24" x 12" (451) 24" x 24" x 12" (452) 24" x 24" x 12" (453) 24" x 24" x 12" (454) 24" x 24" x 12" (455) 24" x 24" x 12" (456) 24" x 24" x 12" (457) 24" x 24" x 12" (458) 24" x 24" x 12" (459) 24" x 24" x 12" (460) 24" x 24" x 12" (461) 24" x 24" x 12" (462) 24" x 24" x 12" (463) 24" x 24" x 12" (464) 24" x 24" x 12" (465) 24" x 24" x 12" (466) 24" x 24" x 12" (467) 24" x 24" x 12" (468) 24" x 24" x 12" (469) 24" x 24" x 12" (470) 24" x 24" x 12" (471) 24" x 24" x 12" (472) 24" x 24" x 12" (473) 24" x 24" x 12" (474) 24" x 24" x 12" (475) 24" x 24" x 12" (476) 24" x 24" x 12" (477) 24" x 24" x 12" (478) 24" x 24" x 12" (479) 24" x 24" x 12" (480) 24" x 24" x 12" (481) 24" x 24" x 12" (482) 24" x 24" x 12" (483) 24" x 24" x 12" (484) 24" x 24" x 12" (485) 24" x 24" x 12" (486) 24" x 24" x 12" (487) 24" x 24" x 12" (488) 24" x 24" x 12" (489) 24" x 24" x 12" (490) 24" x 24" x 12" (491) 24" x 24" x 12" (492) 24" x 24" x 12" (493) 24" x 24" x 12" (494) 24" x 24" x 12" (495) 24" x 24" x 12" (496) 24" x 24" x 12" (497) 24" x 24" x 12" (498) 24" x 24" x 12" (499) 24" x 24" x 12" (500) 24" x 24" x 12" (501) 24" x 24" x 12" (502) 24" x 24" x 12" (503) 24" x 24" x 12" (504) 24" x 24" x 12" (505) 24" x 24" x 12" (506) 24" x 24" x 12" (507) 24" x 24" x 12" (508) 24" x 24" x 12" (509) 24" x 24" x 12" (510) 24" x 24" x 12" (511) 24" x 24" x 12" (512) 24" x 24" x 12" (513) 24" x 24" x 12" (514) 24" x 24" x 12" (515) 24" x 24" x 12" (516) 24" x 24" x 12" (517) 24" x 24" x 12" (518) 24" x 24" x 12" (519) 24" x 24" x 12" (520) 24" x 24" x 12" (521) 24" x 24" x 12" (522) 24" x 24" x 12" (523) 24" x 24" x 12" (524) 24" x 24" x 12" (525) 24" x 24" x 12" (526) 24" x 24" x 12" (527) 24" x 24" x 12" (528) 24" x 24" x 12" (529) 24" x 24" x 12" (530) 24" x 24" x 12" (531) 24" x 24" x 12" (532) 24" x 24" x 12" (533) 24" x 24" x 12" (534) 24" x 24" x 12" (535) 24" x 24" x 12" (536) 24" x 24" x 12" (537) 24" x 24" x 12" (538) 24" x 24" x 12" (539) 24" x 24" x 12" (540) 24" x 24" x 12" (541) 24" x 24" x 12" (542) 24" x 24" x 12" (543) 24" x 24" x 12" (544) 24" x 24" x 12" (545) 24" x 24" x 12" (546) 24" x 24" x 12" (547) 24" x 24" x 12" (548) 24" x 24" x 12" (549) 24" x 24" x 12" (550) 24" x 24" x 12" (551) 24" x 24" x 12" (552) 24" x 24" x 12" (553) 24" x 24" x 12" (554) 24" x 24" x 12" (555) 24" x 24" x 12" (556) 24" x 24" x 12" (557) 24" x 24" x 12" (558) 24" x 24" x 12" (559) 24" x 24" x 12" (560) 24" x 24" x 12" (561) 24" x 24" x 12" (562) 24" x 24" x 12" (563) 24" x 24" x 12" (564) 24" x 24" x 12" (565) 24" x 24" x 12" (566) 24" x 24" x 12" (567) 24" x 24" x 12" (568) 24" x 24" x 12" (569) 24" x 2











