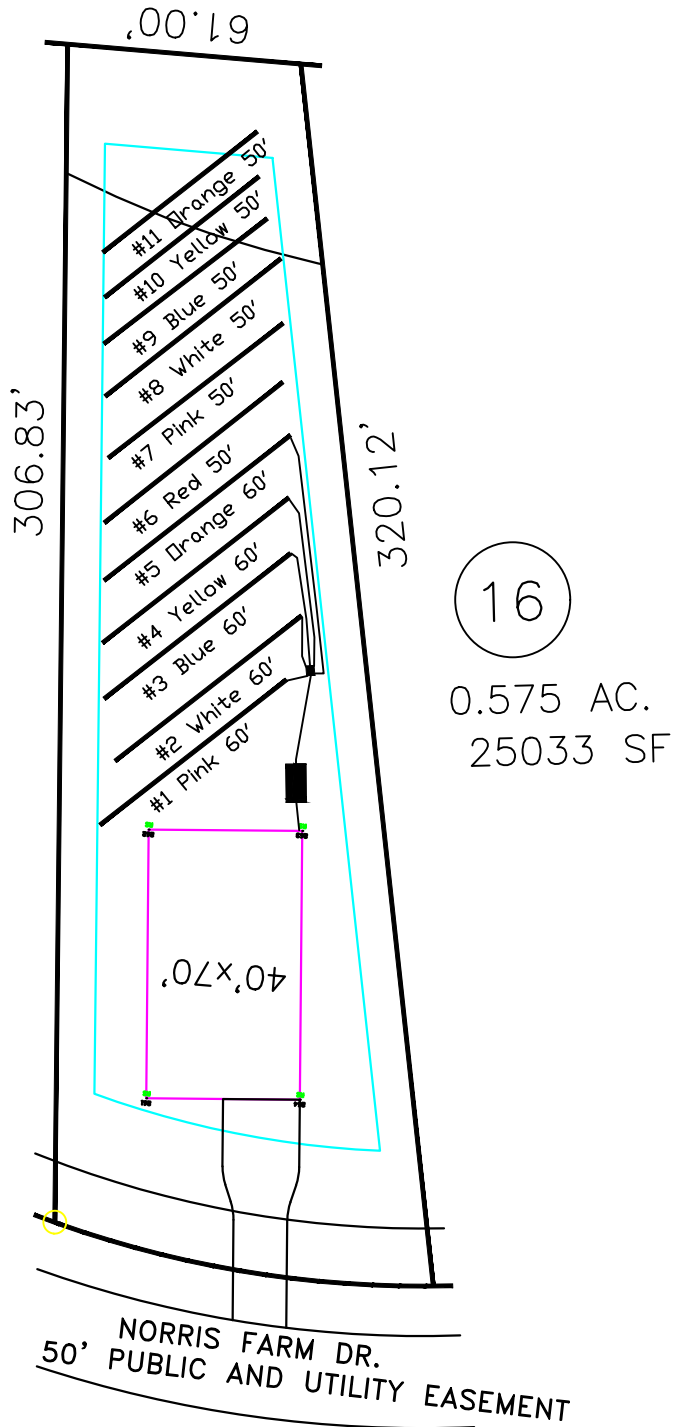


Norris Farm 4-Bedroom Septic Proposal Lot #16



16

0.575 AC.
25033 SF

System: Gravity to D-Box
Lines: 1-5 (300')
0.4 LTAR
24" Trench Bottom
Accepted Status System
Repair: Pressure Manifold
Lines: 6-11 (300')
0.4 LTAR
24" Trench Bottom
Accepted Status System

GRAPHIC SCALE
1" = 50'



Adams
Soil Consulting
919-414-6761
Job #574