

Avery Pond
Lot #124

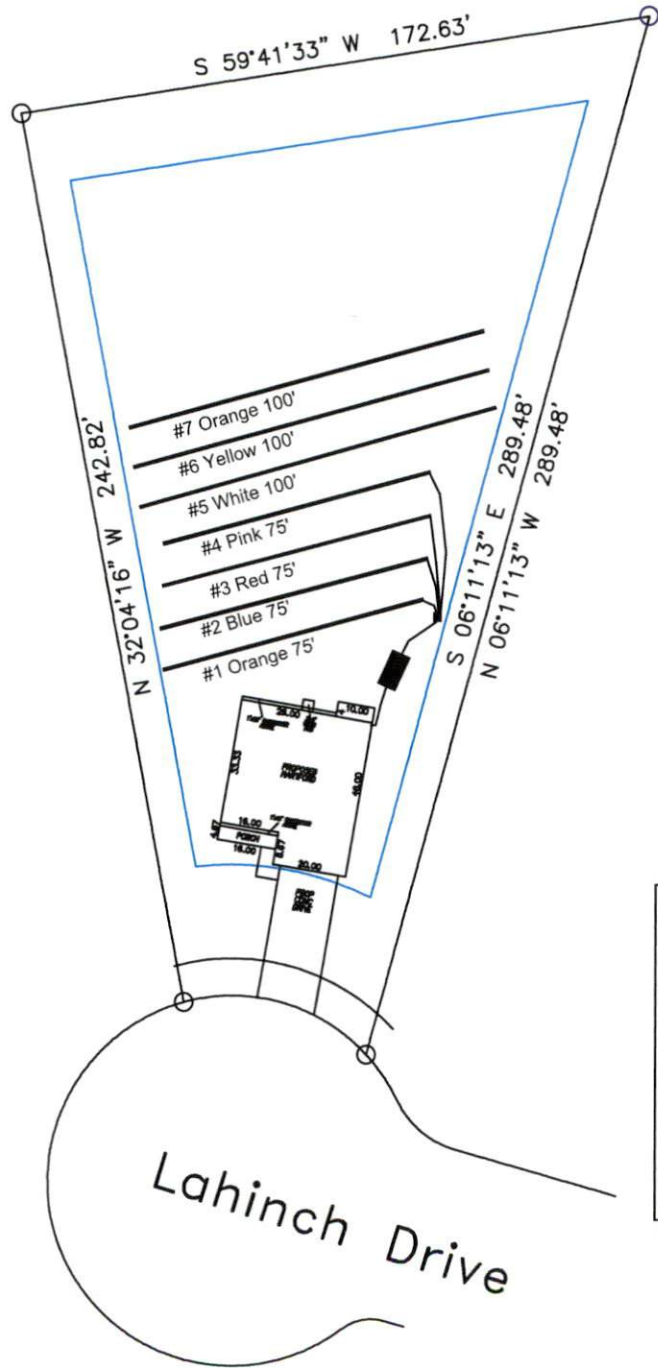
4-Bedroom Home (480 gal./day)

| <u>LINE #</u> | <u>COLOR</u> | <u>BS</u> | <u>HI</u> | <u>FS</u> | <u>ELEVATION</u> | <u>LINE LENGTH</u> | <u>Design Length</u> |
|---------------|--------------|-----------|-----------|-----------|------------------|--------------------|----------------------|
| TBM | | 2.0 | | 100.0 | | <u>in field</u> | <u>installation</u> |
| INST. 1 | | | 102.0 | | | | |
| 1 | Orange | | | 4.2 | 97.8 | 80 | 75 |
| 2 | Blue | | | 4.6 | 97.4 | 80 | 75 |
| 3 | Red | | | 5.1 | 96.9 | 80 | 75 |
| 4 | Pink | | | 5.6 | 96.4 | 80 | 75 |
| 5 | White | | | 6.1 | 95.9 | 100 | 100 |
| 6 | Yellow | | | 6.6 | 95.4 | 100 | 100 |
| 7 | Orange | | | 7.2 | 94.8 | 100 | 100 |
| 8 | Blue | | | 7.7 | 94.3 | 125 | not used |
| 9 | Red | | | 8.3 | 93.7 | 125 | not used |

Total

| | <u>System</u> | <u>Repair</u> |
|-------------------------------|-----------------------------------|-----------------------------------|
| | Lines 1-4 | Lines 5-7 |
| System Type | Accepted Status System EZ-FLOW | Accepted Status System EZ-FLOW |
| Suggested Soil LTAR | 0.40 | 0.40 |
| Total Line Length | 300 | 300 |
| Square Footage | 900 | 900 |
| Proposed Trench Bottom | 24" | 24" |
| Distribution Method | Gravity to D-Box | Gravity to D-Box |

Avery Pond 4-Bedroom Septic Proposal Lot #124



124

System: Gravity D-Box
 Lines: 1-4 (300')
 0.4 LTAR
 24" Trench Bottom
 Accepted Status System
 Repair: Gravity to D-Box
 Lines: 5-7 (300')
 0.4 LTAR
 18-24" Trench Bottom
 Accepted Status System

Lahinch Drive

GRAPHIC SCALE
1" = 50'



Adams
 Soil Consulting
 919-414-6761
 Job #708