

Avery Pond

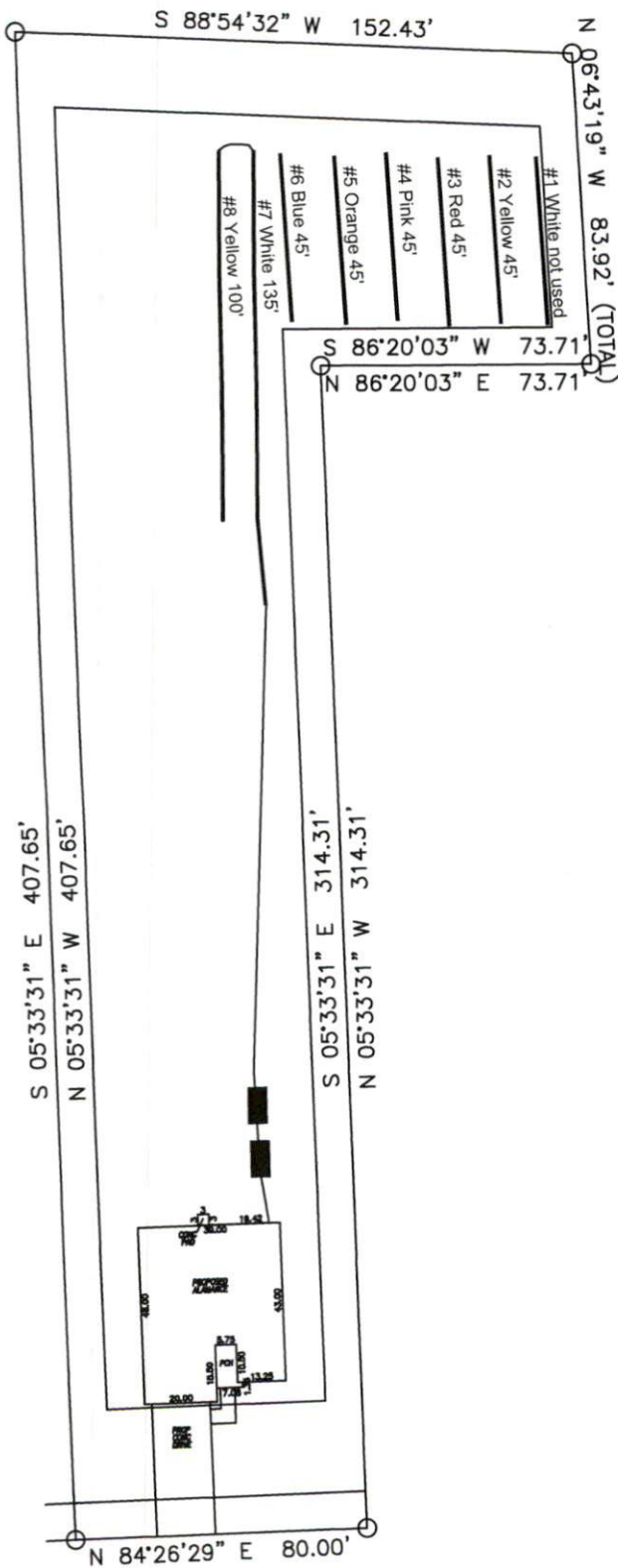
Lot #127

3-Bedroom Home (360 gal./day)

<u>LINE #</u>	<u>COLOR</u>	<u>BS</u>	<u>HI</u>	<u>FS</u>	<u>ELEVATION</u>	<u>LINE LENGTH</u>	<u>Design Length</u>
TBM		2.0		100.0		<u>in field</u>	<u>installation</u>
INST. 1			102.0				
1	White			2.6	99.4	45	not used
2	Yellow			3.4	98.6	45	45
3	Red			4.1	97.9	45	45
4	Pink			4.7	97.3	45	45
5	Orange			5.1	96.9	45	45
6	Blue			5.6	96.4	45	45
7	White			6.3	95.7	135	135
8	Yellow			6.8	95.2	108	100
Total							

	<u>System</u>	<u>Repair</u>
	Lines 7-8	Lines 2-6
System Type	Accepted Status System	Accepted Status System
	EZ-FLOW	EZ-FLOW
Suggested Soil LTAR	0.400	0.400
Total Line Length	235	225
Square Footage	705	675
Proposed Trench Bottom	24"	24"
Distribution Method	Pump to Serial Distribution	Pump to Serial Distribution

Avery Pond 3-Bedroom Septic Proposal Lot #127



System: Pump to Serial Dist.
 Lines: 7-8 (235')
 0.4 LTAR
 18" Trench Bottom
 Accepted Status System
 Repair: Pump to Serial Dist.
 Lines: 2-6 (225')
 0.4 LTAR
 24" Trench Bottom
 Accepted Status System

Lahinch Drive

GRAPHIC SCALE
 1" = 50'



Adams
 Soil Consulting
 919-414-6761
 Job #708