

Avery Pond

Lot #126

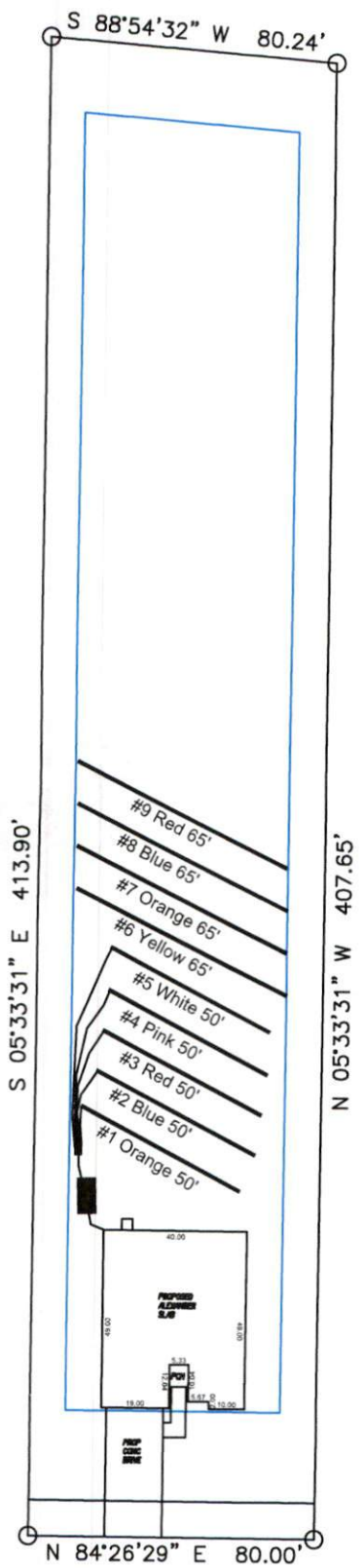
3-Bedroom Home (360 gal./day)

<u>LINE #</u>	<u>COLOR</u>	<u>BS</u>	<u>HI</u>	<u>FS</u>	<u>ELEVATION</u>	<u>LINE LENGTH</u>	<u>Design Length</u>
TBM		2.0		100.0		<u>in field</u>	<u>installation</u>
INST. 1			102.0				
1	Orange			2.6	99.4	65	50
2	Blue			3.4	98.6	65	50
3	Red			4.1	97.9	65	50
4	Pink			4.7	97.3	65	50
5	White			5.1	96.9	65	50
6	Yellow			5.6	96.4	65	65
7	Orange			6.3	95.7	65	65
8	Blue			6.8	95.2	65	65
9	Red			7.4	94.6	65	65

Total

	<u>System</u>	<u>Repair</u>
	Lines 1-5	Lines 6-10
System Type	Accepted Status System	Accepted Status System
	EZ-FLOW	EZ-FLOW
Suggested Soil LTAR	0.375	0.350
Total Line Length	250	260
Square Footage	750	780
Proposed Trench Bottom	24"	24"
Distribution Method	Gravity to D-Box	Gravity to D-Box

Avery Pond 3-Bedroom Septic Proposal Lot #126



Lahinch Drive

System: Gravity D-Box
 Lines: 1-5 (250')
 0.375 LTAR
 24" Trench Bottom
 Accepted Status System
 Repair: Gravity to D-Box
 Lines: 6-9 (260')
 0.35 LTAR
 18-24" Trench Bottom
 Accepted Status System

GRAPHIC SCALE
 1" = 50'



Adams
 Soil Consulting
 919-414-6761
 Job #708