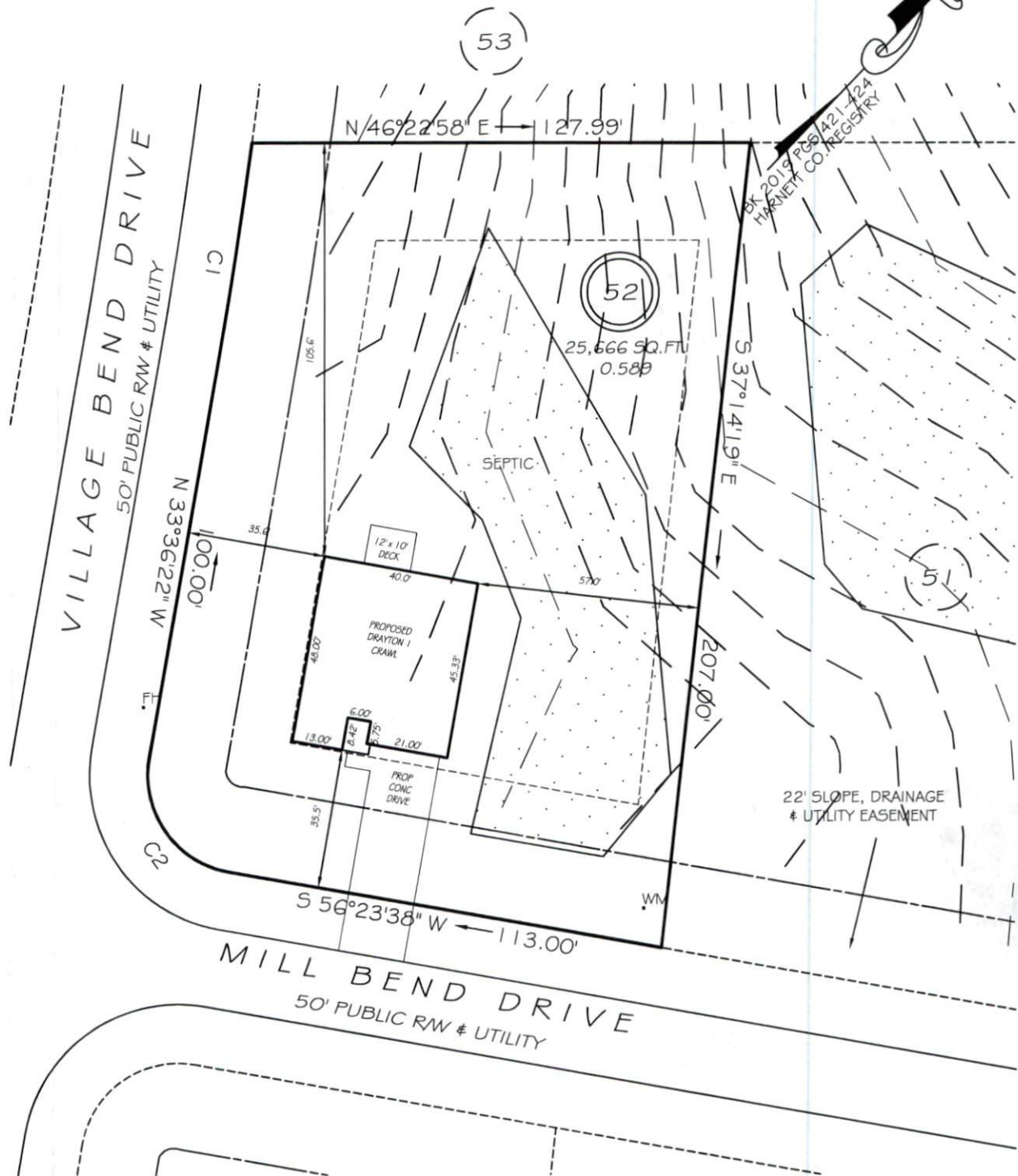


I, MICHAEL P. GRIFFIN, certify that under my direction and supervision this map was drawn from an actual field survey; that the error of closure of the survey as calculated by coordinates is 1: 10,000+; that the area shown hereon was calculated by coordinates.

Witness my hand and seal this day of MONTH 2020.



IMPERVIOUS AREAS

HOUSE	1,866 SQ. FT.
DRIVE & WALKS	678 SQ. FT.
PATIO	000 SQ. FT.
TOTAL	2,544 SQ. FT.
ALLOWED	2,945 SQ. FT.

REVISION: MOVE SEPTIC PER BUILDER 5/19/20
 REVISION: NEW PLANS 5/18/20

SETBACKS

FRONT	35'
REAR	25'
SIDE	10'
CORNER SIDE	20'

C1 R=1525.00' L=59.35' N34°43'15"W 59.35'
 C2 R=25.00' L=39.27' S78°36'22"E 35.36'

LEGEND

EIP	EXISTING IRON PIPE	FES	FLARED END SECTION
IPS	IRON PIPE SET	WM	WATER METER
RW	RIGHT OF WAY	CO	CLEAN OUT
NF	NOW OR FORMERLY	FH	FIRE HYDRANT
EIS	EXISTING IRON STAKE	CB	CATCH BASIN

PRELIMINARY
 NOT FOR RECORDATION,
 SALES OR CONVEYANCE

