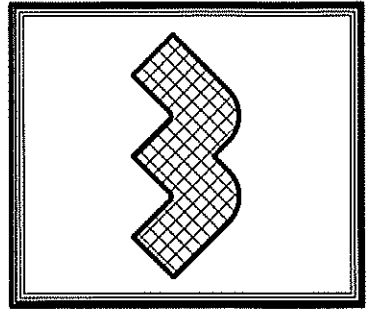


THIS PLAN IS DESIGNED TO MEET THE REQUIREMENTS OF THE NORTH CAROLINA RESIDENTIAL CODE 2012 EDITION

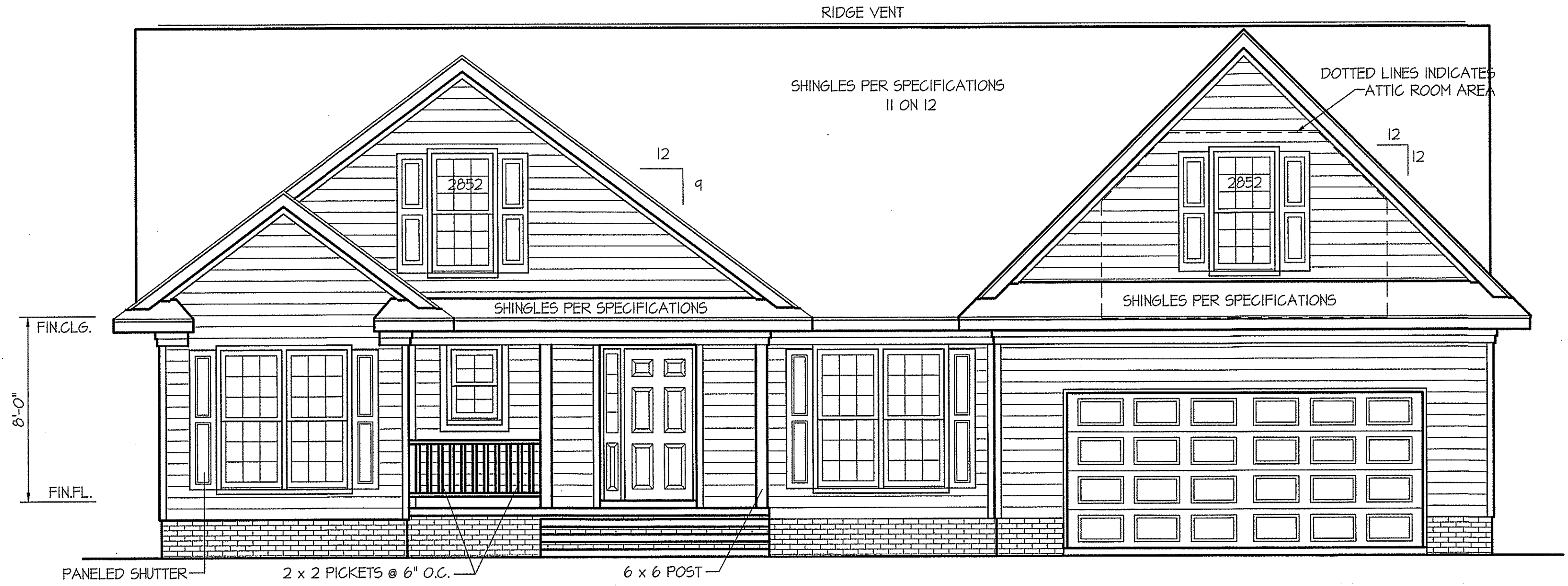
DATE:
MARCH - 2018

WELLONS HOMES
P.O. BOX 730
DUNN, N.C. - 28335
O: (910) 892-3123 FAX: (910) 892-5032
© 2018, WELLONS HOMES



EXCLUSIVE PLAN FOR
WELLONS HOMES
WATERFORD COLLECTION SERIES
HUNTINGTON - A
REVERSED

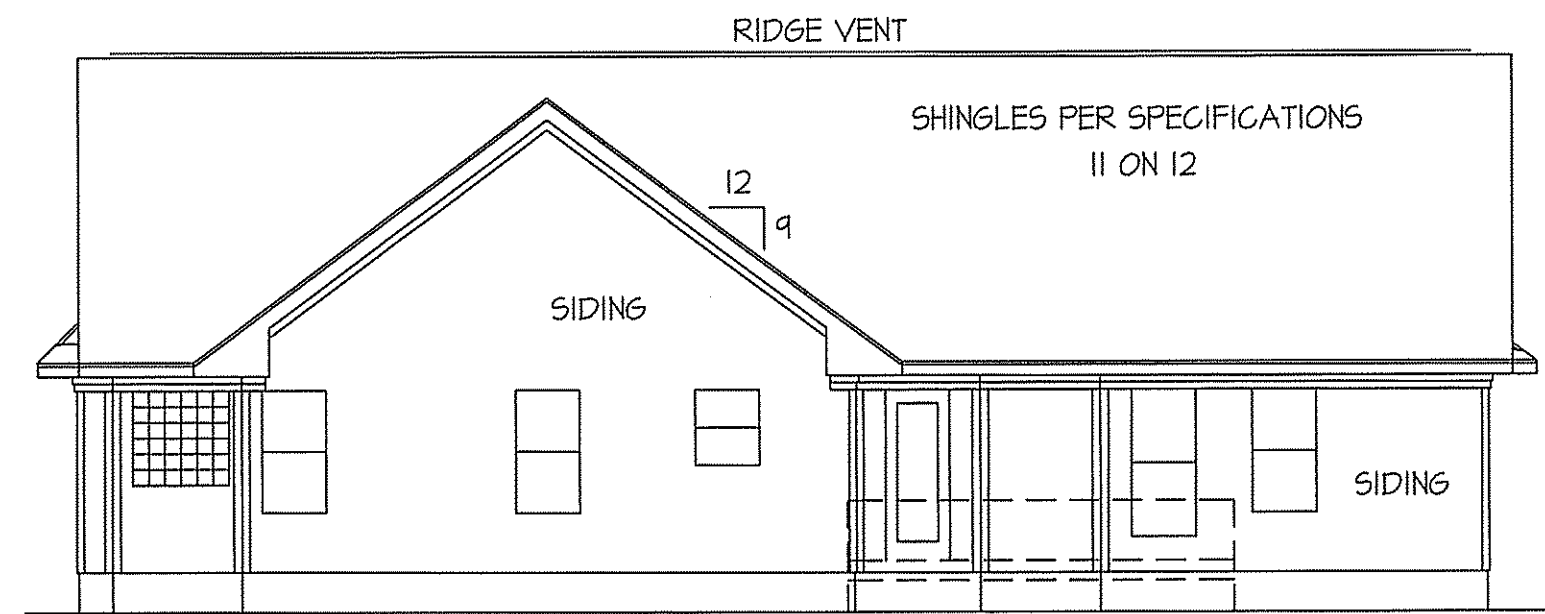
SHEET NO.
1



FRONT ELEVATION
SCALE: 1/4" = 1'-0"

INSULATION and FENESTRATION REQUIREMENTS		
CLIMATE ZONE	ZONE-3	ZONE-4
FENESTRATION U-FACTOR	0.35	0.35
GLAZED FENESTRATION SHGC	0.30	0.30
MINIMUM CEILING R-VALUE	R-30	R-38
MINIMUM WALL R-VALUE	R-13	R-15, 13+25
MINIMUM FLOOR R-VALUE	R-14	R-14
MIN. CRAWL SPACE WALL R-VALUE	5/10	10/13
MIN. SLAB R-VALUE	0	R-10

PROVIDE STEPS AS REQUIRED
GRADE MAY VARY - BUILDER TO VERIFY

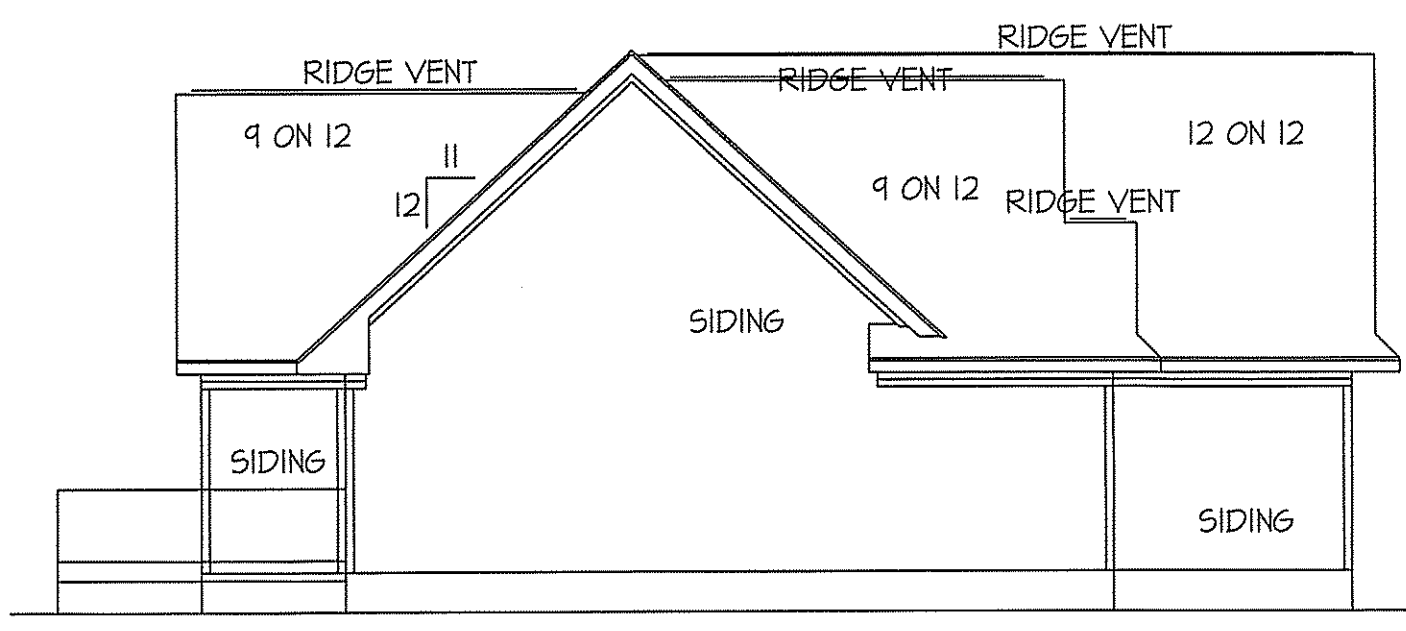


REAR ELEVATION
SCALE: 1/8" = 1'-0"

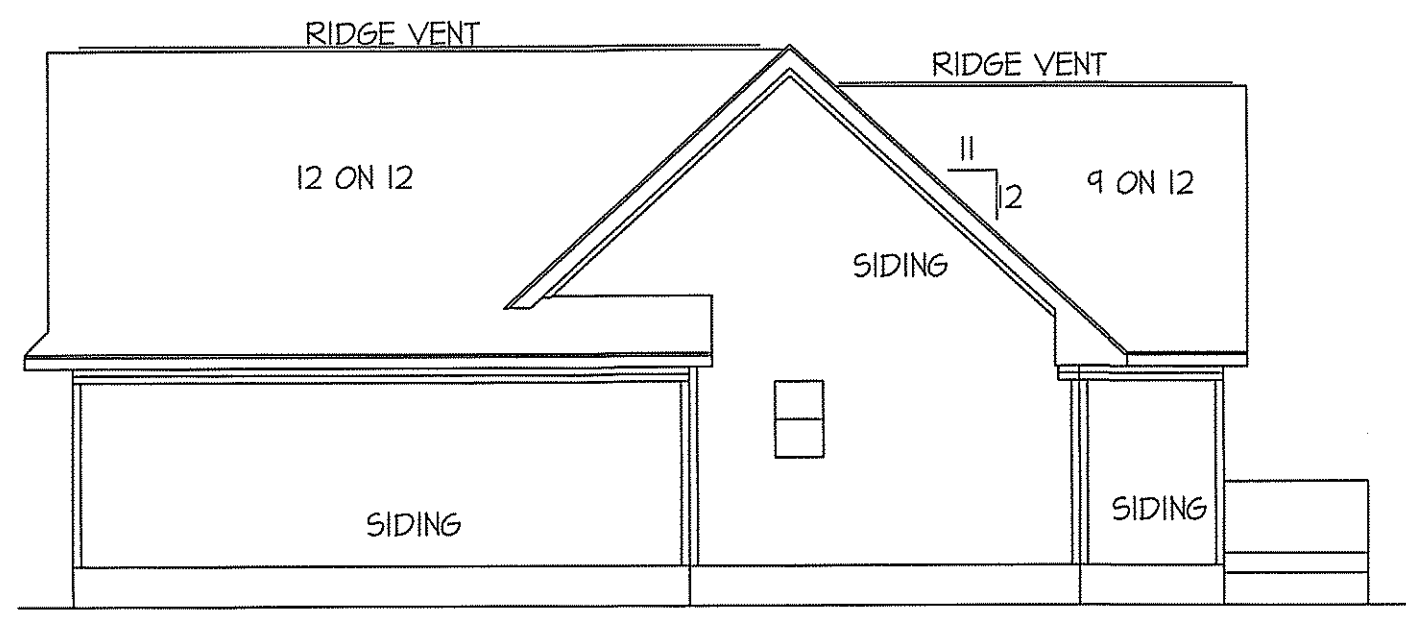
PROVIDE STEPS AS REQ'D.
BUILDER TO VERIFY GRADE
FIN'D. VENTS NOT SHOWN (SEE SHEET #3)

ROOF VENTILATION REQ'MTS.
2099 ATTIC SQ. FT. / 300 = 7.0

PROVIDED ON PLAN
120 L.F. RIDGE VENT = 22.5
163 L.F. SOFFIT VENT = 8.9
TOTAL = 31.40 S.F. FREE NET AREA



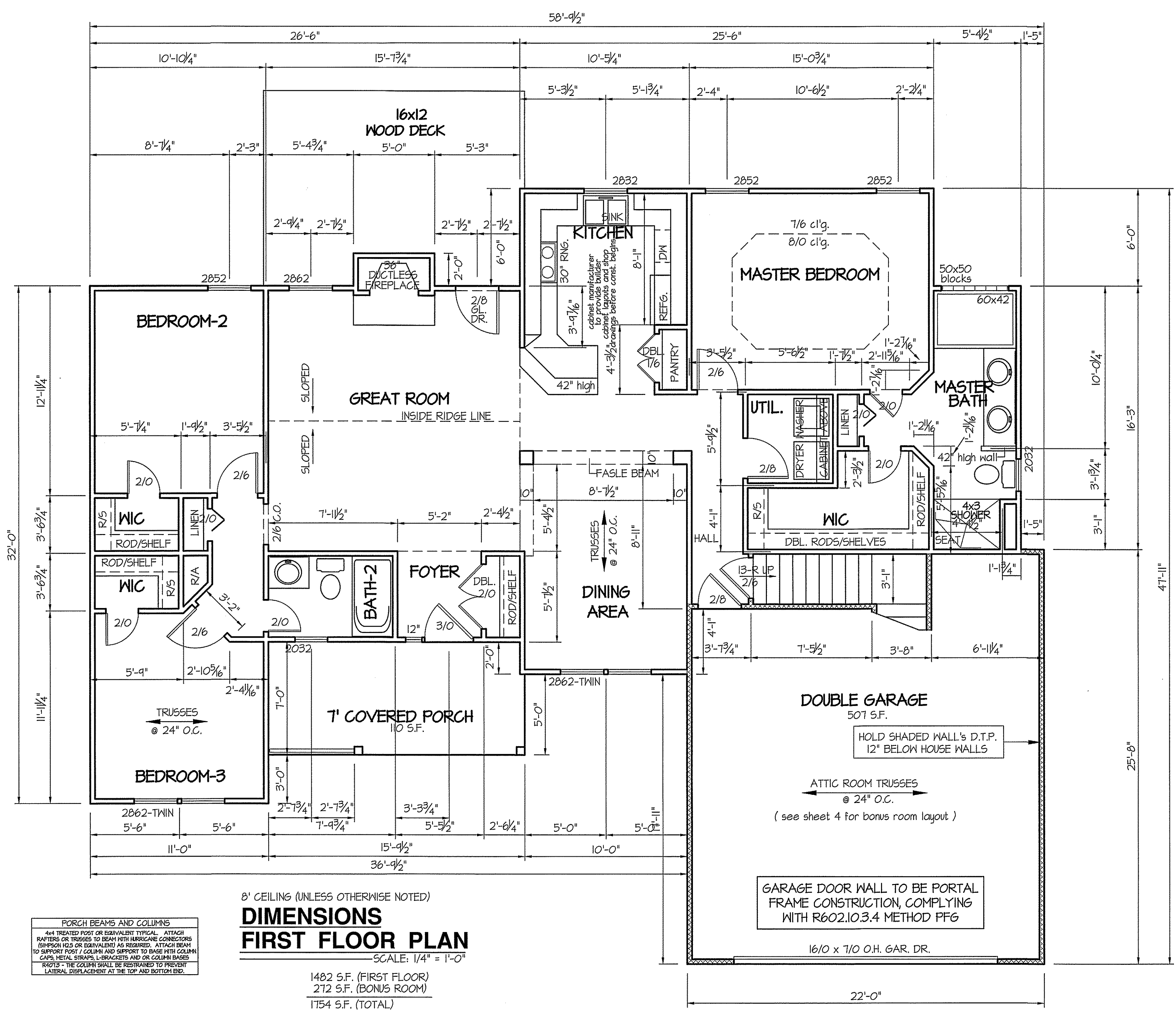
LEFT ELEVATION
SCALE: 1/8" = 1'-0"



RIGHT ELEVATION
SCALE: 1/8" = 1'-0"

DISK FILE NO. 59T FILE NAME: HUNTINGA - AUGUST 2002

DISK FILE NO. 547 FILE NAME: HUNTINGA - AUGUST 2002

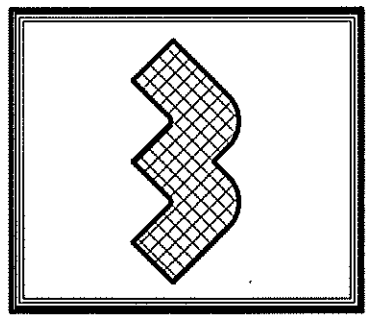


PORCH BEAMS AND COLUMNS
 4x4 TREATED POST OR EQUIVALENT TYPICAL. ATTACH RAFTERS OR TRUSSES TO BEAM WITH HURRICANE CONNECTORS (SIMPSON HCS OR EQUIVALENT) AS REQUIRED. ATTACH BEAM TO SUPPORT POST / COLUMN AND SUPPORT TO BASE WITH COLUMN CAPS, METAL STRAPS, L-BRACKETS AND OR COLUMN BASES.
 *NOTES - THE COLUMN SHALL BE RESTRAINED TO PREVENT LATERAL DISPLACEMENT AT THE TOP AND BOTTOM END.

8' CEILING (UNLESS OTHERWISE NOTED)
DIMENSIONS
FIRST FLOOR PLAN
 SCALE: 1/4" = 1'-0"
 1482 S.F. (FIRST FLOOR)
 272 S.F. (BONUS ROOM)
 1754 S.F. (TOTAL)

DATE:
 MARCH - 2018

WELLONS HOMES
 P.O. BOX 730
 DUNN, N.C. - 28335
 O: (910) 892-3123 FAX: (910) 892-5032
 © 2018, WELLONS HOMES

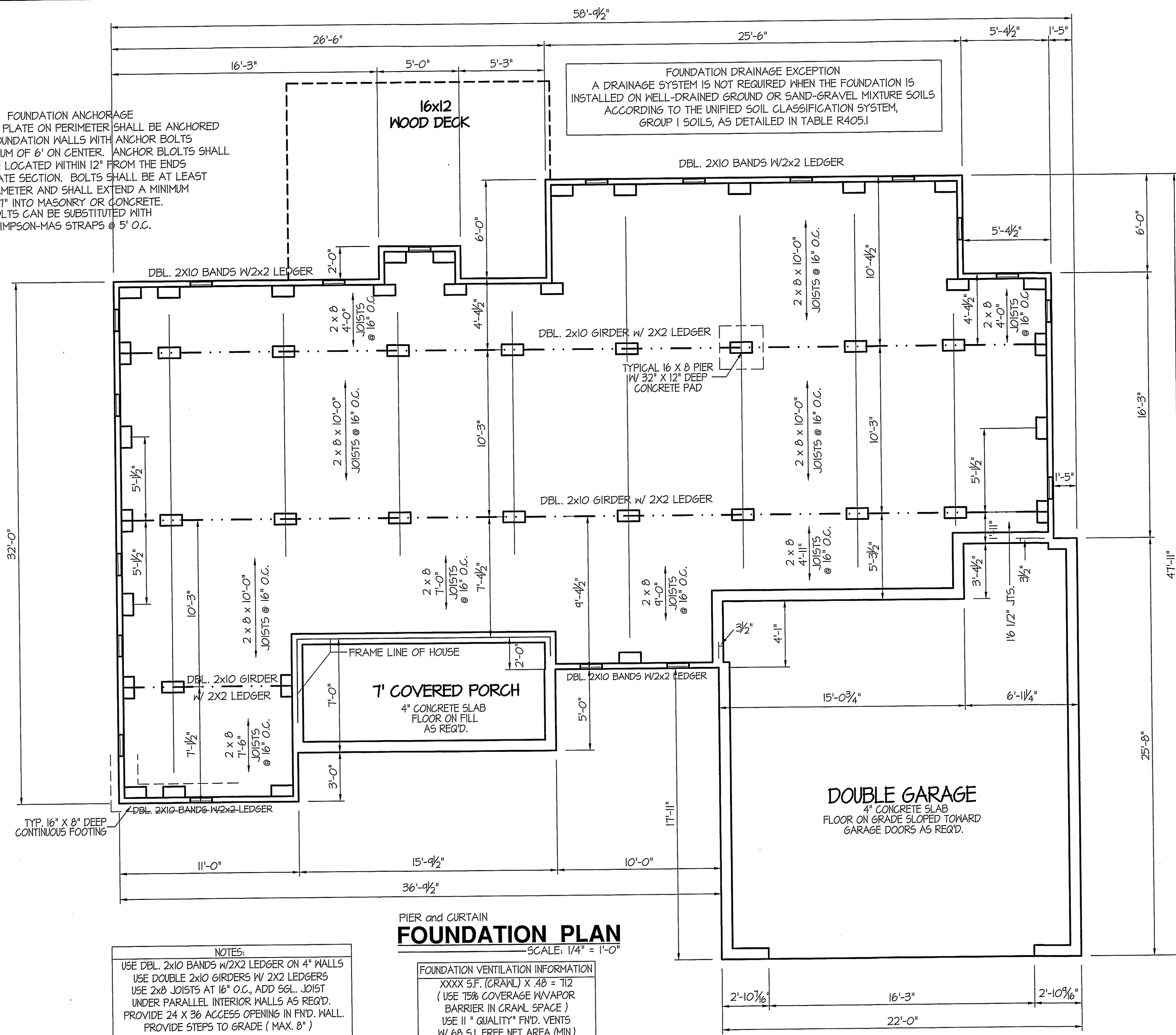


EXCLUSIVE PLAN FOR
WELLONS HOMES
 WATERFORD COLLECTION SERIES
HUNTINGTON - A
 REVERSED

PLAN:
 SHEET NO.
2

FOUNDATION ANCHORAGE
 THE WOOD SILL PLATE ON PERIMETER SHALL BE ANCHORED TO THE FOUNDATION WALLS WITH ANCHOR BOLTS SPACED A MAXIMUM OF 6' ON CENTER. ANCHOR BOLTS SHALL ALSO BE LOCATED WITHIN 12" FROM THE ENDS OF EACH PLATE SECTION. BOLTS SHALL BE AT LEAST 1/2" IN DIAMETER AND SHALL EXTEND A MINIMUM OF 7" INTO MASONRY OR CONCRETE. BOLTS CAN BE SUBSTITUTED WITH SIMPSON-MAS STRAPS @ 5' O.C.

FOUNDATION DRAINAGE EXCEPTION
 A DRAINAGE SYSTEM IS NOT REQUIRED WHEN THE FOUNDATION IS INSTALLED ON WELL-DRAINED GROUND OR SAND-GRAVEL MIXTURE SOILS ACCORDING TO THE UNIFIED SOIL CLASSIFICATION SYSTEM, GROUP 1 SOILS, AS DETAILED IN TABLE R405.1



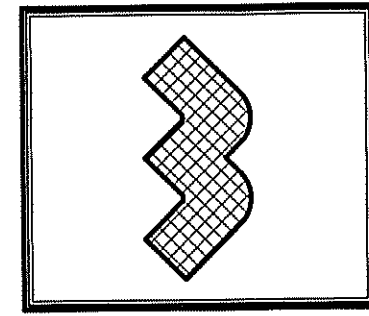
NOTES:
 USE DBL. 2x10 BANDS W/2X2 LEDGER ON 4" WALLS
 USE DOUBLE 2x10 GIRDERS W/ 2X2 LEDGERS
 USE 2x8 JOISTS AT 16" O.C., ADD SGL. JOIST UNDER PARALLEL INTERIOR WALLS AS REQ'D.
 PROVIDE 24 X 36 ACCESS OPENING IN FND. WALL.
 PROVIDE STEPS TO GRADE (MAX. 8")

PIER and CURTAIN
FOUNDATION PLAN
 SCALE: 1/4" = 1'-0"

FOUNDATION VENTILATION INFORMATION
 XXXX S.F. (CRAWL) X .48 = 712
 (USE 75% COVERAGE WVAPOR BARRIER IN CRAWL SPACE)
 USE 11" QUALITY" FND. VENTS
 W/ 68 S.I. FREE NET AREA (MIN.)

DATE:
 MARCH - 2018

WELLONS HOMES
 P.O. BOX 730
 DUNN, N.C. - 28335
 O: (910) 892-3123 FAX: (910) 892-5032
 © 2018, WELLONS HOMES

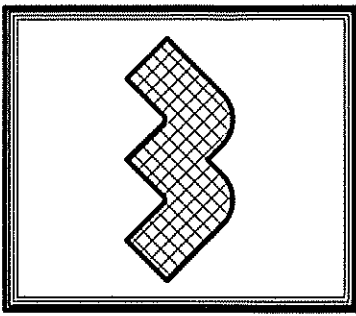


EXCLUSIVE PLAN FOR
WELLONS HOMES
 WATERFORD COLLECTION SERIES
HUNTINGTON - A
 REVERSED

SHEET NO.
3

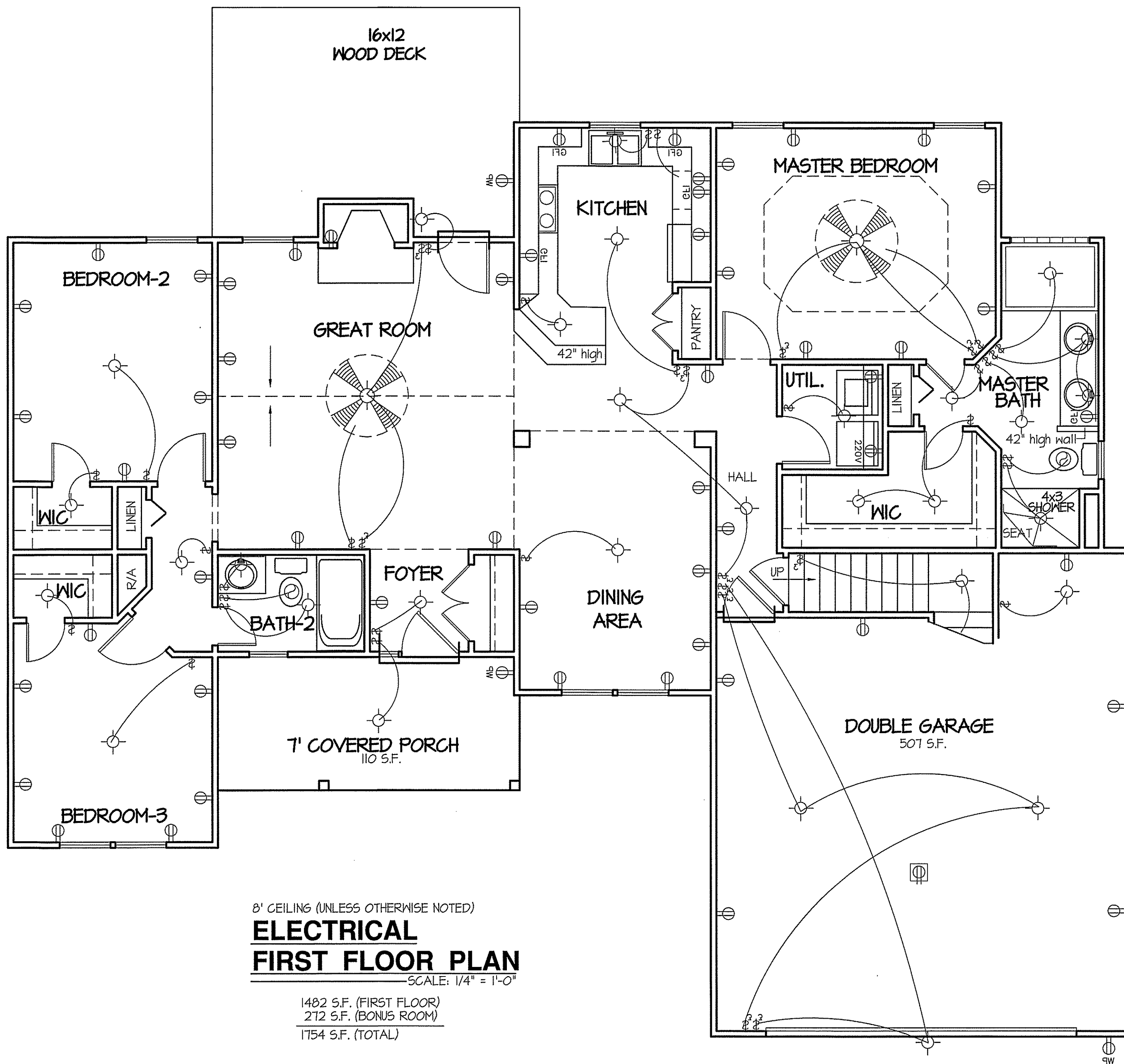
DATE:
MARCH - 2018

WELLONS HOMES
P.O. BOX 730
DUNN, N.C. - 28335
O: (910) 892-3123 FAX: (910) 892-5032
© 2018, WELLONS HOMES

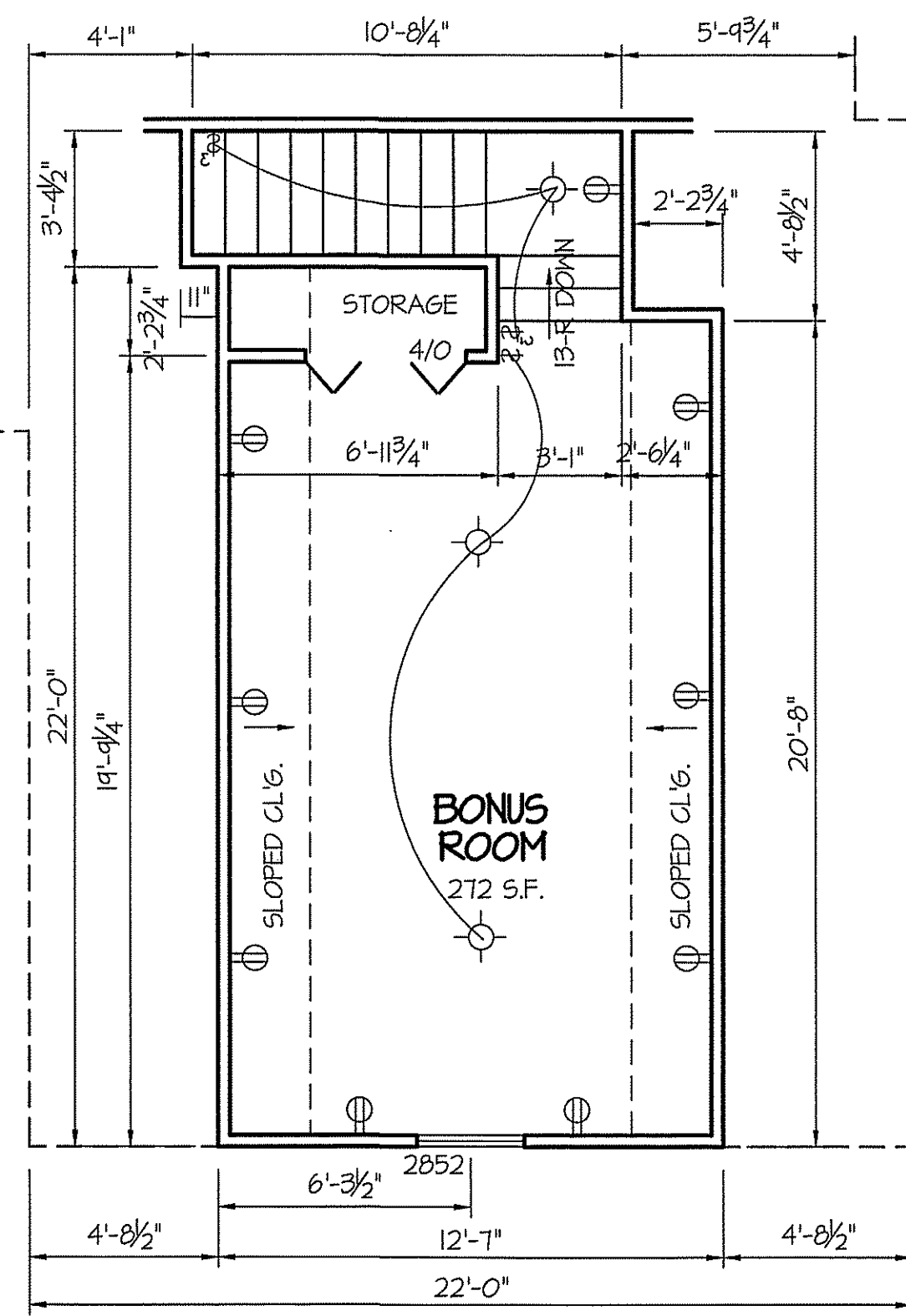


EXCLUSIVE PLAN FOR
WELLONS HOMES
WATERFORD COLLECTION SERIES
HUNTINGTON - A
REVERSED

PLAN:
SHEET NO.
4



8' CEILING (UNLESS OTHERWISE NOTED)
ELECTRICAL
FIRST FLOOR PLAN
SCALE: 1/4" = 1'-0"
1482 S.F. (FIRST FLOOR)
272 S.F. (BONUS ROOM)
1754 S.F. (TOTAL)



DIM./ELEC.
BONUS ROOM
SCALE: 1/4" = 1'-0"

DISK FILE NO. 591- FILE-NAME: HUNTINGA - AUGUST 2002