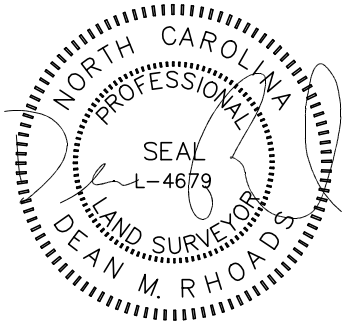


VICINITY MAP
Not To Scale



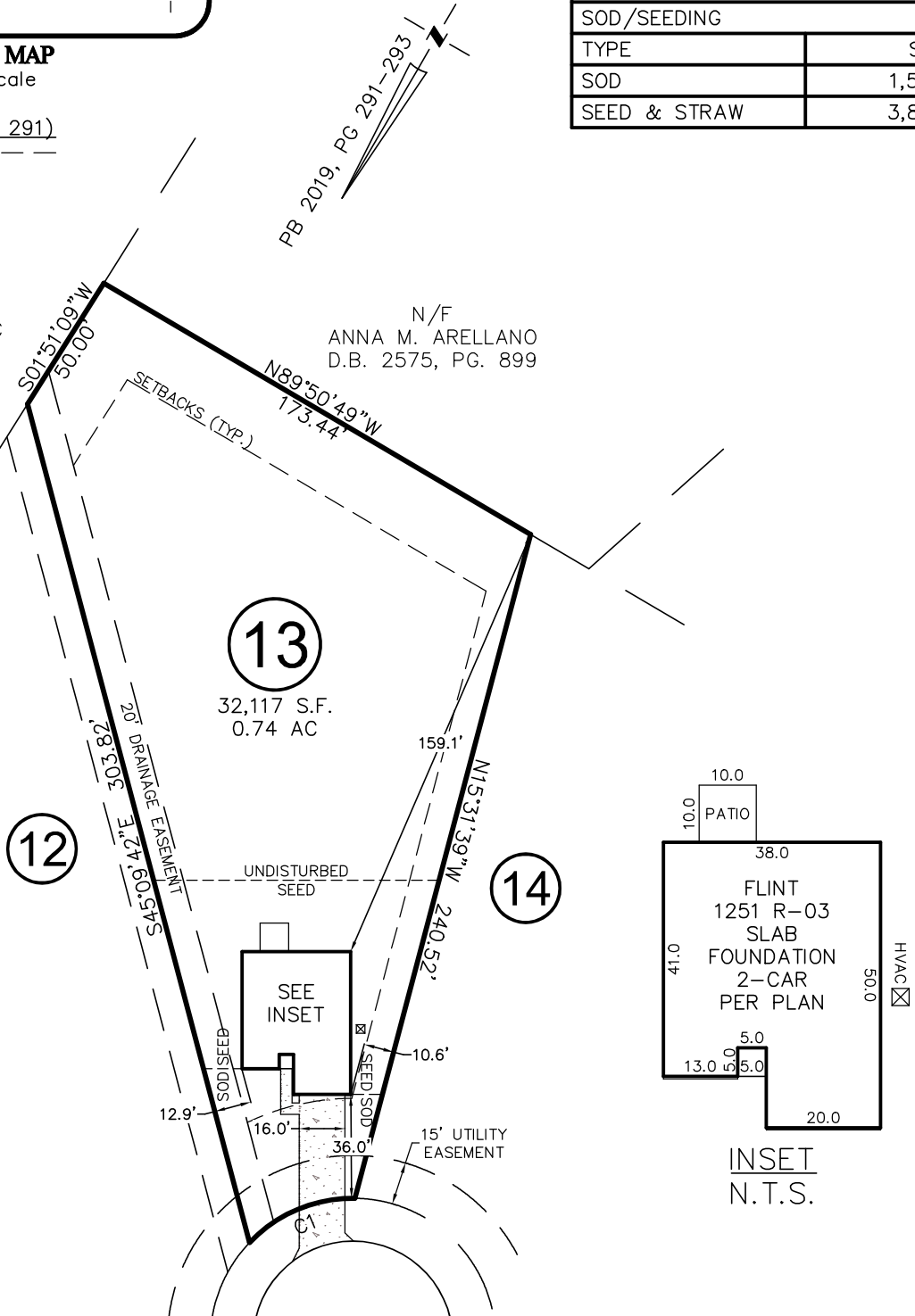
IMPERVIOUS SURFACE AREA	
DESCRIPTION	AREA (S.F.)
LOT AREA TO B/C	32,692
HOUSE	1,738
DRIVE TO R/W	606
DRIVE APRON	259
PATIO	100
LEAD WALK	74
PUBLIC WALK	0
TOTAL PROPOSED	3,138
% IMPERVIOUS AREA	=8.1%
SOD/SEEDING	
TYPE	S.F.
SOD	1,595
SEED & STRAW	3,896

SETBACKS: (PB 2019 PG 291)

FRONT - 35'
SIDE - 10'
REAR - 25'
CORNER - 20'

N/F
SENER-MATTHEWS LLC
D.B. 3107, PG. 750

N/F
ANNA M. ARELLANO
D.B. 2575, PG. 899



NORRIS FARM DRIVE

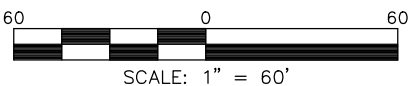
50' PUBLIC R/W & UTILITY EASEMENT

CURVE	RADIUS	ARC LENGTH	CH LENGTH	CH BEARING
C1	50.00'	41.15'	40.00'	N36°52'32"E

THIS PROPERTY MAY BE SUBJECT TO ANY AND ALL APPLICABLE DEED RESTRICTIONS, EASEMENTS, RIGHT-OF-WAY, UTILITIES AND RESTRICTIVE COVENANTS WHICH MAY BE OF RECORD OR IMPLIED

THIS DRAWING DOES NOT REFLECT AS-BUILT INFORMATION

PRELIMINARY PLAT
NOT FOR RECORDATION, CONVEYANCES, OR SALES.



RESIDENTIAL LAND SERVICES, PLLC.

1917 Evans Road
Cary, North Carolina 27513
Phone (919) 378-9316
Firm License # P-0873

HOUSE LOCATION PLOT PLAN

FOR
#220 NORRIS FARM DRIVE
LOT 13, NORRIS FARM SUBDIVISION
Black River Township, Harnett County, North Carolina

PROPERTY OF: TRUE HOMES
MAP BOOK 2019 PAGE 291-293 DEED REFERENCE _____

DRAWN BY: ADP

DATE: MAY 12, 2020