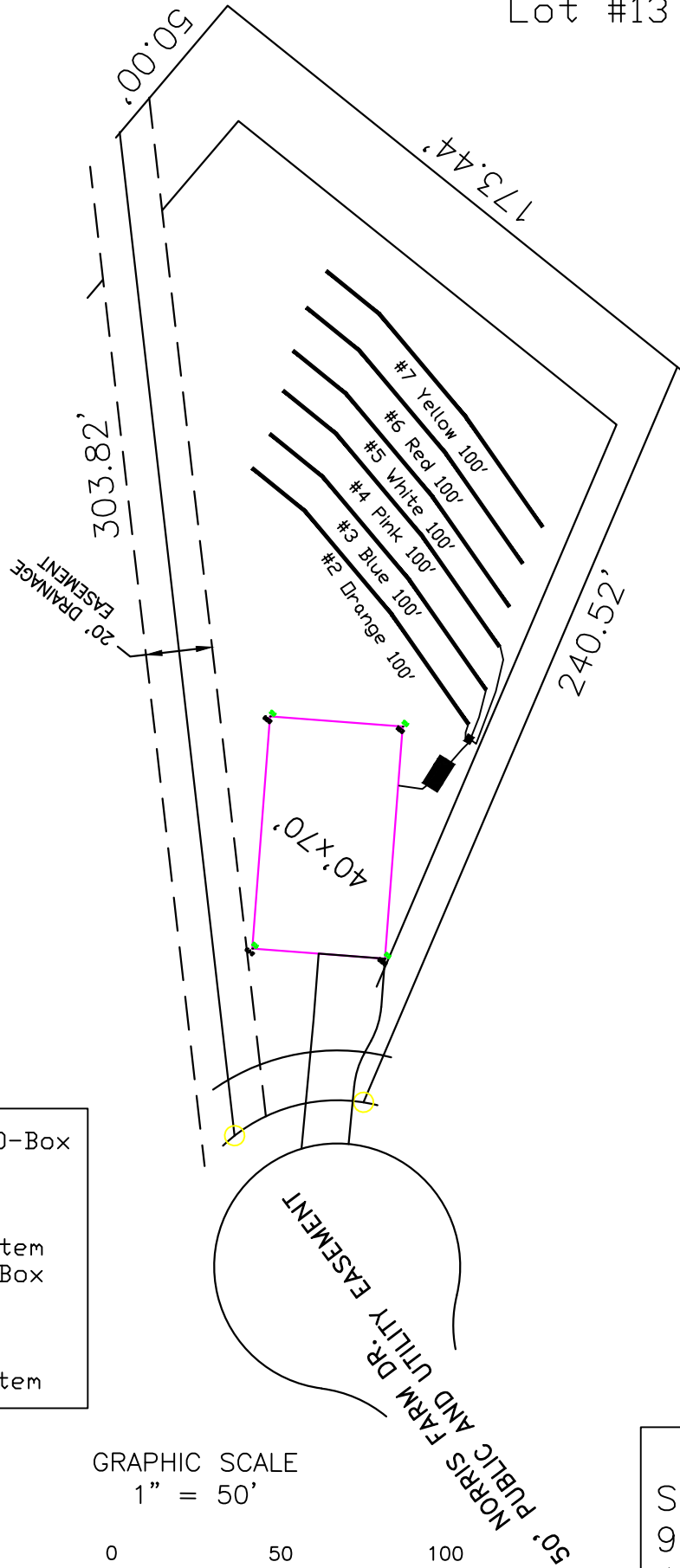


Norris Farm  
 4-Bedroom Septic Proposal  
 Lot #13

13

0.737 AC.  
 32117 SF



System: Gravity to D-Box  
 Lines: 2-4 (300')  
 0.4 LTAR  
 24" Trench Bottom  
 Accepted Status System  
 Repair: Gravity to D-Box  
 Lines: 5-7 (300')  
 0.4 LTAR  
 24" Trench Bottom  
 Accepted Status System

GRAPHIC SCALE  
 1" = 50'



Adams  
 Soil Consulting  
 919-414-6761  
 Job #574