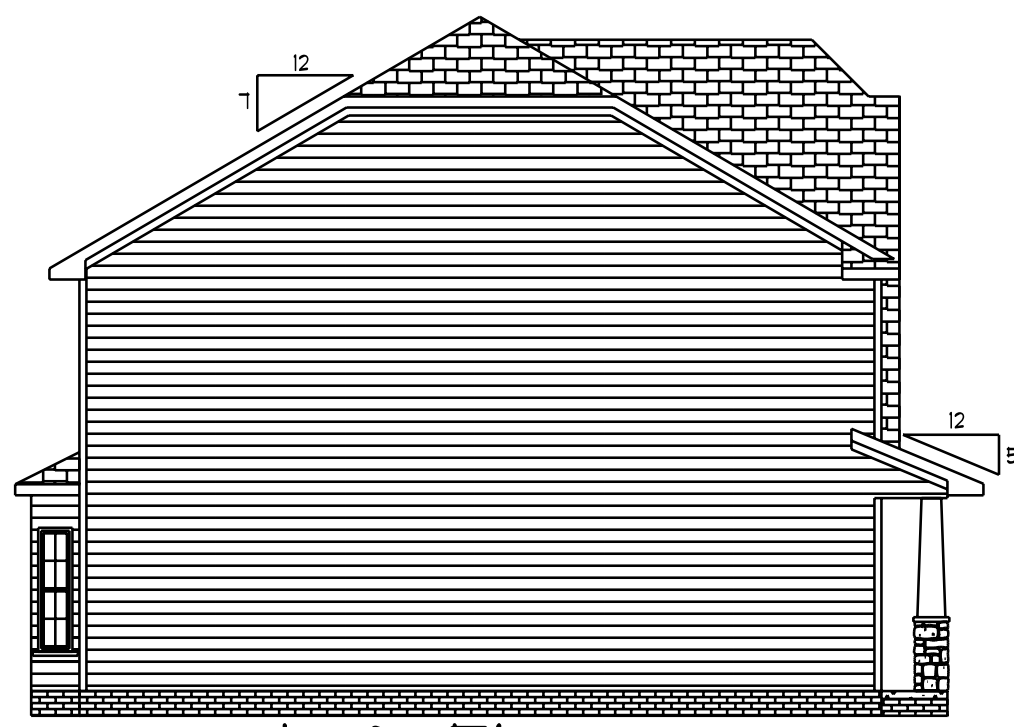
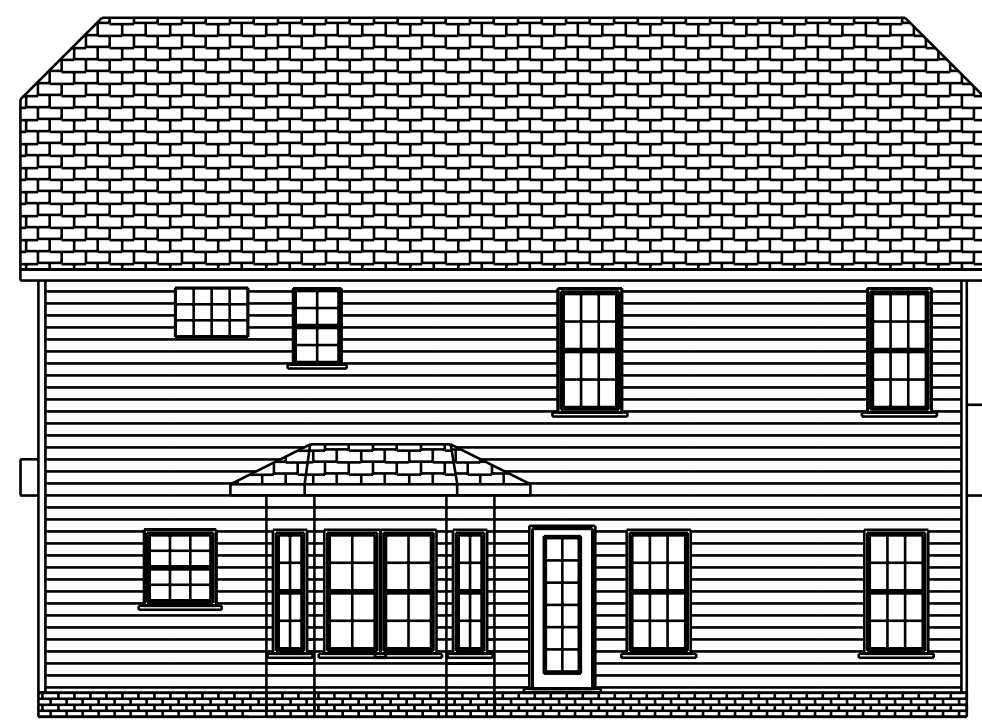


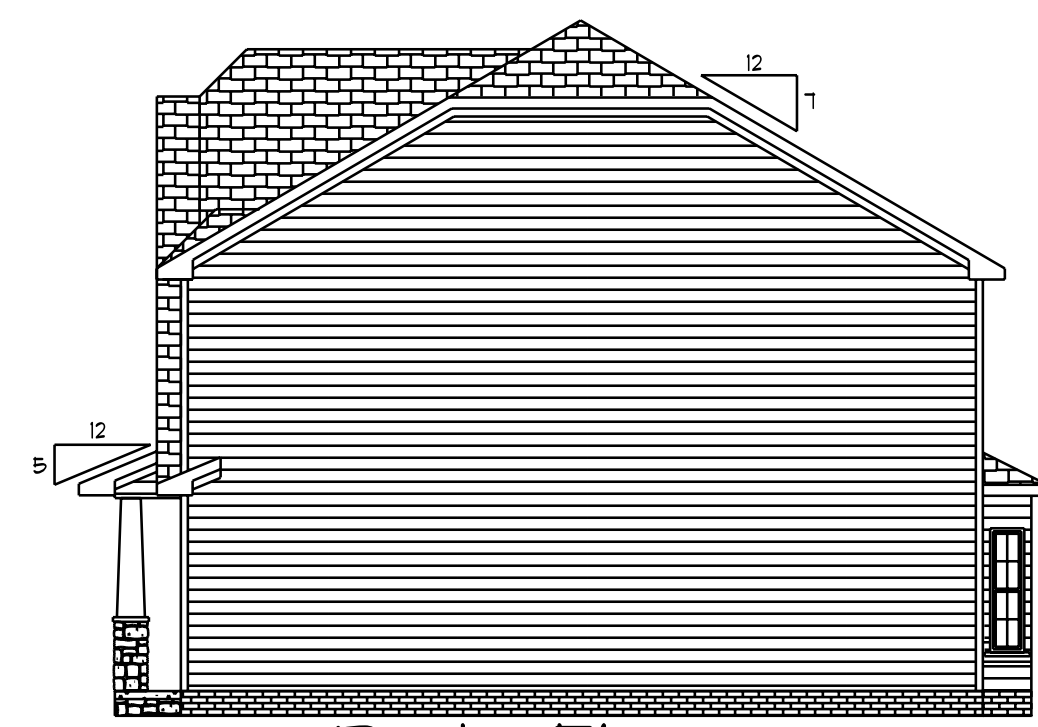
Front Elevation
Scale: 1/4" = 1'0"



Left Elevation
Scale: 1/4" = 1'0"



Rear Elevation
Scale: 1/4" = 1'0"



Right Elevation
Scale: 1/4" = 1'0"

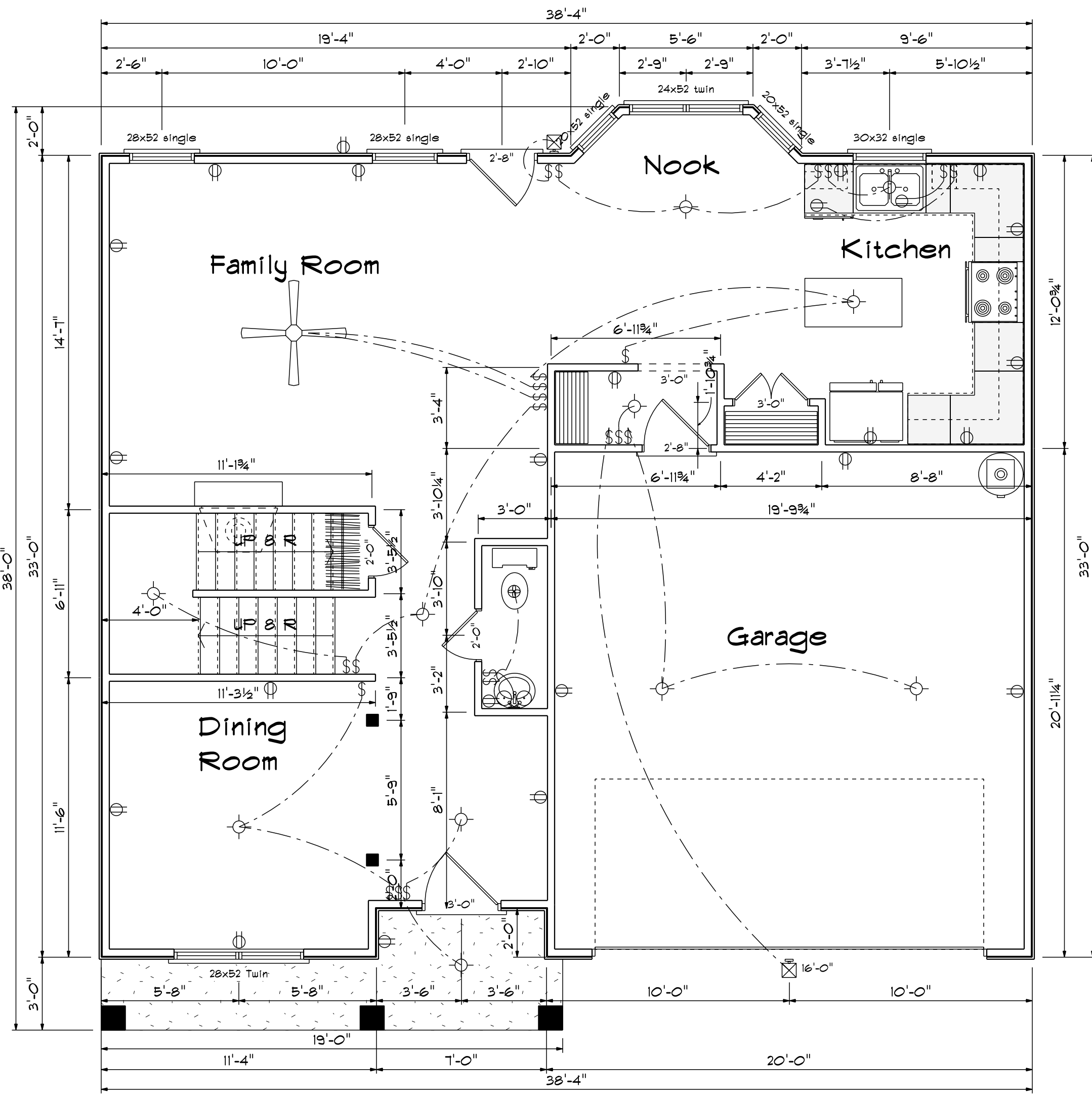
Base Designs
2727 Chimney Pt.
Linden, N.C. 28356
910-864-9310

DATE: Friday, April 26, 2019
REVISED
DRAWING#

SCALE: 1/4"
DRAWN BY
APPROVED

Lot # 32 Stagecoach Estates

BBH-2052



First Floor Plan

Kitchen Cabinets

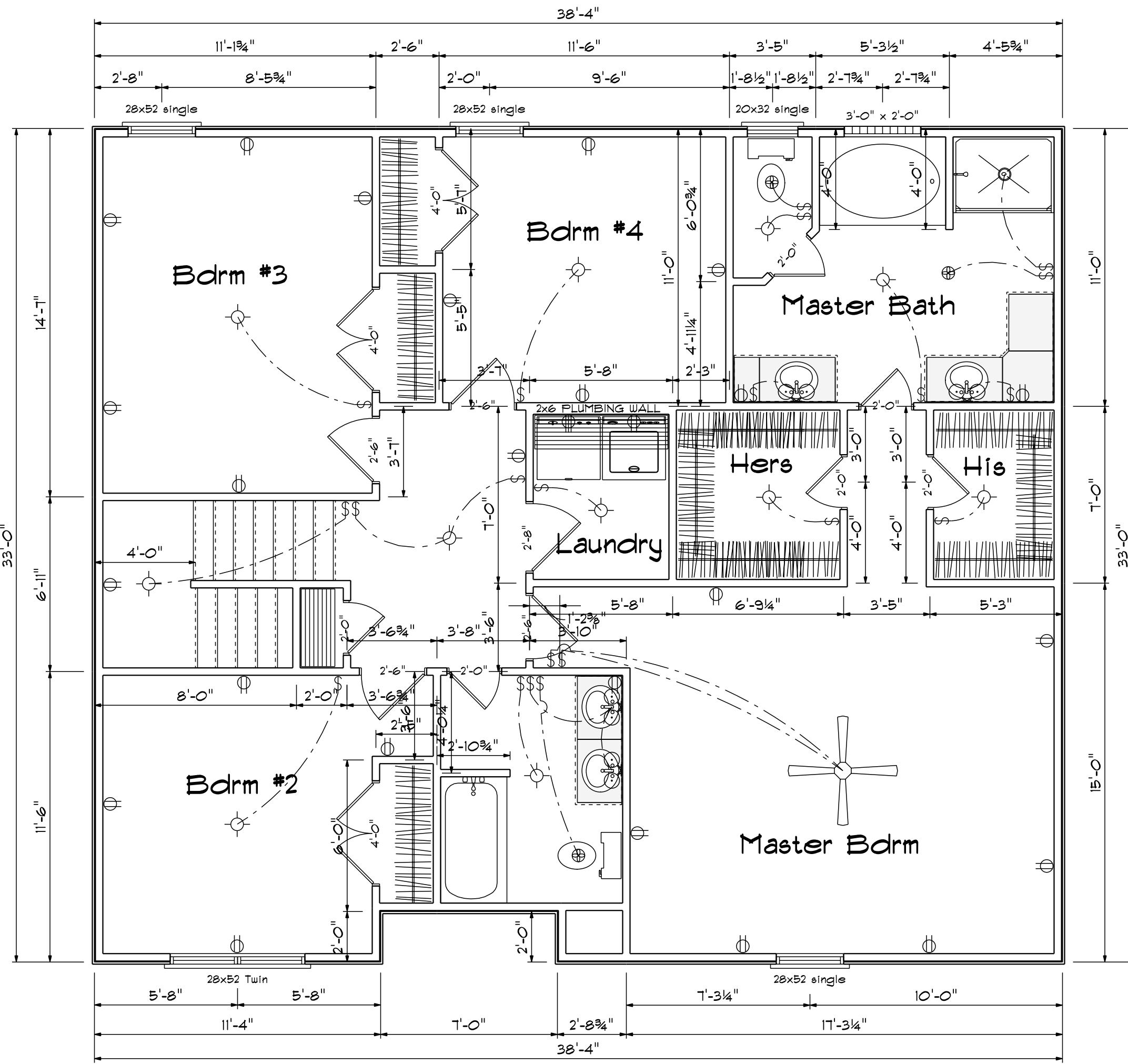


Openings Schedule

| PRODUCT CODE | SIZE | HINGE DIRECTION | COUNT |
|------------------------|---------------|-----------------|-------|
| 36X80 COLONIAL A 1 | 3'-0" | R | 1 |
| 32X80 FRENCH A 1 | 2'-8" | R | 1 |
| 192X84 - 1 PANEL | 16'-0" | U | 1 |
| 20 colonial-MODIFIED | 2'-0" | L | 1 |
| 20 colonial | 2'-0" | R | 1 |
| 30 doublehung colonial | 3'-0" | LR | 1 |
| 32X80 COLONIAL A 1 | 2'-8" | R | 1 |
| 20x52 single | 2'-0" x 5'-2" | N | 2 |
| 24x52 twin | 4'-8" x 5'-2" | NA | 1 |
| 28x52 Twin | 5'-4" x 5'-2" | NA | 1 |
| 28x52 single | 2'-8" x 5'-2" | N | 2 |
| 30x32 single | 3'-0" x 3'-2" | N | 1 |

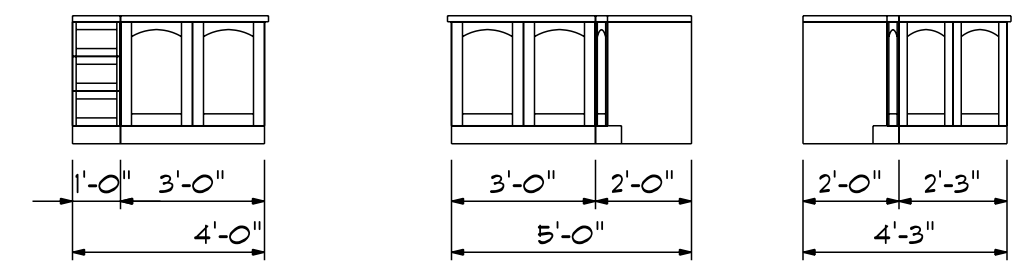
Areas

| | |
|--------------|------|
| First Floor | 865 |
| Second Floor | 1189 |
| ===== | |
| Total Heated | 2052 |
| Garage | 413 |
| Porch | 70 |

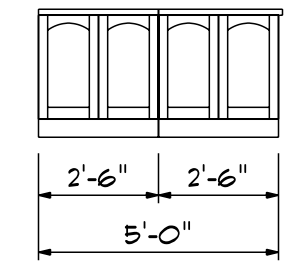


Second Floor Plan
 Scale: 1/4" = 1'-0"

Master Bath Cabinets

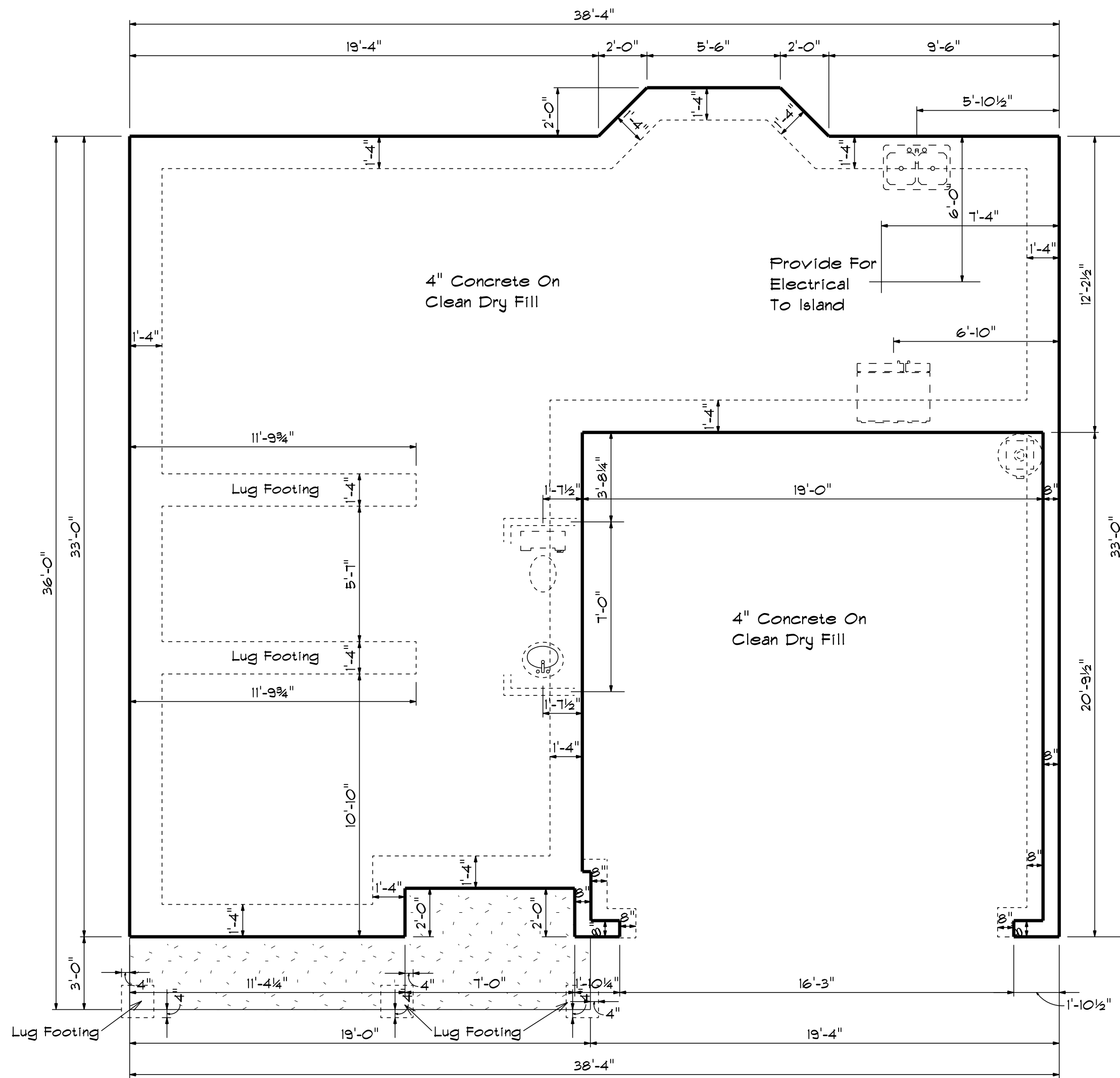


Hall Bath Cabinets



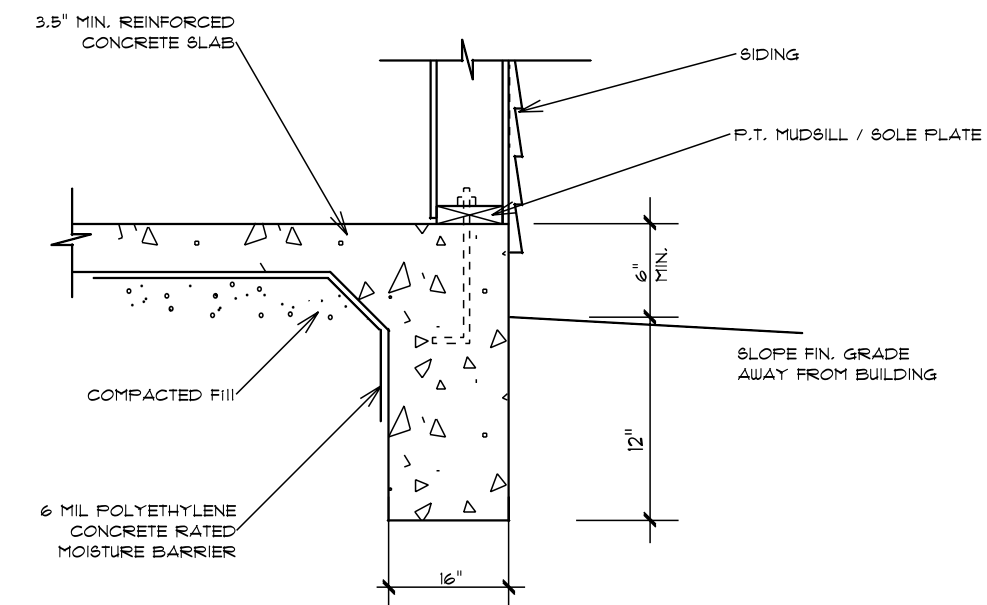
Openings Schedule

| PRODUCT CODE | SIZE | HINGE DIRECTION | COUNT |
|---------------------------------|---------------|-----------------|-------|
| 20 colonial-MODIFIED | 2'-0" | L | 2 |
| 20 colonial | 2'-0" | R | 4 |
| 26 colonial-MODIFIED | 2'-6" | L | 4 |
| 40 doublehung colonial-MODIFIED | 4'-0" | LR | 3 |
| 32X80 COLONIAL A 1 | 2'-8" | R | 1 |
| 20x32 single | 2'-0" x 3'-2" | N | 1 |
| 28x52 Twin | 5'-4" x 5'-2" | NA | 1 |
| 28x52 single | 2'-8" x 5'-2" | N | 3 |
| 6X6 GLASS BLOCK-MODIFIED | 3'-0" x 2'-0" | N | 1 |

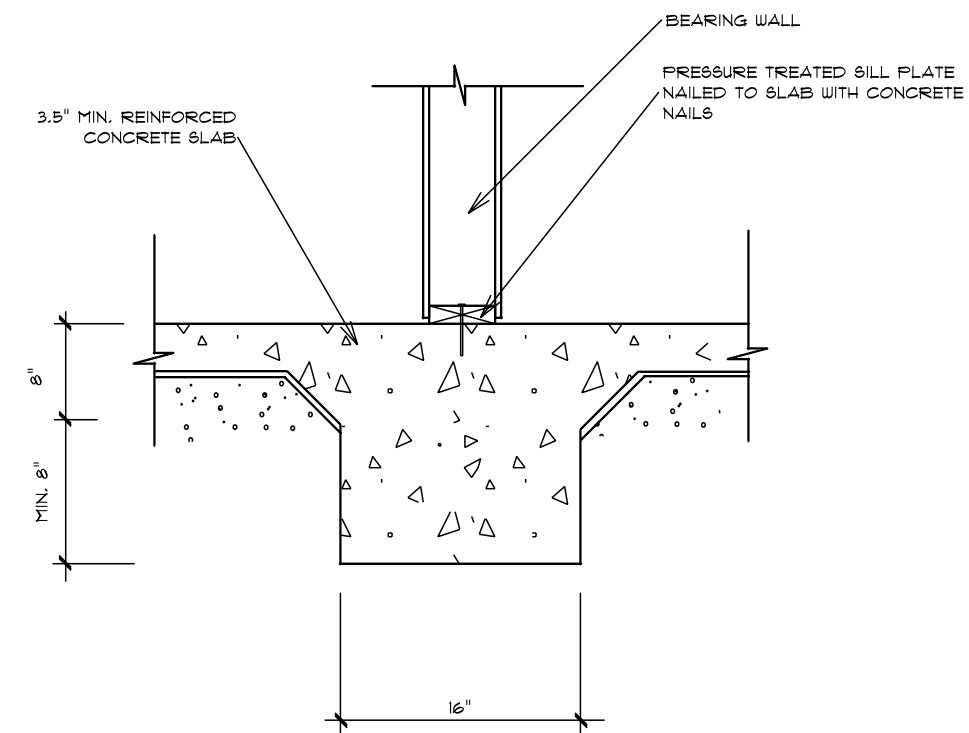


Foundation Plan

Scale: 1/4" = 1'-0"



TURN-DOWN FOOTING DETAIL



INTEGRAL SLAB FOOTING DETAIL AT BEARING WALL