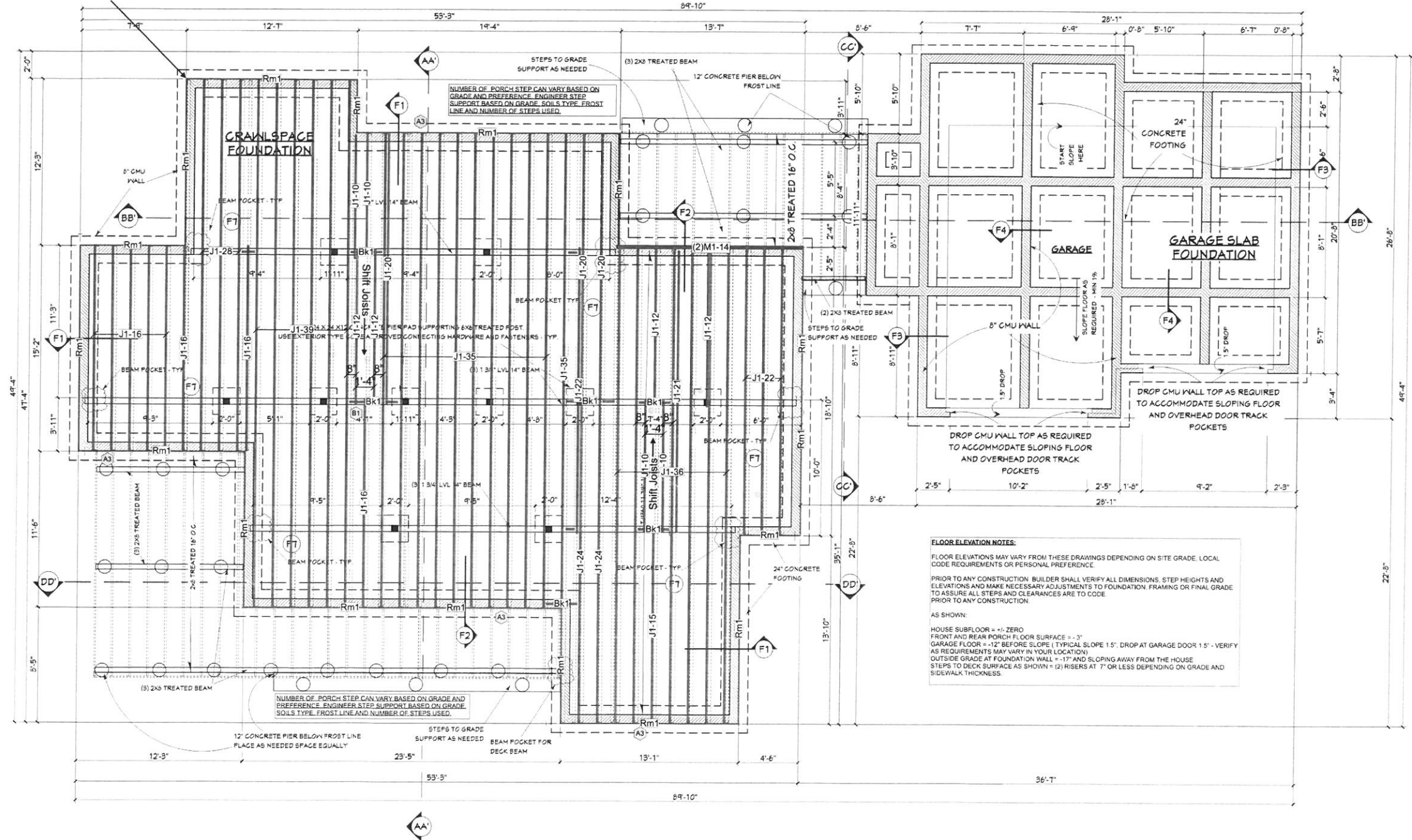


Tag	Qty	Product	Len	Cut	Logic
Floor Joist					
J1	62	5/16"x11-7/8" TJI® 360	40'6"	1/38	
J1	172	5/16"x11-7/8" TJI® 360	36'6"	1/36	11x(1/36)
J1	32	5/16"x11-7/8" TJI® 360	28'3"	1/28	
J1	23	5/16"x11-7/8" TJI® 360	24'2"	1/24	
J1	52	5/16"x11-7/8" TJI® 360	22'4"	1/22	1x(1/21)
J1	32	5/16"x11-7/8" TJI® 360	20'3"	1/20	
J1	92	5/16"x11-7/8" TJI® 360	16'8"	1/16	1x(1/15)
J1	42	5/16"x11-7/8" TJI® 360	12'4"	1/12	
J1	42	5/16"x11-7/8" TJI® 360	10'4"	1/10	
Floor Joist Blocking					
Bk1	21	2-5/16"x11-7/8" TJI® 360			R/L
Beam					
M1	2	1-3/4"x11-7/8" MicroIam® LVL	14'2"	1/14	
Rim					
Rm1	12	1-1/8"x11-7/8" TJI® Rim Board	16'12"	1/16	

Start Framing Here
11 7/8" TJI 360 @16" O.C.



FLOOR ELEVATION NOTES:
FLOOR ELEVATIONS MAY VARY FROM THESE DRAWINGS DEPENDING ON SITE GRADE, LOCAL CODE REQUIREMENTS OR PERSONAL PREFERENCE.
PRIOR TO ANY CONSTRUCTION BUILDER SHALL VERIFY ALL DIMENSIONS, STEP HEIGHTS AND ELEVATIONS AND MAKE NECESSARY ADJUSTMENTS TO FOUNDATION, FRAMING OR FINAL GRADE TO ASSURE ALL STEPS AND CLEARANCES ARE TO CODE PRIOR TO ANY CONSTRUCTION.
AS SHOWN:
HOUSE SUBFLOOR = +0. ZERO
FRONT AND REAR PORCH FLOOR SURFACE = -3"
GARAGE FLOOR = -12" BEFORE SLOPE (TYPICAL SLOPE 1.5% DROP AT GARAGE DOOR 1.5" - VERIFY AS REQUIREMENTS MAY VARY BY YOUR LOCATION)
OUTSIDE GRADE AT FOUNDATION WALL = -17" AND SLOPING AWAY FROM THE HOUSE
STEPS TO DECK SURFACE AS SHOWN = (2) RISERS AT 7" OR LESS DEPENDING ON GRADE AND SIDEWALK THICKNESS.

Mabus Contractors
McKinney Residence
1st Floor Layout

These joist placement layouts have been prepared for the specification of Trus Joist products based on project information provided. The contractor is responsible for product application, assurance, and for intended to circumvent the need for a design professional as determined by the building codes. The designer of record and/or builder/framer is responsible to assure these drawings are compatible with the overall project.

HOW MUCH IS YOUR TIME WORTH?
Tired of spending time nailing, screwing or bolting multi-ply beams and columns together? **PARALLAM® PSL Beams & Columns** is the "smarter" choice for framing larger width beams and columns. Pick it up, put it in, keep on framing!

GENERAL NOTES:

- Joists may be shifed up to 3" from on center spacing to avoid hanger interference. Flush beams and/or plumbing drops. **DO NOT CUT JOIST FLANGES.**
- All EWP beams have been designed assuming full width support of the members/piles, unless noted otherwise.
- This drawing may contain deviations from the original project documents. It is the responsibility of the contractor to notify the project Design Professional of these deviations to verify conformance with the original design intent of the project.

GENERAL NOTES:

- This layout is intended for the use of Trus Joist engineered wood products only. The substitution of other wood products with this layout is **NOT PERMITTED**. Please identify the TJI®, TimberStrand® LSL, MicroIam® LVL and Parallam® PSL stamps on the product to ensure that this layout is valid for the products actually installed.
- Only header openings and roof loads which affect Weyerhaeuser product sizes have been denoted on this layout. In addition to and CS' detail callouts shown, solid blocking and/or squash blocks are required to provide vertical load transfer from all concentrated load locations to foundation below. See Pocket Framers Guide for appropriate detail(s).

