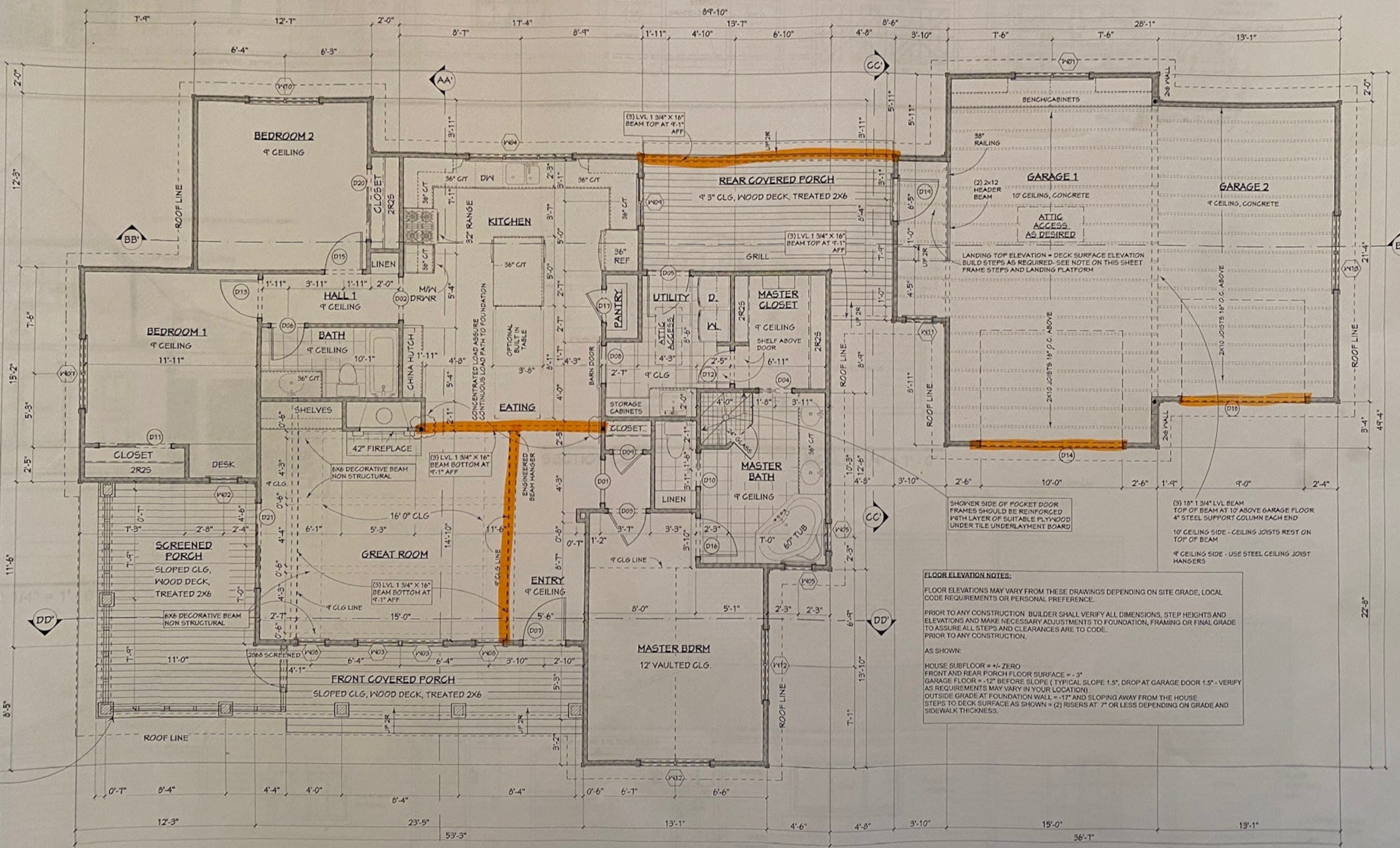


D01	KITCHEN/HALL 1	1	3070	DOORWAY
D02	ENTRY/MASTER BDRM	1	2570	HINGED DOOR F04
D03	MASTER BATH/MASTER CLOSET	1	2570	POCKET COVERED
D04	UTILITY/REAR COVERED PORCH	1	2470	EXT. HINGED DOOR E20
D05	BATH/HALL 1	1	2470	R IN HINGED DOOR F01
D06	ENTRY/FRONT COVERED PORCH	1	2470	R EX EXT. HINGED DOOR E20
D07	UTILITY/KITCHEN	1	2570	DOORWAY
D08	ENTRY/COAT CLOSET	1	2170	L IN HINGED DOOR F04
D09	MASTER BATH/MASTER BATH	1	2470	R IN POCKET DOOR F04
D10	BEDROOM 1/BEDROOM 1	1	2470	L IN SLIDER DOOR F04
D11	UTILITY/MASTER CLOSET	1	2470	L IN HINGED DOOR F04
D12	HALL 1/BEDROOM 1	1	2570	R IN HINGED DOOR F04
D13	GARAGE 1	1	10200	GARAGE GARAGE DOOR
D14	BEDROOM 2/HALL 1	1	2570	R IN HINGED DOOR F04
D15	MASTER BATH/MASTER BDRM	1	2570	R IN HINGED DOOR F04
D16	PANTRY/KITCHEN	1	2470	L IN HINGED GLASS PANEL
D17	GARAGE 2	1	9070	GARAGE GARAGE DOOR
D18	GARAGE 1/REAR COVERED PORCH	1	3070	L EX EXT. HINGED DOOR
D19	CLOSET/BEDROOM 2	1	3070	L IN SLIDER DOOR F04
D20	GREAT ROOM/FRONT COVERED PORCH	1	6070	L EX EXT. SLIDER GLASS PANEL

W01	W02	W03	W04	W05	W06	W07	W08	W09	W10	W11	W12	W13
1	1	1	1	1	1	1	1	1	1	1	1	1
5496DC	2030FX	3050FX	7656TC	2030FX	7624TC	5050DC	2050FX	3636LS	5050DC	2030FX	5050DC	5440DC
DOUBLE CASEMENT-LHL/RHR	FIXED GLASS	FIXED GLASS	TRIPLE CASEMENT-LHL/RHR	FIXED GLASS	TRIPLE CASEMENT	DOUBLE CASEMENT-LHL/RHR	FIXED GLASS	LEFT SLIDING	DOUBLE CASEMENT-LHL/RHR	FIXED GLASS	DOUBLE CASEMENT-LHL/RHR	DOUBLE CASEMENT-LHL/RHR
					GREAT ROOM UPPER							

GREAT ROOM UPPER WINDOWS LAY OUT SCALE: 1/4" = 1'-0"



FLOOR ELEVATION NOTES:
 FLOOR ELEVATIONS MAY VARY FROM THESE DRAWINGS DEPENDING ON SITE GRADE, LOCAL CODE REQUIREMENTS OR PERSONAL PREFERENCE.
 PRIOR TO ANY CONSTRUCTION BUILDER SHALL VERIFY ALL DIMENSIONS, STEP HEIGHTS AND ELEVATIONS AND MAKE NECESSARY ADJUSTMENTS TO FOUNDATION, FRAMING OR FINAL GRADE TO ASSURE ALL STEPS AND CLEARANCES ARE TO CODE. PRIOR TO ANY CONSTRUCTION.
 AS SHOWN:
 HOUSE SUBFLOOR = +/- ZERO
 FRONT AND REAR PORCH FLOOR SURFACE = -3"
 GARAGE FLOOR = -12" BEFORE SLOPE (TYPICAL SLOPE 1.5", DROP AT GARAGE DOOR 1.5" - VERIFY AS REQUIREMENTS MAY VARY IN YOUR LOCATION)
 OUTSIDE GRADE AT FOUNDATION WALL = -17" AND SLOPING AWAY FROM THE HOUSE
 STEPS TO DECK SURFACE AS SHOWN = (2) RISERS AT 7" OR LESS DEPENDING ON GRADE AND SIDEWALK THICKNESS.