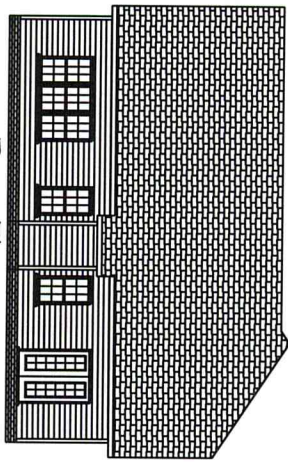
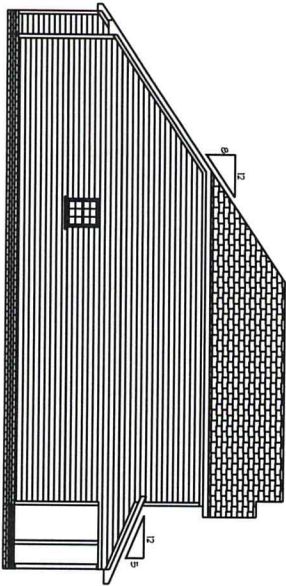


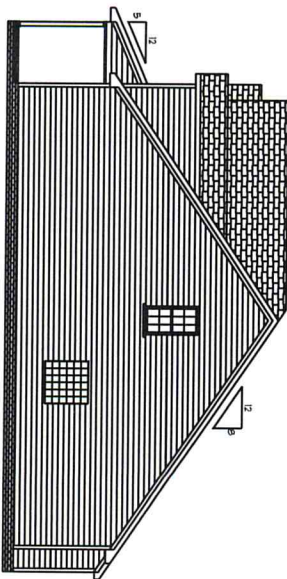
Front Elevation
Scale: 1/4" = 1'0"



Rear Elevation
Scale: 1/8" = 1'0"



Left Elevation
Scale: 1/8" = 1'0"



Right Elevation
Scale: 1/8" = 1'0"

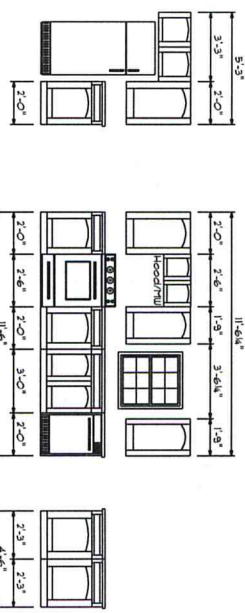
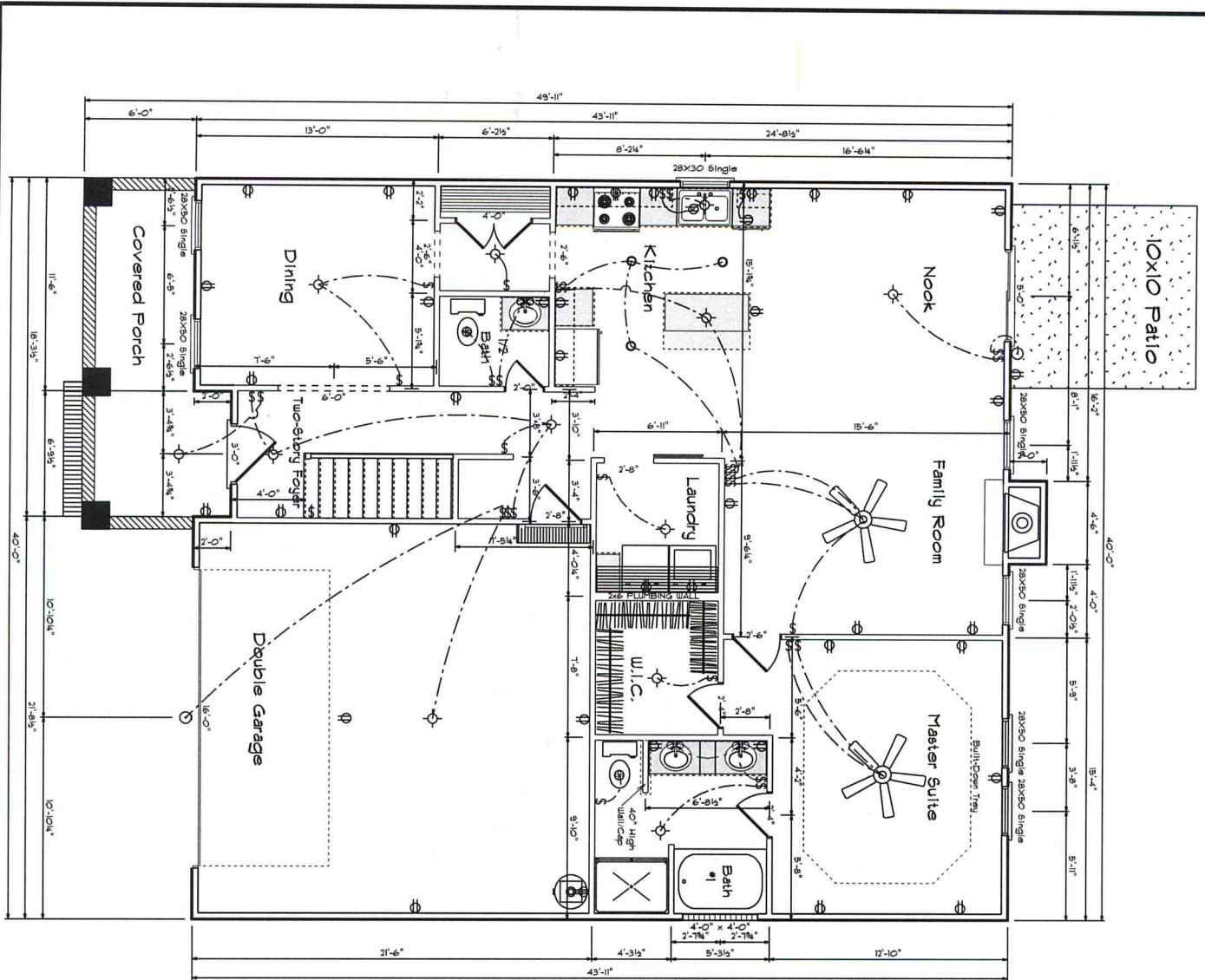
BBH-2034

The Appleton

SCALE	
DRAWN BY	
APPROVED	

DATE	Thursday, November 7, 2013
REVISED	
DRAWING*	

Base Designs
2727 Chimney Ft.
Linden N.C. 28356
910-864-9310



Kitchen Cabinets

FIRST FLOOR OPENING SCHEDULE		
PRODUCT CODE	SIZE	HINGE COUNT
36X80 COLONIAL A 1	3'-0"	R 1
192X84 - 2 PANEL	16'-0"	U 1
60X80 SLIDING FRENCH 2	5'-0"	NN 1
4-0 DEL HING DOOR UNIT	4'-0"	LR 1
2-0 DOOR UNIT	2'-0"	R 1
2-4 DOOR UNIT	2'-4"	L 2
2-4 DOOR UNIT	2'-4"	R 1
2-0 DOOR UNIT	2'-6"	R 1
2-8 DOOR UNIT	2'-8"	L 1
2-8 DOOR UNIT	2'-8"	R 1
2-8X3-0 single window unit	2'-8" x 3'-0"	N 1
2-8X5-0 single window unit	2'-8" x 5'-0"	N 6
8X8 GLASS BLOCK	4'-0" x 4'-0"	N 1

Areas

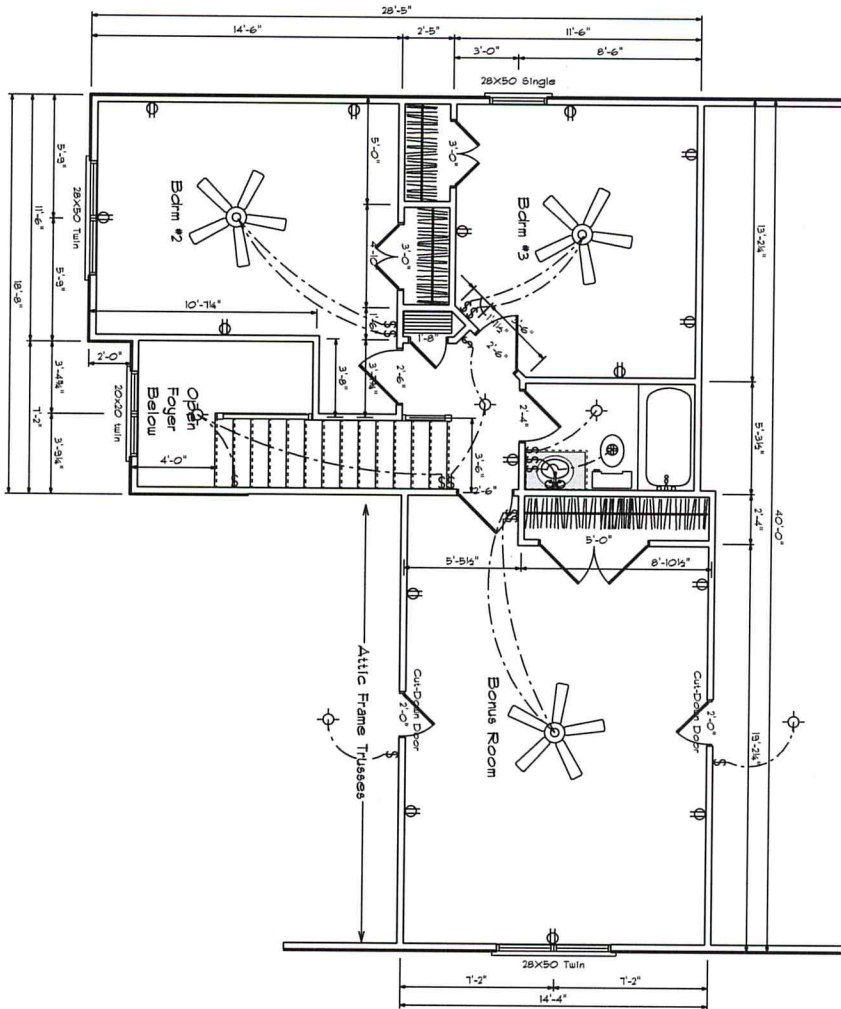
First Floor	9' Ceiling	1283+-
Second Floor	8' Ceiling	151+-
Total Heated		2034+-
Garage		458+-
Porch		132+-

First Floor Plan

Scale: 1/4" = 1'-0"

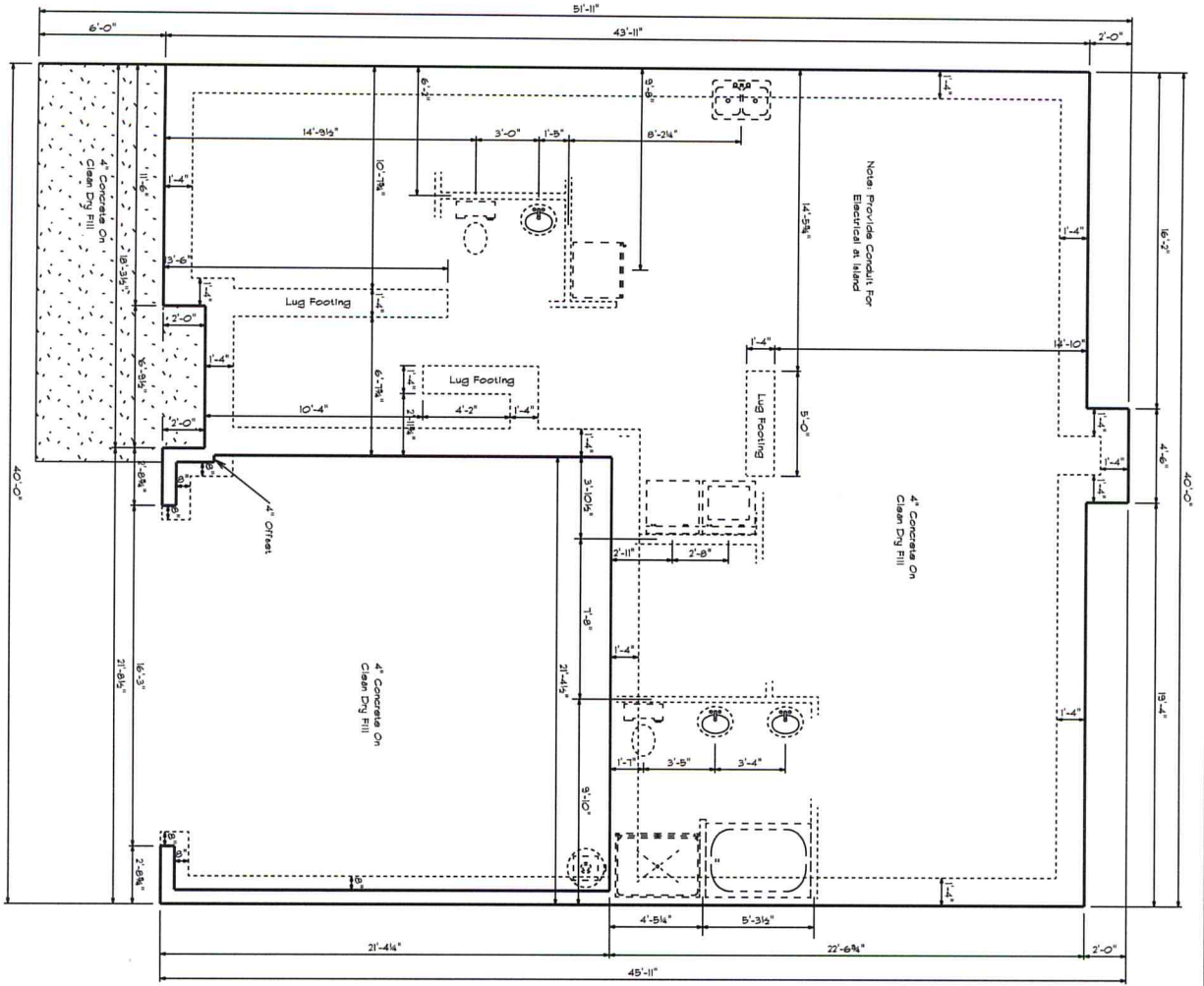
Second Floor Plan

Scale: 1/4" = 1'-0"



Second Floor Openings

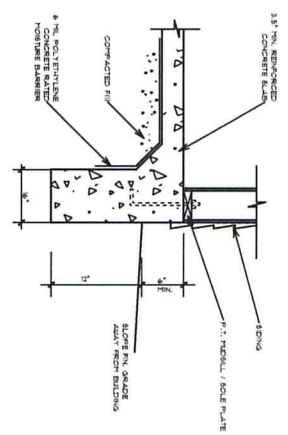
PRODUCT CODE	SIZE	HINDE DIRECTION	COUNT	REQ. WIDTH
1-8 DOOR UNIT	1'-8"	R	1	1'-0"
2-4 DOOR UNIT	2'-4"	L	1	2'-6"
2-6 DOOR UNIT	2'-6"	R	2	3'-8"
3-0 DOOR UNIT	3'-0"	LR	2	3'-2"
20x20 Twin window	4'-0" x 3'-0"	NA	1	4'-0"
28x50 Single window	2'-8" x 5'-0"	N	1	2'-8"
28x50 Twin window	5'-4" x 5'-0"	NA	2	5'-4"



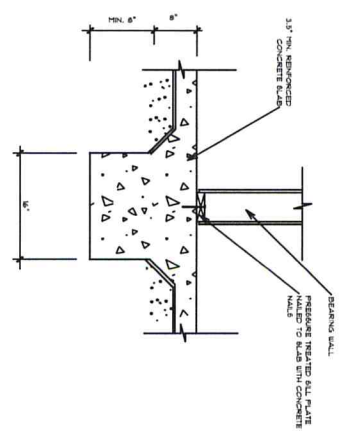
Foundation Plan

Scale: 1/4" = 1'-0"

TURN-DOWN FOOTING DETAIL



INTEGRAL SLAB FOOTING DETAIL AT BEARING WALL



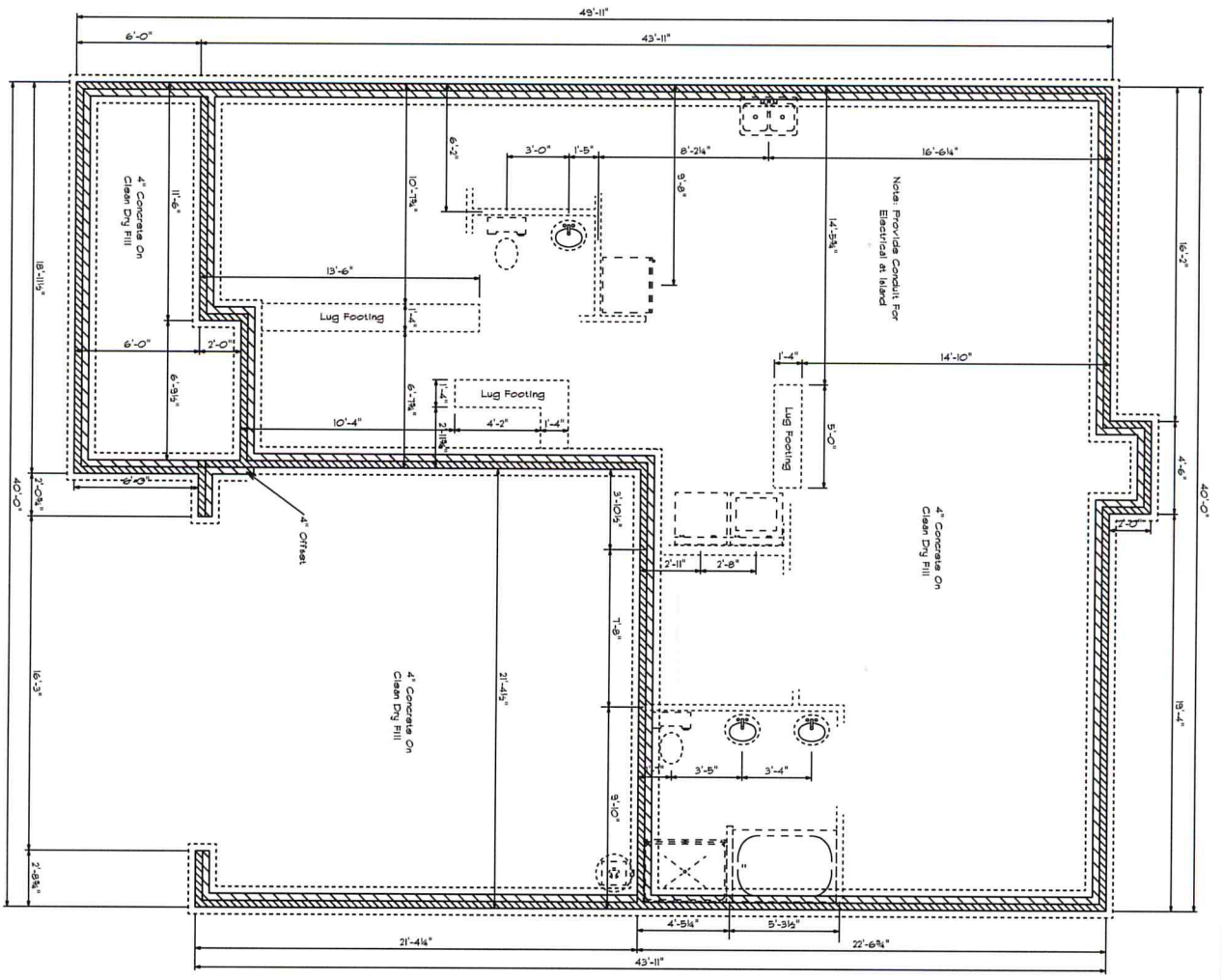
BBH-2034

The Appleton

SCALE 1/4"
DRAWN BY
APPROVED

DATE Thursday, November 7, 2013
REVISED
DRAWING*

Base Designs
 2121 Chimney Pt.
 Linden N.C. 28356
 910-864-9310

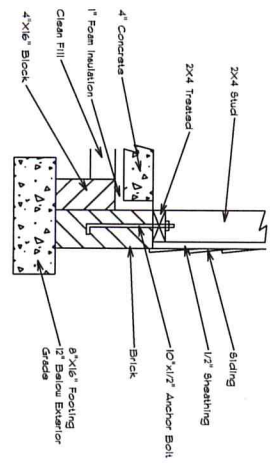


Foundation Plan

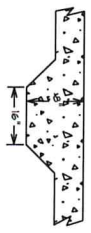
Scale: 1/4" = 1'-0"

Foundation Detail

Sliding



Lug Footing Detail



BBH-2034

The Appleton

SCALE 1/4"
 DRAWN BY
 APPROVED

DATE Thursday, November 7, 2013
 REVISED
 DRAWING#

Base Design
 2121 Chimney Pt.
 Linden N.C. 28356
 910-864-9310

