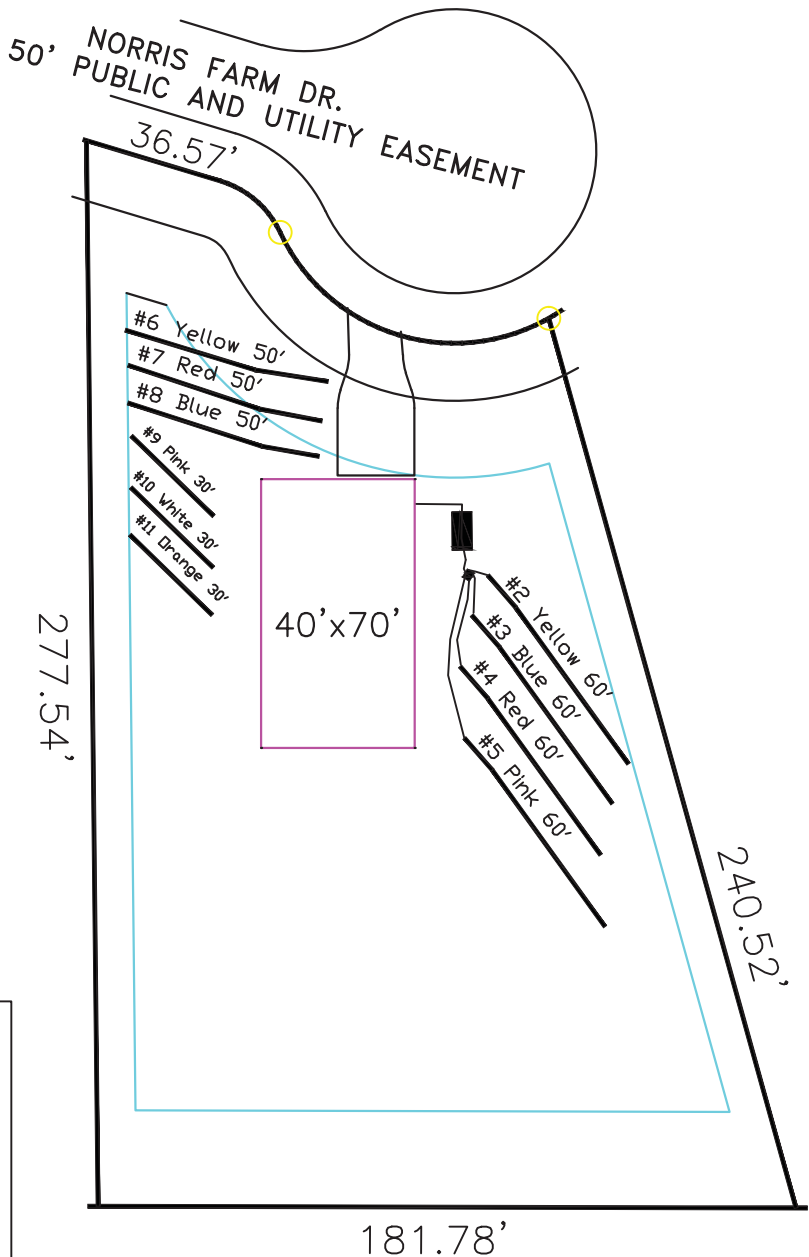


Norris Farm 3-Bedroom Septic Proposal Lot #14

14

0.844 AC.
36779 SF



System: Gravity to D-Box
 Lines: 2-5 (240')
 0.4 LTAR
 18" Trench Bottom
 Accepted Status System
 Repair: Pressure Manifold
 Lines: 6-11 (240')
 0.4 LTAR
 18" Trench Bottom
 Accepted Status System

GRAPHIC SCALE
1" = 50'



Adams
Soil Consulting
919-414-6761
Job #574