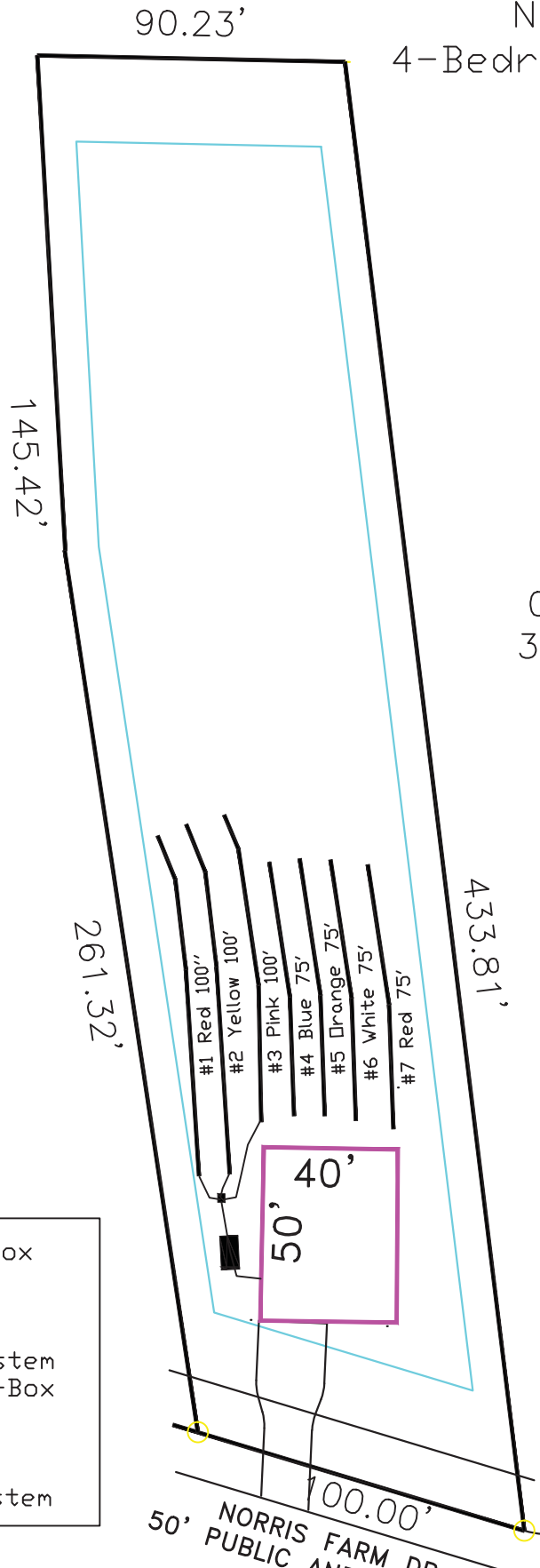


Norris Farm  
4-Bedroom Septic Proposal  
Lot #9

9

0.913 AC.  
39778 SF



System: Gravity D-Box  
Lines: 1-3 (300')  
0.4 LTAR  
24" Trench Bottom  
Accepted Status System  
Repair: Gravity to D-Box  
Lines: 4-7 (300')  
0.4 LTAR  
24" Trench Bottom  
Accepted Status System

GRAPHIC SCALE  
1" = 50'



Adams  
Soil Consulting  
919-414-6761  
Job #574