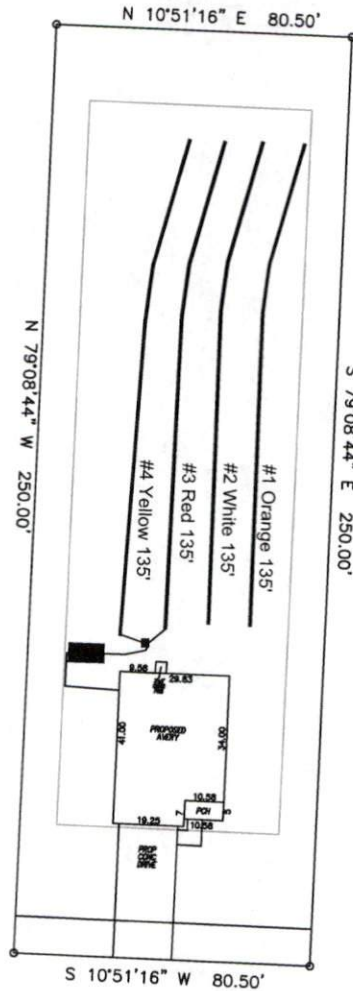


Avery Pond 3-Bedroom Septic Proposal Lot #150

150



Avery Pond Drive

System: Gravity D-Box
 Lines: 3-4 (270')
 0.35 LTAR
 18-24" Trench Bottom
 Accepted Status System
 Repair: Gravity to D-Box
 Lines: 1-2 (270')
 0.35 LTAR
 18-24" Trench Bottom
 Accepted Status System

GRAPHIC SCALE
 1" = 50'



Adams
 Soil Consulting
 919-414-6761
 Job #708

Avery Pond
Lot #150

3-Bedroom Home (360 gal./day)

<u>LINE #</u>	<u>COLOR</u>	<u>BS</u>	<u>HI</u>	<u>FS</u>	<u>ELEVATION</u>	<u>LINE LENGTH</u>	<u>Design Length</u>
TBM		2.0		100.0		<u>in field</u>	<u>installation</u>
INST. 1			102.0				
1	Orange			3.6	98.4	135	135
2	White			3.9	98.1	135	135
3	Red			4	98	135	135
4	Yellow			4.1	97.9	135	135
Total						540	540

System

Lines 3-4

Accepted Status System
EZ-FLOW

Repair

Lines 1-2

Accepted Status System
EZ-FLOW

System Type

Suggested Soil LTAR

0.35

0.35

Total Line Length

270

270

Square Footage

810

810

Proposed Trench Bottom

18-24"

18-24"

Distribution Method

Gravity to D-
Box

Gravity to D-Box