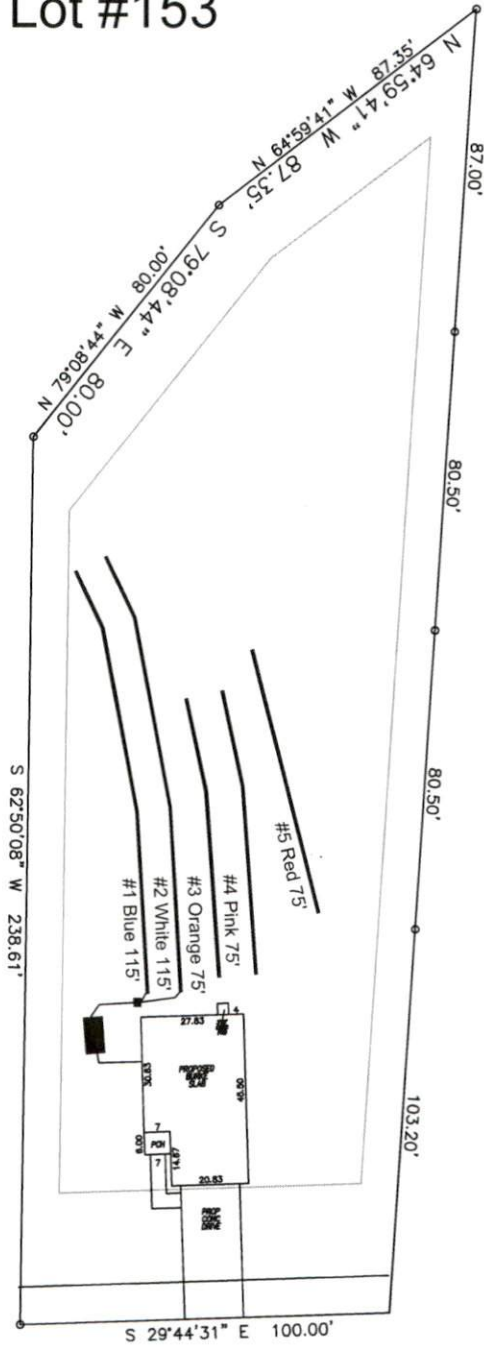


# Avery Pond 3-Bedroom Septic Proposal Lot #153

153



Avery Pond Drive

System: Gravity D-Box  
 Lines: 1-2 (230')  
 0.4 LTAR  
 18-24" Trench Bottom  
 Accepted Status System  
 Repair: Gravity to D-Box  
 Lines: 3-5 (225')  
 0.4 LTAR  
 18-24" Trench Bottom  
 Accepted Status System

GRAPHIC SCALE  
 1" = 50'



Adams  
 Soil Consulting  
 919-414-6761  
 Job #708

**Avery Pond**  
**Lot #153**

3-Bedroom Home (360 gal./day)

<u>LINE #</u>	<u>COLOR</u>	<u>BS</u>	<u>HI</u>	<u>FS</u>	<u>ELEVATION</u>	<u>LINE LENGTH</u>	<u>Design Length</u>
TBM		2.0		100.0		<u>in field</u>	<u>installation</u>
INST. 1			102.0				
1	Blue			4.2	97.8	115	115
2	White			4.3	97.7	135	115
3	Orange			4.4	97.6	105	75
4	Pink			4.6	97.4	115	75
5	Red			5	97	97	75
6	Yellow			5.3	96.7	80	not used
Total						647	455

	<u>System</u>	<u>Repair</u>
	Lines 1-2	Lines 3-5
<b>System Type</b>	Accepted Status System	Accepted Status System
	EZ-FLOW	EZ-FLOW
Suggested Soil LTAR	0.40	0.40
<b>Total Line Length</b>	230	225
<b>Square Footage</b>	690	675
<b>Proposed Trench Bottom</b>	18-24"	18-24"
<b>Distribution Method</b>	Gravity to D-Box	Gravity to D-Box