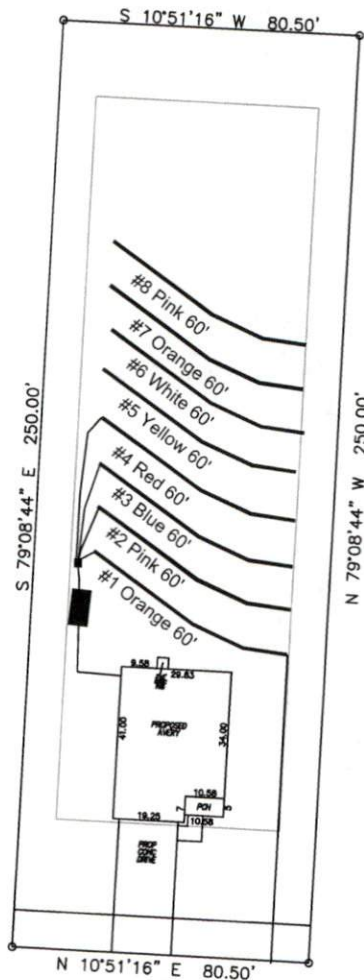


Avery Pond 3-Bedroom Septic Proposal Lot #134

134



Avery Pond Drive

System: Gravity D-Box
 Lines: 1-4 (240')
 0.4 LTAR
 24" Trench Bottom
 Accepted Status System
 Repair: Gravity to D-Box
 Lines: 5-8 (240')
 0.4 LTAR
 24" Trench Bottom
 Accepted Status System

GRAPHIC SCALE
 1" = 50'



Adams
 Soil Consulting
 919-414-6761
 Job #708

Avery Pond

Lot #134

3-Bedroom Home (360 gal./day)

<u>LINE #</u>	<u>COLOR</u>	<u>BS</u>	<u>HI</u>	<u>FS</u>	<u>ELEVATION</u>	<u>LINE LENGTH</u>	<u>Design Length</u>
TBM		2.0		100.0		<u>in field</u>	<u>installation</u>
INST. 1			102.0				
1	Orange			2.5	99.5	65	60
2	Pink			3	99	65	60
3	Blue			3.5	98.5	65	60
4	Red			4	98	65	60
5	Yellow			4.6	97.4	65	60
6	White			5.1	96.9	65	60
7	Orange			5.7	96.3	65	60
8	Pink			6.4	95.6	65	60
Total						390	360

	<u>System</u>	<u>Repair</u>
	Lines 1-4	Lines 5-8
System Type	Accepted Status System EZ-FLOW	Accepted Status System EZ-FLOW
Suggested Soil LTAR	0.40	0.40
Total Line Length	240	240
Square Footage	720	720
Proposed Trench Bottom	24"	24"
Distribution Method	Gravity to D-Box	Gravity to D-Box