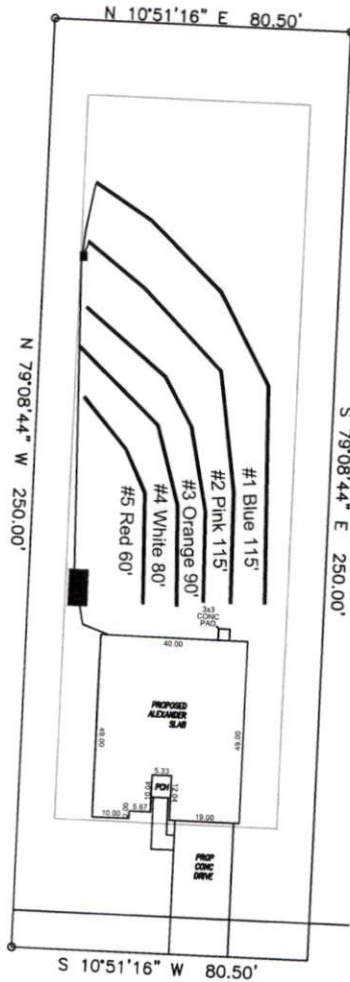


Avery Pond 3-Bedroom Septic Proposal Lot #151

151



Avery Pond Drive

System: Gravity D-Box
 Lines: 1-2 (230')
 0.4 LTAR
 18-24" Trench Bottom
 Accepted Status System
 Repair: Gravity to D-Box
 Lines: 3-5 (230')
 0.4 LTAR
 18-24" Trench Bottom
 Accepted Status System

GRAPHIC SCALE
 1" = 50'



Adams
 Soil Consulting
 919-414-6761
 Job #708

Avery Pond
Lot #151

3-Bedroom Home (360 gal./day)

<u>LINE #</u>	<u>COLOR</u>	<u>BS</u>	<u>HI</u>	<u>FS</u>	<u>ELEVATION</u>	<u>LINE LENGTH</u>	<u>Design Length</u>
TBM		2.0		100.0		<u>in field</u>	<u>installation</u>
INST. 1			102.0				
1	Blue			3.3	98.7	135	115
2	Pink			3.2	98.8	115	115
3	Orange			3.5	98.5	100	90
4	White			3.3	98.7	82	80
5	Red			3.2	98.8	62	60
Total						494	460

	<u>System</u>	<u>Repair</u>
	Lines 1-2	Lines 3-5
System Type	Accepted Status System EZ-FLOW	Accepted Status System EZ-FLOW
Suggested Soil LTAR	0.40	0.40
Total Line Length	230	230
Square Footage	690	690
Proposed Trench Bottom	18-24"	18-24"
Distribution Method	Gravity to D-Box	Gravity to serial distribution