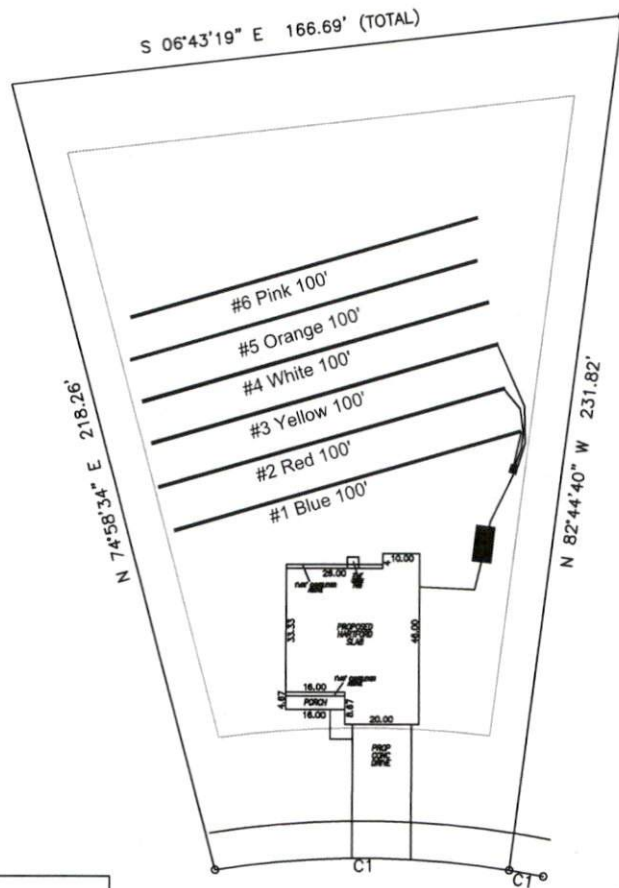


# Avery Pond 4-Bedroom Septic Proposal Lot #131

131



System: Gravity D-Box  
 Lines: 1-3 (300')  
 0.4 LTAR  
 24" Trench Bottom  
 Accepted Status System  
 Repair: Gravity to D-Box  
 Lines: 4-6 (300')  
 0.4 LTAR  
 24" Trench Bottom  
 Accepted Status System

Avery Pond Drive

GRAPHIC SCALE  
1" = 50'



Adams  
Soil Consulting  
919-414-6761  
Job #708

**Avery Pond**  
**Lot #131**

4-Bedroom Home (480 gal./day)

<u>LINE #</u>	<u>COLOR</u>	<u>BS</u>	<u>HI</u>	<u>FS</u>	<u>ELEVATION</u>	<u>LINE LENGTH</u>	<u>Design Length</u>
TBM		2.0		100.0		<u>in field</u>	<u>installation</u>
INST. 1			102.0				
1	Blue			3.5	98.5	100	100
2	Red			3.8	98.2	100	100
3	Yellow			4.2	97.8	100	100
4	White			4.5	97.5	100	100
5	Orange			4.8	97.2	100	100
6	Pink			5.1	96.9	100	100
Total						600	600

	<u>System</u>	<u>Repair</u>
	Lines 1-3	Lines 4-6
<b>System Type</b>	Accepted Status System EZ-FLOW	Accepted Status System EZ-FLOW
Suggested Soil LTAR	0.40	0.40
<b>Total Line Length</b>	300	300
<b>Square Footage</b>	900	900
<b>Proposed Trench Bottom</b>	24"	24"
<b>Distribution Method</b>	Gravity to D-Box	Gravity to D-Box