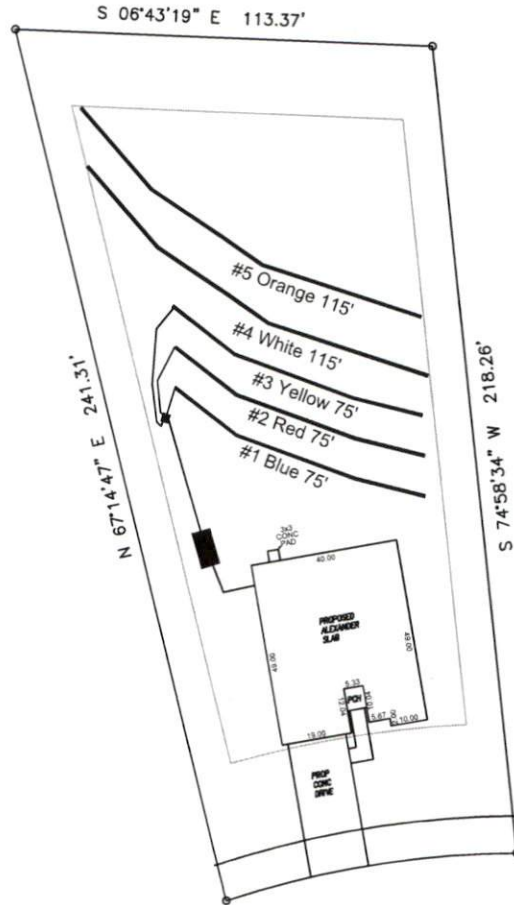


Avery Pond 3-Bedroom Septic Proposal Lot #130

130



Avery Pond Drive

System: Gravity D-Box
 Lines: 1-3 (225')
 0.4 LTAR
 24" Trench Bottom
 Accepted Status System
 Repair: Gravity to D-Box
 Lines: 4-5 (230')
 0.4 LTAR
 24" Trench Bottom
 Accepted Status System

GRAPHIC SCALE
1" = 50'



Adams
 Soil Consulting
 919-414-6761
 Job #708

Avery Pond
Lot #130

3-Bedroom Home (360 gal./day)

<u>LINE #</u>	<u>COLOR</u>	<u>BS</u>	<u>HI</u>	<u>FS</u>	<u>ELEVATION</u>	<u>LINE LENGTH</u>	<u>Design Length</u>
TBM		2.0		100.0		in field	installation
INST. 1			102.0				
1	Blue			3.4	98.6	105	75
2	Red			3.7	98.3	110	75
3	Yellow			4	98	115	75
4	White			4.5	97.5	115	115
5	Orange			4.8	97.2	115	115
Total						455	380

System

Repair

Lines 1-3

Lines 4-5

System Type

Accepted Status System
EZ-FLOW

Accepted Status System
EZ-FLOW

Suggested Soil LTAR

0.40

0.40

Total Line Length

225

130

Square Footage

675

390

Proposed Trench Bottom

24"

24"

Distribution Method

Gravity to D-
Box

Gravity to D-Box