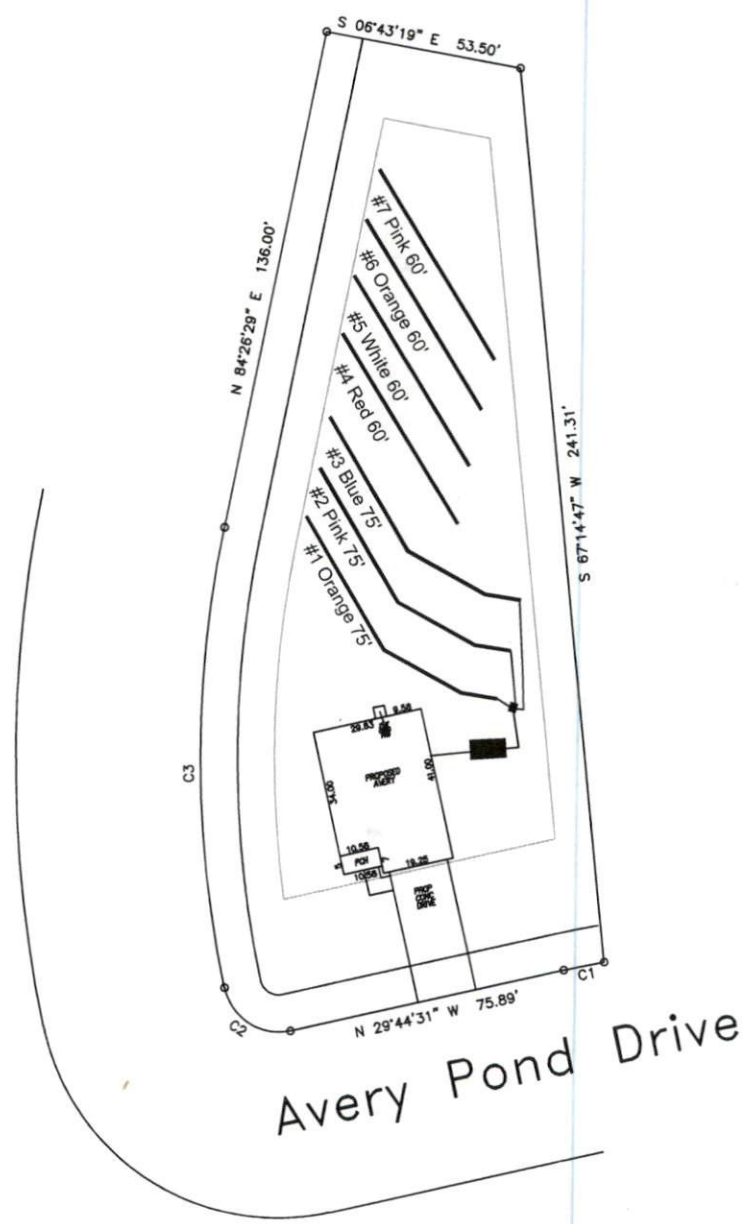


Avery Pond 3-Bedroom Septic Proposal Lot #129

129



System: Gravity D-Box
 Lines: 1-3 (225')
 0.4 LTAR
 24" Trench Bottom
 Accepted Status System
 Repair: Gravity to D-Box
 Lines: 4-7 (240')
 0.4 LTAR
 24" Trench Bottom
 Accepted Status System

GRAPHIC SCALE
 1" = 50'



Adams
 Soil Consulting
 919-414-6761
 Job #708

Avery Pond
Lot #129

3-Bedroom Home (360 gal./day)

<u>LINE #</u>	<u>COLOR</u>	<u>BS</u>	<u>HI</u>	<u>FS</u>	<u>ELEVATION</u>	<u>LINE LENGTH</u>	<u>Design Length</u>
TBM		2.0		100.0		<u>in field</u>	<u>installation</u>
INST. 1			102.0				
1	Orange			2.1	99.9	90	75
2	Pink			2.3	99.7	90	75
3	Blue			2.4	99.6	90	75
4	Red			2.6	99.4	80	60
5	White			2.9	99.1	71	60
6	Orange			3.1	98.9	66	60
7	Pink			3.4	98.6	60	60
Total						457	390

System

Repair

Lines 1-3

Lines 4-7

System Type

Accepted Status System
EZ-FLOW

Accepted Status System
EZ-FLOW

Suggested Soil LTAR

0.40

0.40

Total Line Length

225

240

Square Footage

675

720

Proposed Trench Bottom

24"

24"

Distribution Method

Gravity to D-
Box

Gravity to D-Box