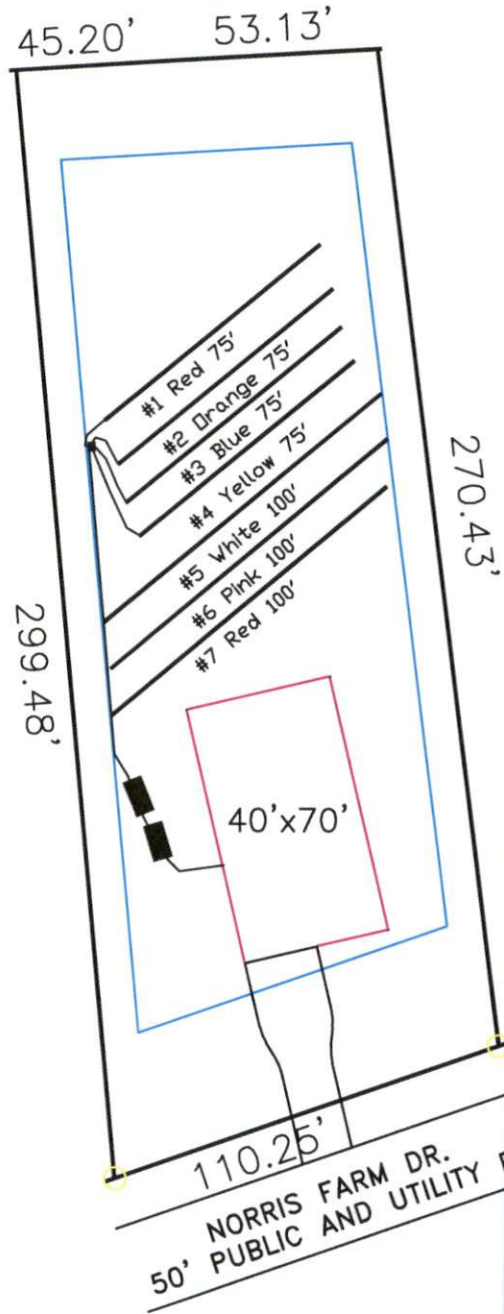


Norris Farm 4-Bedroom Septic Proposal Lot #5

5
 0.673 AC.
 29302 SF



System: Pump to D-Box
 Lines: 1-4 (300')
 0.4 LTAR
 24' Trench Bottom
 Accepted Status System
 Repair: Pump to D-Box
 Lines: 5-7 (300')
 0.4 LTAR
 16' Trench Bottom
 Accepted Status System

GRAPHIC SCALE
 1" = 50'



Adams
 Soil Consulting
 919-414-6761
 Job #574

Norris Farm

Lot #5

4-Bedroom Home (480 gal./day)

<u>LINE #</u>	<u>COLOR</u>	<u>BS</u>	<u>HI</u>	<u>FS</u>	<u>ELEVATION</u>	<u>LINE LENGTH</u>	<u>Design Length</u>
TBM		2.0		100.0		<u>in field</u>	<u>installation</u>
INST. 1			102.0				
1	Red			2.9	99.1	90	75
2	Orange			3.6	98.4	90	75
3	Blue			3.9	98.1	90	75
4	Yellow			4.2	97.8	90	75
5	White			4.3	97.7	100	100
6	Pink			4.4	97.6	100	100
7	Red			4.6	97.4	100	100

System

Lines 1-4

Repair

Lines 5-7

System Type

Accepted Status System

Accepted Status System

Suggested Soil LTAR

0.40

0.40

Total Line Length

300

300

Square Footage

900

900

Proposed Trench Bottom

18-24"

16"

Distribution Method

Pump to D-Box

Pump to D-Box

*A pump tank will be required to dose septic field.