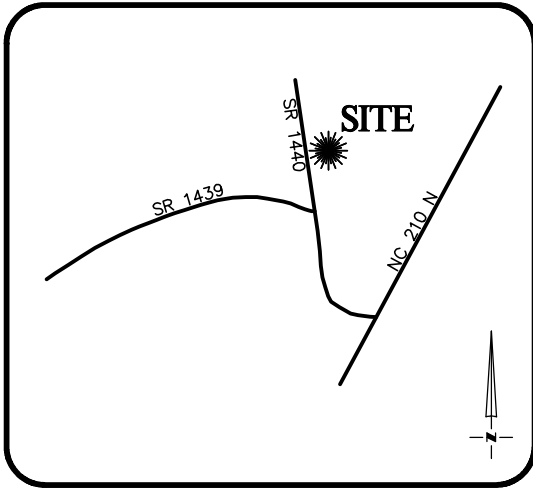


THIS IS TO CERTIFY THAT ON THE 29th DAY OF APRIL 2020 AN ACTUAL SURVEY WAS DONE UNDER MY SUPERVISION OF THE PROPERTY SHOWN HERON, THIS MAP IS NOT INTENDED TO MEET GS 47-30 RECORDING REQUIREMENTS.



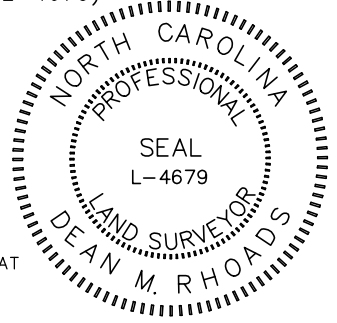
VICINITY MAP
Not To Scale

SIGNED _____

DEAN M. RHOADS, PLS (L-4679)

LEGEND

- E.I.P. EXISTING IRON PIN
- E.C.M. EXISTING CONCRETE MONUMENT
- S.I.P. SET IRON PIN
- P.D.E. PUBLIC DRAINAGE EASEMENT
- S.D.E. STORM DRAINAGE EASEMENT
- P.U.E. PUBLIC UTILITY EASEMENT
- S.S.E. SANITARY SEWER EASEMENT
- F.P.E. FLOOD PROTECTION ELEVATION
- CLOSURE EXCEEDS 1 INCH in 10,000'
- SETBACK LINE
- PROPERTY LINE
- - - ADJOINER PROPERTY LINE BY DEED OR PLAT

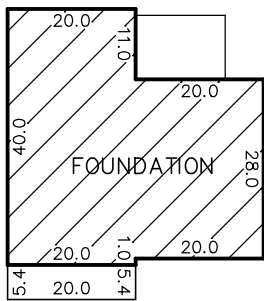
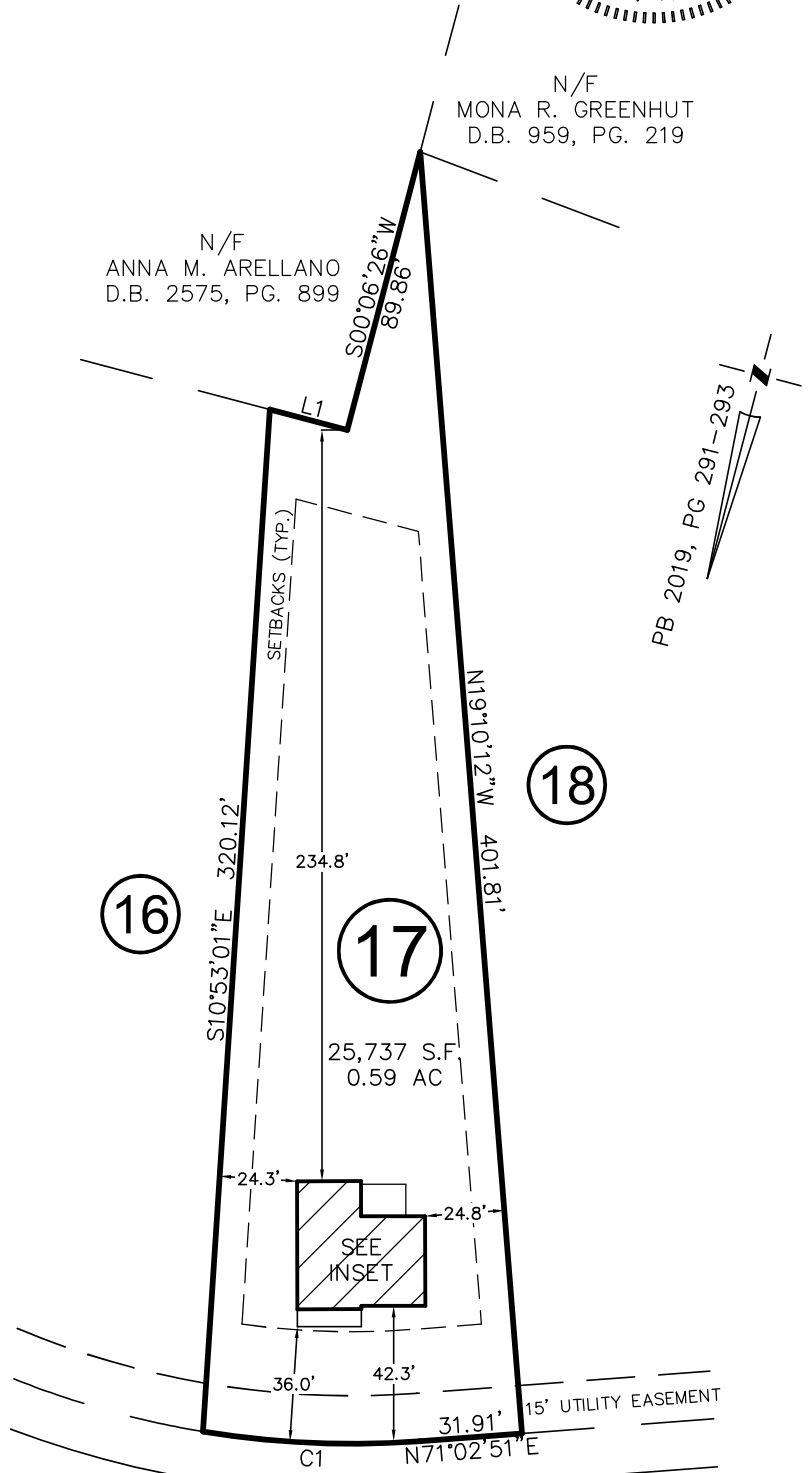


SETBACKS: (PB 2019 PG 291)

- FRONT - 35'
- SIDE - 10'
- REAR - 25'
- CORNER - 20'

N/F
MONA R. GREENHUT
D.B. 959, PG. 219

N/F
ANNA M. ARELLANO
D.B. 2575, PG. 899



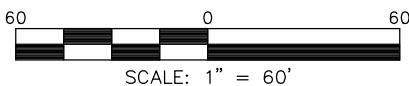
INSET
N.T.S.

LINE	BEARING	DISTANCE		
L1	N89°50'49"W	25.00'		
CURVE	RADIUS	ARC LENGTH	CH LENGTH	CH BEARING
C1	285.00'	68.16'	68.00'	S77°53'57"W

THIS PROPERTY MAY BE SUBJECT TO ANY AND ALL APPLICABLE DEED RESTRICTIONS, EASEMENTS, RIGHT-OF-WAY, UTILITIES AND RESTRICTIVE COVENANTS WHICH MAY BE OF RECORD OR IMPLIED

NORRIS FARM DRIVE

50' PUBLIC R/W & UTILITY EASEMENT



RESIDENTIAL LAND SERVICES, PLLC.

1917 Evans Road
Cary, North Carolina 27513
Phone (919) 378-9316
Firm License # P-0873

FOUNDATION SURVEY

FOR
#144 NORRIS FARM DRIVE
LOT 17, NORRIS FARM SUBDIVISION

Black River Township, Harnett County, North Carolina

PROPERTY OF: TRUE HOMES
MAP BOOK 2019 PAGE 291-293 DEED REFERENCE _____

DRAWN BY: S.M.

DATE: APRIL 29, 2020