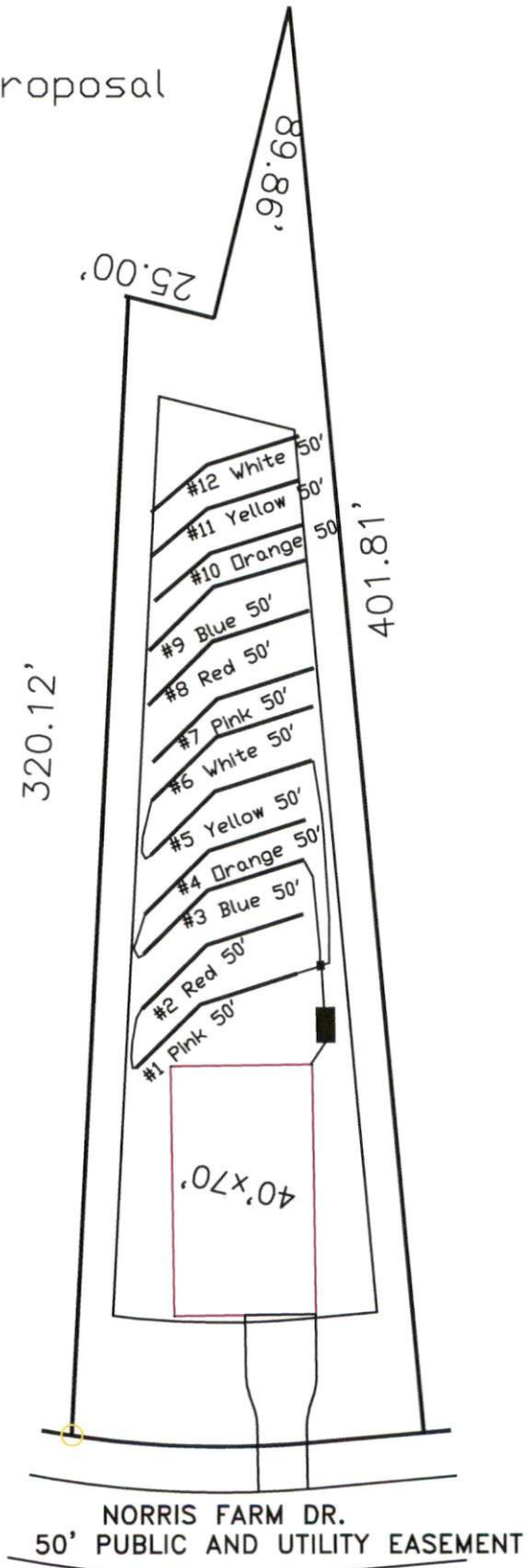


Norris Farm
 4-Bedroom Septic Proposal
 Lot #17

17

0.591 AC.
 25737 SF

System: Gravity to D-Box
 Lines: 1-6 (300')
 0.4 LTAR
 24" Trench Bottom
 Accepted Status System
 Repair: Pressure Manifold
 Lines: 7-12 (300')
 0.4 LTAR
 24" Trench Bottom
 Accepted Status System



GRAPHIC SCALE
 1" = 50'



Adams
 Soil Consulting
 919-414-6761
 Job #574

Norris Farm

Lot #17

4-Bedroom Home (480 gal./day)

<u>LINE #</u>	<u>COLOR</u>	<u>BS</u>	<u>HI</u>	<u>FS</u>	<u>ELEVATION</u>	<u>LINE LENGTH</u>	<u>Design Length</u>
TBM		2.0		100.0		<u>in field</u>	<u>installation</u>
INST. 1			102.0				
1	Pink			1	101	68	50
2	Red			1.5	100.5	65	50
3	Blue			2.3	99.7	60	50
4	Orange			2.8	99.2	58	50
5	Yellow			3.4	98.6	57	50
6	White			3.9	98.1	55	50
7	Pink			4.5	97.5	55	50
8	Red			5.1	96.9	55	50
9	Blue			5.5	96.5	53	50
10	Orange			6.6	95.4	53	50
11	Yellow			6.6	95.4	53	50
12	White			6.9	95.1	50	50

System

Repair

Lines 1-6

Lines 7-12

System Type

Accepted Status System

Accepted Status System

Suggested Soil LTAR

0.40

0.40

Total Line Length

300

300

Square Footage

900

900

Proposed Trench Bottom

24"

20"

Distribution Method

Gravity to D-Box

Gravity to D-Box