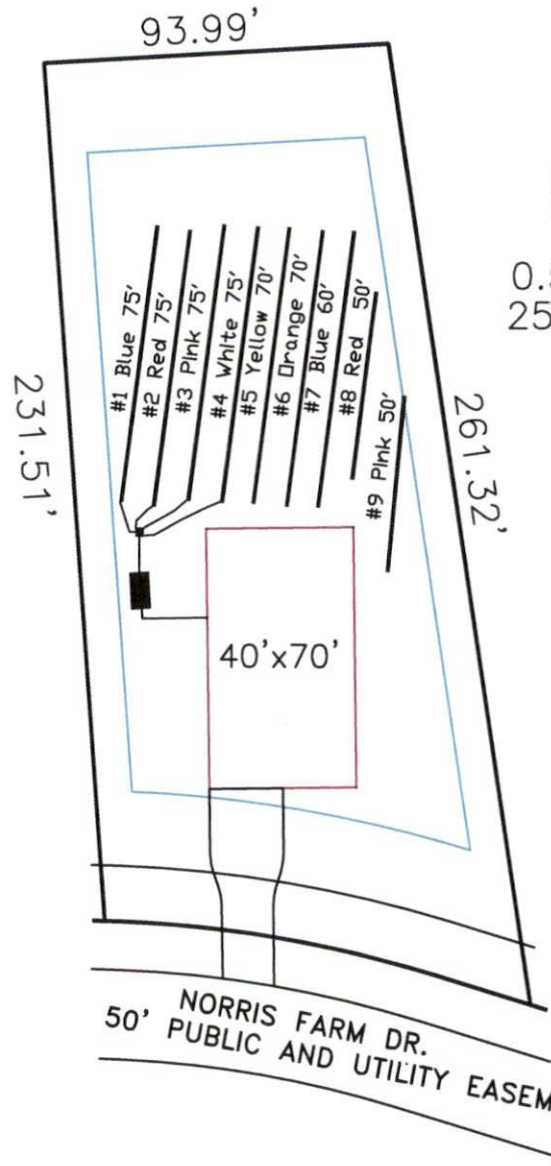


Norris Farm 4-Bedroom Septic Proposal Lot #8



8

0.575 AC.
25043 SF

System: Gravity to D-Box
 Lines: 1-4 (300')
 0.4 LTAR
 18-24" Trench Bottom
 Accepted Status System
 Repair: Pressure Manifold
 Lines: 5-9 (300')
 0.4 LTAR
 18-24" Trench Bottom
 Accepted Status System

GRAPHIC SCALE
1" = 50'



Adams
Soil Consulting
919-414-6761
Job #574

Norris Farm

Lot #8

4-Bedroom Home (480 gal./day)

<u>LINE #</u>	<u>COLOR</u>	<u>BS</u>	<u>HI</u>	<u>FS</u>	<u>ELEVATION</u>	<u>LINE LENGTH</u>	<u>Design Length</u>
TBM		2.0		100.0		<u>in field</u>	<u>installation</u>
INST. 1			102.0				
1	Blue			3.7	98.3	75	75
2	Red			3.9	98.1	86	75
3	Pink			4.3	97.7	123	75
4	White			4.5	97.5	125	75
5	Yellow			4.7	97.3	92	70
6	Orange			4.9	97.1	82	70
7	Blue			5.2	96.8	60	60
8	Red			5.5	96.5	55	50
9	Pink			6.7	95.3	50	50

	<u>System</u> Lines 1-4	<u>Repair</u> Lines 5-9
System Type	Accepted Status System	Accepted Status System
Suggested Soil LTAR	0.40	0.40
Total Line Length	300	300
Square Footage	900	900
Proposed Trench Bottom	18-24"	18-24"
Distribution Method	Gravity to D-Box	Pressure Manifold