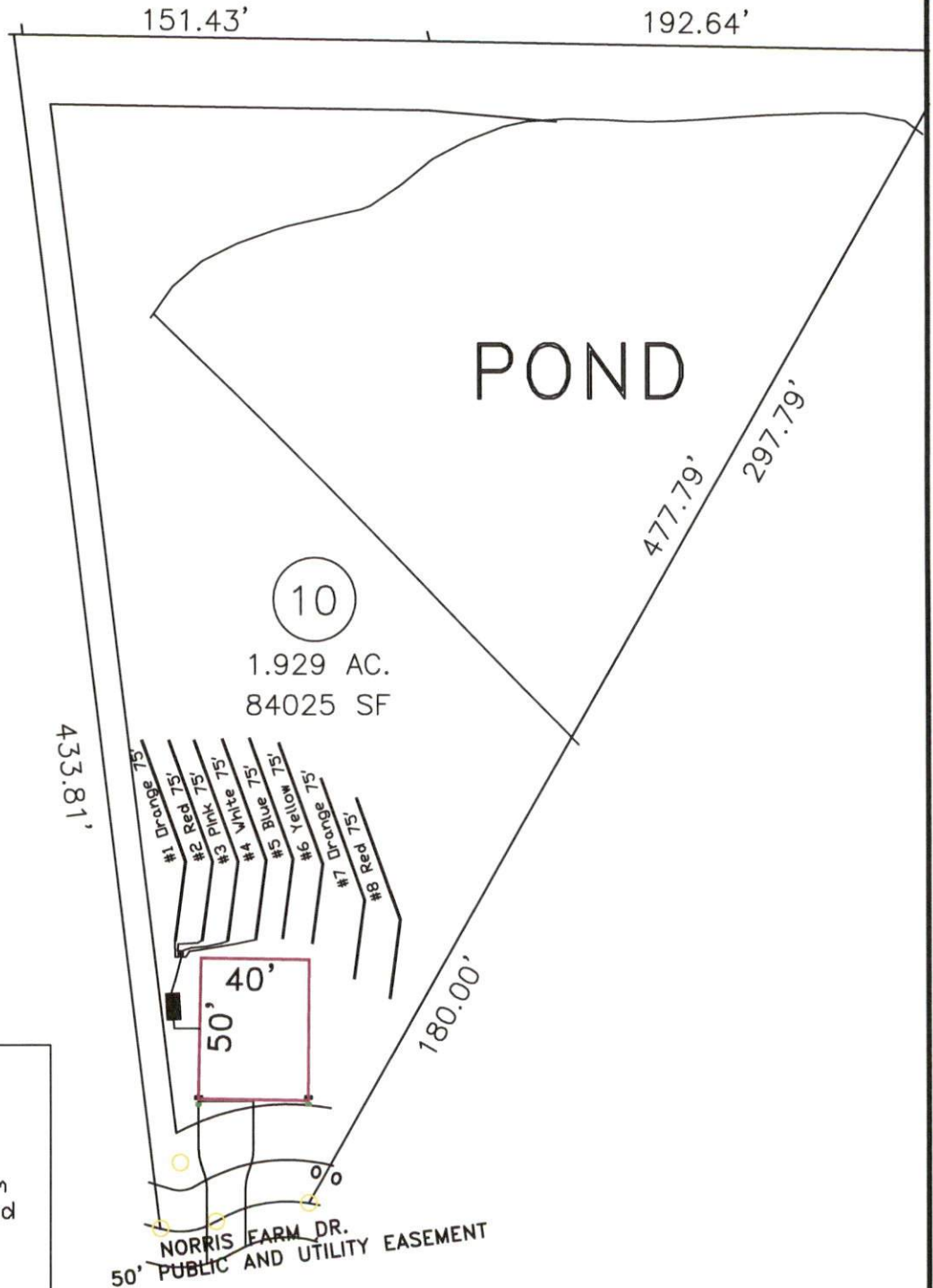


Norris Farm
 4-Bedroom Septic Proposal
 Lot #10



System: Gravity D-Box
 Lines: 1-4 (300')
 0.4 LTAR
 24" Trench Bottom
 Accepted Status System
 Repair: Pressure Manifold
 Lines: 5-8 (300')
 0.4 LTAR
 24" Trench Bottom
 Accepted Status System

GRAPHIC SCALE
 1" = 60'



Adams
 Soil Consulting
 919-414-6761
 Job #574

Norris Farm

Lot #10

4-Bedroom Home (480 gal./day)

<u>LINE #</u>	<u>COLOR</u>	<u>BS</u>	<u>HI</u>	<u>FS</u>	<u>ELEVATION</u>	<u>LINE LENGTH</u>	<u>Design Length</u>
TBM		2.0		100.0		<u>in field</u>	<u>installation</u>
INST. 1			102.0				
1	Orange			3.9	98.1	75	75
2	Red			4.2	97.8	75	75
3	Pink			4.4	97.6	75	75
4	White			4.8	97.2	75	75
5	Blue			5.1	96.9	75	75
6	Yellow			5.2	96.8	75	75
7	Orange			5.6	96.4	75	75
8	Red			5.9	96.1	75	75

	<u>System</u> Lines 1-4	<u>Repair</u> Lines 5-8
System Type	Accepted Status System	Accepted Status System
Suggested Soil LTAR	0.40	0.40
Total Line Length	300	300
Square Footage	900	900
Proposed Trench Bottom	18-24"	18-24"
Distribution Method	Gravity to D-Box	Gravity to D-Box