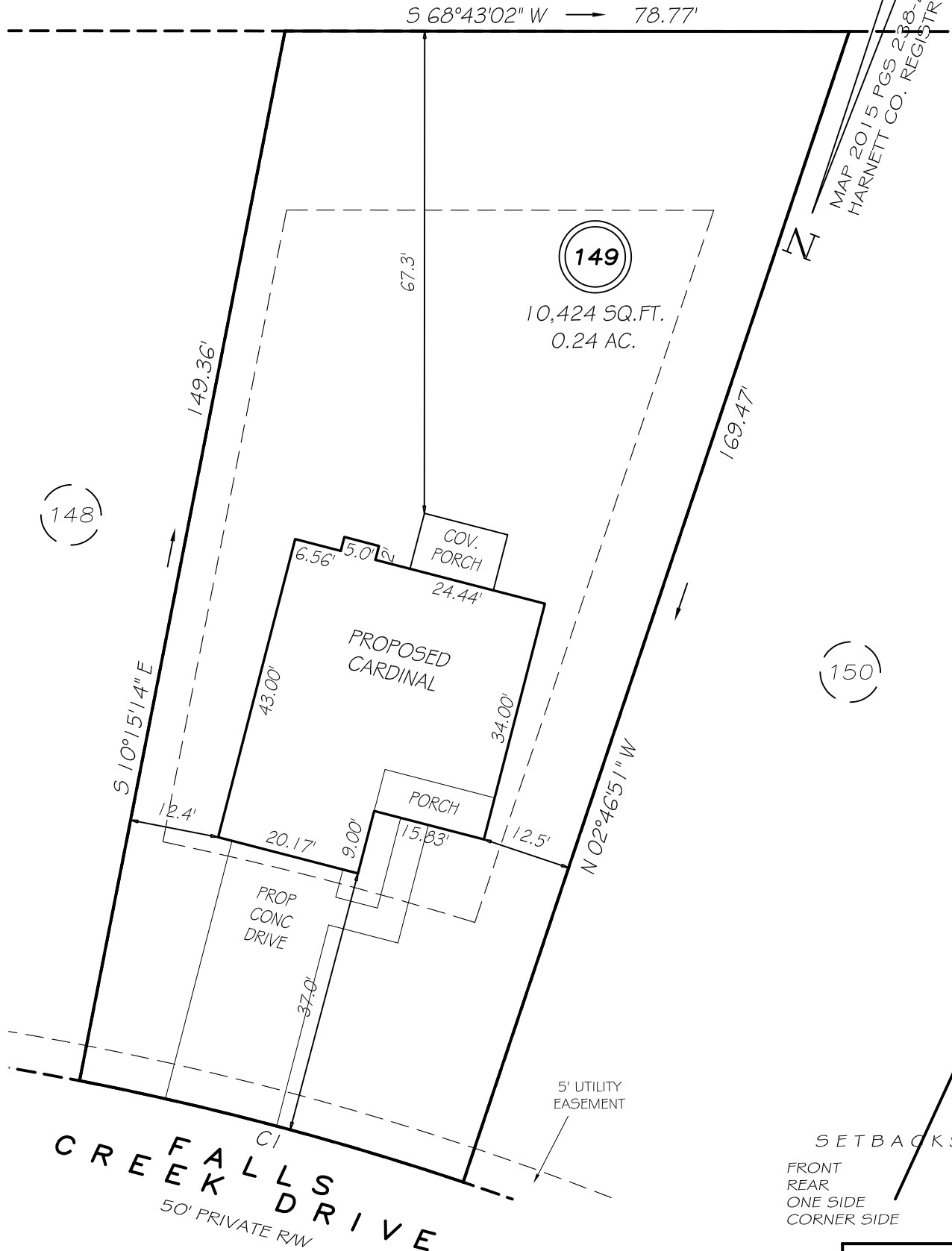


I, MICHAEL P. GRIFFIN, certify that under my direction and supervision this map was drawn from an actual field survey; that the error of closure of the survey as calculated by coordinates is 1: 10,000+; that the area shown hereon was calculated by coordinates.

Witness my hand and seal this day of MONTH 2019.

UNITED STATES OF AMERICA  
C/O US ARMY CORPS OF ENGINEERS  
PIN 0505-80-0917  
DB 1184 PG 403

MAP 2015 FGS 238-239, 258-259  
HARNETT CO. REGISTRY

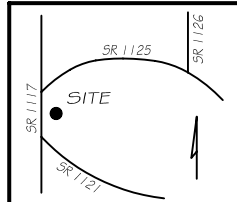


R=425.00' L=55.43' N83°28'57"E 55.39'

**PRELIMINARY**  
NOT FOR RECORDATION,  
SALES OR CONVEYANCE

**LEGEND**

EIP	EXISTING IRON PIPE	FES	FLARED END SECTION
IPS	IRON PIPE SET	WM	WATER METER
R/W	RIGHT OF WAY	CO	CLEAN OUT
N/F	NOW OR FORMERLY	FH	FIRE HYDRANT
EIS	EXISTING IRON STAKE	CB	CATCH BASIN



**GLS** GRIFFIN LAND SURVEYING, INC.  
P.O. BOX 148  
FUQUAY-VARINA, NC 27526  
(919) - 567 - 1963

**PLOT PLAN**  
FOR  
**H & H HOMES**  
**ANDERSON CREEK CLUB**  
**LOT 149**  
FALLS CREEK DRIVE  
NORTH CAROLINA  
HARNETT COUNTY ANDERSON CREEK TOWNSHIP

DRAWN BY NMF

DATE 5/28/19

CHECKED BY MPG

SCALE 1" = 20'