

This layout and associated materials list has been prepared based on project plans and/or information provided to Builders FirstSource (BFS). It remains the responsibility of the builder, architect, designer, or other responsible persons to review this information to assure that it is appropriate, accurate, complete and complies with applicable building codes.

- GENERAL NOTES:**
- 1.) READ THE INSTALLATION GUIDE BEFORE FRAMING.
  - 2.) ALL WALLS SHOWN ARE LOAD BEARING UNLESS NOTED OTHERWISE. WALLS NOT SHOWN ARE CONSIDERED NON-LOAD BEARING.
  - 3.) UNLESS STATED OTHERWISE ALL CEILING & ROOF LOADS BRACE DIRECTLY TO LOAD BEARING WALLS SUPPORTED BY FOUNDATION.
  - 4.) CONTACT BUILDERS FIRSTSOURCE BEFORE MAKING ANY ALTERATIONS OR ADJUSTMENTS...FAILURE TO DO SO MAY RESULT IN COSTLY REPAIRS.

H&H HOMES

JESSAMINE A R

2ND FLOOR EWP PLACEMENT PLAN

Builders FirstSource, Central Carolina Markets

DRAWN BY: AJ Napier

DATE: 4/29/2019

JOB NUMBER:

SCALE: NTS

MINIMUM DESIGN DATA

LIVE LOAD 40 PSF  
DEAD LOAD 10 PSF

TOTAL LOAD 50 PSF

DOL = 100%

DEFLECTION CRITERIA  
L/480 (MINIMUM)

ARCHITECTURAL PLAN DATE  
**06/02/16**

REVISED ARCH. PLAN DATE  
**XX-XX-XX**

**SD040519**

Sheet  
1 of 1

**F05** 23/32" min. plywood/OSB or rimboard closure.  
Nail with 8d nails into each flange.  
BCI® joist blocking required for cantilever.

**F06** Load bearing wall above (stacked over wall below).  
BCI® Joist Blocking. See Boise literature for vertical load capacity.

**F07** See Boise literature for vertical load capacity.  
Boise Rimboard.  
Nail Boise Rimboard to BCI® joist with 8d nail into each flange.

**F07-A** See Boise literature for vertical load capacity.

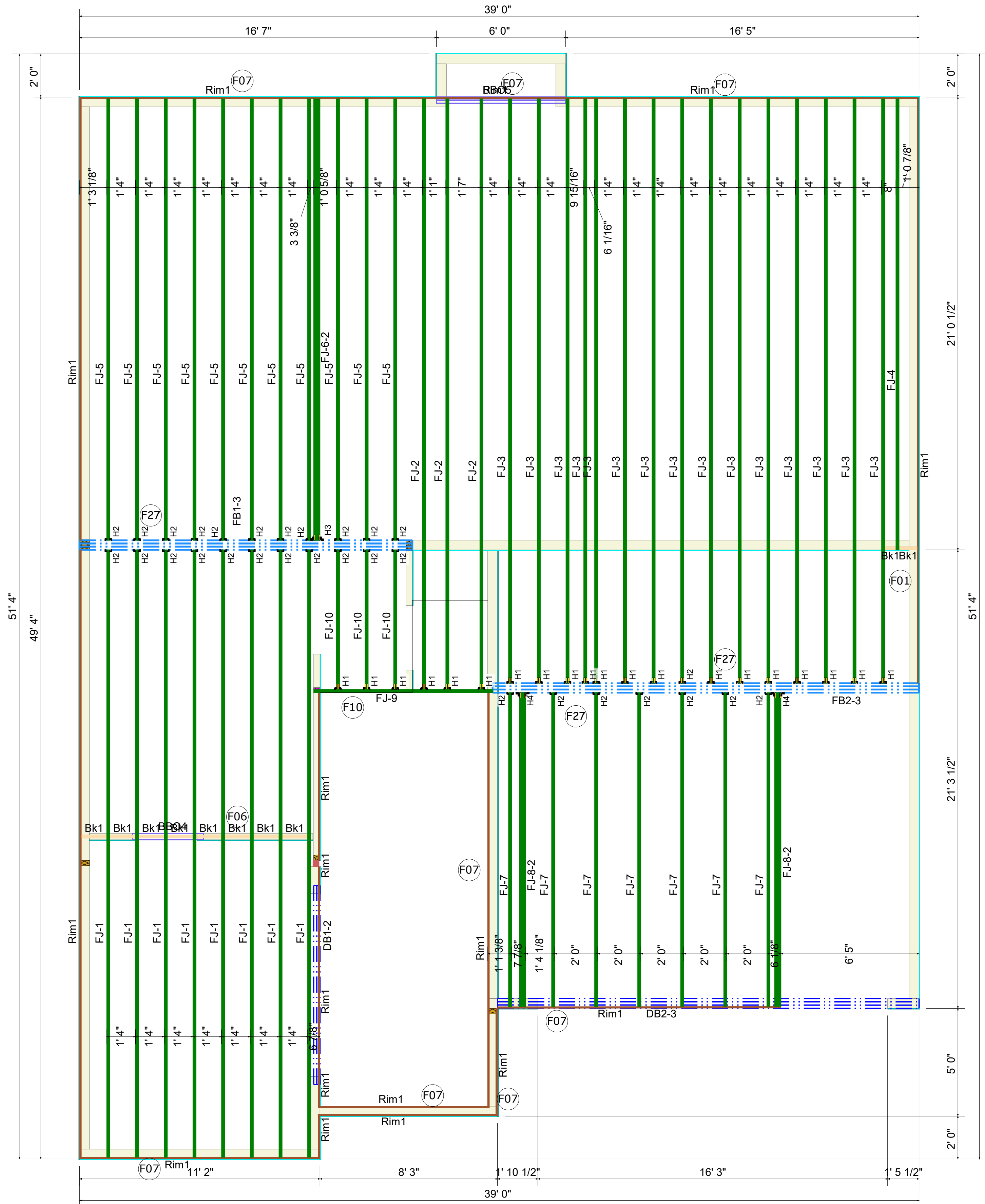
**F08** Solid block all posts from above to bearing below.

**F09** Load bearing wall above (stacked over wall below).  
1/16" gap.  
2x block.

**F10** Backer block (12" wide min.) Nail with 10- 10d nails. Install tight to top flange.  
Joist hanger.  
Backer block required where top mount hanger load exceeds 250 lbs. Install tight to top flange.  
Filler block. Nail with 10-10d nails.

**F27-A** Top Flange Joist hanger.  
Versa-Lam® or Boise GLULAM™ Beam: (1-3/4" Min. width for ITT, THO hangers) (3-1/8" Min. width for all other top flange hangers).

**F16-E** Stiffeners are required on both sides of the web when:  
- Hangers with side nailing.  
- Any hanger with sides not covering the top flange of the joist.  
- Web stiffener nailed with 3" x 2" (10d) nails for 9" joists and 1" x 2" (10d) nails for 14" & 16" joists.  
- For Point Load from above: Install web stiffeners tight against top flange with 1/8" gap between bottom flange.



Products				
PlotID	Length	Product	Plies	Net Qty
FJ-1	28' 2 3/4"	14" BCI® 4500s-1.8	1	8
FJ-2	27' 5 1/4"	14" BCI® 4500s-1.8	1	3
FJ-3	27' 1 3/4"	14" BCI® 4500s-1.8	1	15
FJ-4	20' 11 1/2"	14" BCI® 4500s-1.8	1	1
FJ-5	20' 6 1/4"	14" BCI® 4500s-1.8	1	11
FJ-6-2	20' 6 1/4"	14" BCI® 4500s-1.8	2	2
FJ-7	14' 7"	14" BCI® 4500s-1.8	1	7
FJ-8-2	14' 7"	14" BCI® 4500s-1.8	2	4
FJ-9	8' 3 3/4"	14" BCI® 4500s-1.8	1	1
FJ-10	6' 6"	14" BCI® 4500s-1.8	1	3
DB1-2	10' 0"	1-3/4" x 9-1/4" VERSA-LAM® 2.0 3100 SP	2	2
FB1-3	16' 0"	1-3/4" x 14" VERSA-LAM® 2.0 3100 SP	3	3
DB2-3	20' 0"	1-3/4" x 16" VERSA-LAM® 2.0 3100 SP	3	3
FB2-3	20' 0"	1-3/4" x 18" VERSA-LAM® 2.0 3100 SP	3	3
Rim1	12' 0"	1" x 14" BC RIM BOARD OSB	1	17
Bk1	2' 0"	14" BCI® 4500s-1.8	1	6

Hangers			
PlotID	Qty	Manuf	Product
H1	20	Simpson	HU 14
H2	30	Simpson	IUS 1.81/14
H3	1	Simpson	IUS 3.56/14
H4	2	Simpson	MIU 3.56/14

**JESSAMINE**  
SEAL DATE 04-05-19  
2nd FLOOR EWP PLACEMENT PLAN