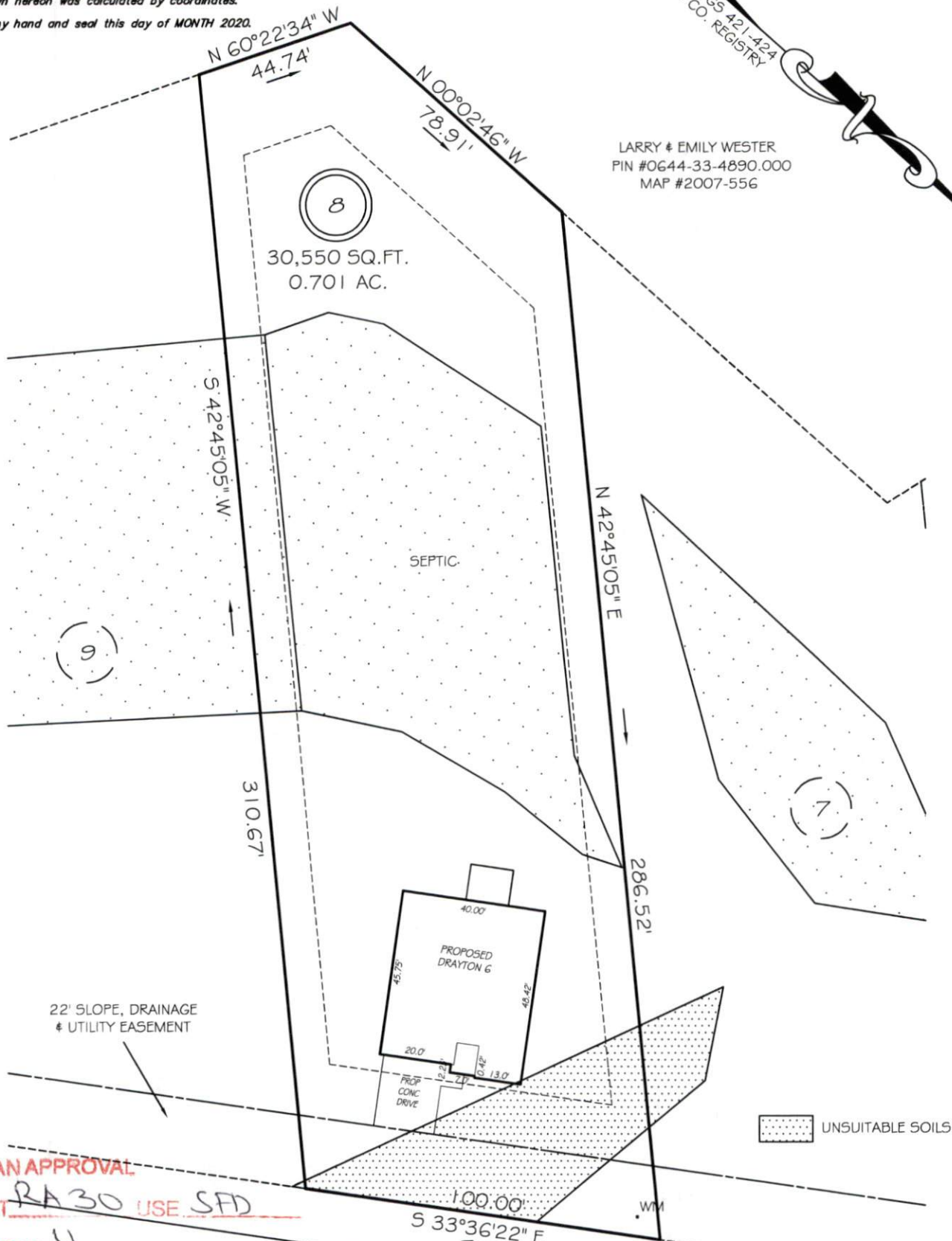


I, MICHAEL P. GRIFFIN, certify that under my direction and supervision this map was drawn from an actual field survey; that the error of closure of the survey as calculated by coordinates is 1: 10,000+; that the area shown hereon was calculated by coordinates.

Witness my hand and seal this day of MONTH 2020.

BK 2019 PGS 421-424
HARNETT CO. REGISTRY

LARRY & EMILY WESTER
PIN #0644-33-4890.000
MAP #2007-556



SITE PLAN APPROVAL
DISTRICT RA 30 USE SFD
#BEDROOMS 4

UNSUITABLE SOILS

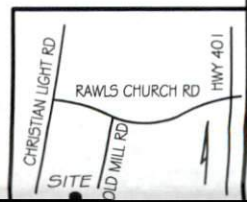
SETBACKS

FRONT	35'
REAR	25'
SIDE	10'
CORNER SIDE	20'

VILLAGE BEND DRIVE
50' PUBLIC RW & UTILITY

LEGEND

EIP	EXISTING IRON PIPE	FES	FLARED END SECTION
IPS	IRON PIPE SET	WM	WATER METER
RAW	RIGHT OF WAY	CO	CLEAN OUT
N/F	NOW OR FORMERLY	FH	FIRE HYDRANT
FIS	EXISTING IRON STAKE	CB	CATCH BASIN



PRELIMINARY

NOT FOR RECORDATION,
SALES OR CONVEYANCE