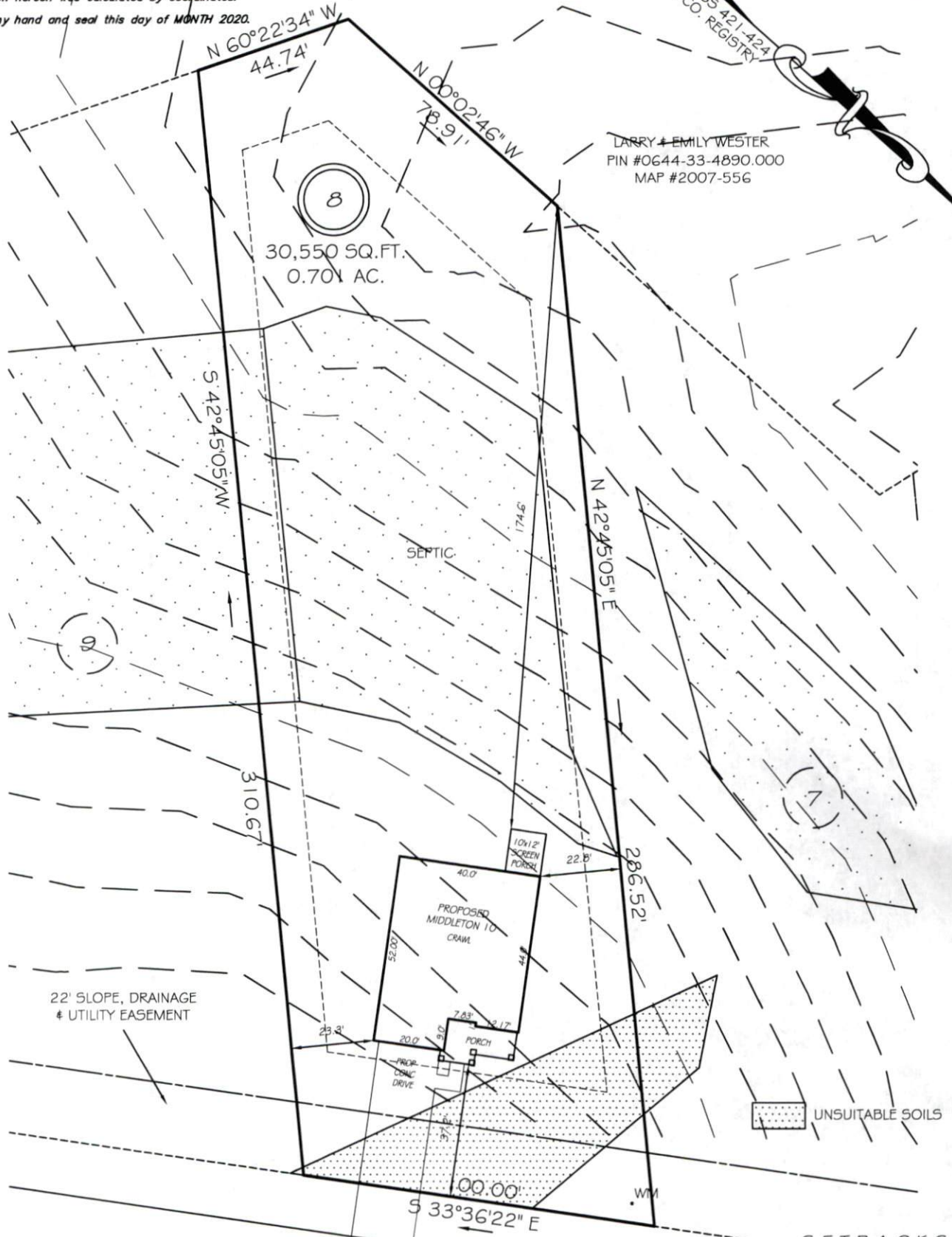


I, MICHAEL P. GRIFFIN, certify that under my direction and supervision this map was drawn from an actual field survey; that the error of closure of the survey as calculated by coordinates is 1: 10,000+; that the area shown hereon was calculated by coordinates.

Witness my hand and seal this day of MONTH 2020.

BK 2019 PGS 421-424  
HARNETT CO. REGISTRY

LARRY & EMILY WESTER  
PIN #0644-33-4890.000  
MAP #2007-556



IMPERVIOUS AREAS

HOUSE	2224 SQ. FT.
DRIVE & WALKS	746 SQ. FT.
PATIO	000 SQ. FT.
<b>TOTAL</b>	<b>2970 SQ. FT.</b>
ALLOWED	3250 SQ. FT.

REVISION: NEW PLANS 4/20/20

**PRELIMINARY**  
NOT FOR RECORDATION,  
SALES OR CONVEYANCE

**LEGEND**

EIP	EXISTING IRON PIPE	FES	FLARED END SECTION
IPS	IRON PIPE SET	WM	WATER METER
R/W	RIGHT OF WAY	CO	CLEAN OUT
N/F	NOW OR FORMERLY	FB	FIRE HYDRANT
EIS	EXISTING IRON STAKE	CB	CATCH BASIN

