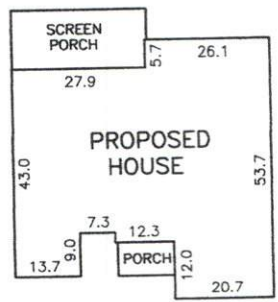


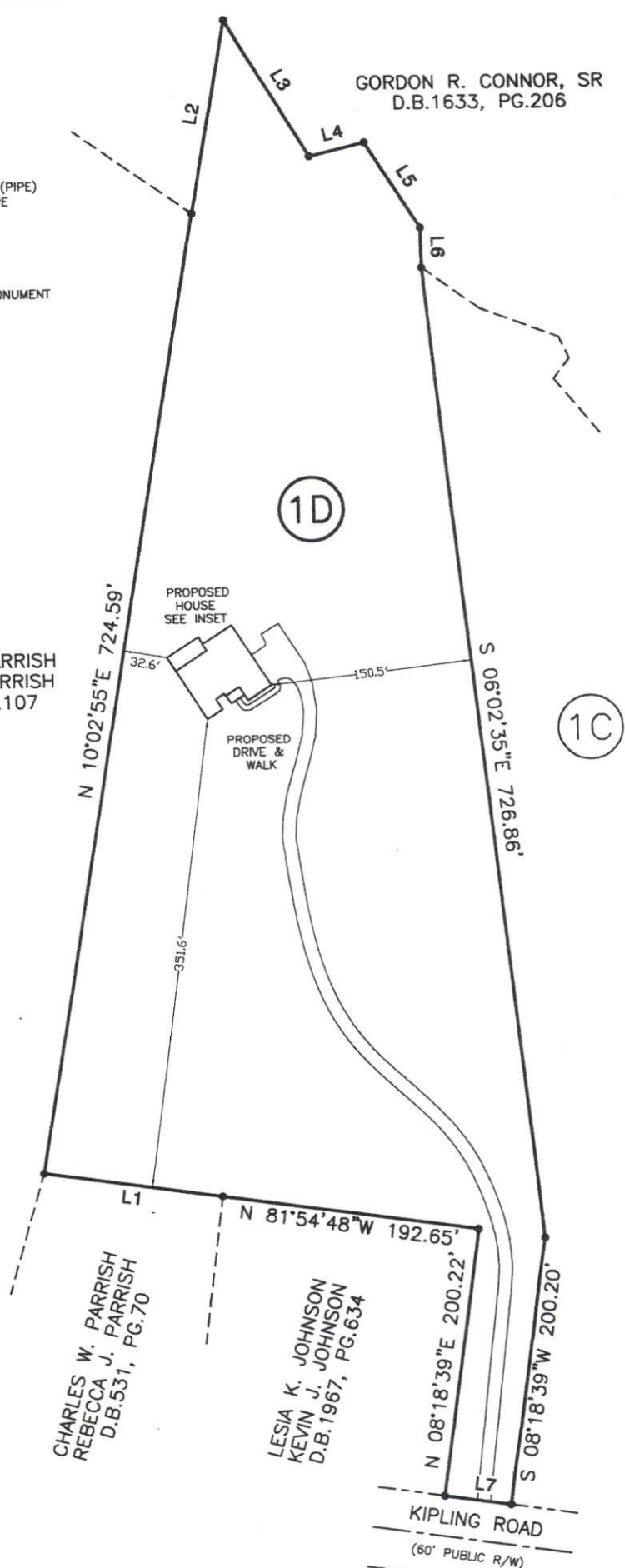
- LEGEND**
- NTS NOT TO SCALE
 - EIP EXISTING IRON PIPE
 - PP POWER POLE
 - W/M WATER METER
 - TB TELEPHONE BOX
 - IPS IRON PIPE SET
 - CP&L TRANSFORMER
 - CATV CABLE TV BOX
 - L POLE LIGHT POLE
 - OHPL OVERHEAD POWER LINE
 - F.E.S. FLARED END SECTION (PIPE)
 - RCP REINFORCED CONC. PIPE
 - B.O.C. BACK OF CURB
 - F.H. FIRE HYDRANT
 - C/O SEWER CLEAN OUT
 - EIS EXISTING IRON STAKE
 - M.H. MANHOLE
 - ECM EXISTING CONCRETE MONUMENT
 - P.K. PARKER KALON NAIL

GORDON R. CONNOR, SR
D.B.1633, PG.206



INSET (NTS)

CHARLES W. PARRISH
REBECCA J. PARRISH
D.B.2949, PG.107



SITE PLAN APPROVAL

DISTRICT R200 USE SFD

BEDROOM 4

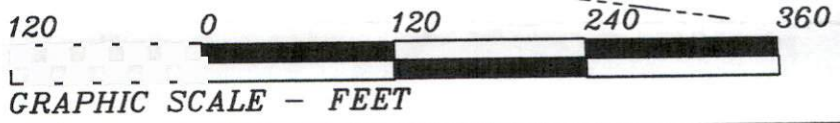
2/3/2021

N.C. GRID NORTH, NAD 83
(REF: M.B.2018, PG.36)

Course	Bearing	Distance
L1	N 81°55'21" W	135.00'
L2	N 09°56'31" E	147.70'
L3	S 31°10'20" E	121.37'
L4	N 76°20'35" E	42.27'
L5	S 32°10'51" E	77.21'
L6	S 00°50'29" E	29.97'
L7	N 81°56'59" W	50.00'

NOTE: SHOWN IS LOT 1D OF
THOMAS & BRENDA TALTON S/D
REF: M.B.2018, PG.36

AREA = 5.074 ACRES
450 KIPLING ROAD



PRELIMINARY PLOT PLAN FOR: