

APPROVED

Limited building only review
Permit holder responsible for
full compliance with the code

NOTICE TO CONTRACTOR
All construction must comply with current NC Building Codes
and is subject to field inspection and verification.

02/13/2020

See notes on foundation page



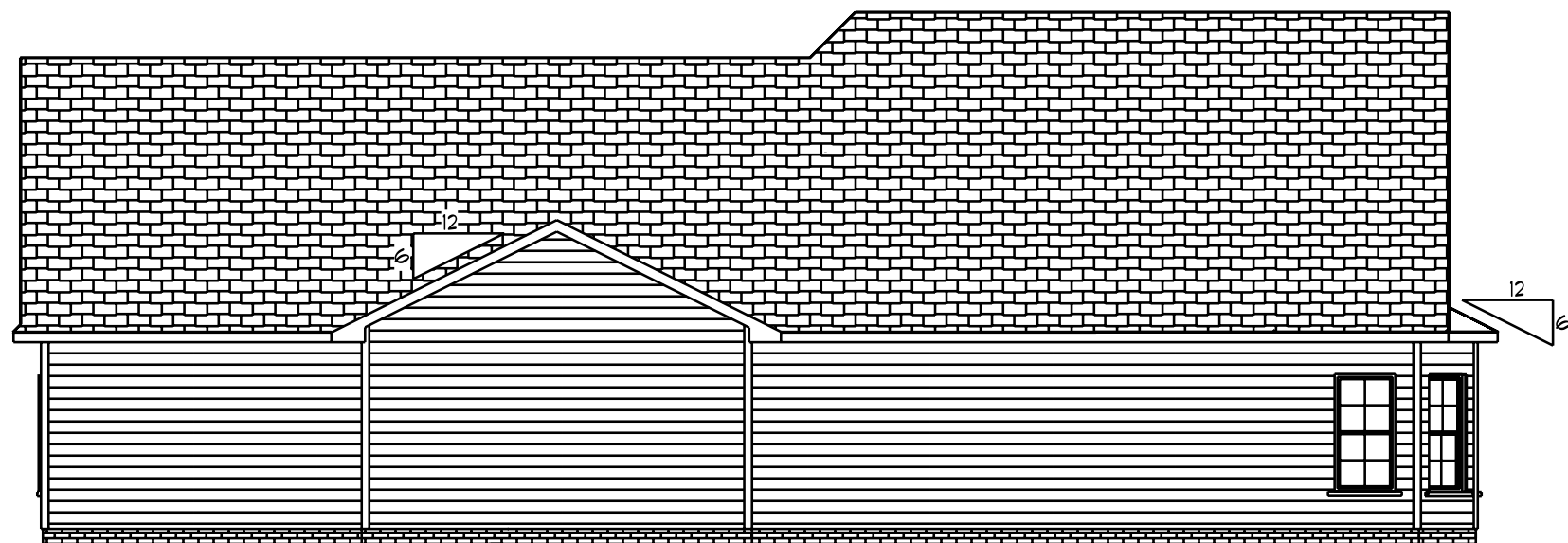
Front Elevation

Scale: 1/4" = 1'0"



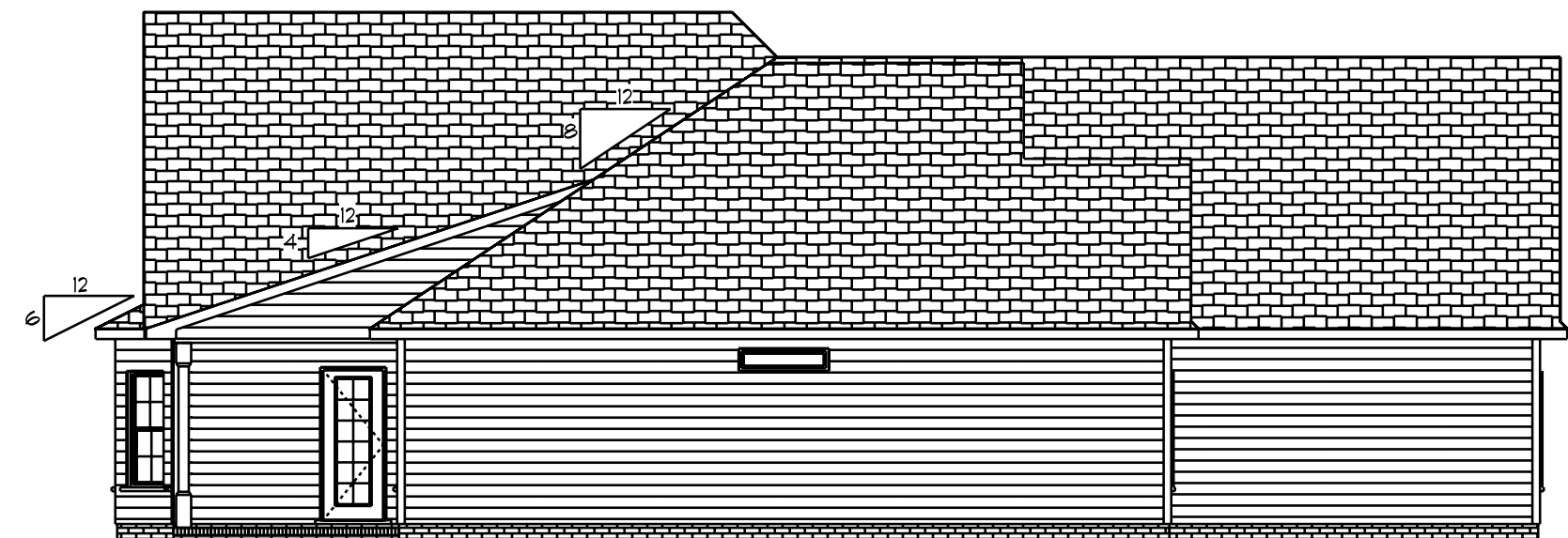
Rear Elevation

Scale: 1/8" = 1'0"



Right Elevation

Scale: 1/8" = 1'0"



Left Elevation

Scale: 1/8" = 1'0"

Fenestration And Insulation Requirements

Climate Zone	3A	4A
Fenestration U-Factor	0.35	0.35
Glazed Fenestration SHGC	0.3	0.3
Minimum Ceiling R-Value	30	30/38
Minimum Wall R-Value	13	15
Minimum Slab R-Value	0	10
Minimum Floor R-Value	19	19
Glazing Pressure	+/-2lpsf	+/-2lpsf

Total Glazing Area = 265.42 Sq.Ft.

1/2" Continuous Wood Sheathing On
All exterior Walls
Exterior Finish Is Vinyl Siding, Vinyl
Shakes Or Manufactured Stone

This Plan Is Designed To Meet
The Requirements Of The 2018
Residential Building Code

ATTIC VENTILATION

1266 SQ.FT. OF ATTIC / 150 = 8.44 SQ.FT.
TOTAL NET FREE VENTILATING AREA.

VENTILATION MAY BE REDUCED 50%
PROVIDED AT LEAST 50 PERCENT AND
NOT MORE THAN 80 PERCENT OF THE
REQUIRED VENTILATING AREA IS
PROVIDED BY VENTILATORS LOCATED IN
THE UPPER PORTION OF THE SPACE TO
BE VENTILATED AT LEAST 3'-0" ABOVE
EAVE OR CORNICE VENTS WITH THE
BALANCE OF THE REQUIRED VENTILATION
PROVIDED BY EAVE OR CORNICE VENTS.

DATE: 1/14/2020

REVISED

DRAWING#

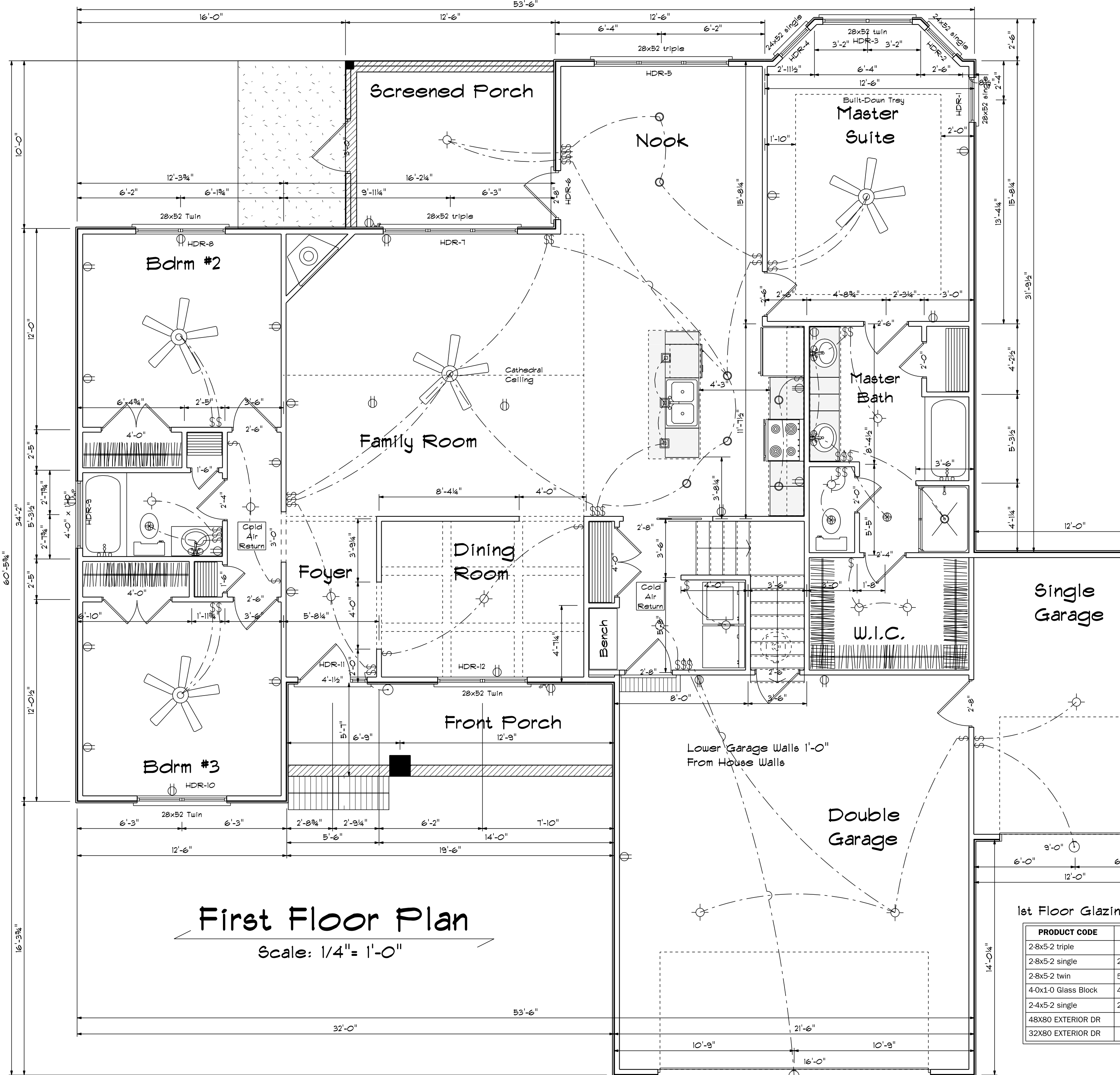
SCALE: 1/4"

DRAWN BY

APPROVED

The Rey

BBH-1959



FIRST FLOOR OPENING SCHEDULE			
PRODUCT CODE	SIZE	HINGE	COUNT
32X80 COLONIAL A 1	2'-8"	R	1
50X80 LH ENTRY - 1 6L	4'-1 1/2"	NA	1
32X80 FRENCH A 1	2'-8"	R	1
192X84 - 1 PANEL	16'-0"	U	1
36X80 METAL SCREEN 2 LITE	3'-0"	L	1
1-6 Door Unit	1'-6"	L	1
2-0 Door Unit	2'-0"	R	1
2-4 Door Unit	2'-4"	R	1
2-6 Door Unit	2'-6"	L	1
4-0 Doublehung Door Unit	4'-0"	LR	1
1-6 colonial	1'-6"	R	1
2-4 colonial	2'-4"	L	1
2-6 colonial	2'-6"	L	1
2-6 colonial	2'-6"	R	2
2-8 colonial	2'-8"	L	1
30X80 COLONIAL A 1	2'-6"	L	1
40 doublehung colonial	4'-0"	LR	2
2-0 Door Unit RH	2'-0"	R	1
28 pocket	2'-8"	N	1
30X80 GLASS	2'-6"	L	1
24x52 single	2'-4" x 5'-2"	N	2
28x52 triple	8'-0" x 5'-2"	NA	2
28x52 twin	5'-4" x 5'-2"	NN	1
28x52 Twin	5'-4" x 5'-2"	NA	3
28x52 single	2'-8" x 5'-2"	N	1
48X12 TRANSOM	4'-0" x 1'-0"	N	1

Builder Should Verify All Dimensions Prior To Construction.

Areas

Main Floor	1804
Bonus Room	288
Total Heated	2092
Garages	727
Front Porch	109
Screened Porch	123

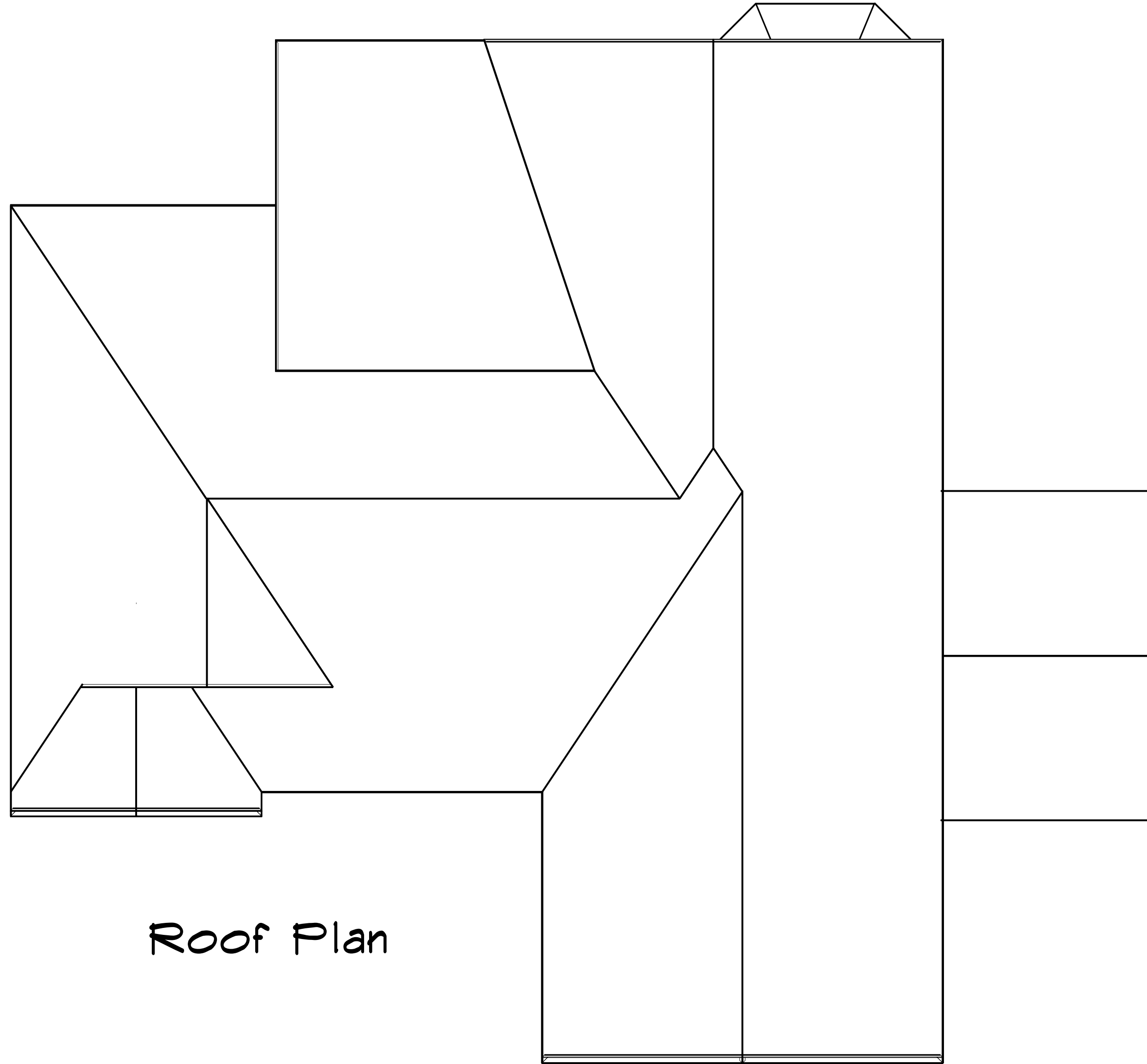
All Headers Double #2 Pine With Double Jacks When Length Over 6'-0"

1st Floor Glazing Area = 265.42 Sq.Ft.

PRODUCT CODE	SIZE	COUNT	WIDTH	HEIGHT
2-8x5-2 triple	8'-0"	2	8'-0"	5'-2"
2-8x5-2 single	2'-8" x 5'-2"	2	2'-8"	5'-2"
2-8x5-2 twin	5'-4" x 5'-2"	3	5'-4"	5'-2"
4-0x1-0 Glass Block	4'-0" x 1'-0"	1	4'-0"	1'-0"
2-4x5-2 single	2'-4" x 5'-2"	2	2'-4"	5'-2"
48X80 EXTERIOR DR	4'-0"	1	4'-0"	6'-8"
32X80 EXTERIOR DR	2'-8"	1	2'-8"	6'-8"

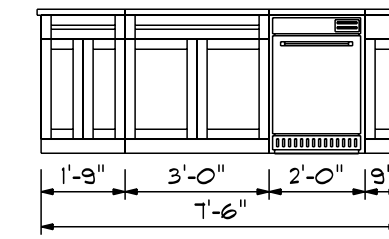
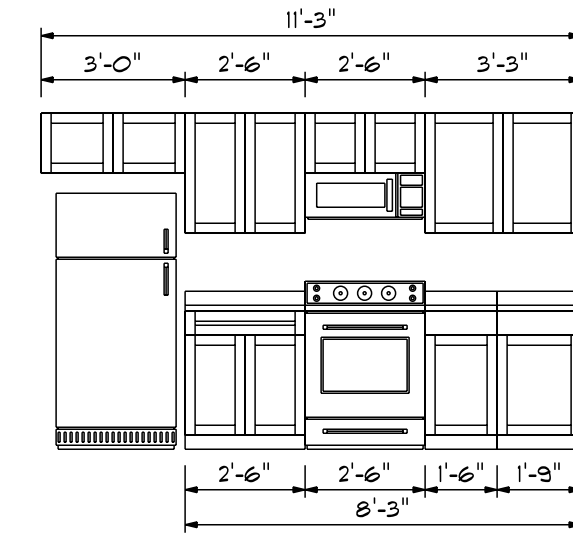
Length	Size	HDR
3' 7 1/2"	2x10	1
2' 7 1/2"	2x8	2
3' 7 1/2"	2x10	3
2' 7 1/2"	2x8	4
8' 7 1/2"	2x12	5
3' 7 1/2"	2x10	6
8' 7 1/2"	2x12	7
5' 7 1/2"	2x12	8
4' 4 1/2"	2x10	9
5' 7 1/2"	2x12	10
4' 4 1/2"	2x10	11
5' 7 1/2"	2x12	12
3' 7 1/2"	2x8	13

First Floor Plan
Scale: 1/4" = 1'-0"



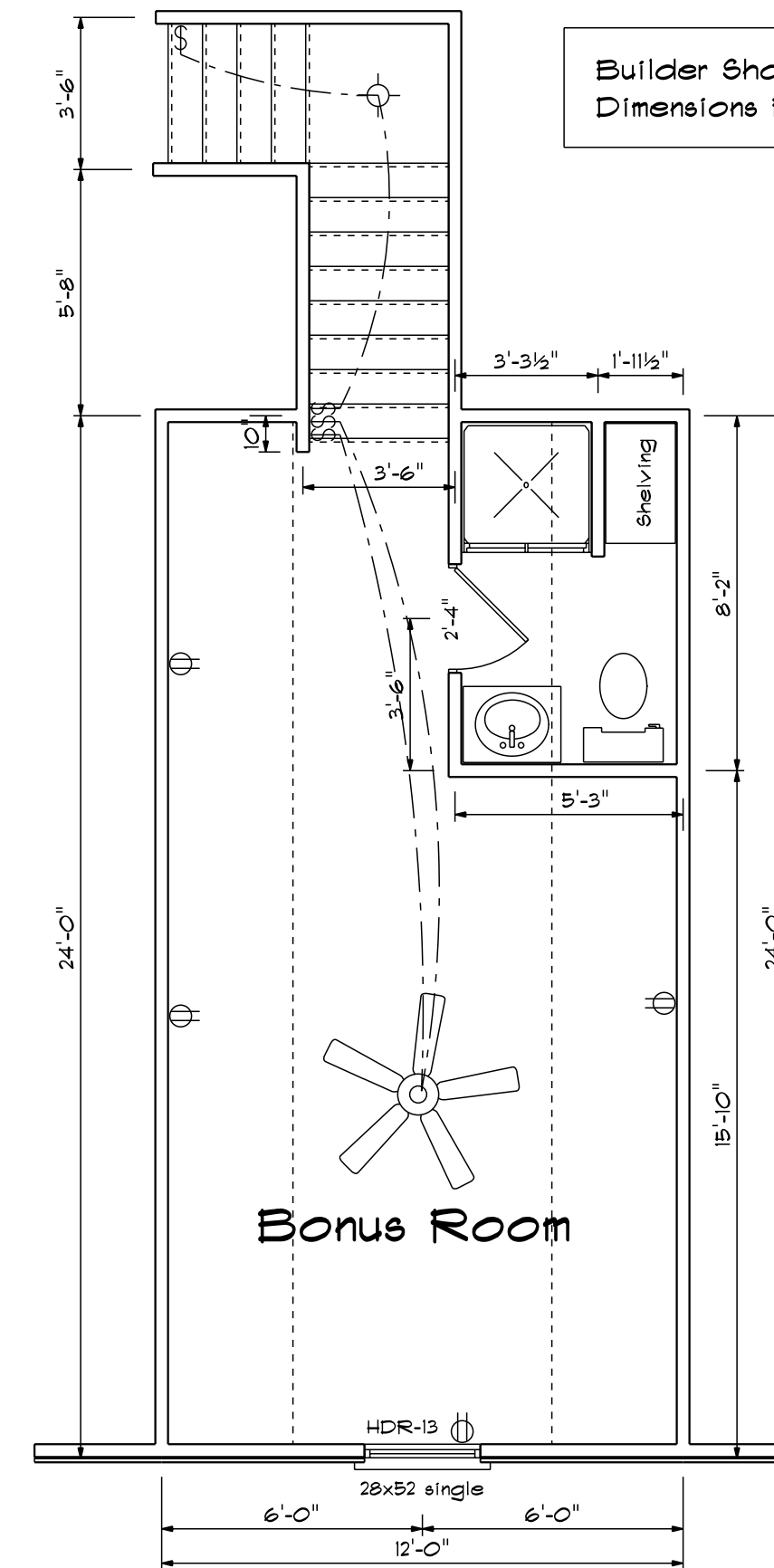
Roof Plan

Kitchen Cabinets



BONUS ROOM OPENING SCHEDULE			
PRODUCT CODE	SIZE	HINGE	COUNT
2-0 Door Unit	2'-0"	L	1
28x52 single	2'-8" x 5'-2"	N	1

Builder Should Verify All Dimensions Prior To Construction.



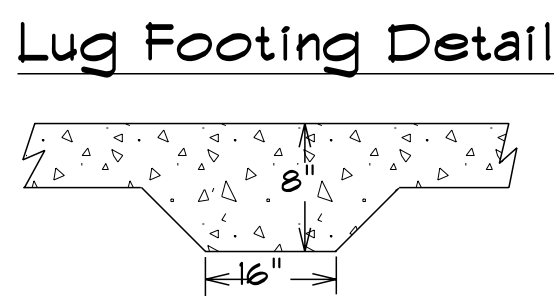
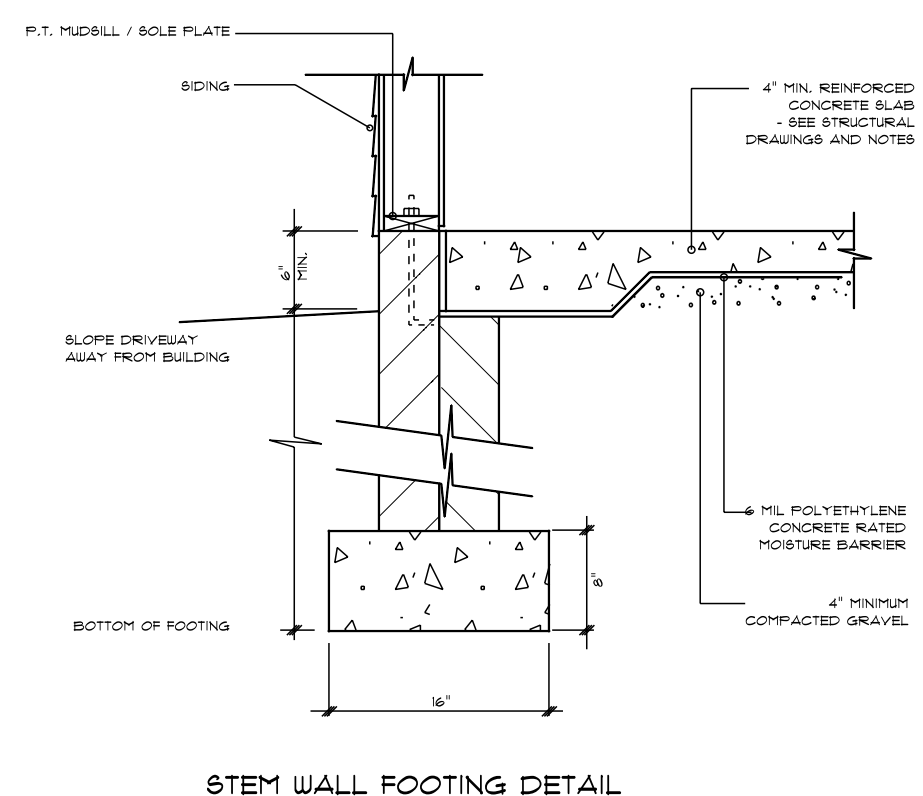
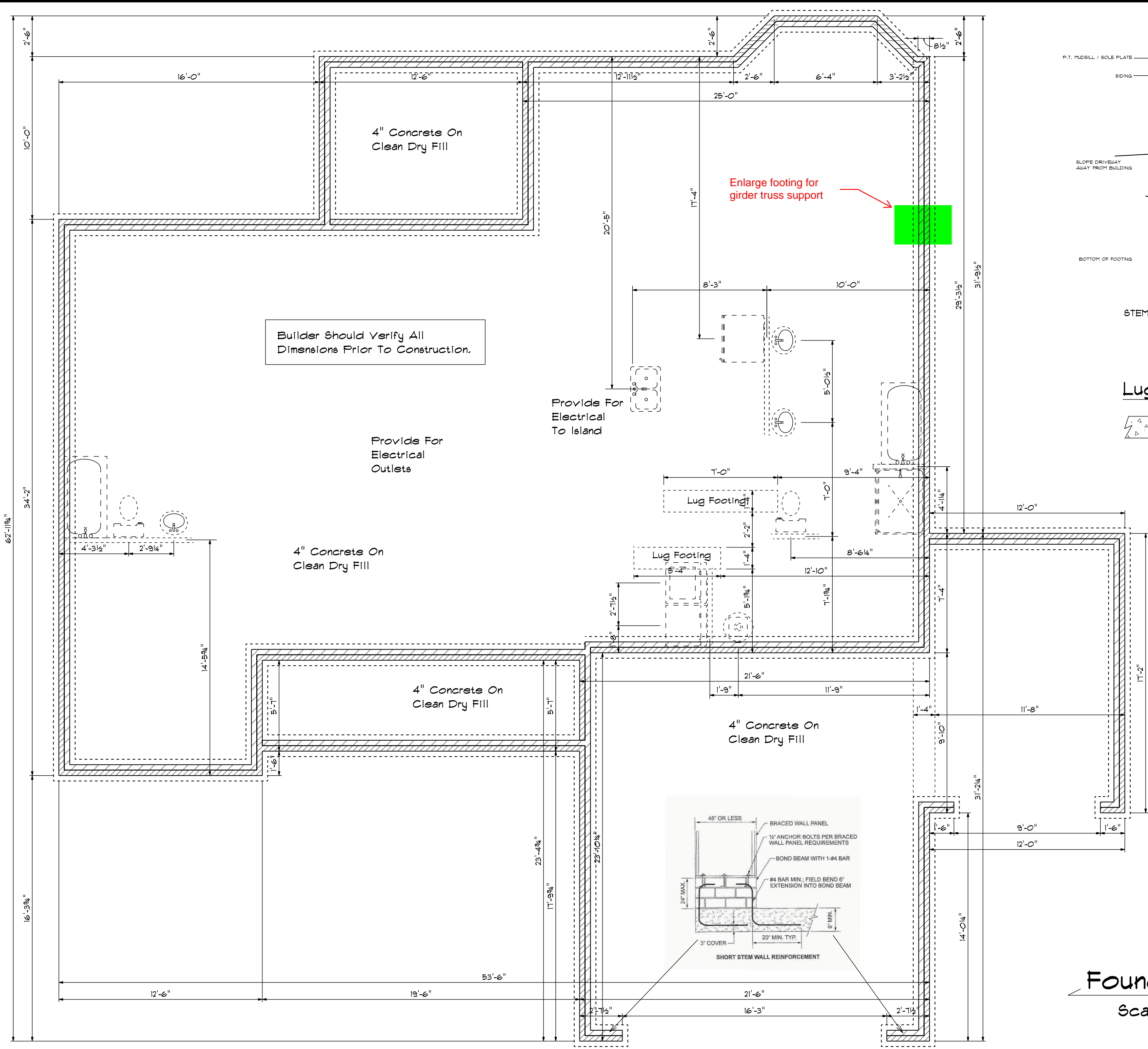
Base Designs
2121 Chimney Pt.
Linden N.C. 28356
910-864-9310

1/14/2020
REVISED
DRAWING#

SCALE: 1/4"
DRAWN BY
APPROVED

The Rey

BBH-1959



Foundation Anchorage
 The Wood Sole Plates At Exterior Walls On Monolithic Slabs Shall Be Anchored To The Foundation With Anchor Bolts Spaced A Maximum Of 6' On Center And Not More Than 12" From The Corner. Anchor Bolts Shall Be At Least 1/2" In Diameter And Extend A Minimum Of 1" Into Concrete.

This Plan is Designed To Meet The Requirements Of The 2018 Residential Building Code

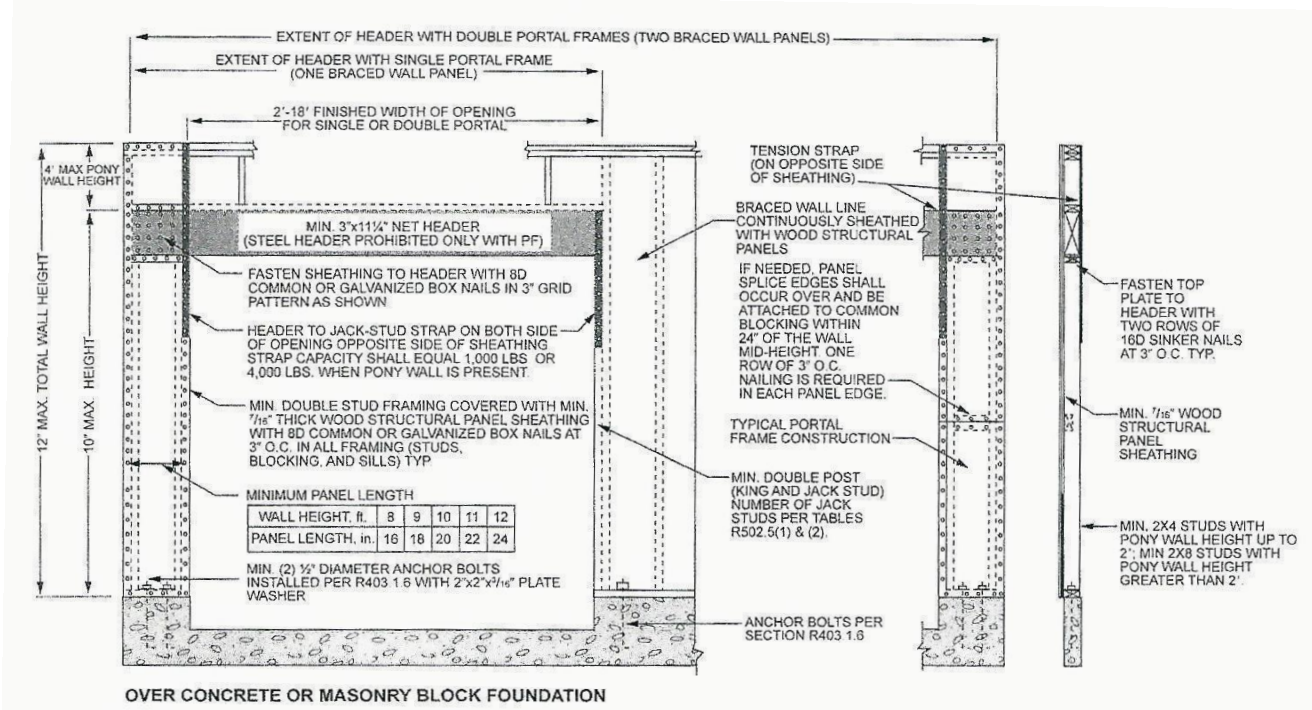
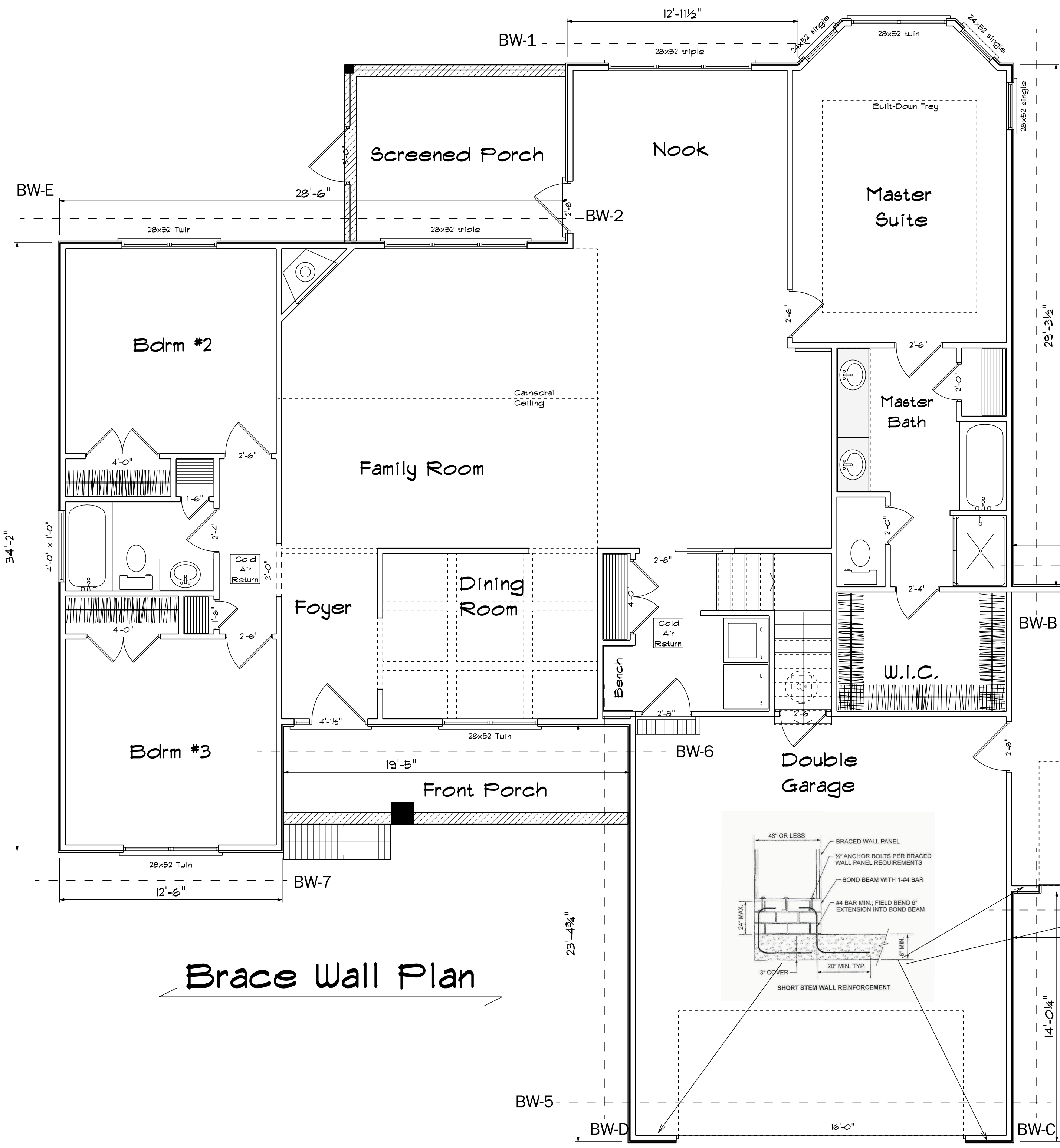
Foundation Plan
 Scale: 1/4" = 1'-0"

DATE: 1/14/2020
 REVISED
 DRAWING#

SCALE: 1/4"
 DRAWN BY
 APPROVED

The Rey

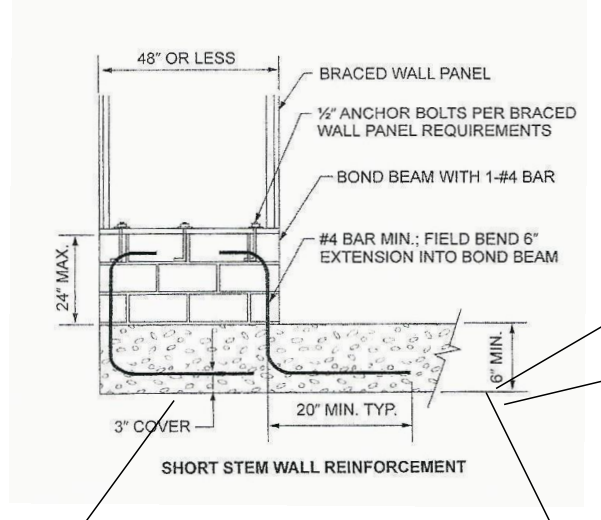
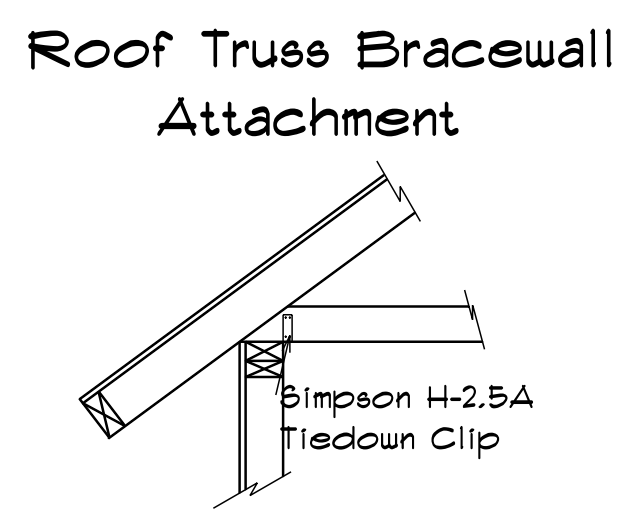
BBH-1959



PF Garage Door Framing Method
Per NCRC 2018 Section R602.10

Based On 130 MPH Wind Speed
Fasteners Shall Be 6d Common Nails Or 8d (2-1/2" Long x 0.113" Diameter) Nail Spaced A Minimum Of 6" Apart.

Brace Wall	Minimum Length	Panels Required	Length Provided	UBP Panels Provided	GB Panels Provided
BW-A	20'-0"	3.5	17'-2"	4.29	4.29
BW-B	30'-0"	5	28'-3"	7.31	7.31
BW-C	15'-0"	3	14'-0"	3.5	3.5
BW-D	25'-0"	4.5	23'-5"	5.85	5.85
BW-E	35'-0"	6	34'-2"	8.54	8.54
BW-1	15'-0"	3	13'-0"	3.25	3.25
BW-2	30'-0"	5	28'-6"	7.12	7.12
BW-3	15'-0"	3	12'-0"	3	3
BW-4	Portal	PF	Portal	PF	PF
BW-5	Portal	PF	Portal	PF	PF
BW-6	20'-0"	4.5	19'-5"	4.85	4.85
BW-7	15'-0"	3	12'-6"	3.13	3.13



Brace Wall Plan