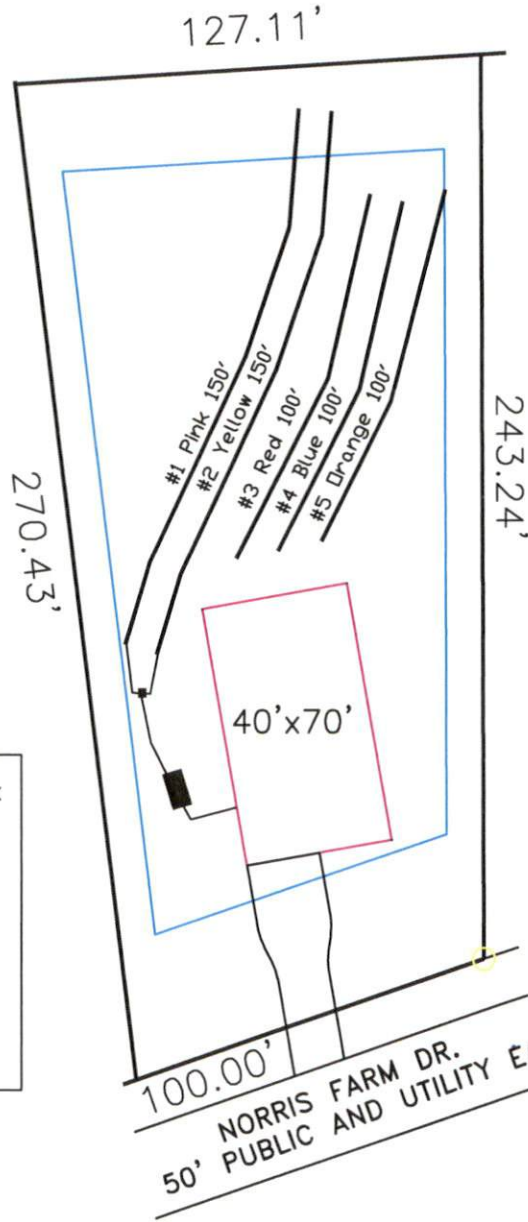


Norris Farm 4-Bedroom Septic Proposal Lot #6



6

0.658 AC.
28669 SF

System: Gravity to D-Box
 Lines: 1-2 (300')
 0.4 LTAR
 24" Trench Bottom
 Accepted Status System
 Repair: Gravity to D-Box
 Lines: 3-5 (300')
 0.4 LTAR
 24" Trench Bottom
 Accepted Status System

GRAPHIC SCALE
1" = 50'



Adams
 Soil Consulting
 919-414-6761
 Job #574

Norris Farm

Lot #6

4-Bedroom Home (480 gal./day)

<u>LINE #</u>	<u>COLOR</u>	<u>BS</u>	<u>HI</u>	<u>FS</u>	<u>ELEVATION</u>	<u>LINE LENGTH</u>	<u>Design Length</u>
TBM		2.0		100.0		<u>in field</u>	<u>installation</u>
INST. 1			102.0				
1	Pink			3.2	98.8	150	150
2	Yellow			3.6	98.4	150	150
3	Red			3.9	98.1	135	100
4	Blue			4.2	97.8	135	100
5	Orange			4.5	97.5	105	100

	<u>System</u> Lines 1-2	<u>Repair</u> Lines 3-5
System Type	Accepted Status System	Accepted Status System
Suggested Soil LTAR	0.40	0.40
Total Line Length	300	300
Square Footage	900	900
Proposed Trench Bottom	18-24"	18-24"
Distribution Method	Gravity to D-Box	Gravity to D-Box