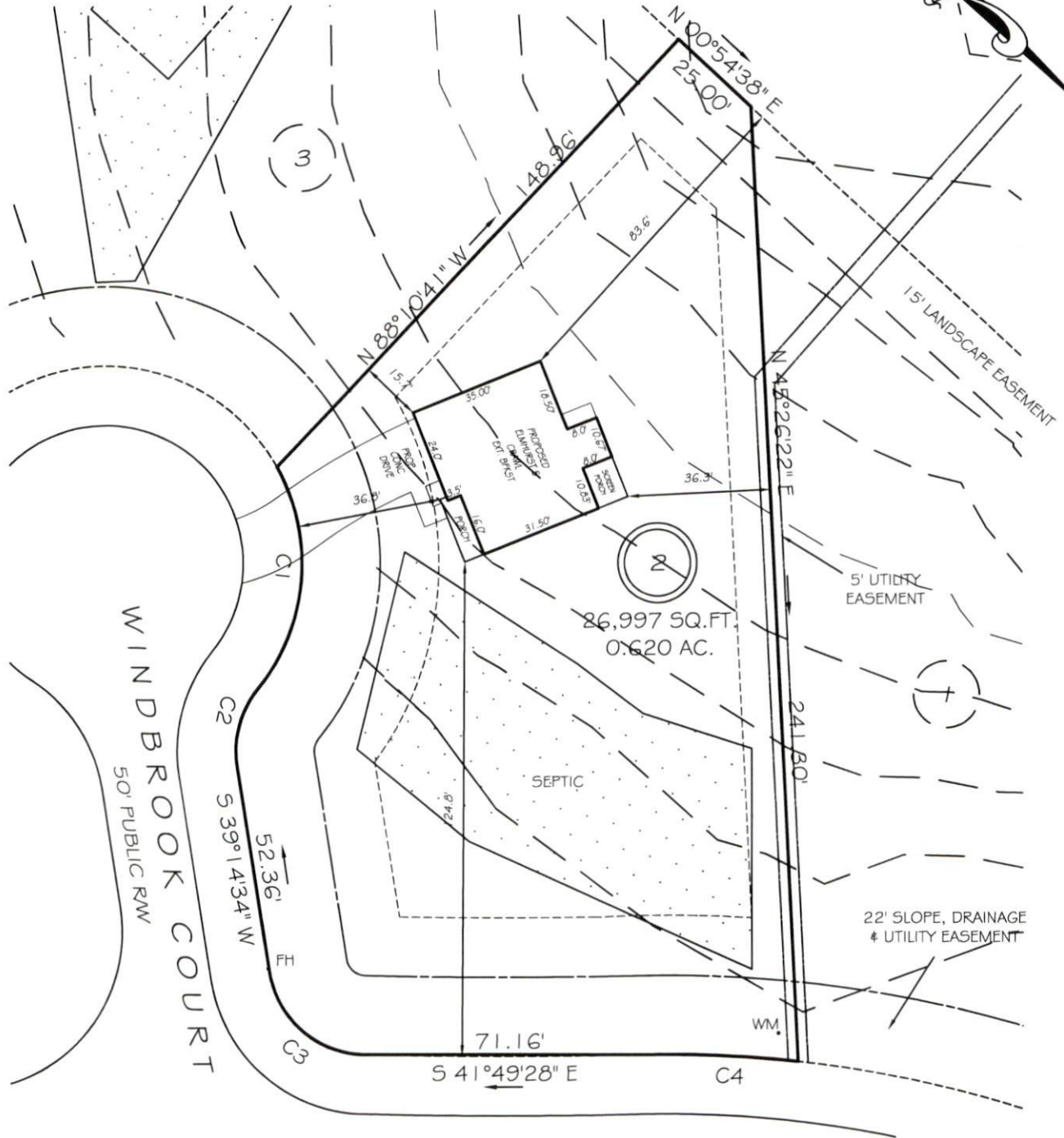


I, MICHAEL P. GRIFFIN, certify that under my direction and supervision this map was drawn from an actual field survey; that the error of closure of the survey as calculated by coordinates is 1: 10,000+; that the area shown hereon was calculated by coordinates.

Witness my hand and seal this day of MONTH 2019.

BK 2019 PGS 421-424
HARNETT CO. REGISTRY

THOMAS & ADELL COLEY
PIN #0644-15-5318.000
D.B. 3315 PG. 274
MAP #2015-115



VILLAGE BEND DRIVE

50' PUBLIC RW & UTILITY

SETBACKS

FRONT	35'
REAR	25'
SIDE	10'
CORNER SIDE	20'

IMPERVIOUS AREAS

HOUSE	1602 SQ. FT.
DRIVE & WALKS	665 SQ. FT.
PATIO	32 SQ. FT.
TOTAL	2299 SQ. FT.
ALLOWED	2945 SQ. FT.

C1 R=50.00' L=59.71' S53°13'19"W 56.22'
C2 R=25.00' L=21.03' N63°20'16"E 20.41'
C3 R=25.00' L=34.77' N00°35'59"W 32.03'
C4 R=300.00' L=39.66' S39°25'10"E 39.63'

PRELIMINARY

NOT FOR RECORDATION,
SALES OR CONVEYANCE

LEGEND

EIP	EXISTING IRON PIPE	FE5	FLARED END SECTION
IPS	IRON PIPE SET	WM	WATER METER
RW	RIGHT OF WAY	CO	CLEAN OUT
N/F	NOW OR FORMERLY	FH	FIRE HYDRANT

