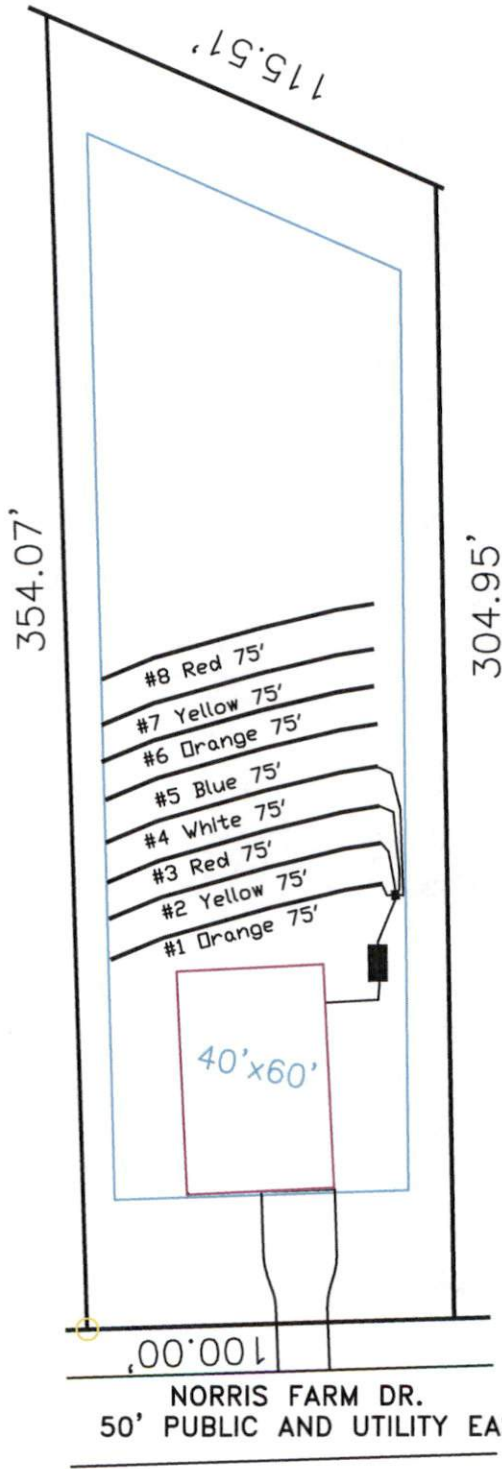


Norris Farm
 4-Bedroom Septic Proposal
 Lot #19

19

0.775 AC.
 33750 SF

System: Gravity to D-Box
 Lines: 1-4 (300')
 0.4 LTAR
 24' Trench Bottom
 Accepted Status System
 Repair: Pressure Manifold
 Lines: 5-8 (300')
 0.4 LTAR
 24' Trench Bottom
 Accepted Status System



GRAPHIC SCALE
 1" = 50'



Adams
 Soil Consulting
 919-414-6761
 Job #574

Norris Farm

Lot #19

4-Bedroom Home (480 gal./day)

<u>LINE #</u>	<u>COLOR</u>	<u>BS</u>	<u>HI</u>	<u>FS</u>	<u>ELEVATION</u>	<u>LINE LENGTH</u>	<u>Design Length</u>
TBM		2.0		100.0		<u>in field</u>	<u>installation</u>
INST. 1			102.0				
1	Orange			2.5	99.5	80	75
2	Yellow			3	99	80	75
3	Red			3.3	98.7	80	75
4	White			3.8	98.2	80	75
5	Blue			4	98	80	75
6	Orange			4.6	97.4	80	75
7	Yellow			4.9	97.1	80	75
8	Red			5.9	96.1	80	75

System

Lines 1-4

System Type

Accepted Status System

Repair

Lines 5-8

Accepted Status System

Suggested Soil LTAR

0.40

0.40

Total Line Length

300

300

Square Footage

900

900

Proposed Trench Bottom

24"

20"

Distribution Method

Gravity to D-Box

Gravity to D-Box