

Norris Farm
Lot #18

4-Bedroom Home (480 gal./day)

<u>LINE #</u>	<u>COLOR</u>	<u>BS</u>	<u>HI</u>	<u>FS</u>	<u>ELEVATION</u>	<u>LINE LENGTH</u>	<u>Design Length</u>
TBM		2.0		100.0		<u>in field</u>	<u>installation</u>
INST. 1			102.0				
1	Red			1	101	85	75
2	Blue			1.5	100.5	85	75
3	Orange			2.3	99.7	85	75
4	Yellow			2.8	99.2	83	75
5	White			3.4	98.6	81	75
6	Pink			3.9	98.1	81	75
7	Red			4.5	97.5	79	75
8	Blue			5.1	96.9	77	75

System

Repair

Lines 1-4

Lines 5-8

System Type

Accepted Status System

Accepted Status System

Suggested Soil LTAR

0.40

0.40

Total Line Length

300

300

Square Footage

900

900

Proposed Trench Bottom

24"

20"

Distribution Method

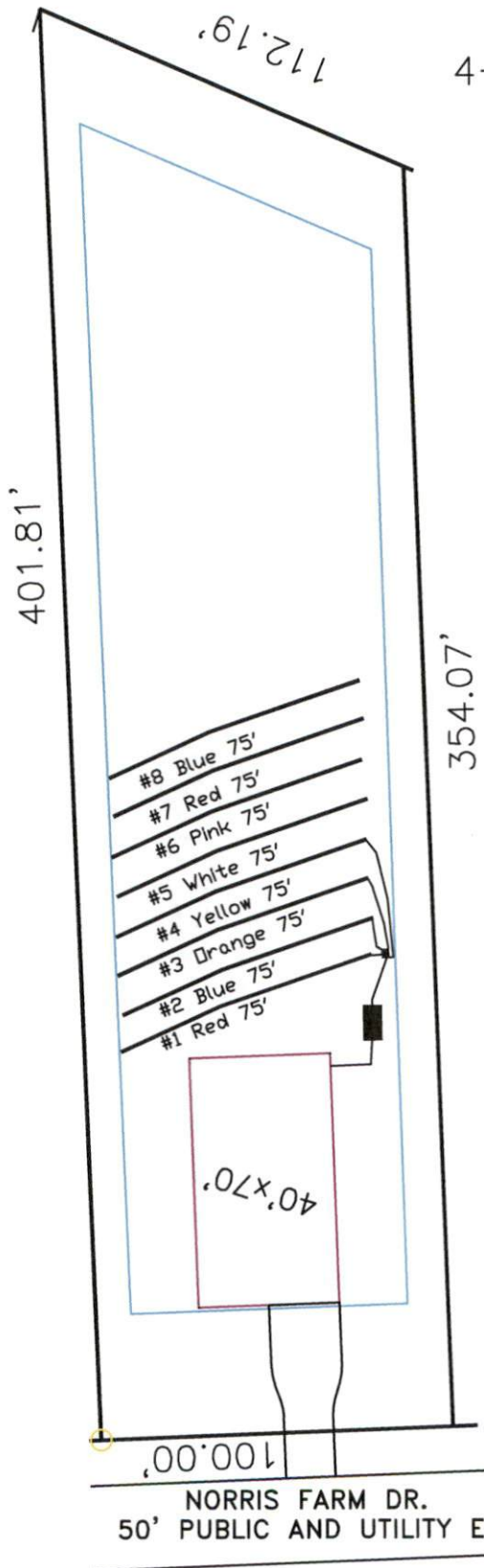
Gravity to D-Box

Gravity to D-Box

Norris Farm
4-Bedroom Septic Proposal
Lot #18

18

0.874 AC.
38064 SF



System: Gravity to D-Box
Lines: 1-4 (300')
0.4 LTAR
24" Trench Bottom
Accepted Status System
Repair: Pressure Manifold
Lines: 5-8 (300')
0.4 LTAR
24" Trench Bottom
Accepted Status System

GRAPHIC SCALE
1" = 50'



Adams
Soil Consulting
919-414-6761
Job #574