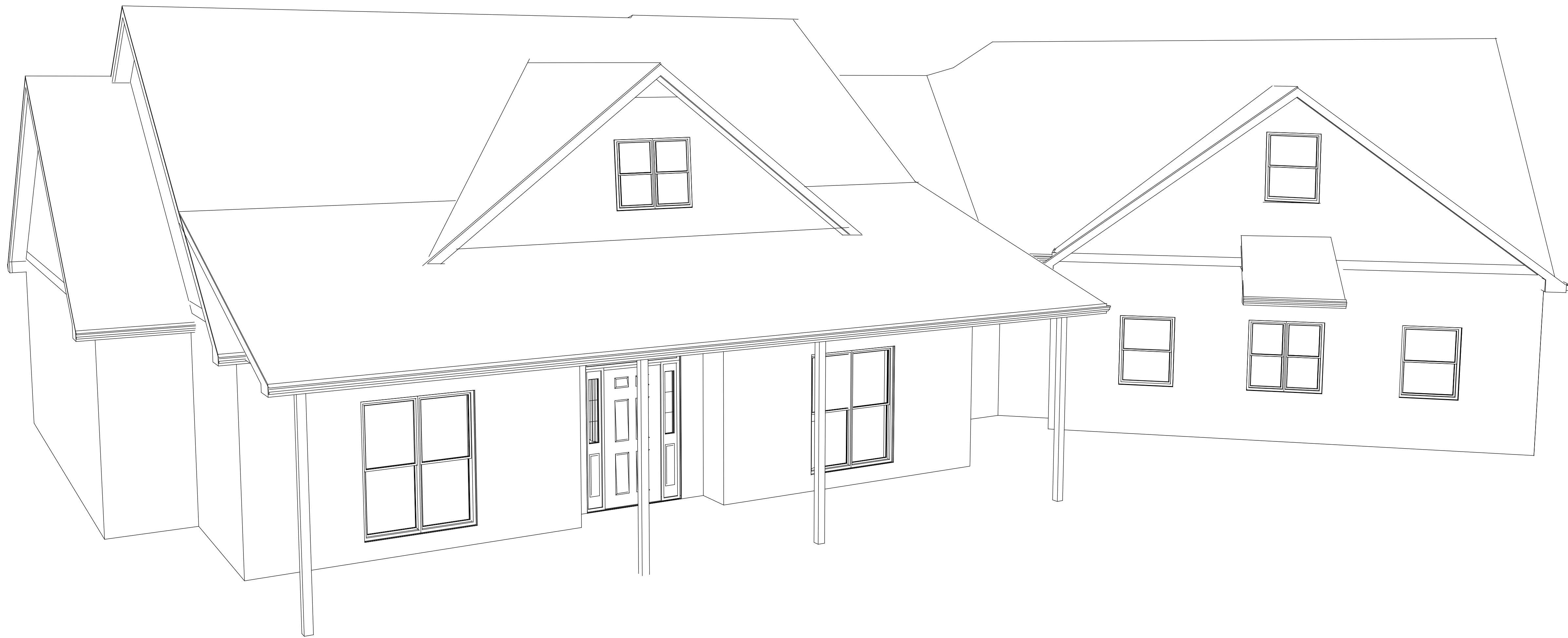


NOTICE TO CONTRACTOR
All construction must comply with current NC Building Codes
and is subject to field inspection and verification.

APPROVED

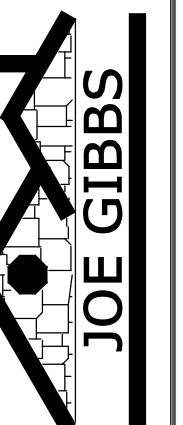
Limited building only review
Permit holder responsible for
full compliance with the code

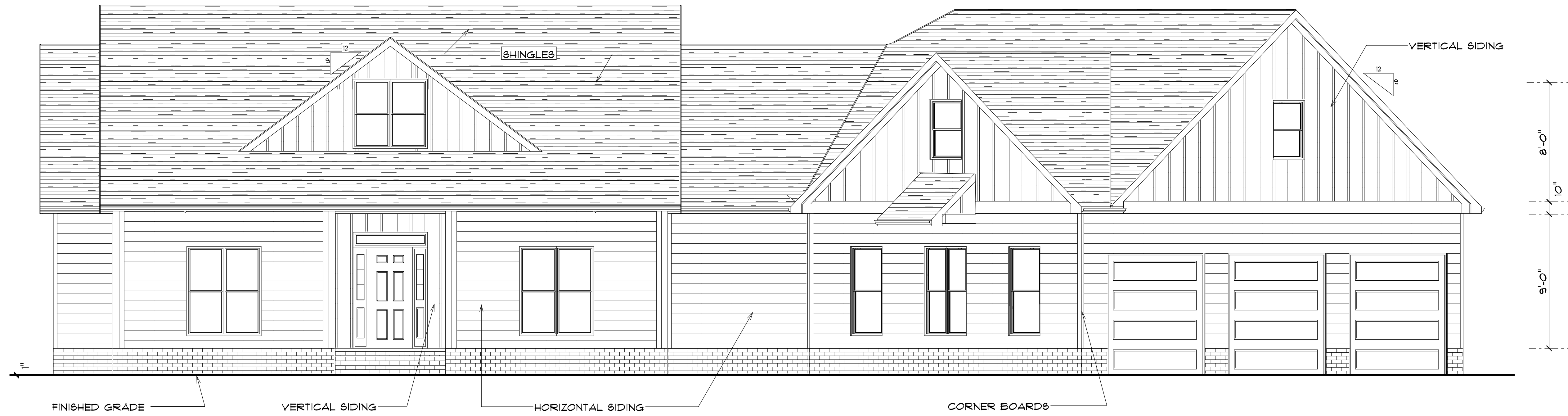
07/15/2020



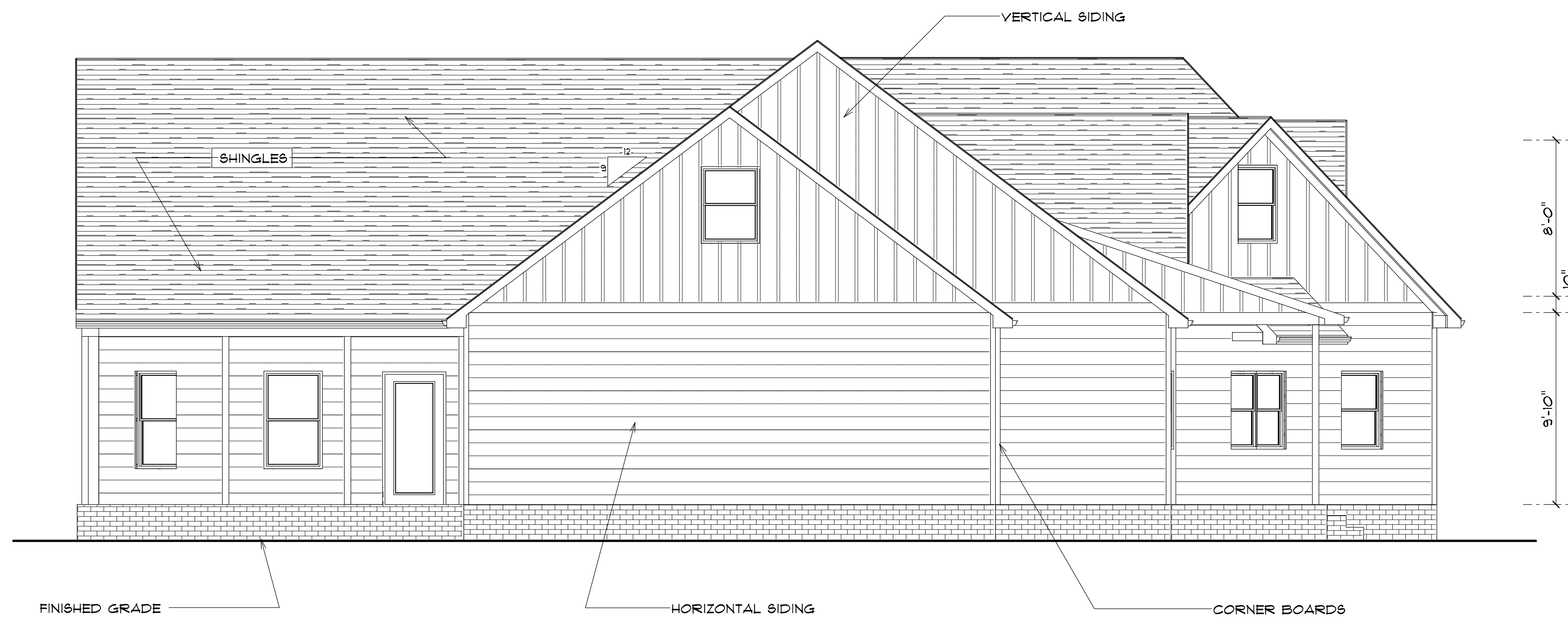
**FRANK
RESIDENCE**

688 Turner Ashby Rd,
Martinsville, VA 24112





FRONT ELEVATION
SCALE: 1/4" = 1'-0"



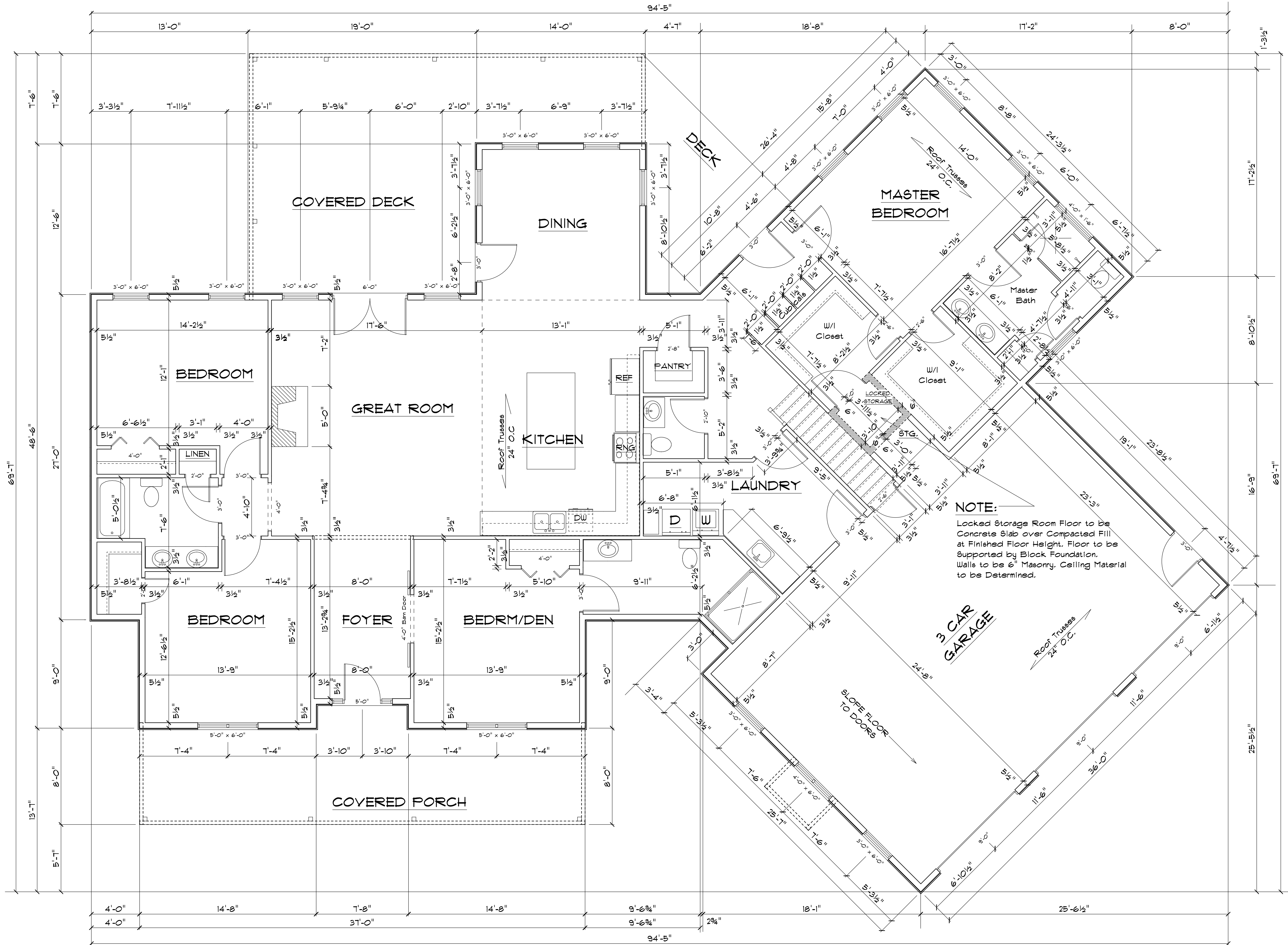
LEFT ELEVATION
SCALE: 1/4" = 1'-0"



REAR ELEVATION
SCALE: 1/4" = 1'-0"



RIGHT ELEVATION
SCALE: 1/4" = 1'-0"



FIRST FLOOR
SQUARE FOOTAGE
2796 Heated
1701 Unheated
4497 Total

SECOND FLOOR
SQUARE FOOTAGE
612 Bonus Rm
990 Unfinished
1602 Total

TOTAL
SQUARE FOOTAGE
3408 Heated
2691 Unheated
6099 Total

NOTE:
 Locked Storage Room Floor to be Concrete Slab over Compacted Fill at Finished Floor Height. Floor to be supported by Block Foundation. Walls to be 6" Masonry. Ceiling Material to be Determined.

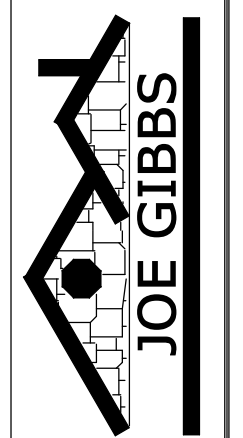
NOTE:
 ALL ANGLES TO 45 DEGREES

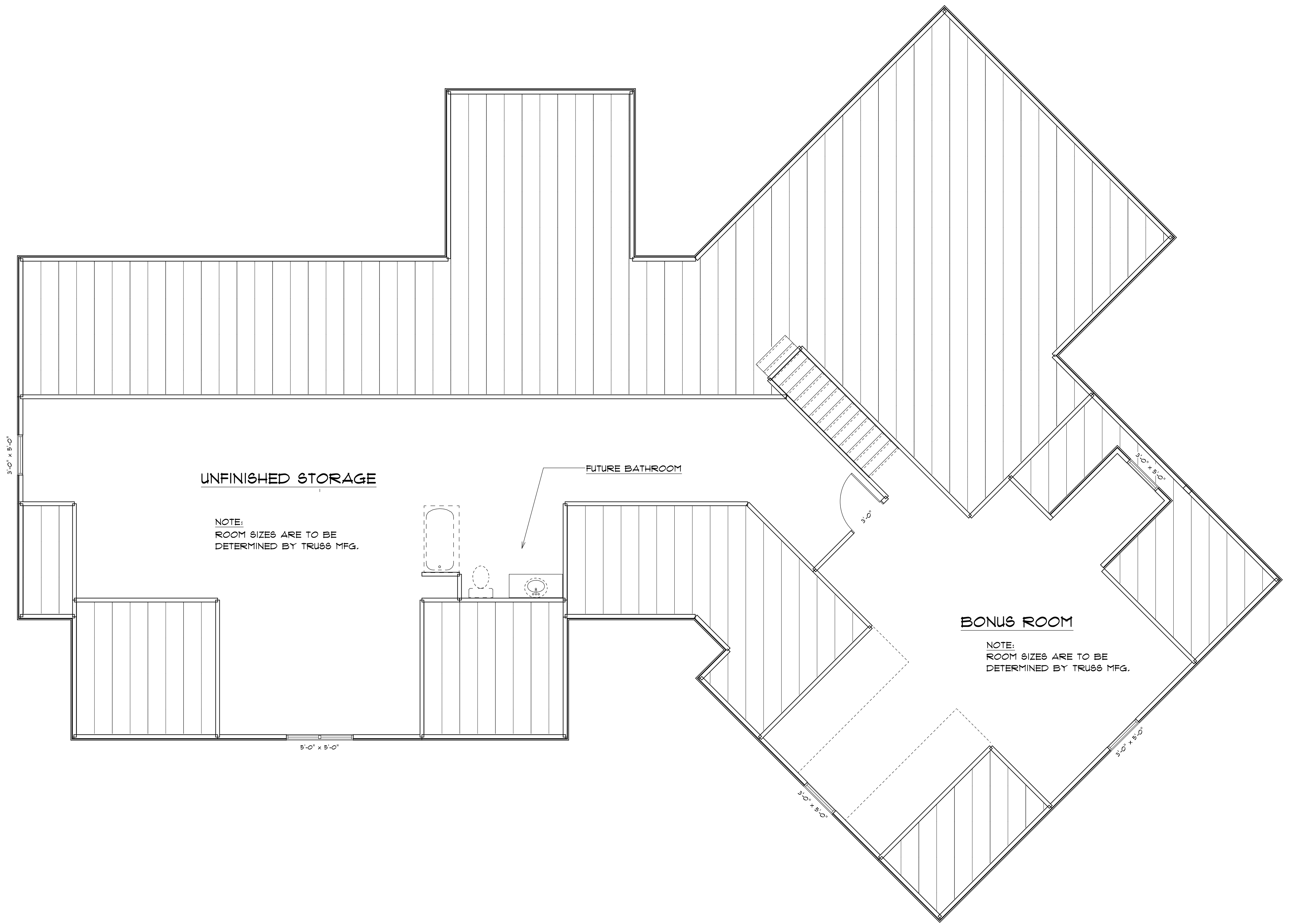
1ST FLOOR PLAN
 SCALE: 1/4" = 1'-0"

1ST FLOOR PLAN

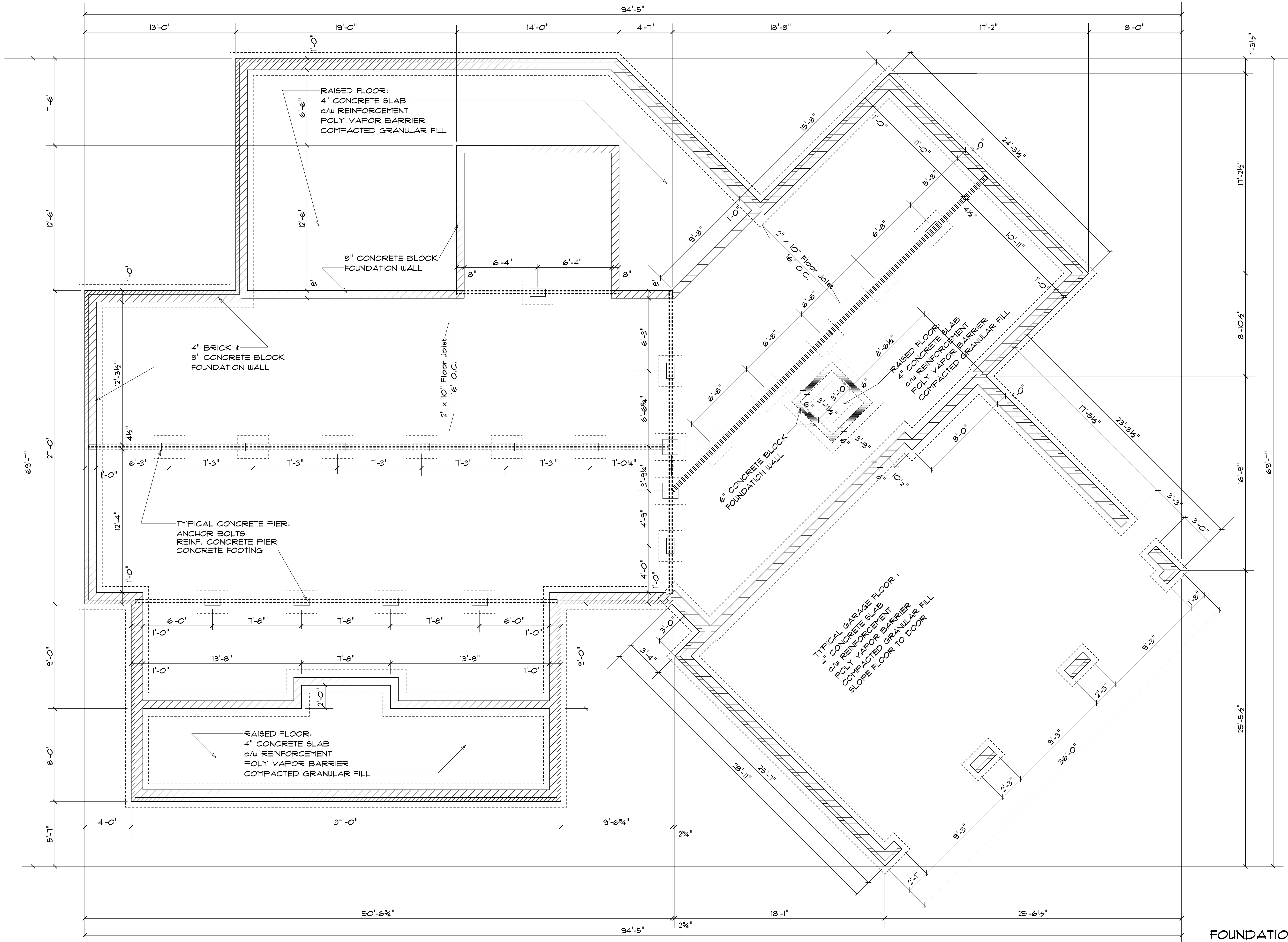
**FRANK
 RESIDENCE**

688 Turner Ashby Rd,
 Martinsville, VA 24112





2ND FLOOR PLAN
SCALE: 1/4" = 1'-0"



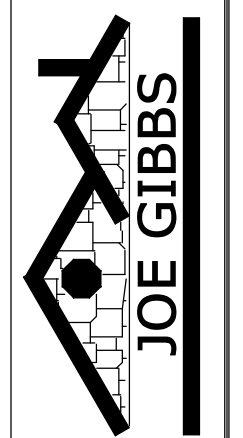
NOTE:
ALL ANGLES ARE 45 DEGREES

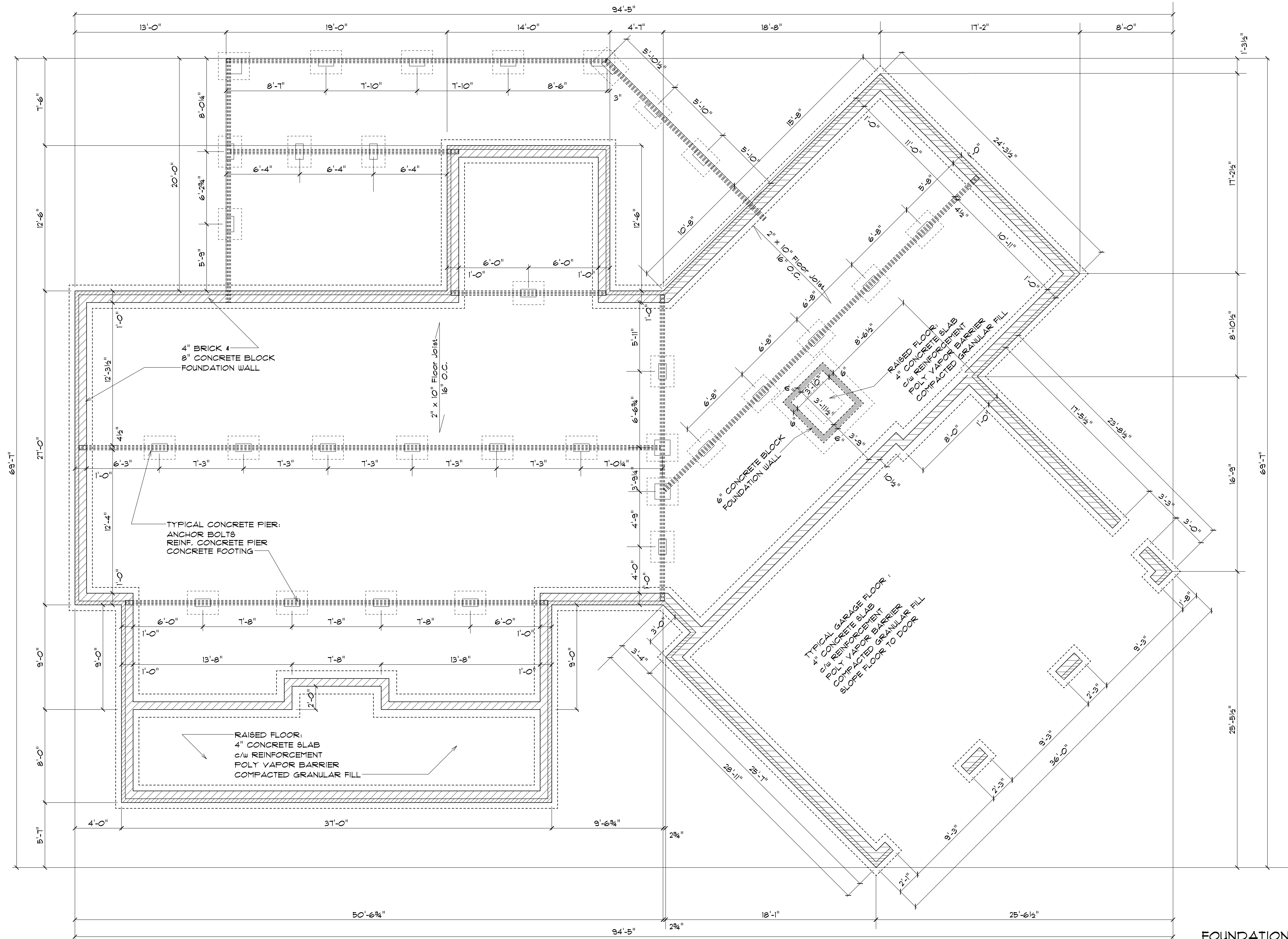
FOUNDATION PLAN
SCALE: 1/4" = 1'-0"

FOUNDATION PLAN
RAISED CONCRETE REAR PATIO

FRANK
RESIDENCE

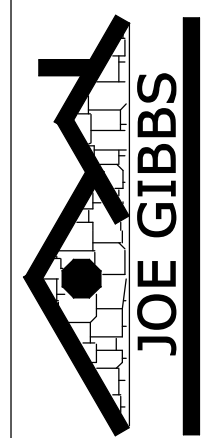
688 Turner Ashby Rd,
Martinsville, VA 24112





NOTE:
ALL ANGLES ARE 45 DEGREES

FOUNDATION PLAN
SCALE: 1/4" = 1'-0"



688 Turner Ashby Rd,
Martinsville, VA 24112

**FRANK
RESIDENCE**

FOUNDATION PLAN
WOODEN REAR DECK



ProdID	Length	Product	Products	Pieces	Net Qty	Fab Type
GDH	36' 0"	2.0 RigidLam LVL 1-3/4 x 9-1/4		2	2	FF
FB1-2	10' 0"	2.0 RigidLam LVL 1-3/4 x 9-1/4		2	2	FF

Truss Connector Total List		
Manuf	Product	Qty
USP	MSH29	7
USP	One RT7A	133
USP	One RT8A	1
USP	SKH210R	3
USP	THD26	21
USP	THDH21R-3	2
USP	THDH26-2	2
USP	THDH28-2	5

Connector Summary		
Qty	Manuf	Product
1	NA	SKH210R-2
1	USP	THD26

ROOF TRUSS FRAMING

DRAWING SCALE : NTS



MIKE SHEAN
FRANK RESIDENCE
ROOF TRUSS PLACEMENT PLAN

REVISIONS	
DATE	BY
2-26-20	LEE ATKINS

PROJECT NUMBER
20010112
SHEET NUMBER
1 / 1



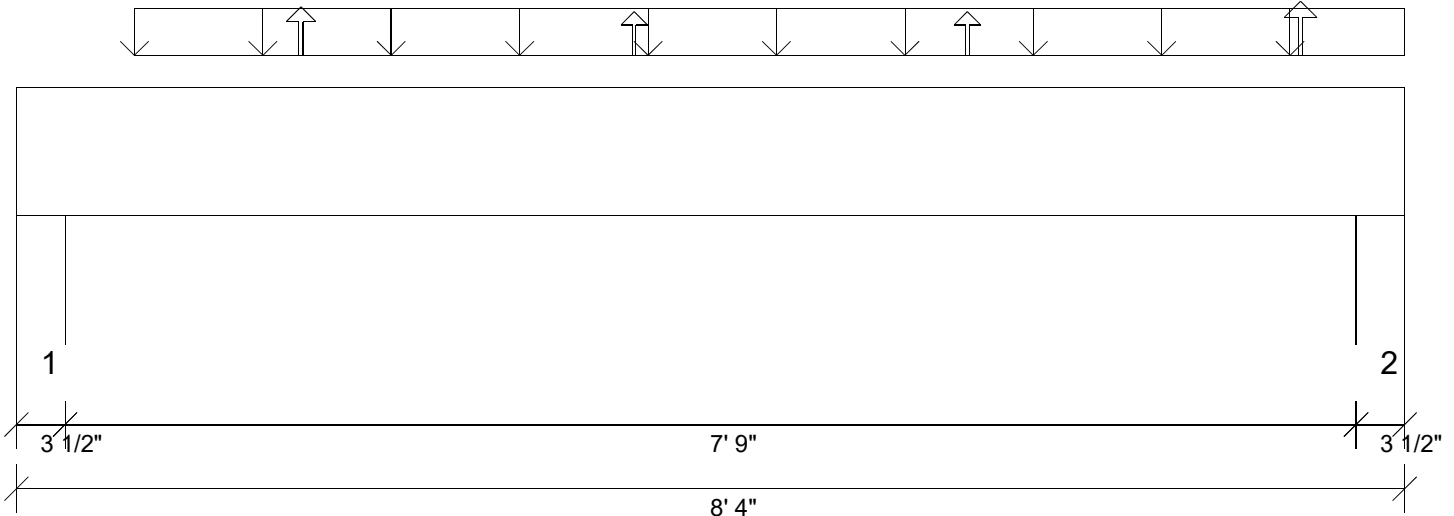
Job: 20010112
 Member Type: Beam | Level: 1st FLOOR
 MiTek SAPPiRE™ Structure Version 8.3.3.247.Update7
 Designed by Single Member Design Engine

Label: FB1-2-i96

Page: 1 of 3
 Date: 06/24/2020 16:19:55

Member: 2 - 2.0 RigidLam DF LVL 1-3/4 x 9-1/4

Status: Design Passed



Graphical Illustration - Not To Scale
 Member Cut Length - 8'- 4"
 MemberPitch - 0/12

Design Information:

Building Code:	IRC2015	Floor Dead Load:	10.0 lb/ft ²	Roof Dead Load:	10.0 lb/ft ²	Ground Snow Load:	20.0 lb/ft ²
Design Methodology:	ASD	Floor Live Load:	40.0 lb/ft ²	Roof Live Load:	20.0 lb/ft ²		
		Unbraced Length Top:	1'- 10 1/2"	Bottom:	1'- 10 1/2"		

Design Results:

	Location	Design	Control	Result	LDF	Load Combination
Critical Moment (Pos)	3'- 8 1/2"	1512.96 lb ft	15318.75 lb ft	Passed - 10%	1.15	D + Lr
Critical Moment (Neg)	7'- 8 1/2"	-12.29 lb ft	21313.05 lb ft	Passed - 0%	1.60	0.6D + 0.6W
Critical Shear	1'- 3/4"	644.55 lb	7198.04 lb	Passed - 9%	1.15	D + Lr
Live Load Deflection	4'- 1 7/8"	0'	0'- 3/4" (L/360)	Passed - L/999	-	0.75(L + Lr + 0.6W)
Total Load Deflection	4'- 1 7/8"	0'- 1/16"	0'- 1" (L/240)	Passed - L/999	-	D + 0.75(L + Lr + 0.6W)
Max. Reaction			<u>Supported Mt</u> <u>Supporting Mt</u>			
	0'- 2 1/2"	653.63 lb	9187.52 lb 5206.26 lb	Passed - 13%	1.15	D + Lr
	8'- 1 1/2"	849.59 lb	9187.48 lb 5206.24 lb	Passed - 16%	1.15	D + Lr
	8'- 1 1/2"	-27.10 lb	12782.58 lb -	Passed - 1%	1.60	0.6D + 0.6W

Design Notes:

* Member design assumed proper ply to ply connection. Verify connection between plies according to code specification

Loading:

Type	Start	End	Source	Maximum Load Magnitudes			
				Dead	Floor Live	Roof Live	Snow
Self Weight	0'	8'- 4"	Self Weight	9 lb/ft	-	-	-
Uniform	0'- 8 1/2"	8'- 4"	Smoothed Load	94 lb/ft	-	94 lb/ft	56 lb/ft
Point	1'- 8 1/2"	1'- 8 1/2"	J09A(c03)	-	-	-	-
Point	3'- 8 1/2"	3'- 8 1/2"	J09A(c04)	-	-	-	-
Point	5'- 8 1/2"	5'- 8 1/2"	J09A(c05)	-	-	-	-
Point	7'- 8 1/2"	7'- 8 1/2"	J09A(c06)	-	-	-	-

Support Information:

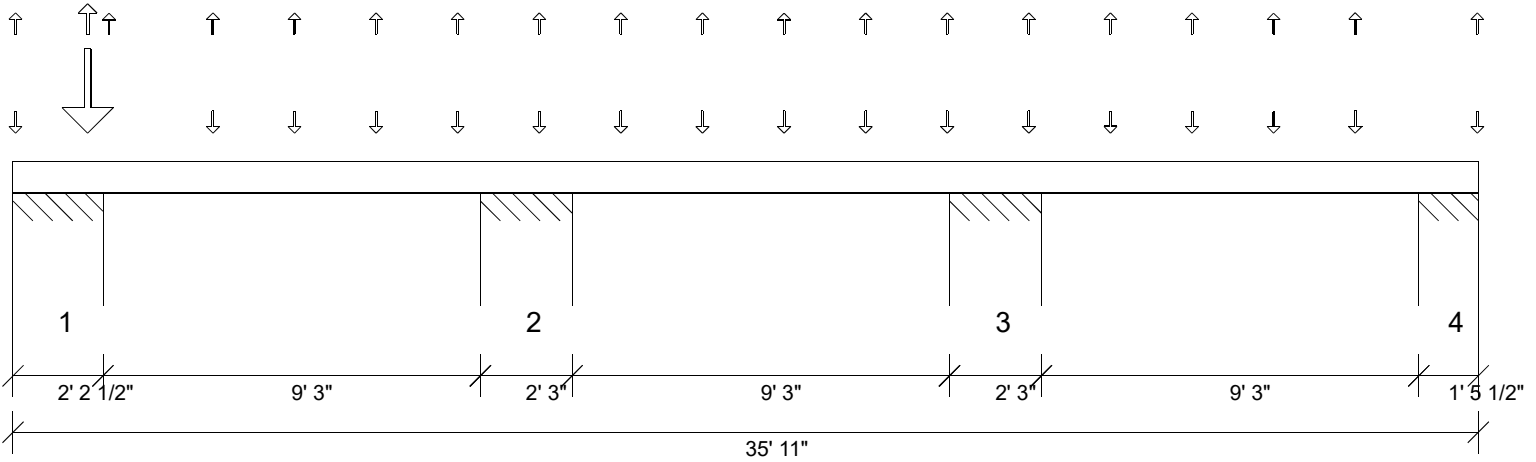
Support	Start	End	Source	Maximum Analysis Reactions			
				Dead	Floor Live	Roof Live	Snow
1	0'	0'- 3 1/2"	E21(i41)	345.00 lb	-	309.00 lb	185.00 lb
2	8'- 1/2"	8'- 4"	E17(i34)	443.00 lb	-	407.00 lb	243.00 lb

Errors, Warnings & Notes:

- * The dead loads used in the design of this member were applied to the structure as projected dead loads.
- * The member graphic, dimensions, and locations shown on this report are based on the centerline of the member.
- * Analysis and Design has been performed using precision loading from actual modeled conditions. Some loads may have been modified to simplify reporting.

- Transfer reactions may differ from design results as allowed per building codes and standard load distribution practices.

- This report is based on modeled conditions input by the user. Source information for the loads and supports are provided for reference only. Verify that all loads and support conditions are correct.



Graphical Illustration - Not To Scale
 Member Cut Length - 35'- 11"
 MemberPitch - 0/12

Design Information:

Building Code:	IRC2015	Floor Dead Load:	10.0 lb/ft ²	Roof Dead Load:	10.0 lb/ft ²	Ground Snow Load:	20.0 lb/ft ²
Design Methodology:	ASD	Floor Live Load:	40.0 lb/ft ²	Roof Live Load:	20.0 lb/ft ²		
		Unbraced Length	Top: 33'- 10"	Bottom:	35'- 11"		

Design Results:

	Location	Design	Control	Result	LDF	Load Combination
Critical Moment (Pos)	1'- 10"	2541.54 lb ft	15318.75 lb ft	Passed - 17%	1.15	D + 0.75(L + Lr)
Critical Moment (Neg)	2'- 1"	-1221.56 lb ft	15318.75 lb ft	Passed - 8%	1.15	D + 0.75(L + Lr)
Critical Shear	14'- 5 3/4"	572.03 lb	7198.04 lb	Passed - 8%	1.15	D + 0.75(L + Lr)
Live Load Deflection	18'- 3 7/16"	0'	0'- 3/4" (L/360)	Passed - L/999	-	0.75(L + Lr + 0.6W)
Total Load Deflection	18'- 3 7/8"	0'	0'- 1" (L/240)	Passed - L/999	-	D + 0.75(L + Lr + 0.6W)
Max. Reaction			Supported Mt Supporting Mt			
	0'- 1 1/2"	1672.06 lb	18375.00 lb 17762.50 lb	Passed - 9%	1.15	D + 0.75(L + Lr)
	2'- 1"	14746.11 lb	18375.00 lb 17762.50 lb	Passed - 83%	1.15	D + 0.75(L + Lr)
	11'- 7"	495.59 lb	18375.00 lb 17762.50 lb	Passed - 3%	1.60	D + 0.75(L + Lr + 0.6W)
	11'- 7"	-397.97 lb	18375.00 lb -	Passed - 2%	1.60	D + 0.75(L + Lr + 0.6W)
	13'- 7"	1192.65 lb	18375.00 lb 17762.50 lb	Passed - 7%	1.15	D + 0.75(L + Lr)
	23'- 1"	868.45 lb	18375.00 lb 17762.50 lb	Passed - 5%	1.15	D + 0.75(L + Lr)
	25'- 1"	771.95 lb	18375.00 lb 17762.50 lb	Passed - 4%	1.60	D + 0.75(L + Lr + 0.6W)
	25'- 1"	-141.43 lb	18375.00 lb -	Passed - 1%	1.60	0.6D + 0.6W
	34'- 7"	1152.45 lb	18375.00 lb 17762.50 lb	Passed - 6%	1.15	D + Lr
	34'- 7"	-141.44 lb	25565.22 lb -	Passed - 1%	1.60	0.6D + 0.6W
	35'- 9 1/2"	39.66 lb	25565.22 lb 17762.50 lb	Passed - 0%	1.60	0.6D + 0.6W
	35'- 9 1/2"	-556.70 lb	18375.00 lb -	Passed - 3%	1.15	D + Lr

Design Notes:

* Member design assumed proper ply to ply connection. Verify connection between plies according to code specification

Loading:

Type	Start	End	Source	Maximum Load Magnitudes			
				Dead	Floor Live	Roof Live	Snow
Self Weight	0'	35'- 11"	Self Weight	9 lb/ft	-	-	-
Point	0'- 3/4"	0'- 3/4"	D2(c01)	-	-	105.00 lb	40.00 lb
Point	1'- 10"	1'- 10"	D1(c01)	7716.00 lb	5644.00 lb	4899.00/-146.00 lb	1803.00 lb
Point	2'- 4 1/4"	2'- 4 1/4"	C4(c01)	-	-	-4.00 lb	-
Point	4'- 10 13/16"	4'- 10 13/16"	C4(c01)	110.00 lb	-	111.00 lb	41.00 lb
Point	6'- 10 13/16"	6'- 10 13/16"	C4(c01)	-	-	84.00 lb	29.00 lb
Point	8'- 10 13/16"	8'- 10 13/16"	C4(c01)	-	-2.00 lb	84.00 lb	32.00 lb
Point	10'- 10 13/16"	10'- 10 13/16"	C4(c01)	-	-5.00 lb	82.00 lb	32.00 lb
Point	12'- 10 13/16"	12'- 10 13/16"	C4(c01)	121.00 lb	-	83.00 lb	32.00 lb
Point	14'- 10 13/16"	14'- 10 13/16"	C4(c01)	128.00 lb	69.00 lb	87.00/-5.00 lb	31.00 lb
Point	16'- 10 13/16"	16'- 10 13/16"	C4(c01)	119.00 lb	70.00 lb	89.00/-15.00 lb	28.00 lb
Point	18'- 10 13/16"	18'- 10 13/16"	C4(c01)	120.00 lb	70.00 lb	78.00/-5.00 lb	27.00 lb
Point	20'- 10 13/16"	20'- 10 13/16"	C4(c01)	119.00 lb	70.00 lb	84.00/-10.00 lb	28.00 lb
Point	22'- 10 13/16"	22'- 10 13/16"	C4(c01)	123.00 lb	69.00 lb	90.00/-12.00 lb	30.00 lb
Point	24'- 10 13/16"	24'- 10 13/16"	C4(c01)	130.00 lb	69.00 lb	84.00 lb	32.00 lb
Point	26'- 10 13/16"	26'- 10 13/16"	C4(c01)	105.00 lb	-5.00 lb	82.00 lb	31.00 lb
Point	28'- 10 13/16"	28'- 10 13/16"	C4(c01)	-	-5.00 lb	86.00 lb	33.00 lb
Point	30'- 10 13/16"	30'- 10 13/16"	C4(c01)	-	-	84.00 lb	-
Point	32'- 10 13/16"	32'- 10 13/16"	C4(c01)	150.00 lb	-	149.00 lb	56.00 lb
Point	35'- 10 3/4"	35'- 10 3/4"	C4(c01)	-	-	89.00/-4.00 lb	32.00 lb

Support Information:

- Transfer reactions may differ from design results as allowed per building codes and standard load distribution practices.

- This report is based on modeled conditions input by the user. Source information for the loads and supports are provided for reference only. Verify that all loads and support conditions are correct.



Support	Start	End	Source	Maximum Analysis Reactions			
				Dead	Floor Live	Roof Live	Snow
1	0'	2'- 2 1/2"	E1(i50)	8125.00/-60.00 lb	5656.00/-8.00 lb	5348.00/-294.00 lb	1924.00/-9.00 lb
==>	0'- 1 1/2"	0'- 1 1/2"	E1(i50)	-60.00 lb	1.00/-6.00 lb	113.00/-143.00 lb	-9.00 lb
==>	2'- 1"	2'- 1"	E1(i50)	8125.00 lb	5655.00/-2.00 lb	5235.00/-151.00 lb	1924.00 lb
2	11'- 5 1/2"	13'- 8 1/2"	E3(i98)	693.00 lb	357.00/-129.00 lb	808.00/-236.00 lb	175.00 lb
==>	11'- 7"	11'- 7"	E3(i98)	211.00 lb	33.00/-129.00 lb	396.00/-139.00 lb	94.00 lb
==>	13'- 7"	13'- 7"	E3(i98)	482.00 lb	324.00 lb	412.00/-97.00 lb	81.00 lb
3	22'- 11 1/2"	25'- 2 1/2"	E5(i100)	735.00 lb	439.00/-108.00 lb	796.00/-221.00 lb	171.00 lb
==>	23'- 1"	23'- 1"	E5(i100)	447.00 lb	316.00/-22.00 lb	395.00/-150.00 lb	75.00 lb
==>	25'- 1"	25'- 1"	E5(i100)	288.00 lb	123.00/-86.00 lb	401.00/-71.00 lb	96.00 lb
4	34'- 5 1/2"	35'- 11"	E7(i102)	612.00/-253.00 lb	36.00/-30.00 lb	638.00/-313.00 lb	192.00/-76.00 lb
==>	34'- 7"	34'- 7"	E7(i102)	612.00 lb	30.00/-9.00 lb	549.00/-2.00 lb	192.00 lb
==>	35'- 9 1/2"	35'- 9 1/2"	E7(i102)	-253.00 lb	6.00/-21.00 lb	89.00/-311.00 lb	-76.00 lb

Errors, Warnings & Notes:

- * The dead loads used in the design of this member were applied to the structure as projected dead loads.
- * The member graphic, dimensions, and locations shown on this report are based on the centerline of the member.
- * Analysis and Design has been performed using precision loading from actual modeled conditions. Some loads may have been modified to simplify reporting.