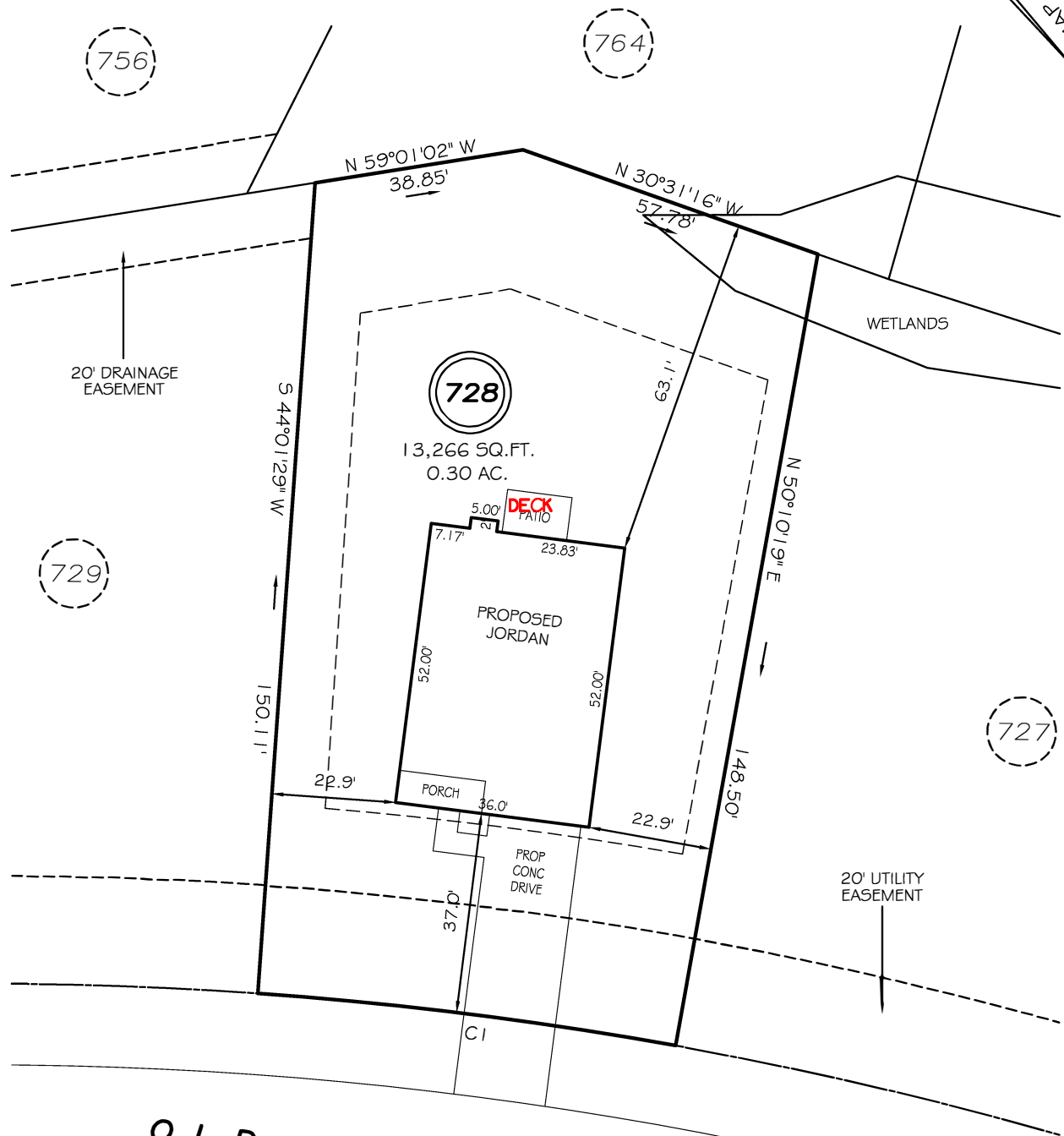


I, MICHAEL P. GRIFFIN, certify that under my direction and supervision this map was drawn from an actual field survey; that the error of closure of the survey as calculated by coordinates is 1: 10,000+; that the area shown hereon was calculated by coordinates.

Witness my hand and seal this day of MONTH 2008.

MAP 2019 PGS 44-45  
HARNETT CO. REGISTRY



**OLD MONTAGUE WAY**  
50' PUBLIC/UTILITY RW

**SETBACKS**

FRONT	35'
REAR	25'
SIDE (ONE SIDE)	5'
SIDE (ONE SIDE)	10'
CORNER SIDE	20'

CI R=725.00' L=77.78' S42°54'06"E 77.75'

**LEGEND**

EIP	EXISTING IRON PIPE	FES	FLARED END SECTION
IPS	IRON PIPE SET	WM	WATER METER
R/W	RIGHT OF WAY	CO	CLEAN OUT
N/F	NOW OR FORMERLY	FH	FIRE HYDRANT
EIS	EXISTING IRON STAKE	CB	CATCH BASIN

**PRELIMINARY**  
NOT FOR RECORDATION,  
SALES OR CONVEYANCE



**GRIFFIN LAND SURVEYING, INC.**  
P. O. BOX 148  
FUQUAY-VARINA, NC 27526  
(919) - 567 - 1963

**PLOT PLAN**  
FOR  
**H & H HOMES**  
**LEXINGTON PLANTATION**  
**LOT 728**  
OLD MONTAGUE WAY  
NORTH CAROLINA  
HARNETT COUNTY ANDERSON CREEK TOWNSHIP

DRAWN BY NMF

DATE 11/7/19

CHECKED BY MPG

SCALE 1" = 30'