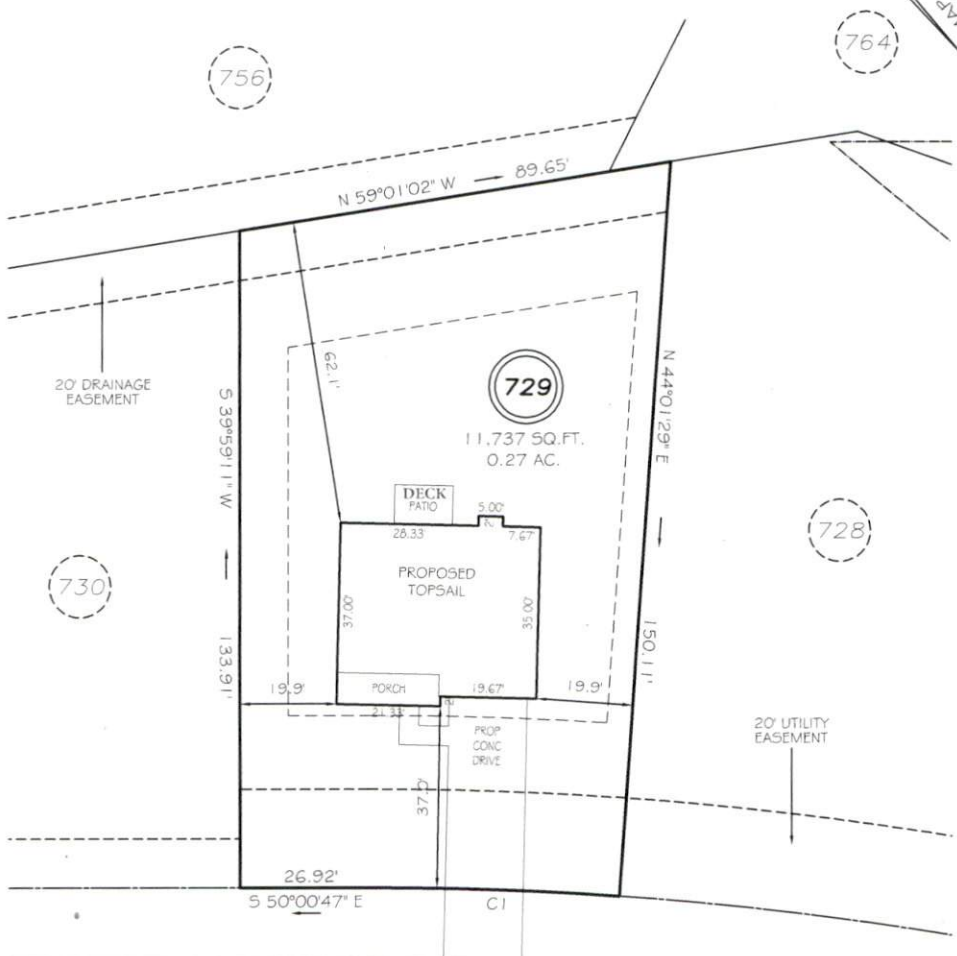


I, MICHAEL P. GRIFFIN, certify that under my direction and supervision this map was drawn from an actual field survey; that the error of closure of the survey as calculated by coordinates is 1: 10,000+; that the area shown hereon was calculated by coordinates.
 Witness my hand and seal this day of MONTH 2019.

MAP 2019 PGS 44-45
 HARNETT CO. REGISTRY



SITE PLAN APPROVAL
 DISTRICT RA-202 USE OSFD
4
 #BEDROOMS
 1/14/2020
 Zoning Administrator

OLD MONTAGUE WAY
 50' PUBLIC/UTILITY RW

SETBACKS
 FRONT 35'
 REAR 25'
 SIDE (ONE SIDE) 5'
 SIDE (ONE SIDE) 10'
 CORNER SIDE 20'

CI R=725.00° L=51.10° S47°59'41\"/>

PRELIMINARY
 NOT FOR RECORDATION,
 SALES OR CONVEYANCE

LEGEND

EIP	EXISTING IRON PIPE	FES	FLARED END SECTION
IPS	IRON PIPE SET	WM	WATER METER
RW	RIGHT OF WAY	CO	CLEAN OUT
N/F	NOW OR FORMERLY	FH	FIRE HYDRANT
EIS	EXISTING IRON STAKE	CB	CATCH BASIN



GRIFFIN LAND SURVEYING, INC.
 P.O. BOX 148
 FUQUAY-VARINA, NC 27526
 (919) - 567 - 1963

PLOT PLAN
 FOR
H & H HOMES
 LEXINGTON PLANTATION
 LOT 729
 OLD MONTAGUE WAY
 NORTH CAROLINA
 HARNETT COUNTY ANDERSON CREEK TOWNSHIP

DRAWN BY NMF DATE 11/7/19
 CHECKED BY MPG SCALE 1" = 30'