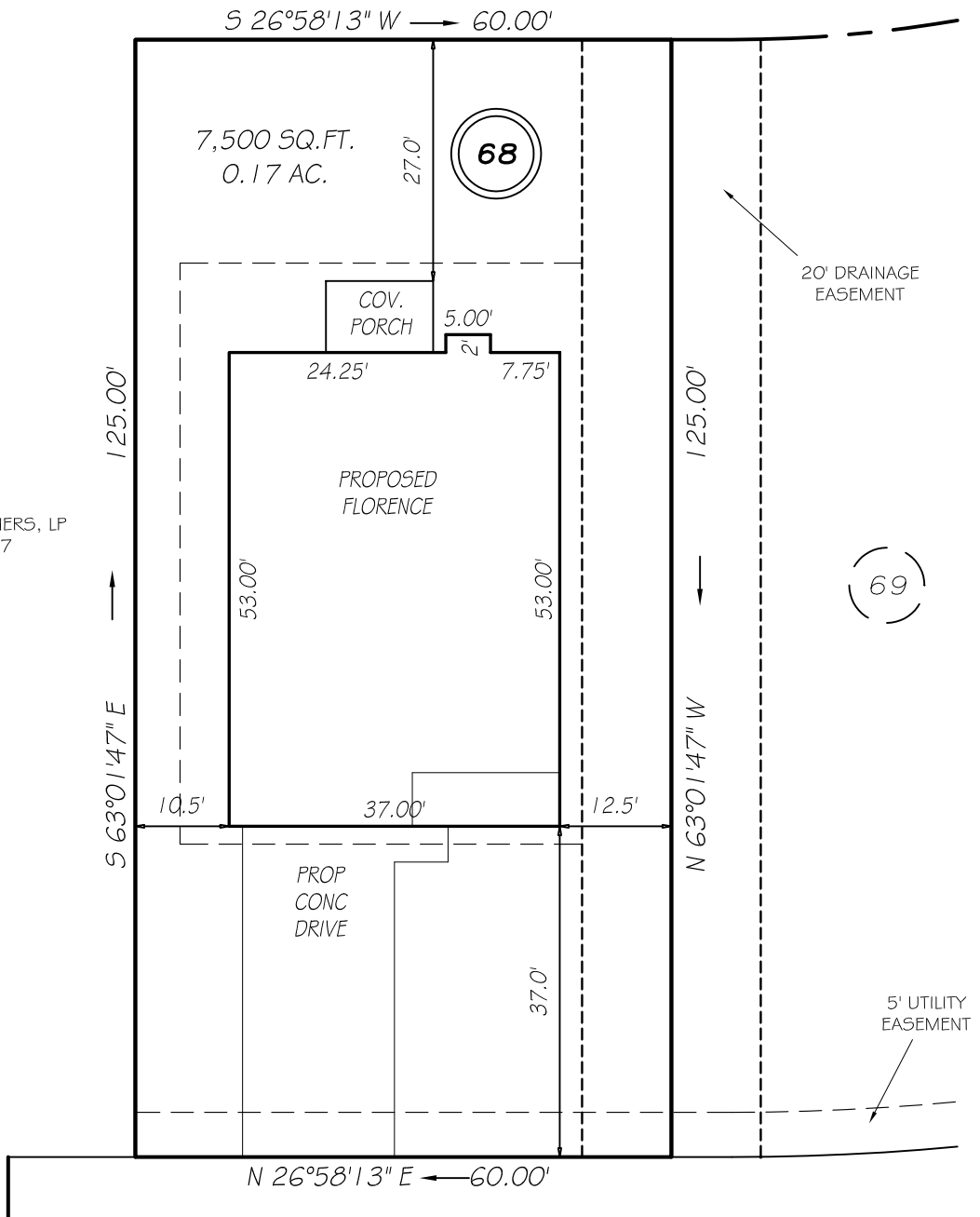


I, MICHAEL P. GRIFFIN, certify that under my direction and supervision this map was drawn from an actual field survey; that the error of closure of the survey as calculated by coordinates is 1: 10,000+; that the area shown hereon was calculated by coordinates.

Witness my hand and seal this day of MONTH 2019.

MAP 2015 PGS 238-239, 258-259  
HARNETT CO. REGISTRY

ANDERSON CREEK PARTNERS, LP  
PIN 0505-86-8897  
DB 1346 PG 98



**TIMBER SKIP DRIVE**

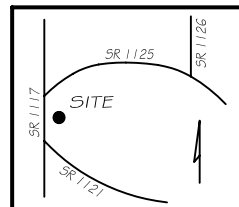
50' PRIVATE RW

**SETBACKS**

FRONT	35'
REAR	25'
SIDE	10'
CORNER SIDE	20'

**LEGEND**

EIP	EXISTING IRON PIPE	FES	FLARED END SECTION
IPS	IRON PIPE SET	WM	WATER METER
R/W	RIGHT OF WAY	CO	CLEAN OUT
N/F	NOW OR FORMERLY	FH	FIRE HYDRANT
EIS	EXISTING IRON STAKE	CB	CATCH BASIN



**PRELIMINARY**  
NOT FOR RECORDATION,  
SALES OR CONVEYANCE



**GRIFFIN LAND SURVEYING, INC.**

P. O. BOX 148  
FUQUAY-VARINA, NC 27526  
(919) - 567 - 1963

**PLOT PLAN**

FOR

**H & H HOMES**

**ANDERSON CREEK CLUB**

**LOT 68**

TIMBER SKIP DRIVE

NORTH CAROLINA

HARNETT COUNTY ANDERSON CREEK TOWNSHIP

DRAWN BY **NMF**

DATE **5/28/19**

CHECKED BY **MPG**

SCALE **1" = 20'**