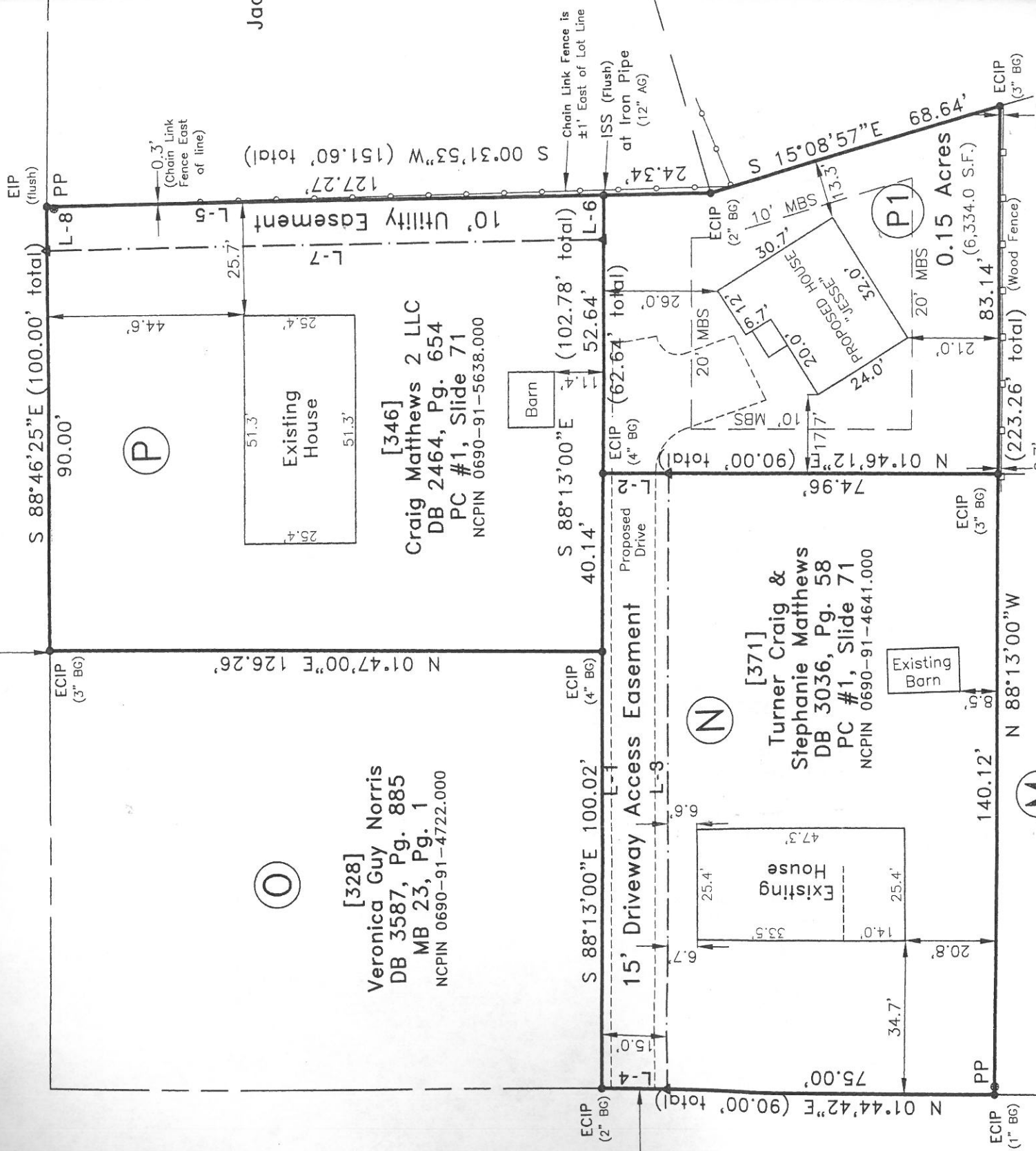


E South Street ~ 50' Public R/W



[328]
Veronica Guy Norris
DB 3587, Pg. 885
MB 23, Pg. 1
NCPIN 0690-91-4722.000

[346]
Craig Matthews 2 LLC
DB 2464, Pg. 654
PC #1, Slide 71
NCPIN 0690-91-5638.000

[371]
Turner Craig &
Stephanie Matthews
DB 3036, Pg. 58
PC #1, Slide 71
NCPIN 0690-91-4641.000

[387]
Charles J. Borg
DB 3347, Pg. 713
PC #1, Slide 71
NCPIN 0690-91-4542.000

[41]
David B. & S. B. Maynor
DB 706, Pg. 588
MB 23, Pg. 1
NCPIN 0690-91-5468.000

S Mason Street ~ 50' Public R/W

15' Wide Driveway Access Easement

Course	Bearing	Distance
L-1	S 88°13'00" E	140.16'
L-2	S 01°46'12" W	15.00'
L-3	N 88°13'00" W	140.15'