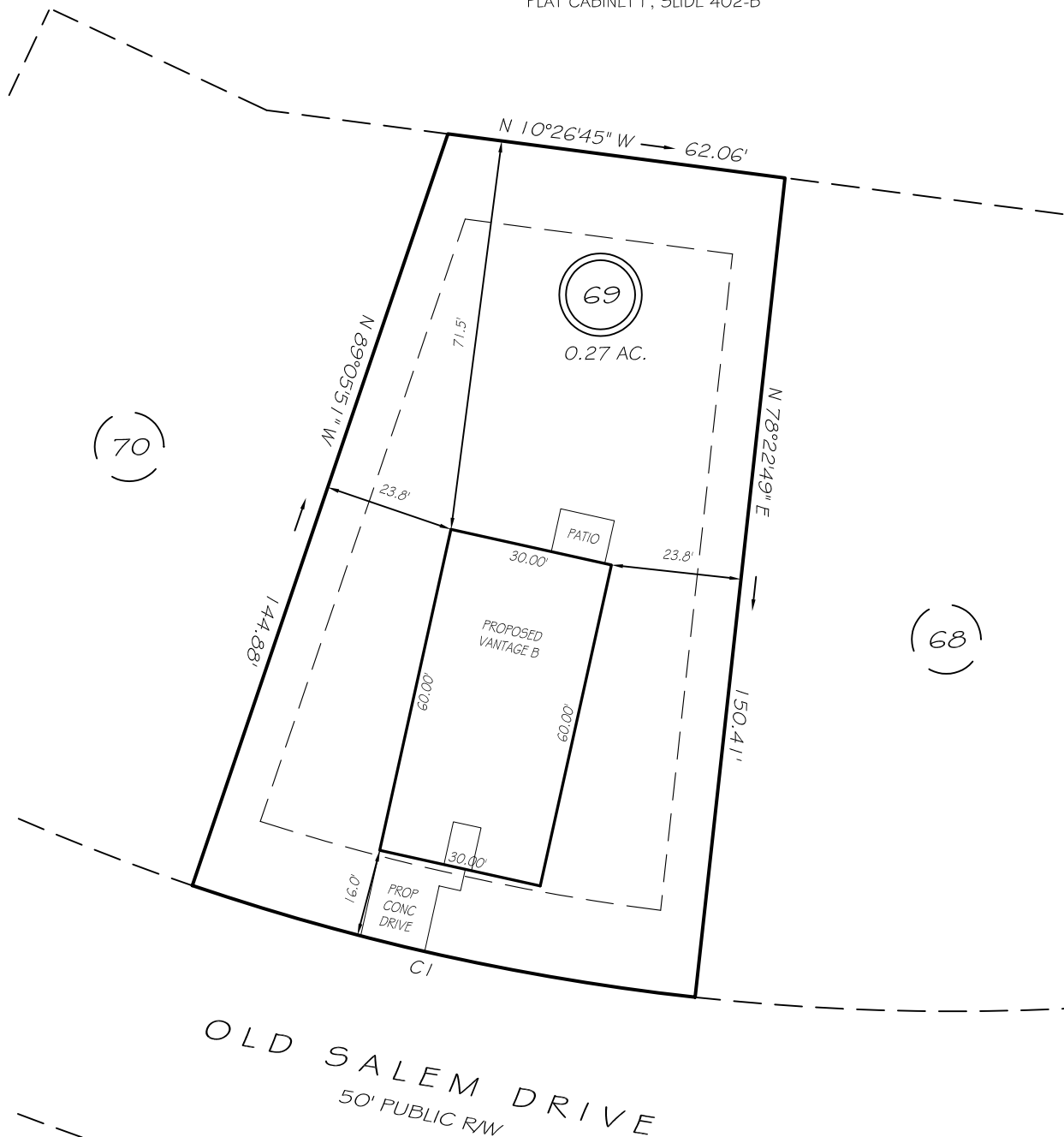


I, MICHAEL P. GRIFFIN, certify that under my direction and supervision this map was drawn from an actual field survey; that the error of closure of the survey as calculated by coordinates is 1: 10,000+; that the area shown hereon as calculated by coordinates.

Witness my hand and seal this day of MONTH 2019.

PC F SLIDE 548C
HARNETT CO. REGISTRY

COUNTRY SQUIRE ESTATES
SECTION THREE PART ONE
PLAT CABINET F, SLIDE 402-B



OLD SALEM DRIVE
50' PUBLIC RW

REVISION: FORWARD TO 16' 9/26/19

EASEMENTS ARE HEREBY RESERVED BY THE DEVELOPER ON, OVER, UNDER, ABOVE AND THROUGH A STRIP OF LAND TEN FEET IN WIDTH ALONG EACH SIDE LOT LINE AND FIFTEEN FEET IN WIDTH ALONG EACH REAR LOT LINE AND FRONT LOT LINE FOR DRAINAGE, WATER AND SEWAGE INSTALLATION AND MAINTENANCE AND FOR OTHER UTILITY PURPOSES.

PER COVENANTS
SETBACKS

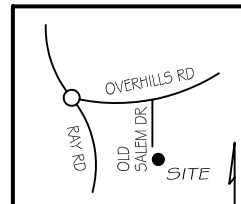
FRONT	15'
REAR	15'
SIDE	8'

CI R=430.98' L=94.21' N05°21'35"W 94.02'

PRELIMINARY
NOT FOR RECORDATION,
SALES OR CONVEYANCE

LEGEND

EIP	EXISTING IRON PIPE	FES	FLARED END SECTION
IPS	IRON PIPE SET	WM	WATER METER
R/W	RIGHT OF WAY	CO	CLEAN OUT
N/F	NOW OR FORMERLY	FH	FIRE HYDRANT
EIS	EXISTING IRON STAKE	CB	CATCH BASIN



GRiffin LAND SURVEYING, INC.
P. O. BOX 148
FUQUAY-VARINA, NC 27526
(919) - 567-1963

PLOT PLAN
FOR
H & H HOMES
COUNTRY SQUIRE ESTATES
LOT 69
OLD SALEM DRIVE
NORTH CAROLINA
HARNETT CO. ANDERSON CREEK TWSP

DRAWN BY NMF

DATE 9/25/19

CHECKED BY MPG

SCALE 1" = 30'