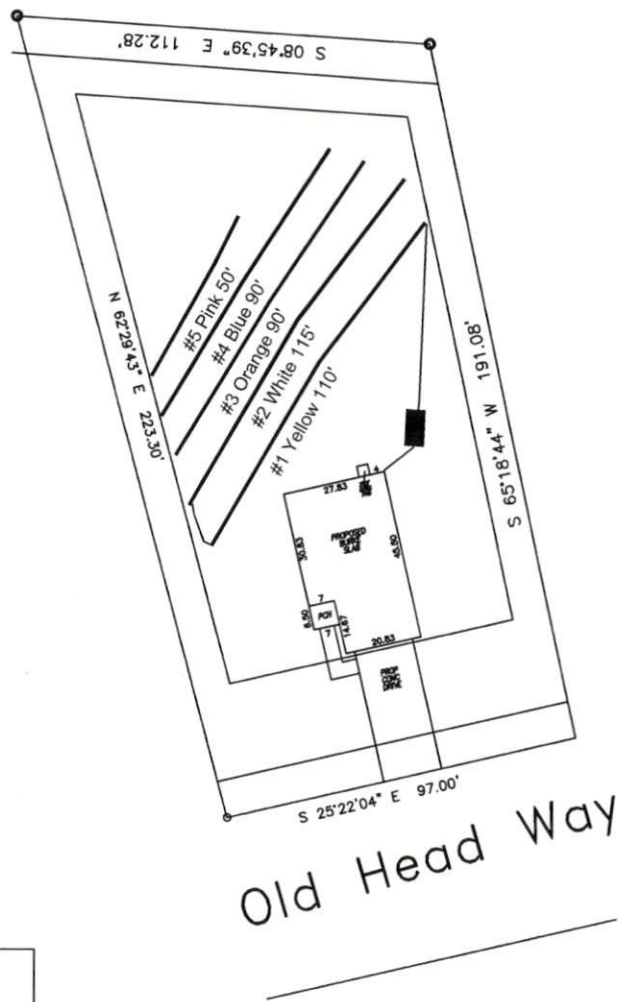


Avery Pond 3-Bedroom Septic Proposal Lot #97



System: serial distribution
 Lines: 1-2 (225')
 0.4 LTAR
 24" Trench Bottom
 Accepted Status System
 Repair: serial distribution
 Lines: 3-5 (225')
 0.4 LTAR
 18" Trench Bottom
 Accepted Status System

GRAPHIC SCALE
 1" = 50'



Adams
 Soil Consulting
 919-414-6761
 Job #708

Avery Pond

Lot #97

3-Bedroom Home (360 gal./day)

<u>LINE #</u>	<u>COLOR</u>	<u>BS</u>	<u>HI</u>	<u>FS</u>	<u>ELEVATION</u>	<u>LINE LENGTH</u>	<u>Design Length</u>
TBM		2.0		100.0		<u>in field</u>	<u>installation</u>
INST. 1			102.0				
1	Yellow			3.6	102	110	110
2	White			4.4	98.4	115	115
3	Orange			5	97.6	105	90
4	Blue			5.5	97	90	90
5	Pink			6.1	96.5	50	50
					Total	470	455

	<u>System</u>	<u>Repair</u>
	Lines 1-2	Lines 3-5
System Type	Accepted Status System EZ-FLOW	Accepted Status System EZ-FLOW
Suggested Soil LTAR	0.40	0.40
Total Line Length	225	225
Square Footage	675	675
Proposed Trench Bottom	18"	18"
Distribution Method	serial distribution	Serial Distribution