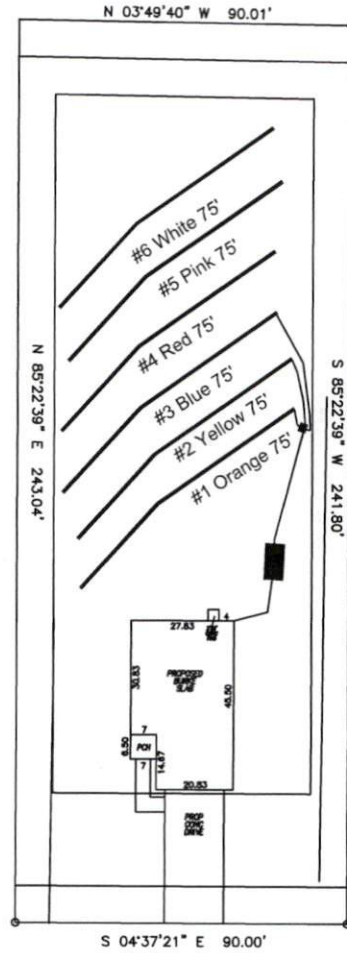


# Avery Pond 3-Bedroom Septic Proposal Lot #94



94

Old Head Way

---

System: Gravity D-Box  
 Lines: 1-3 (225')  
 0.4 LTAR  
 18" Trench Bottom  
 Accepted Status System  
 Repair: Pressure Manifold  
 Lines: 3-4 (225')  
 0.4 LTAR  
 18" Trench Bottom  
 Accepted Status System

GRAPHIC SCALE  
 1" = 50'



Adams  
 Soil Consulting  
 919-414-6761  
 Job #708

**Avery Pond**

**Lot #94**

3-Bedroom Home (360 gal./day)

| <u>LINE #</u> | <u>COLOR</u> | <u>BS</u> | <u>HI</u> | <u>FS</u> | <u>ELEVATION</u> | <u>LINE LENGTH</u> | <u>Design Length</u> |
|---------------|--------------|-----------|-----------|-----------|------------------|--------------------|----------------------|
| TBM           |              | 2.0       |           | 100.0     |                  | <u>in field</u>    | <u>installation</u>  |
| INST. 1       |              |           | 102.0     |           |                  |                    |                      |
| 1             | Orange       |           |           | 3.6       | 102              | 85                 | 75                   |
| 2             | Yellow       |           |           | 4.1       | 98.4             | 85                 | 75                   |
| 3             | Blue         |           |           | 4.5       | 97.9             | 85                 | 75                   |
| 4             | Red          |           |           | 5         | 97.5             | 85                 | 75                   |
| 5             | Pink         |           |           | 5.5       | 97               | 85                 | 75                   |
| 6             | White        |           |           | 5.9       | 96.5             | 85                 | 75                   |
|               |              |           |           |           | <b>Total</b>     | <b>510</b>         | <b>450</b>           |

|                               | <u>System</u>                     | <u>Repair</u>                     |
|-------------------------------|-----------------------------------|-----------------------------------|
|                               | Lines 1-3                         | Lines 4-6                         |
| <b>System Type</b>            | Accepted Status System<br>EZ-FLOW | Accepted Status System<br>EZ-FLOW |
| Suggested Soil LTAR           | 0.40                              | 0.40                              |
| <b>Total Line Length</b>      | 225                               | 225                               |
| <b>Square Footage</b>         | 675                               | 675                               |
| <b>Proposed Trench Bottom</b> | 18"                               | 18"                               |
| <b>Distribution Method</b>    | Gravity to D-Box                  | Gravity to D-Box                  |