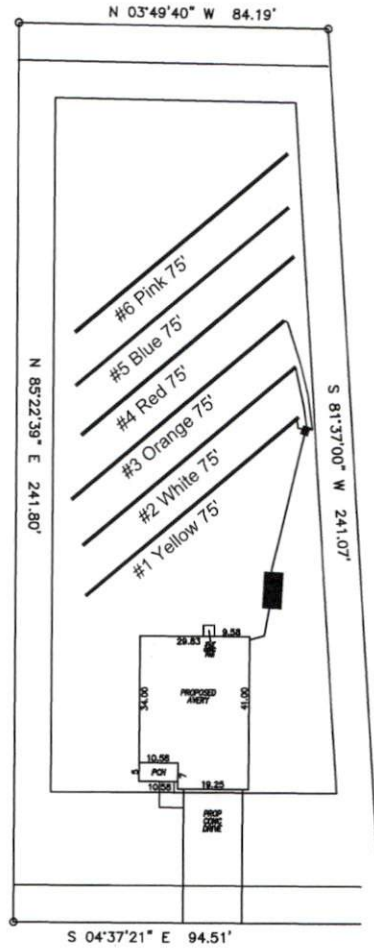


# Avery Pond 3-Bedroom Septic Proposal Lot #95



95

Old Head Way

---

System: Gravity D-Box  
 Lines: 1-3 (225')  
 0.4 LTAR  
 18" Trench Bottom  
 Accepted Status System  
 Repair: Gravity to D-Box  
 Lines: 3-4 (225')  
 0.4 LTAR  
 18" Trench Bottom  
 Accepted Status System

GRAPHIC SCALE  
 1" = 50'



Adams  
 Soil Consulting  
 919-414-6761  
 Job #708

**Avery Pond**

**Lot #95**

3-Bedroom Home (360 gal./day)

<u>LINE #</u>	<u>COLOR</u>	<u>BS</u>	<u>HI</u>	<u>FS</u>	<u>ELEVATION</u>	<u>LINE LENGTH</u>	<u>Design Length</u>
TBM		2.0		100.0		<u>in field</u>	<u>installation</u>
INST. 1			102.0				
1	Yellow			5.6	102	90	75
2	White			6	96.4	90	75
3	Orange			6.4	96	90	75
4	Red			6.8	95.6	90	75
5	Blue			7.2	95.2	80	75
6	Pink			7.6	94.8	75	75
					<b>Total</b>	<b>515</b>	<b>450</b>

	<u>System</u>	<u>Repair</u>
	Lines 1-3	Lines 4-6
<b>System Type</b>	Accepted Status System EZ-FLOW	Accepted Status System EZ-FLOW
Suggested Soil LTAR	0.40	0.40
<b>Total Line Length</b>	225	225
<b>Square Footage</b>	675	675
<b>Proposed Trench Bottom</b>	18"	18"
<b>Distribution Method</b>	Gravity to D-Box	Gravity to D-Box