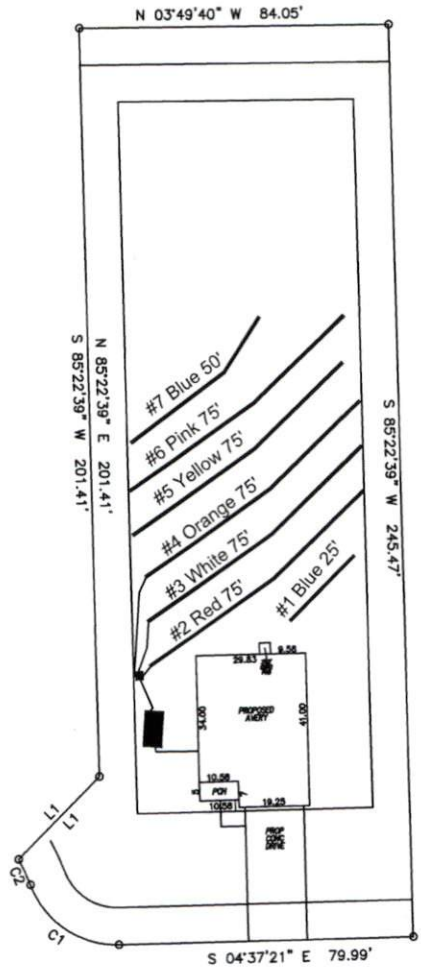


Avery Pond 3-Bedroom Septic Proposal Lot #91

91



Old Head Way

System: Gravity D-Box
 Lines: 2-4 (225')
 0.4 LTAR
 24" Trench Bottom
 Accepted Status System
 Repair: Serial Distribution
 Lines: 1, 5-7 (225')
 0.4 LTAR
 18" Trench Bottom
 Accepted Status System

GRAPHIC SCALE
 1" = 50'



Adams
 Soil Consulting
 919-414-6761
 Job #708

Avery Pond
Lot #91

3-Bedroom Home (360 gal./day)

<u>LINE #</u>	<u>COLOR</u>	<u>BS</u>	<u>HI</u>	<u>FS</u>	<u>ELEVATION</u>	<u>LINE LENGTH</u>	<u>Design Length</u>
TBM		2.0		100.0		<u>in field</u>	<u>installation</u>
INST. 1			102.0				
1	Blue			0.7	102	35	25
2	Red			1.4	101.3	87	75
3	White			1.9	100.6	88	75
4	Orange			2.4	100.1	88	75
5	Yellow			3	99.6	88	75
6	Pink			3.4	99	75	75
7	Blue			3.8	98.6	50	50
Total						511	450

	<u>System</u>	<u>Repair</u>
	Lines 3-5	Lines 1, 5-7
System Type	Accepted Status System EZ-FLOW	Accepted Status System EZ-FLOW
Suggested Soil LTAR	0.40	0.40
Total Line Length	225	225
Square Footage	675	675
Proposed Trench Bottom	18"	18"
Distribution Method	Gravity to D-Box	Serial Distribution